

141 East 56th Street

BETWEEN LEXINGTON & 3RD AVENUE
MIDTOWN EAST



141 East 56th Street

BETWEEN LEXINGTON & 3RD AVENUE
MIDTOWN EAST

Size: 2,270 SF Ground Floor
1,126 SF Basement

Frontage: 59'

Possession: Immediate

Transportation: 4 5 6 N R W E M

Property Highlights:

- Expansive frontage along busy side street
- Former bathroom supply store
- Desirable co-tenancy

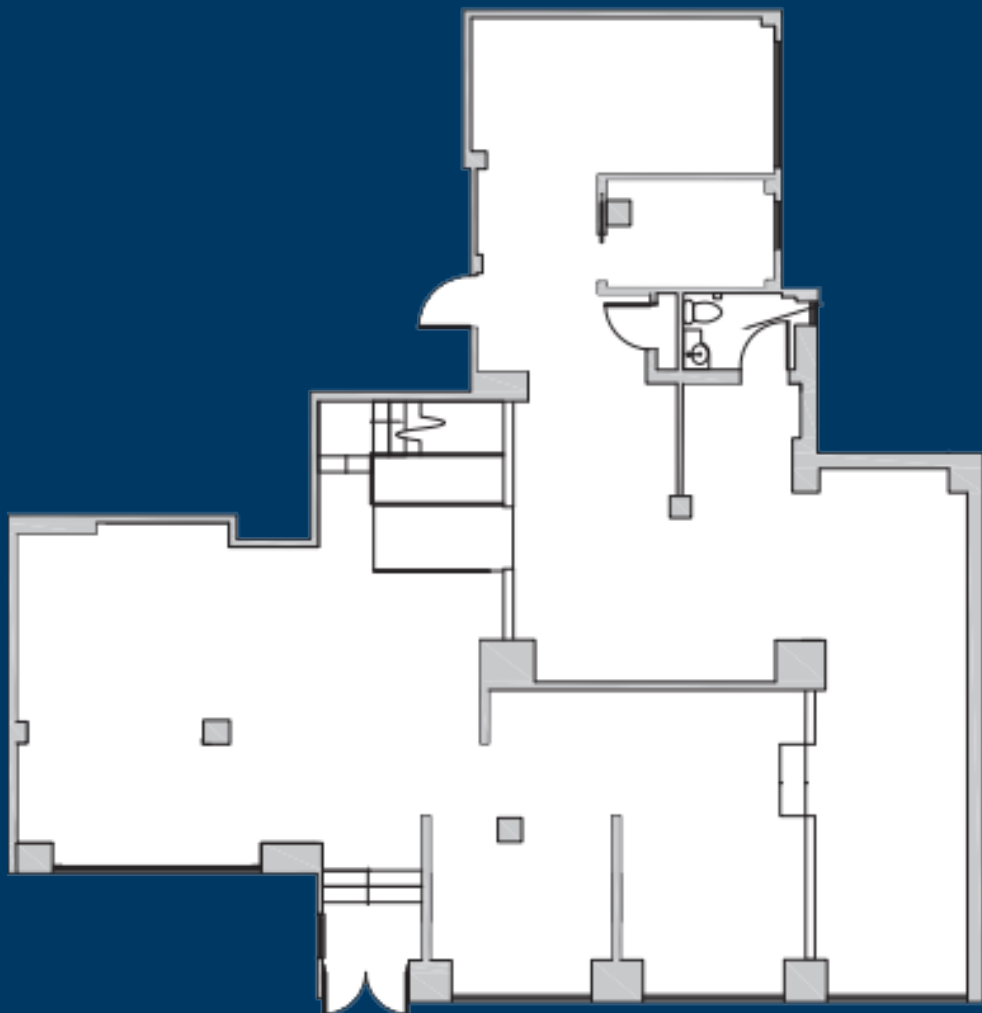
Neighboring Tenants:

GIVENCHY ALEXANDER MOQUEEN CHANEL KWIAT LONGCHAMP roberto cavalli Chopard JIMMY CHOO HERMÈS BRUNELLO CUCINELLI Berluti AARON BASHA MICHAEL KORS L.K.Bennett LOUIS VUITTON	DANIEL PARK AVE	E 65th ST	William-Wayne & Co. A&A DISCOUNT ANNA BELEN J POCKER	Kiehl's Loco Coco LEZARDRO EQUIPO Famous Original RAY'S PIZZA	at&t cftibank Starbucks
		E 64th ST	STARBUCKS Apple Bank	BIRCH AUGUST LUSH Juice press MEPHISTO WORLD'S FINEST FOOTWEAR	arche SUBWAY
		E 63rd ST	BURGER HEAVEN	pookies&sebastian sweetgreen SABON ORVA Sprinkles	at&t DR CHIPOTLE ETHAN ALLEN sunglass hut DYLAN'S CANDY BAR
		E 62nd ST	SEPHORA ZARA	bloomingdale's Clarks Capital One	4 5 6 MAKE UP FOR EVER The Container Store THE HOME DEPOT DDB FITNESS
		E 61st ST	Baccarat CHASE SUITSSUPPLY Capital One	DIESEL CANALI BVLGARI Wolford LAVO fugal TAO COACH FOUR SEASONS BREITLING VICTORIA'S SECRET PHILIPS LACOSTE First Republic Bank	AMERICAN EAGLE OUTFITTERS STARBUCKS DUNKIN' GNC The Lombardy NATIONAL BANK CONCORDE HOTEL
E 60th ST	Baccarat CHASE SUITSSUPPLY Capital One	DIESEL CANALI BVLGARI Wolford LAVO fugal TAO COACH FOUR SEASONS BREITLING VICTORIA'S SECRET PHILIPS LACOSTE First Republic Bank	AMERICAN EAGLE OUTFITTERS STARBUCKS DUNKIN' GNC The Lombardy NATIONAL BANK CONCORDE HOTEL	orangetheory DIG Chick-fil-A BankUnited ETHAN ALLEN flagstar W WHOLE FOODS MARKET	
E 59th ST	Baccarat CHASE SUITSSUPPLY Capital One	DIESEL CANALI BVLGARI Wolford LAVO fugal TAO COACH FOUR SEASONS BREITLING VICTORIA'S SECRET PHILIPS LACOSTE First Republic Bank	AMERICAN EAGLE OUTFITTERS STARBUCKS DUNKIN' GNC The Lombardy NATIONAL BANK CONCORDE HOTEL	orangetheory DIG Chick-fil-A BankUnited ETHAN ALLEN flagstar W WHOLE FOODS MARKET	
E 58th ST	Baccarat CHASE SUITSSUPPLY Capital One	DIESEL CANALI BVLGARI Wolford LAVO fugal TAO COACH FOUR SEASONS BREITLING VICTORIA'S SECRET PHILIPS LACOSTE First Republic Bank	AMERICAN EAGLE OUTFITTERS STARBUCKS DUNKIN' GNC The Lombardy NATIONAL BANK CONCORDE HOTEL	orangetheory DIG Chick-fil-A BankUnited ETHAN ALLEN flagstar W WHOLE FOODS MARKET	
E 57th ST	Baccarat CHASE SUITSSUPPLY Capital One	DIESEL CANALI BVLGARI Wolford LAVO fugal TAO COACH FOUR SEASONS BREITLING VICTORIA'S SECRET PHILIPS LACOSTE First Republic Bank	AMERICAN EAGLE OUTFITTERS STARBUCKS DUNKIN' GNC The Lombardy NATIONAL BANK CONCORDE HOTEL	orangetheory DIG Chick-fil-A BankUnited ETHAN ALLEN flagstar W WHOLE FOODS MARKET	
E 56th ST	Baccarat CHASE SUITSSUPPLY Capital One	DIESEL CANALI BVLGARI Wolford LAVO fugal TAO COACH FOUR SEASONS BREITLING VICTORIA'S SECRET PHILIPS LACOSTE First Republic Bank	AMERICAN EAGLE OUTFITTERS STARBUCKS DUNKIN' GNC The Lombardy NATIONAL BANK CONCORDE HOTEL	orangetheory DIG Chick-fil-A BankUnited ETHAN ALLEN flagstar W WHOLE FOODS MARKET	
E 55th ST	Baccarat CHASE SUITSSUPPLY Capital One	DIESEL CANALI BVLGARI Wolford LAVO fugal TAO COACH FOUR SEASONS BREITLING VICTORIA'S SECRET PHILIPS LACOSTE First Republic Bank	AMERICAN EAGLE OUTFITTERS STARBUCKS DUNKIN' GNC The Lombardy NATIONAL BANK CONCORDE HOTEL	orangetheory DIG Chick-fil-A BankUnited ETHAN ALLEN flagstar W WHOLE FOODS MARKET	
E 54th ST	Baccarat CHASE SUITSSUPPLY Capital One	DIESEL CANALI BVLGARI Wolford LAVO fugal TAO COACH FOUR SEASONS BREITLING VICTORIA'S SECRET PHILIPS LACOSTE First Republic Bank	AMERICAN EAGLE OUTFITTERS STARBUCKS DUNKIN' GNC The Lombardy NATIONAL BANK CONCORDE HOTEL	orangetheory DIG Chick-fil-A BankUnited ETHAN ALLEN flagstar W WHOLE FOODS MARKET	

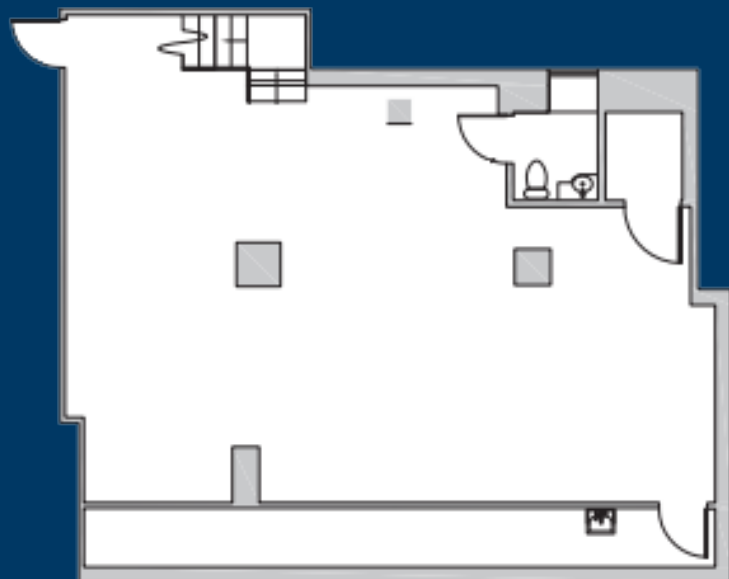
141 East 56th Street

BETWEEN LEXINGTON & 3RD AVENUE
MIDTOWN EAST

FLOOR PLANS:



GROUND FLOOR - 2,270 SF



BASEMENT - 1,126 SF

CONTACT OUR BROKERS
FOR MORE INFORMATION:

Marc Sitt
MSitt@ksrny.com
917.757.8863

Albert Manopla
AManopla@ksrny.com
212.380.8369



1385 Broadway - 22nd Floor
New York, NY 10018
212.417.9217
www.ksrny.com