



FOR LEASE


540 Lake Center Pky, Cumming, GA. 30040


- **Suite 206**
- **Rental Rate:** \$3,542.00 base monthly + CAM
- **CAM:** \$3.00 SF/YR (\$625.00/monthly)
- **Size:** 2,500 +- Square Feet of office space
 - large open room
 - 1 bathroom (an additional bathroom can be added)
 - 1 storage closet
 - additional 2500 +- SF available adjacent (Suite 206)
- **2nd Floor w/ Stairs to suites - No Elevator**
- Convenient location - City of Cumming
- Minutes to GA 400 via exit 15 or 14
- Abundant parking for staff and clients.
- Do not disturb the tenant in place
- **Available: 7/17/2026**
- Showings by appointment only w/ listing agent



Presented by: Doug Sills, Associate Broker

 Doug@BagleyCommercial.com

 678-923-5538 (Cell)

 770-781-5935 (Office)

 BagleyCommercial.com

**All information believed accurate but not warranted. Buyer responsible for verification.*

www.BagleyCommercial.com



FLOOR PLAN - SUITE 206

540 Lake Center Pky, Cumming, 30040

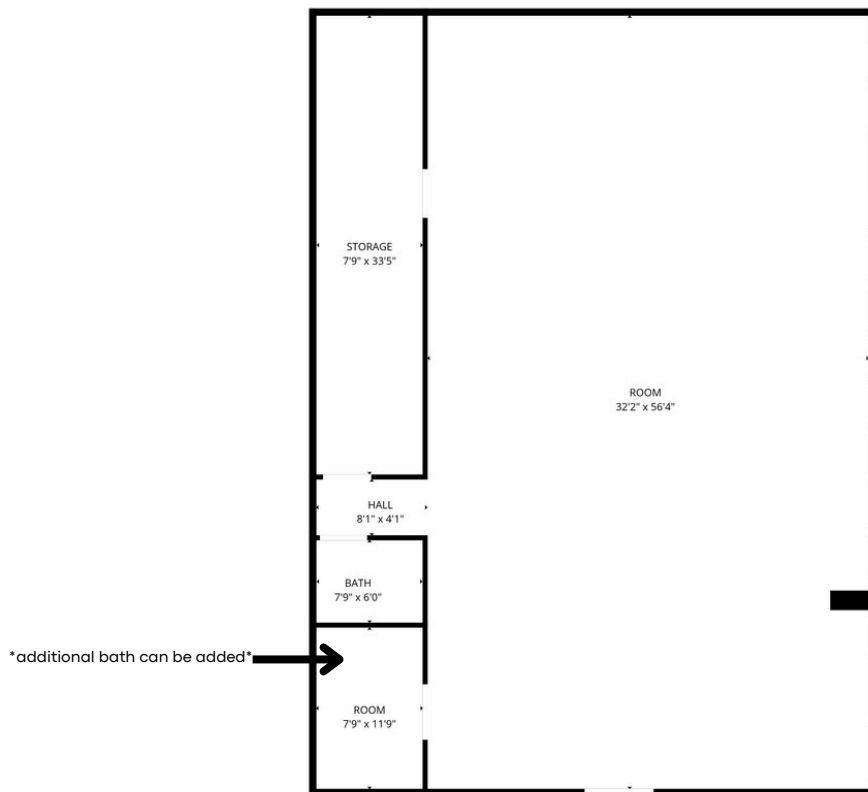
Presented by: Doug Sills
Associate Broker

770-781-5935 (Office) 678-923-5538 (cell)

Doug@BagleyCommercial.com

All information deemed accurate but not warrentied

SF is approximate



FLOOR PLAN CREATED BY CUBICASA APP. MEASUREMENTS DEEMED HIGHLY RELIABLE BUT NOT GUARANTEED.



Disclaimer: The information included in this packet has been obtained from sources believed to be reliable. While Bagley Commercial Properties does not doubt its accuracy, we do not make any guarantee's, warranties, with regards to the included information. It is your responsibility to independently confirm its accuracy and completeness. References to square footage or age are approximate. You and your advisors should conduct a careful, independent investigation of the property to determine to your satisfaction the suitability of the property for your needs. The information contained in this packet is proprietary and confidential, and should not be distributed to any other potential Tenant without the consent of Bagley Commercial Properties.



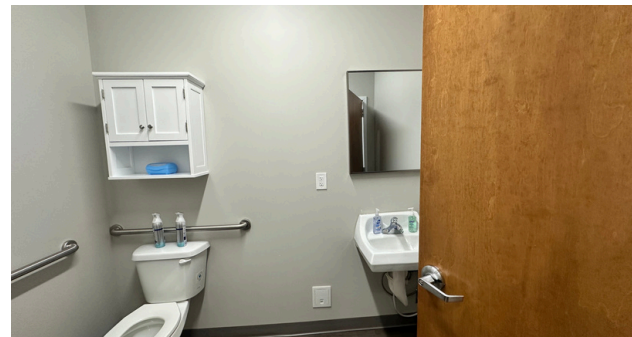
Interior Photos - SUITE 206

540 Lake Center Pky, Cumming, 30040

Presented by: Doug Sills
Associate Broker

 770-781-5935 (Office)  678-923-5538 (cell)

 Doug@BagleyCommercial.com



Disclaimer: The information included in this packet has been obtained from sources believed to be reliable. While Bagley Commercial Properties does not doubt its accuracy, we do not make any guarantee's, warranties, with regards to the included information. It is your responsibility to independently confirm its accuracy and completeness. References to square footage or age are approximate. You and your advisors should conduct a careful, independent investigation of the property to determine to your satisfaction the suitability of the property for your needs. The information contained in this packet is proprietary and confidential, and should not be distributed to any other potential Tenant without the consent of Bagley Commercial Properties.

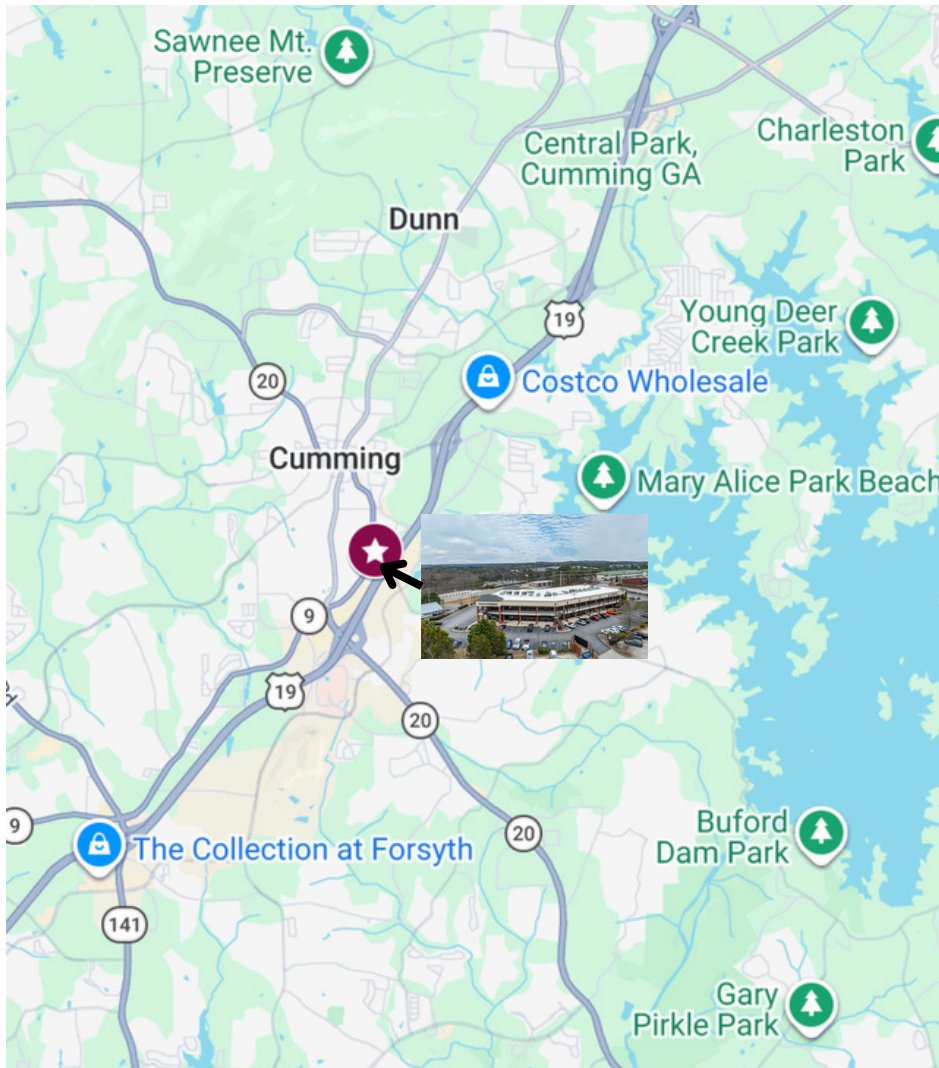


LOCATION MAP

540 Lake Center Pky, Cumming 30040

Presented by: Doug Sills
Associate Broker

📞 770-781-5935 (Office) 📞 678-923-5538 (cell)
✉️ Doug@BagleyCommercial.com



Disclaimer: The information included in this packet has been obtained from sources believed to be reliable. While Bagley Commercial Properties does not doubt its accuracy, we do not make any guarantee's, warranties, with regards to the included information. It is your responsibility to independently confirm its accuracy and completeness. References to square footage or age are approximate. You and your advisors should conduct a careful, independent investigation of the property to determine to your satisfaction the suitability of the property for your needs. The information contained in this packet is proprietary and confidential, and should not be distributed to any other potential Tenant without the consent of Bagley Commercial Properties.



About Bagley Commercial

With over 53 years of combined experience, Bagley Commercial Properties stands among North Georgia's elite real estate firms. The 400 North Board's Circle of Excellence and the title of Best in Forsyth County Commercial Real Estate for six consecutive years. Based in Cumming, the brokerage specializes in industrial, office, retail, land, and commercial transactions. They're known for assembling land parcels for residential and commercial builders, leasing, or selling to national and local clients alike.

Bagley Commercial prides itself on a foundation of integrity, transparency, and exceptional service—now backed by a proven track record and deep local market knowledge.

For questions, contact.




Doug Sills


Commercial Sales & Leasing Specialist | Associate Broker


Doug Sills, commercial real estate is about more than buildings and numbers—it's about people, vision, and creating opportunities that last. A Georgia resident for nearly three decades, Doug brings both local expertise and a client-centered approach to every transaction. His background in psychology and professional counseling gives him a unique ability to understand client goals deeply and guide them with clarity and confidence.

Presented by: Doug Sills

 Doug@BagleyCommercial.com

 678-923-5538 (Cell)

 770-781-5935 (Office)

 BagleyCommercial.com

Specializing in industrial, retail, investment properties, and land acquisition, Doug helps developers, investors, and business owners make smart, strategic decisions. Whether assembling parcels for a new project, matching landlords with long-term tenants, or guiding investors to high-yield opportunities, he combines data-driven insight with a personal commitment to his clients' success.

 info@bagleycommercial.com

 www.BagleyCommercial.com

104 Pilgrim Village Drive, Suite 400, Cumming, GA 30040

Disclaimer: The information included in this packet has been obtained from sources believed to be reliable. While Bagley Commercial Properties does not doubt its accuracy, we do not make any guarantees or warranties with regard to the included information. It is your responsibility to independently confirm its accuracy and completeness. References to square footage or age are approximate. You and your advisors should conduct a careful, independent investigation of the property to determine to your satisfaction the suitability of the property for your needs. The information contained in this packet is proprietary and confidential, and should not be distributed to any other potential Tenant without the consent of Bagley Commercial Properties.

www.BagleyCommercial.com