

FOR LEASE

THE TOWERS AT WESTSHORE

1408 AND 1410

N WESTSHORE BLVD

WARD STREET CENTER

1309

N WARD STREET

Tampa, FL 33607



WESTSHORE BUSINESS DISTRICT

OFFICE SPACE FROM 2,500 TO 25,808 SF

- + Three-five year term
- + Immediate occupancy
- + Negotiable asking rate
- + Views of Tampa Bay and downtown Tampa Skyline
- + Ample surface and covered parking
- + Located one mile from Tampa International Airport and executive housing
- + Convenient to two major malls and a variety of additional shops and restaurants as well as numerous hotels

CBRE

FOR LEASE

THE TOWERS AT WESTSHORE

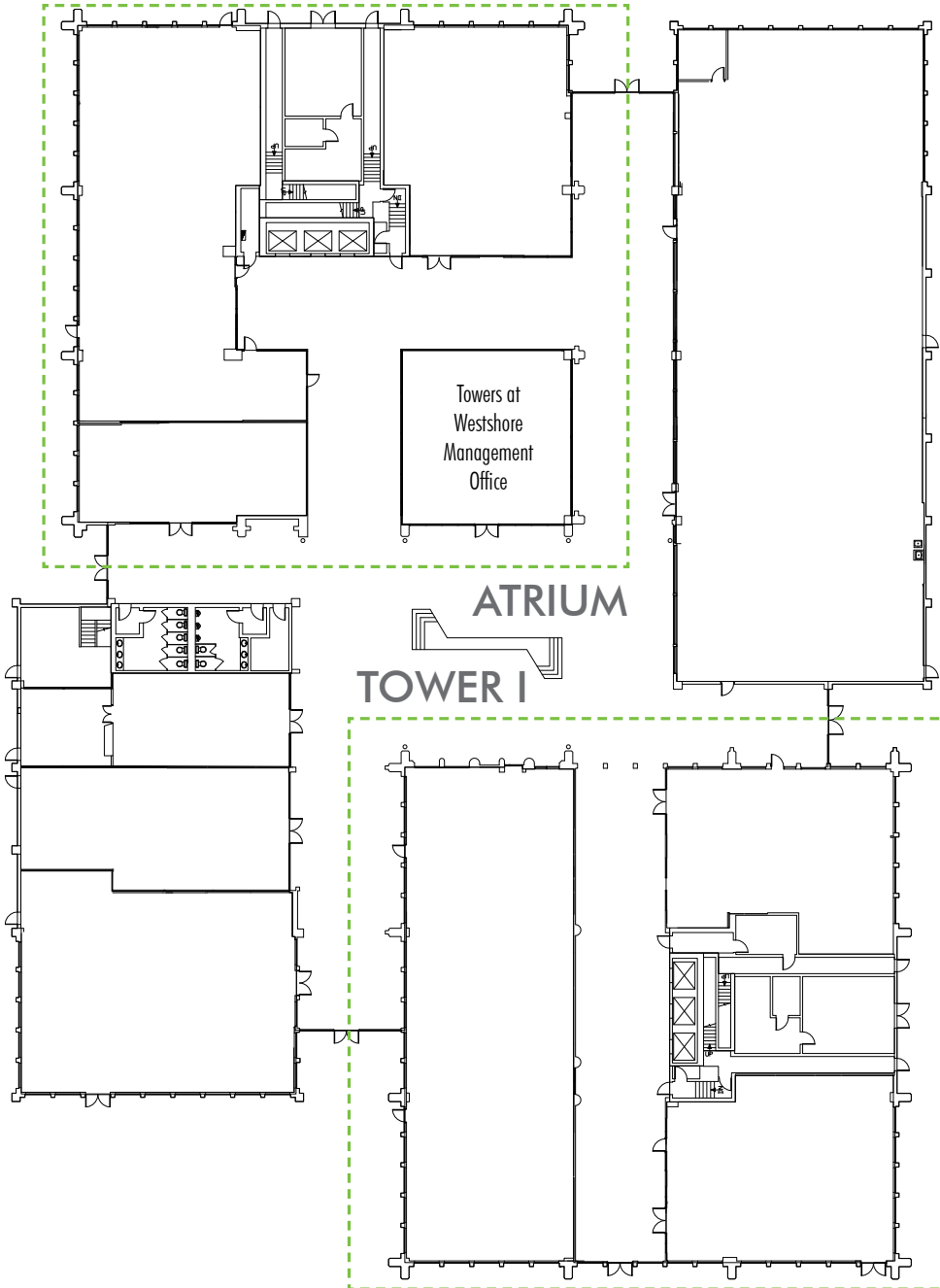
 Current/Upcoming Vacancies

Please verify availability with broker to assure most up-to-date information.



ATRIUM LEVEL (GROUND FLOOR)

TOWER II



Class A office buildings in the Westshore Business District

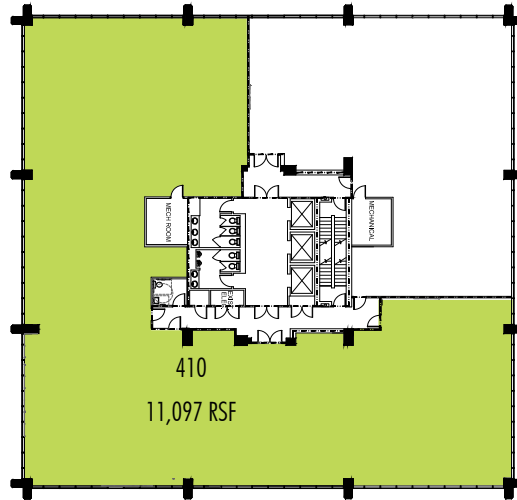
FOR LEASE

1408 AND 1410
N WESTSHORE BLVD

Tampa, FL 33607

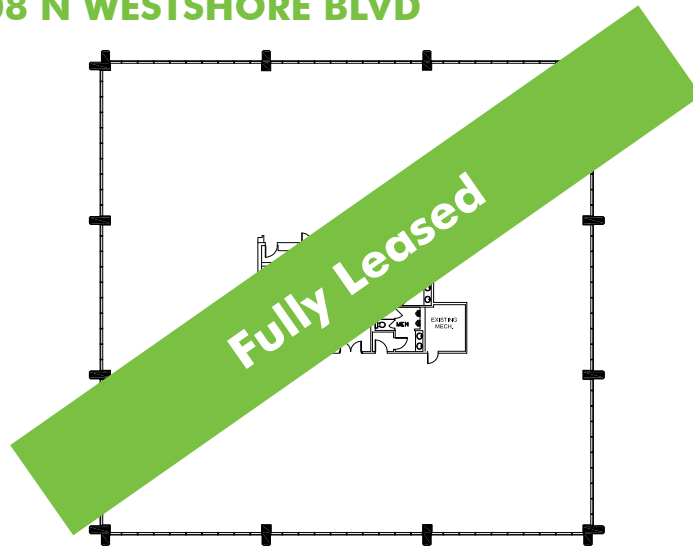


TOWER I - 1410 N WESTSHORE BLVD




Floor 4

TOWER II - 1408 N WESTSHORE BLVD





CURRENT/UPCOMING VACANCIES

Location	Rentable SF	Availability
Tower I		
Suite 410	11,097 RSF	Immediately
Tower II		
Fully Leased		
Ward Street Center		
		
1309 N Ward Street	25,808 RSF	Immediately



- + On-site management and service
- + On-site deli
- + Day porters and building engineers servicing building during business hours
- + Easy access to I-275, I-4 and Bay area bridges
- + Prominent Westshore Boulevard signage available

- + Century Link (formerly Level 3), Frontier and Spectrum Networks
- + 24-7 manned security
- + Numerous restaurants within walking distance
- + Convenient to two major malls and a variety of additional shops and restaurants as well as numerous hotels



WARD STREET CENTER

1309 N WARD STREET

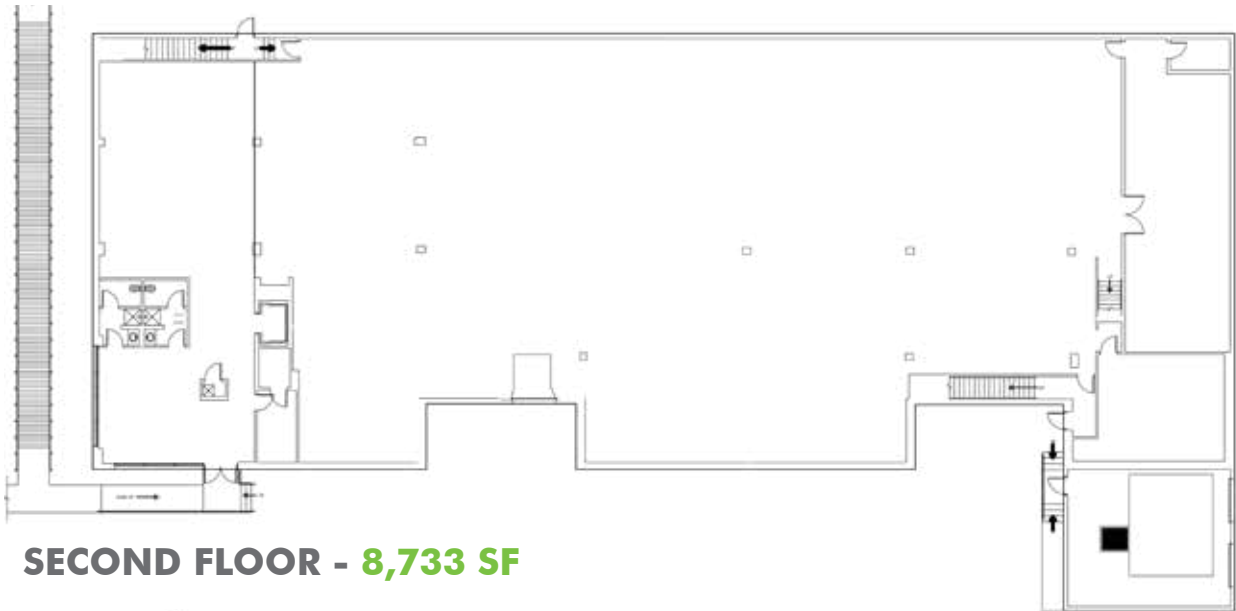


PROPERTY HIGHLIGHTS

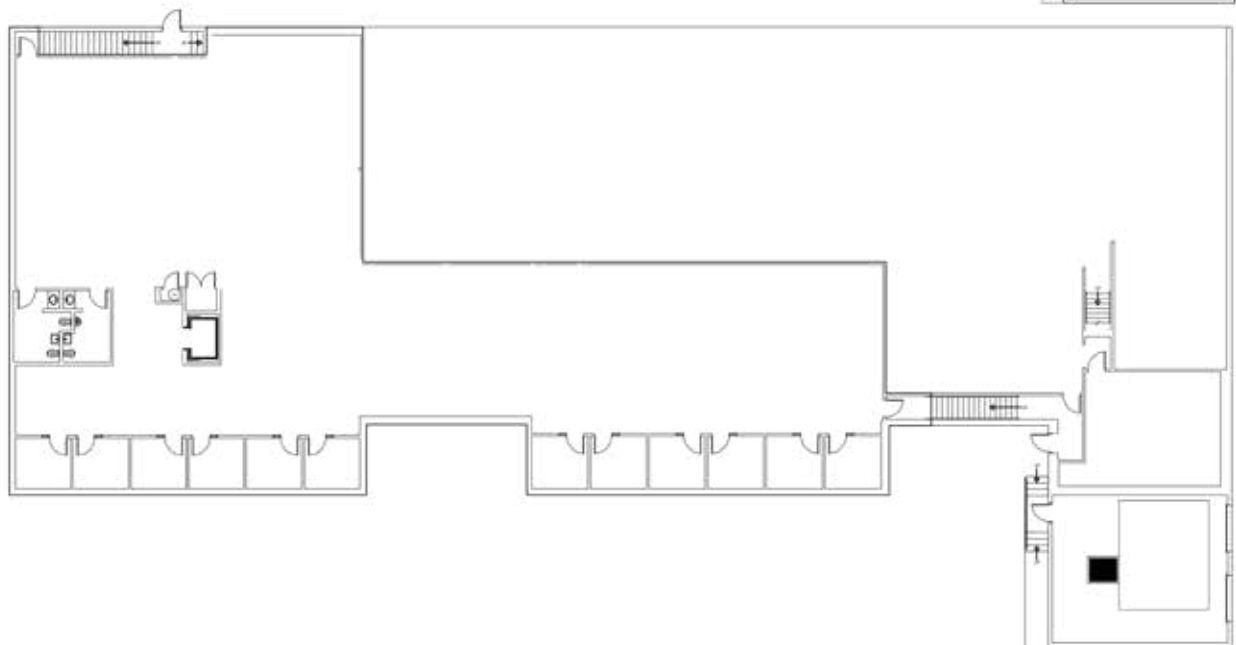
- + Building - 25,808 RSF - may be subdivided
- + Office space conveniently located in the Westshore Business District
- + Less than 10 minutes to Tampa International Airport and executive housing



FIRST FLOOR - 17,075 SF



SECOND FLOOR - 8,733 SF



FOR LEASE

THE TOWERS AT WESTSHORE WARD STREET CENTER



Ward Street Center

The Towers at Westshore

North Westshore Boulevard

1408 AND 1410
N WESTSHORE BLVD

1309
N WARD STREET

Tampa, FL 33607



FOR LEASE
**THE TOWERS AT WESTSHORE
WARD STREET CENTER**

1408 AND 1410
N WESTSHORE BLVD
1309
N WARD STREET
Tampa, FL 33607



CONTACT US

PHILIP WEBER

First Vice President
+1 813 380 8035
philip.weber@cbre.com

CBRE, Inc.
Licensed Real Estate Broker
101 E Kennedy Blvd, Suite 1500
Tampa, FL 33602

© 2019 CBRE, Inc. All rights reserved. This information has been obtained from sources believed reliable, but has not been verified for accuracy or completeness. You should conduct a careful, independent investigation of the property and verify all information. Any reliance on this information is solely at your own risk. CBRE and the CBRE logo are service marks of CBRE, Inc. All other marks displayed on this document are the property of their respective owners, and the use of such logos does not imply any affiliation with or endorsement of CBRE. Photos herein are the property of their respective owners and use of these images without the express written consent of the owner is prohibited.

