

# FOR LEASE

Cardiff Executive Center  
21,037 SF Office Building

# 120

Birmingham Dr. | 92007



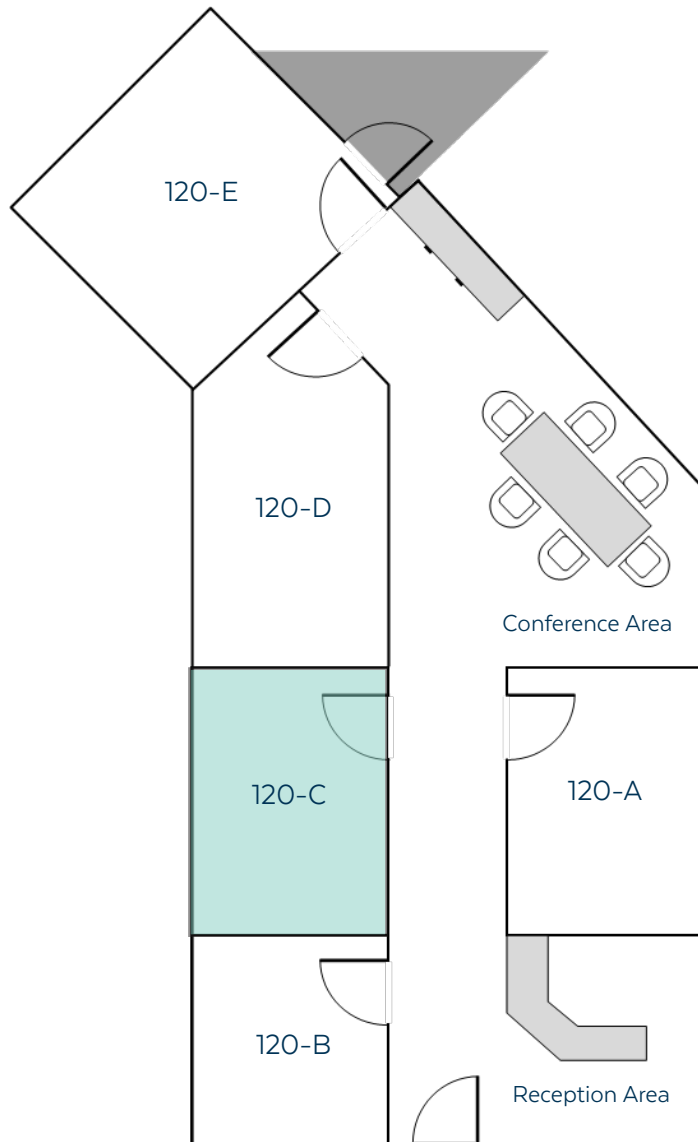
Alec Spencer, Senior Associate  
DRE #02140776 | 858.354.0577

MJ Fagan, Associate  
DRE #02206811 | 408.893.7363

 **Intersection**

# 120-C

First Floor | 160 SF



## AVAILABILITY

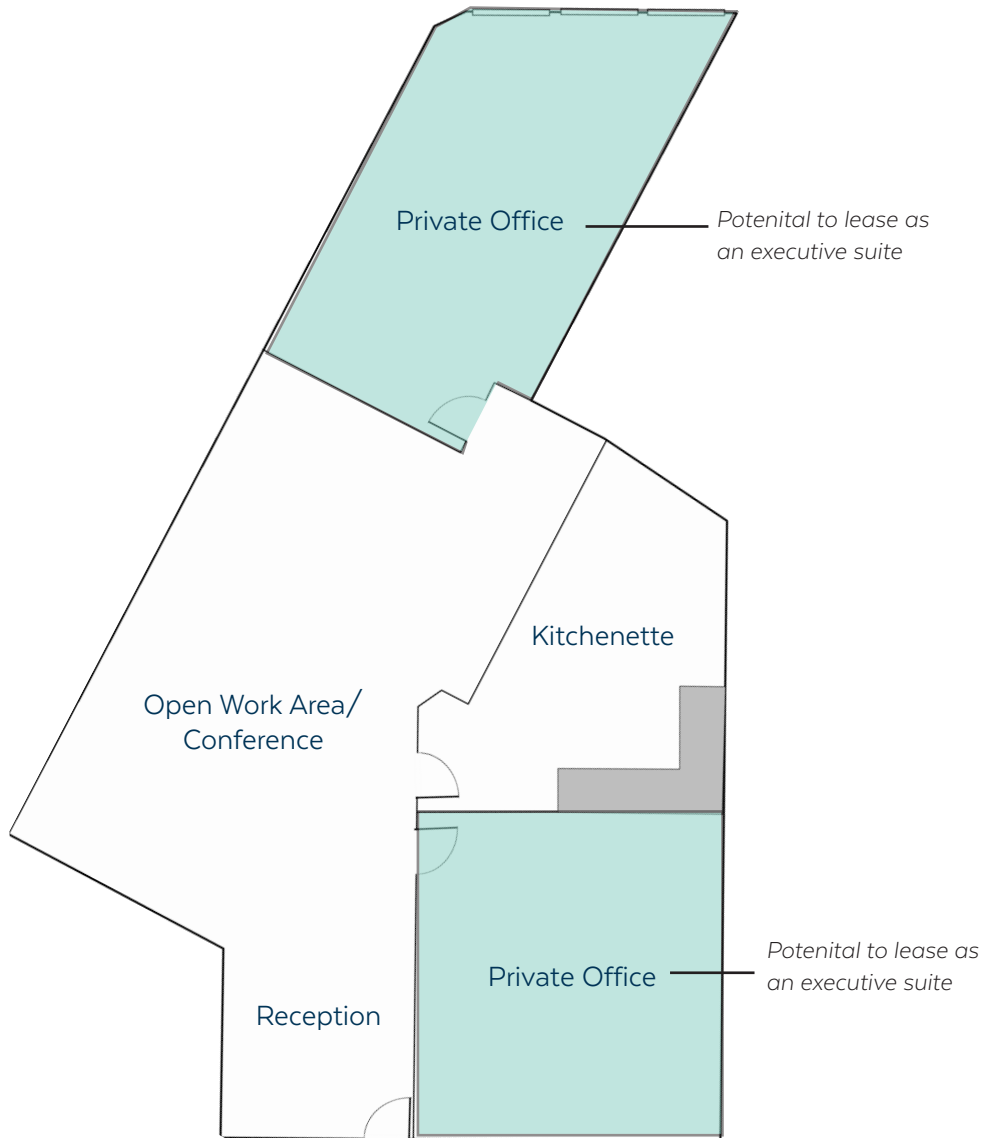
Suite 120-C	160 SF
Term	2-3 Years
Floor	First
Lease Rate	\$595/mo. +Util.

## FEATURES

- Shared Reception & Conference Area
- Common Area Restrooms
- Includes 1 Parking Space

# 140

First Floor | 1,100 SF



## AVAILABILITY

Suite 140	400-1,100 SF
Term	1-3 Years
Floor	First
Lease Rate	\$3.15/SF + Elec.

## FEATURES

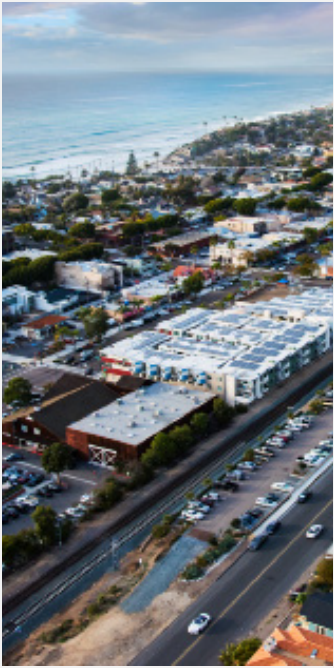
- Two Private Office
- Kitchenette
- VCT Flooring
- Shared Common Area Restrooms
- Includes 2 Reserved Parking Space
- Option to Lease Suite Fully Furnished



# PHOTOS

120 Birmingham Drive





# 92007

Thriving Demographics

Drive Time Mins To:

29

La Jolla

30

Downtown

19

Carlsbad

74°

+ SUNNY

Average year round weather



Located along six miles of Pacific coastline in northern San Diego County, the city of Encinitas offers a unique blend of old-world charm and sophistication, and new-world culture. Incorporated in 1986, the city brought together the communities of New Encinitas, Old Encinitas, Cardiff-by-the-Sea, Olivenhain and Leucadia to create a single city rich in history and steeped in tradition. With a population of 60,000 people, the City of Encinitas has something for everyone. With its pristine beaches and rolling hills, famous Botanic Garden and vibrant downtown business district, the City of Encinitas attracts visitors from all over the world.

The century-old Downtown 101 coastal shopping district features historic architecture, quaint shops, sidewalk cafes, specialty retail stores and upscale restaurants. *Sited From Encinitas*



700k

Med. Home Value



68,594

Population



116K

Med. HH Income



64%

Persons with a Degree

"TOP 20  
BEST SURF  
TOWNS"

-NATIONAL GEOGRAPHIC

# GET IN TOUCH

## ALEC SPENCER

Senior Associate  
DRE #O2140776

MOBILE: **858.354.0577**  
**aspencer@intersectioncre.com**

## MJ Fagan

Associate  
DRE #O2206811

MOBILE: **408.893.7363**  
**mjfagan@intersectioncre.com**

## Disclosure

The information set forth herein has been received by us from sources we believe to be reliable, but we have made no independent investigation of the accuracy or completeness of the information and make no representation with respect thereto. The above is submitted to errors, prior sale or lease, change in status or withdrawal without notice.

DRE Lic #02208857



©2024 Intersection.

PHONE  
**619.239.1788**

ADDRESS  
**110 West A St, Suite 1125  
San Diego, CA 92101**

WEBSITE  
**[www.intersectioncre.com](http://www.intersectioncre.com)**