

8973 S STATE ROUTE 201

Tipp City, OH 45371-7310

FOR LEASE

\$ 6.75 SF



PROPERTY HIGHLIGHTS

- **12,000 sf industrial building.**
- **Roll-up door—14'W X 12'H .**
- **480 amps, overhead crane, plenty of employee parking area, plus large fenced parking/storage area in rear.**
- **Ceiling height—15'. 1,200 sf office with lunch/kitchen area.**
- **Just north of Huber Heights on St Rt 201, approximately 2 miles North of I-70, and 1.5 miles South of US 40.**
- **Tipp City address.**

AL CUMMINGS

937-241-9047

acummings@hricommercial.com

2288 Grange Hall Rd. Beaver Creek, OH 45431



The information contained herein has been obtained from the property owner or other sources that we deem reliable. Although we have no reason to doubt its accuracy, no representation or warranty is made regarding the information.. The submission may be modified or withdrawn at any time by the property owner.

8973 S STATE ROUTE 201

FOR LEASE

Tipp City, OH 45371-7310

\$ 6.75/ SF



- **480 amps**
- **Overhead crane**
- **Plenty of employee parking area**
- **Large fenced parking/storage area**



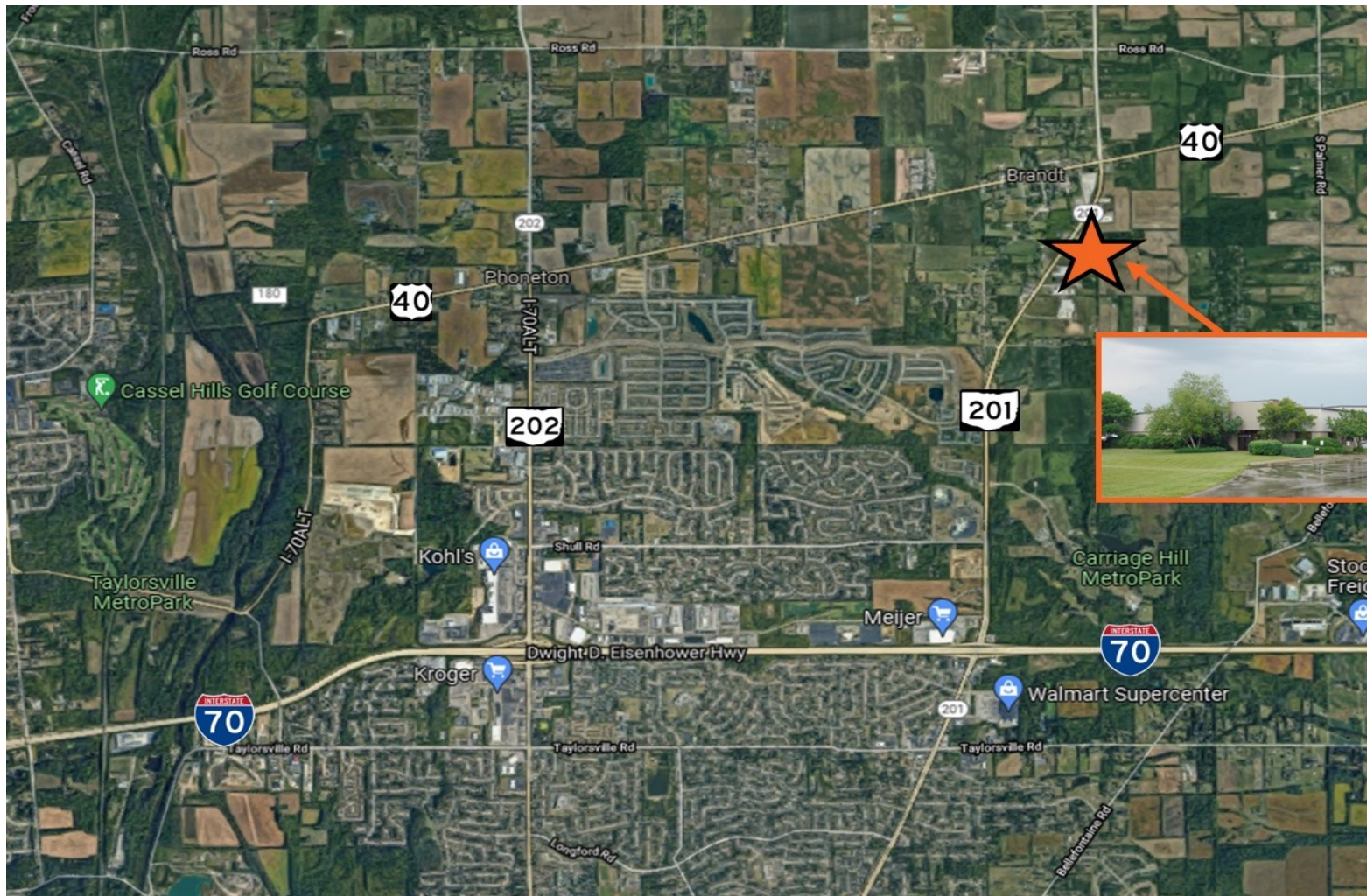
The information contained herein has been obtained from the property owner or other sources that we deem reliable. Although we have no reason to doubt its accuracy, no representation or warranty is made regarding the information. The submission may be modified or withdrawn at any time by the property owner.

8973 S STATE ROUTE 201

Tipp City, OH 45371-7310

FOR LEASE

\$ 6.75/ SF



- **Just north of Huber Heights on St Rt 201, approximately 2 miles North of I-70, and 1.5 miles South of US 40.**
- **Tipp City address.**



The information contained herein has been obtained from the property owner or other sources that we deem reliable. Although we have no reason to doubt its accuracy, no representation or warranty is made regarding the information. The submission may be modified or withdrawn at any time by the property owner.