



TROUT DANIEL & ASSOCIATES  
BUY. SELL. LEASE. ADVISE.



6615

6609

AVAILABLE  
TD&A  
TROUT DANIEL & ASSOCIATES  
410-435-4004  
troutdaniel.com  
BUY • SELL • LEASE • ADVISE

6615 - 6609 REISTERSTOWN

Choice Pain & Rehabilitation Center	Law Office of Robert M. Johnson, Jr.
University of Maryland Extension Baltimore City	LAW Benford Aday of Change Consulting Services
MHC Health Care	Sonia Chhabra Healthcare Services Horseshoe Mental Health Services
American Academy Neurology Technicians	LaMonte Physical Therapy Charm City Community Care Academy 516 Partners Child Development Program

# 6609-6615 Reisterstown Road

Office Building for Lease  
6609-6615 Reisterstown Road | Pikesville | MD 21215

# Property Summary

---

## Offering Summary

---

Lease Rate:	Negotiable
Building Size:	26,063 SF
Available SF:	1,300-2,633 SF
Lot Size:	1.55 Acres
Zoning:	C-2

---

## Property Highlights

---

- Class A amenities
- In the heart of Northwest Baltimore
- Highly visible location
- Generous surface parking on the side and rear premises
- Condo Environment
- Bright and updated interior



## Location Overview

---

Newly renovated 26,063 SF office building on Reisterstown Road in Baltimore, Maryland. This property offers excellent signage, 140 surface parking spaces, and proximity to many bus lines. The property is also close to local restaurants and fast-food chains.

# Lease Spaces



## Lease Information

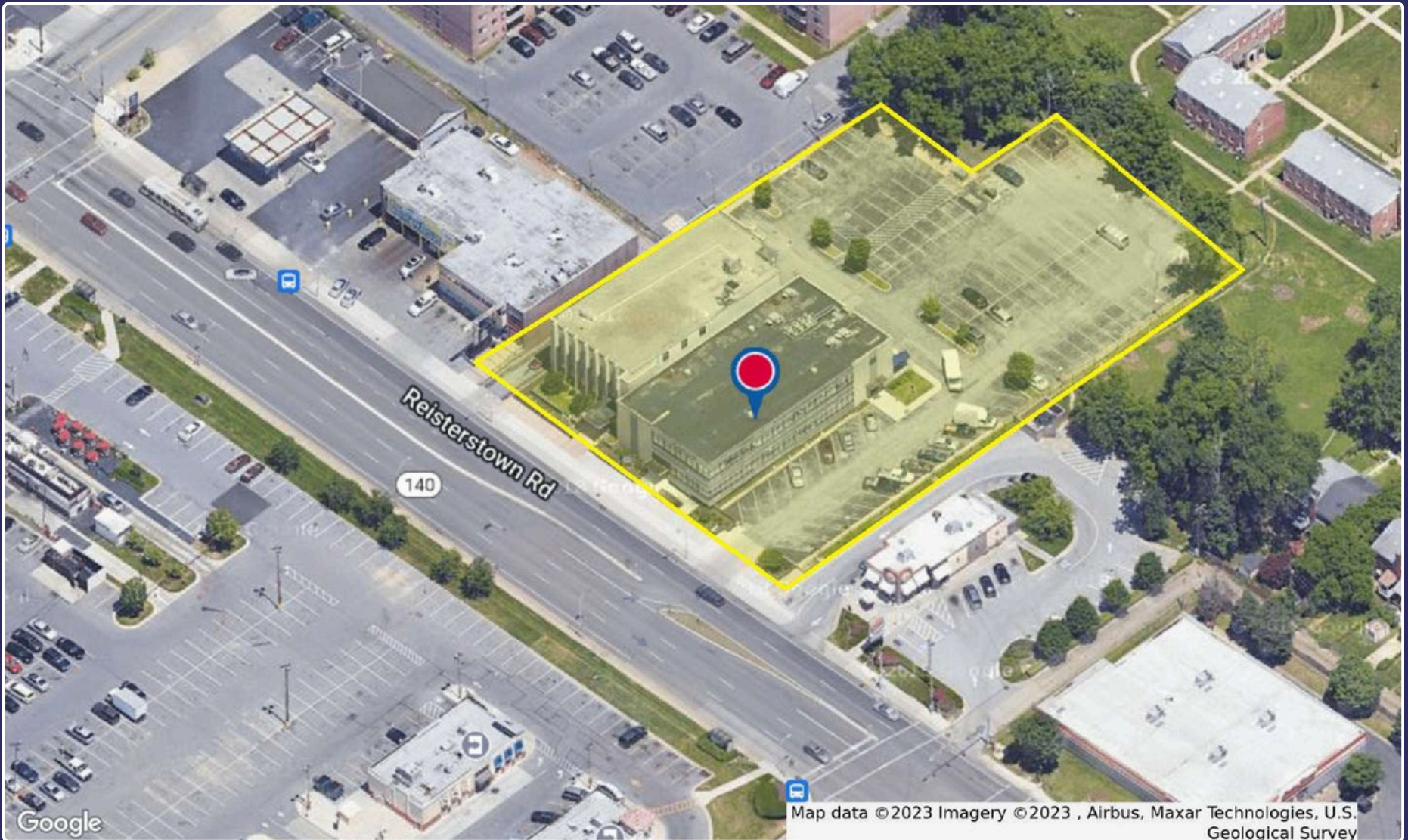
Lease Type	Modified Full Service
Total Space:	1,300-2,633 SF
Lease Term:	Negotiable
Lease Rate:	Negotiable



## Available Spaces

Suite	Tenant	Size (SF)	Lease Type	Lease Rate
107-N	Available	1,300-2,633	Modified Full Service	Negotiable

# Aerial Map



6609-6615 Reisterstown Road | Pikesville | MD 21215

# Retail Map



6609-6615 Reisterstown Road | Pikesville | MD 21215

**Coleman Tirone**

Associate

📞 O: 443.921.9328

✉️ ctirone@troutdaniel.com

**Contact Us**

📍 **30 E. Padonia Road, Suite 504**  
Timonium, MD 21093

🌐 **Visit Us**  
troutdaniel.com

📞 **Call Us**  
410.435 .4004

The information contained in this marketing brochure has been obtained from sources we believe to be reliable; however, Trout Daniel & Associates LLC has not verified, and will not verify any of the information contained herein, nor has Trout Daniel & Associates LLC conducted any investigation regarding these matters and makes no warranty or representation whatsoever regarding the accuracy or completeness of the information provided. An agent indicated by an asterisk (\*) has a direct or indirect ownership interest in this property.

