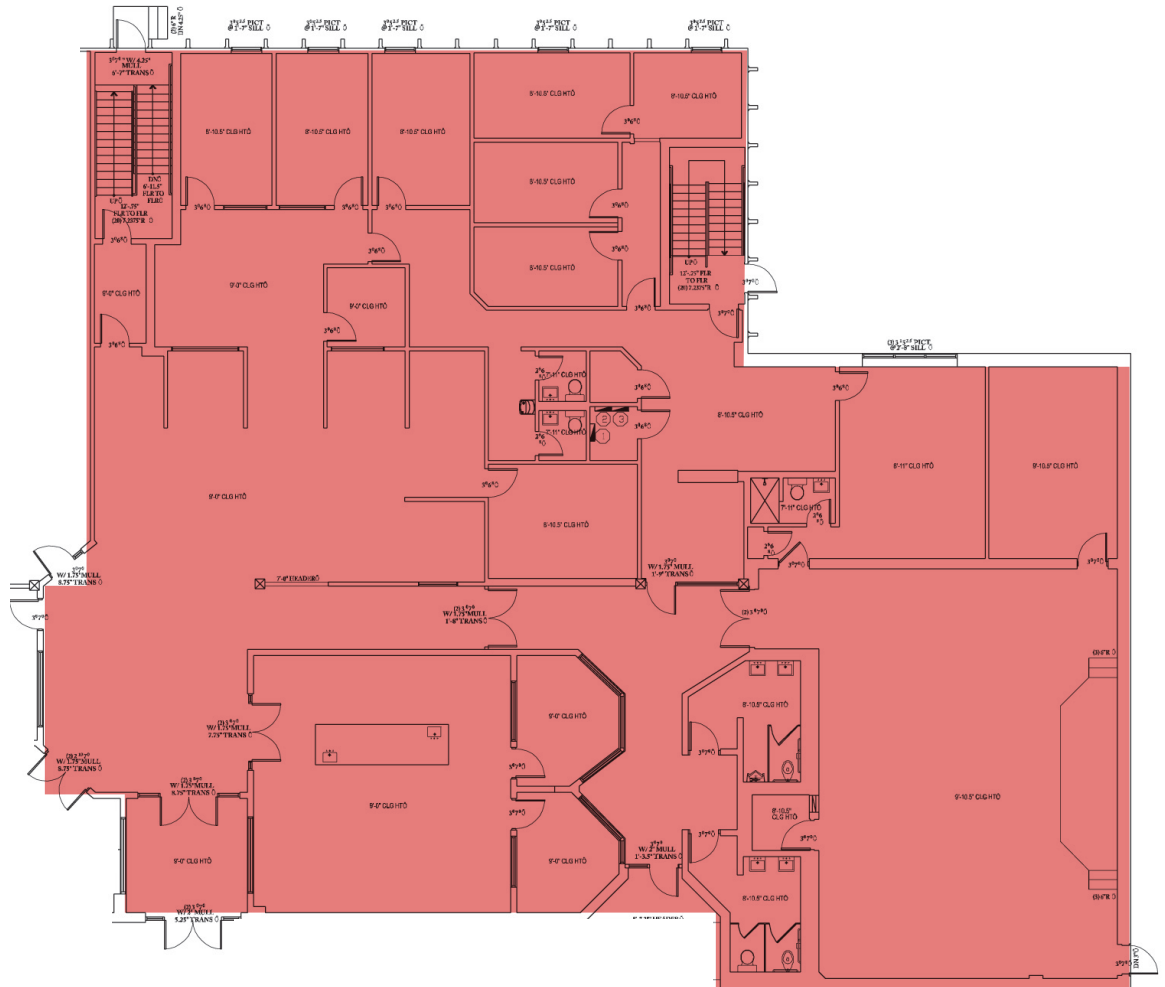


# 981 Howell Mill

West  
Midtown



## Ground Floor

STE 100 | 8,976 SF±

Matthew J. Levin, CCIM

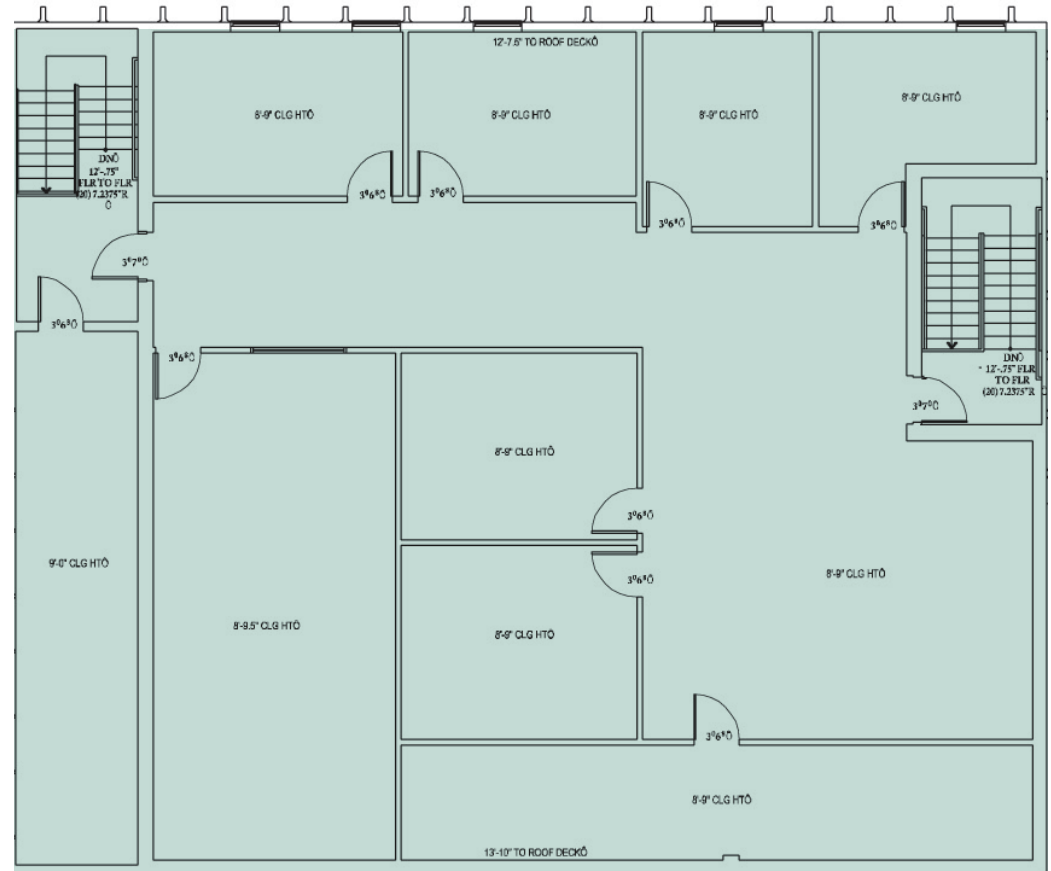
SVN | Interstate Brokers

3300 Holcomb Bridge Road, S-240 | Peachtree Corners, GA 30092

T. 770.209.1700 x1 | M. 678.467.9658 | levinm@svn.com | www.svn.com



# 981 Howell Mill *West Midtown*



## 2nd Floor

STE 100 | 3,884 SF±

**Matthew J. Levin, CCIM**

**SVN | Interstate Brokers**

3300 Holcomb Bridge Road, S-240 | Peachtree Corners, GA 30092

T. 770.209.1700 x1 | M. 678.467.9658 | levinm@svn.com | www.svn.com

