

❑ **Parcels:** 200-13-027, 200-13-032, 200-05-126, 220-05-127, 220-13-033, 220-15-256B, 220-15-255A, 220-15-254A, 220-15-253B, 220-05-118B, 220-05-117A

❑ **Size:** +/- 387.36 Acres (Total)

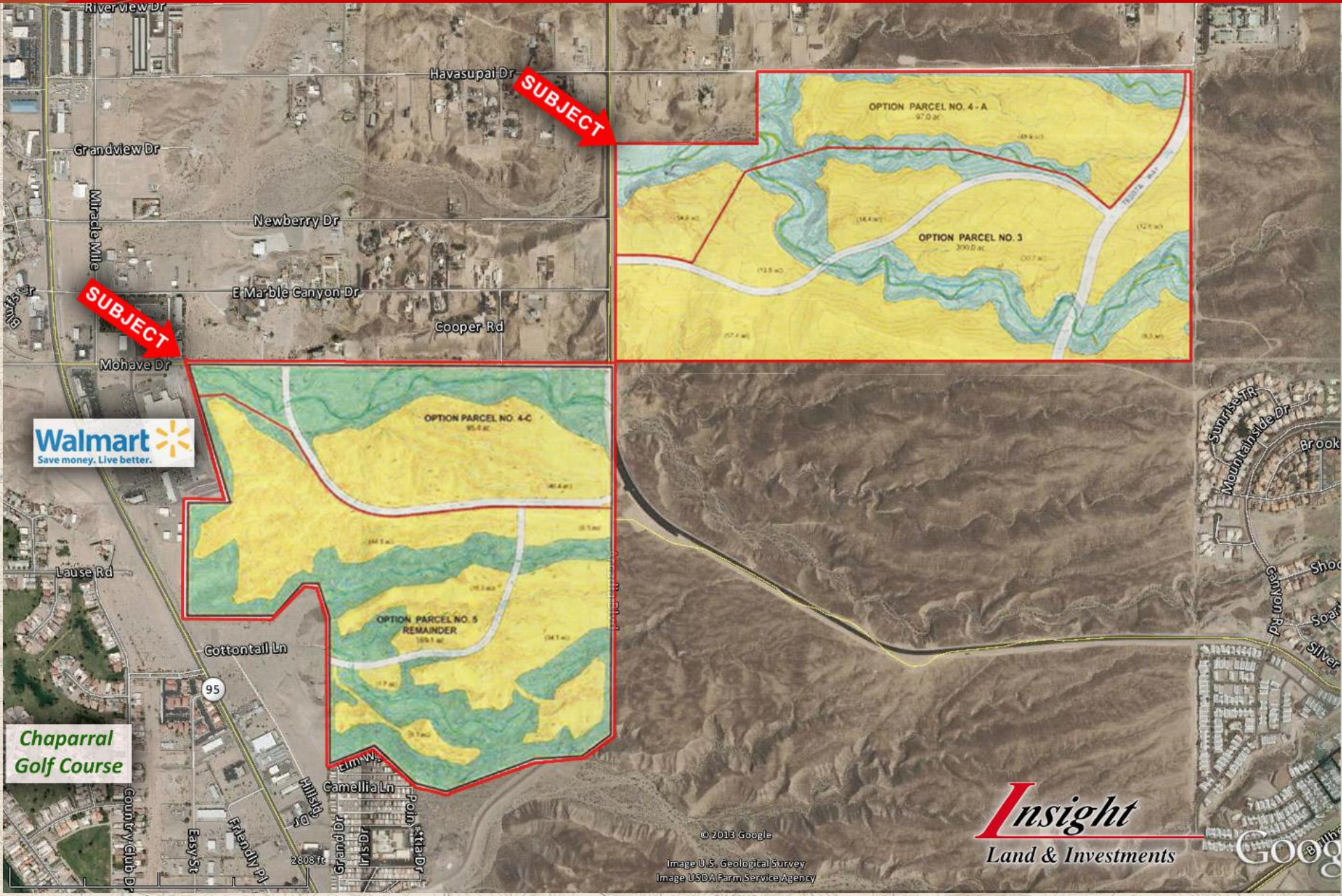
❑ **Zoning:** Jurisdiction of Mohave County. Contact Mohave County for current zoning.

❑ **Comments:**

- Potential use for residential development (preliminary development plan in place)
- Grant access to Highway 95, Bullhead City amenities and retail centers
- Frontage on Mohave Drive, Arcadia Way, Havasupai Drive, and Tesota Way
- Access and visibility from Highway 95

387 LAND FOR SALE

BULLHEAD CITY, AZ



**Chaparral**  
Golf Course

