

**48,456 sf available**



## Well-maintained food/cold storage and distribution facility.

- 48,456 sf building.
- 16,683 sf secured lot for car parking or trailer storage.
- Zoned M1-1.
- 18' clear height.
- Heavy power: 2,000 amps, 480 volts.
- Four (4) docks and three (3) drive-in doors.
- Lease rate is subject to offer.
- Sale price is subject to offer.



Well-located in the Crawford Industrial Park



Excellent access to I-55 expressway



Newly renovated office space



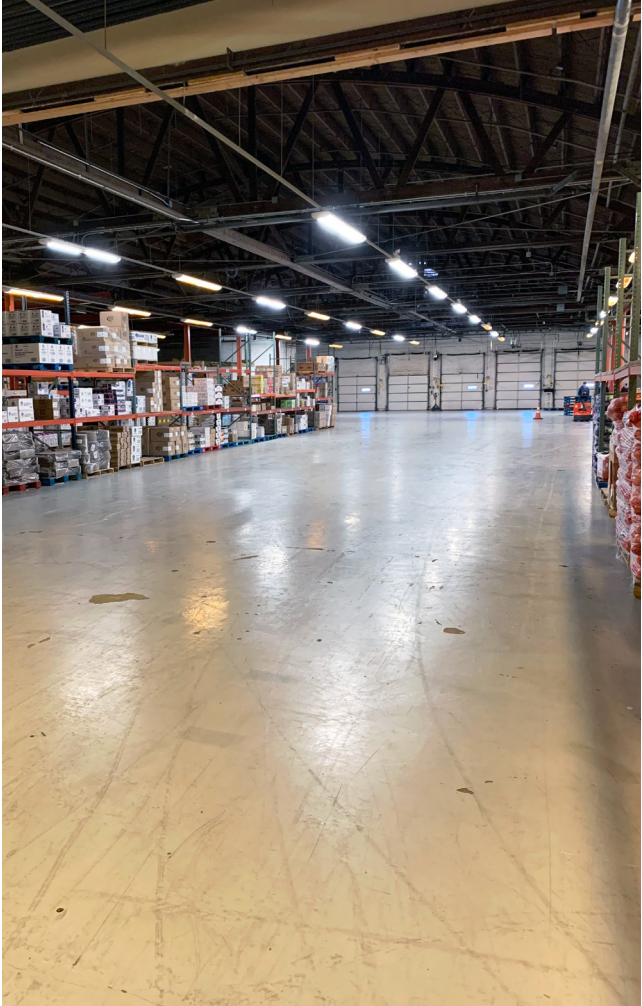
5,000 sf cooler and 3,000 sf freezer spaces

## For more information

**Jay Maher**  
Industrial Practice Group  
D 847.232.8605  
C 773.520.5111  
[jay.maher@avisonyoung.com](mailto:jay.maher@avisonyoung.com)

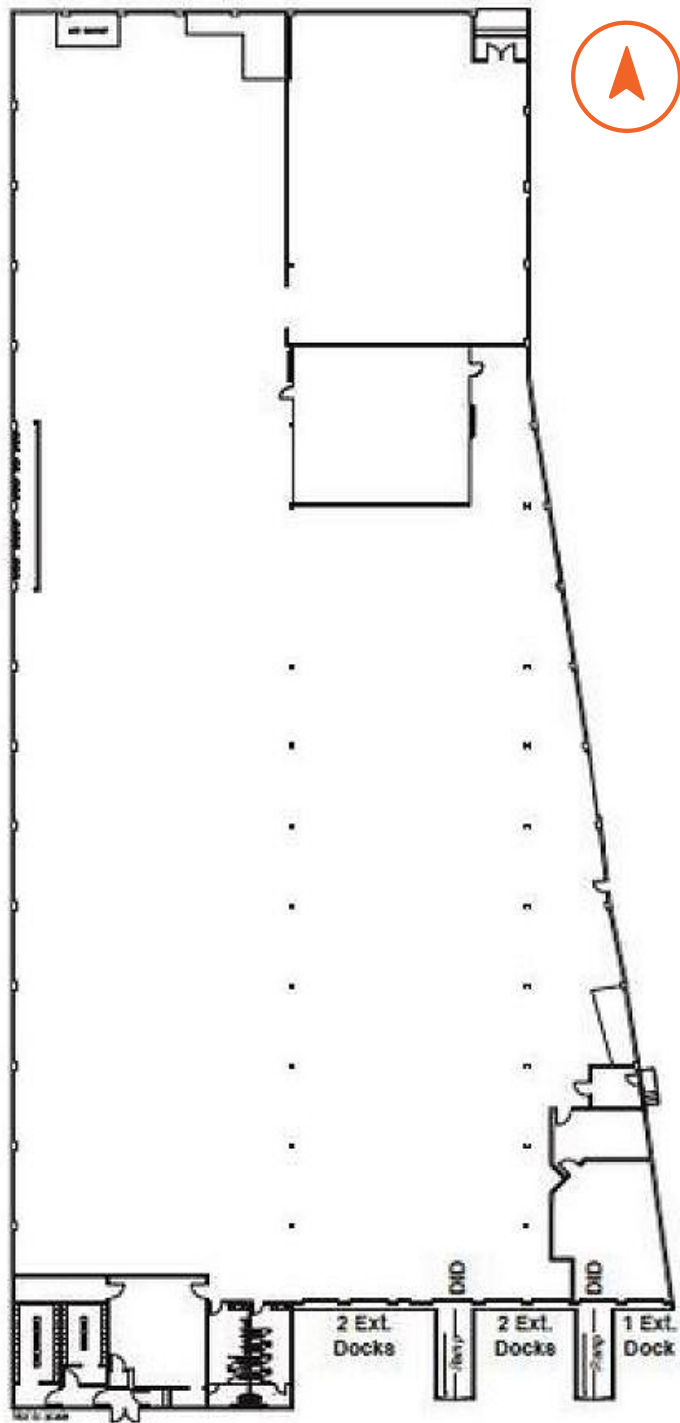
# Property photos

Available  
4235 W. Ann Lurie Place  
Chicago, IL 60632



48,456 sf

4235 W. Ann Lurie Place  
Chicago, IL 60632



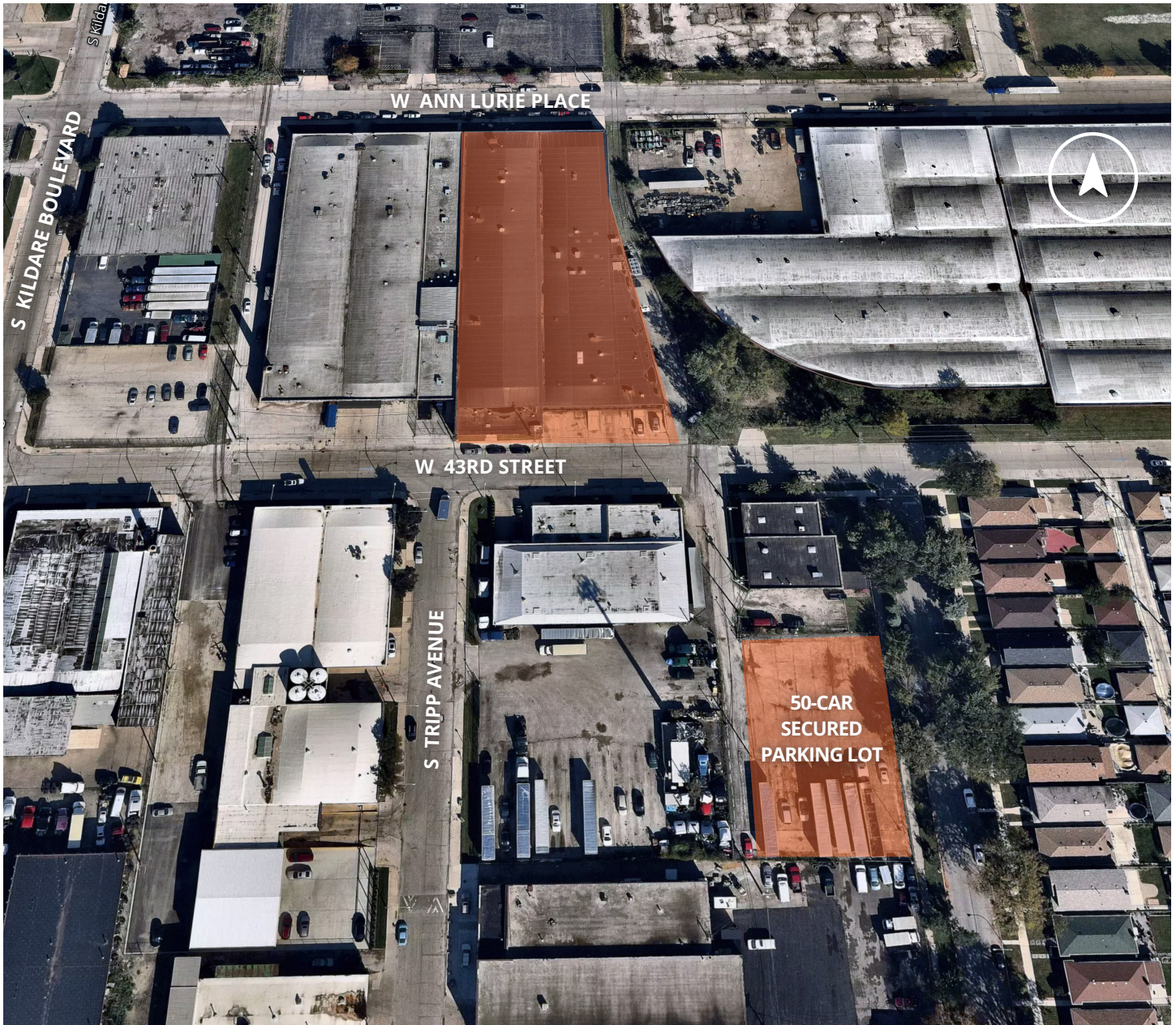
For more  
information

Jay Maher  
Industrial Practice Group  
D 847.232.8605  
C 773.520.5111  
jay.maher@avisonyoung.com

AVISON  
YOUNG

# Aerial view

4235 W. Ann Lurie Place  
Chicago, IL 60632

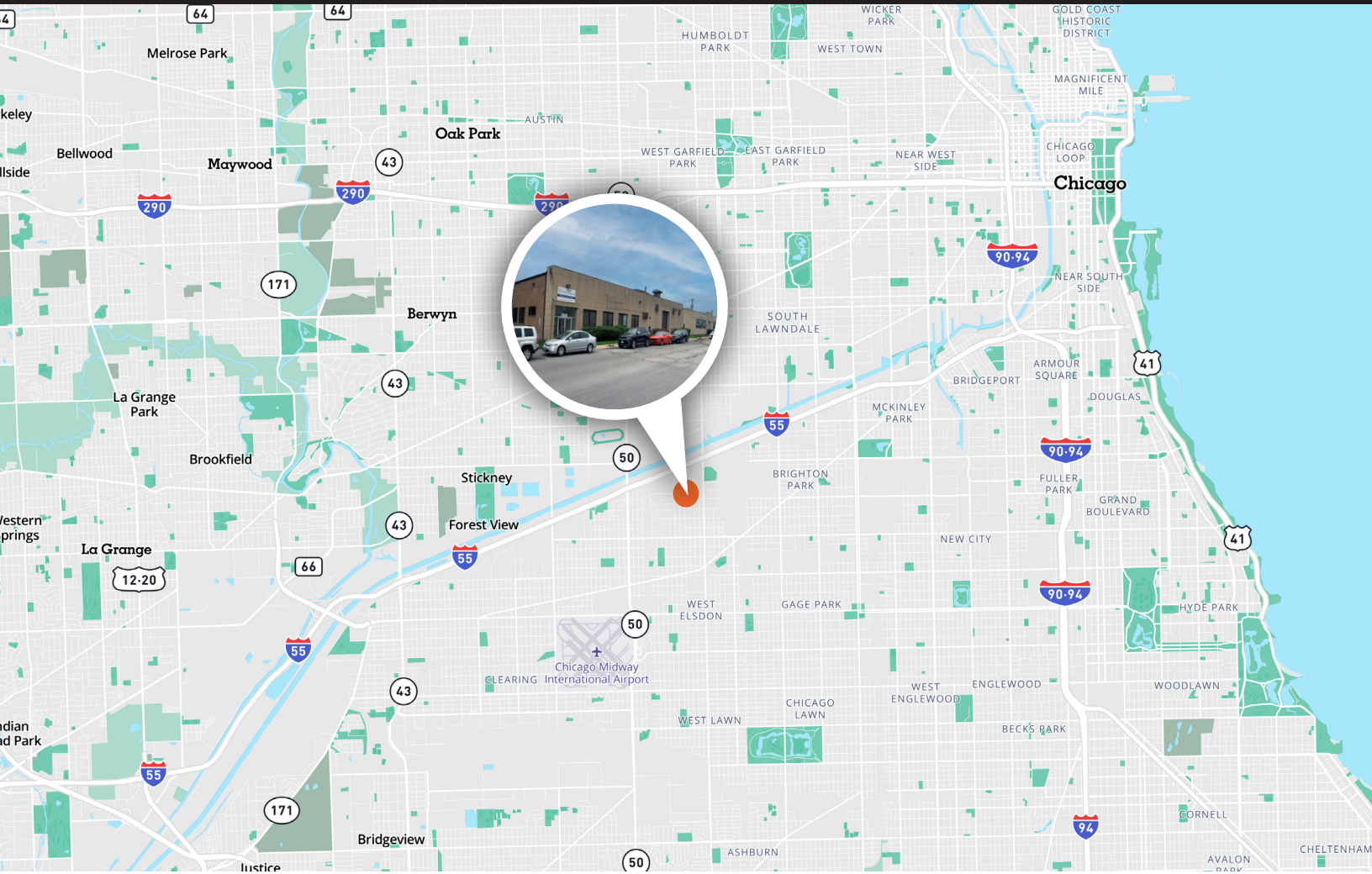


For more  
information

**Jay Maher**  
Industrial Practice Group  
D 847.232.8605  
C 773.520.5111  
[jay.maher@avisonyoung.com](mailto:jay.maher@avisonyoung.com)

**AVISON  
YOUNG**

# MAP



For more information, please contact:

Jay Maher  
Senior Vice President, Industrial Practice Group  
jay.maher@avisonyoung.com  
O: 847.232.8605  
C: 773.520.5111

---

avisonyoung.com

---

© 2023 Avison Young - Chicago, LLC.

All rights reserved. E. & O.E.: The information contained herein was obtained from sources which we deem reliable and, while thought to be correct, is not guaranteed by Avison Young.

**AVISON  
YOUNG**