

100 Marketplace

Rare Office Availability
25 Mountainview Blvd
Basking Ridge, NJ 07920
Somerset County

PROPERTY DESCRIPTION

Prominent Basking Ridge address, mixed-use class "A" construction, comprising 58,134 SF. Ground Floor currently 100% leased and occupied, with a plethora of national retail tenants. 100 Marketplace offers extensive pedestrian walkways and manicured grounds. On-site parking for 265 cars (84 spaces under building). Signalized intersection, 100 Marketplace of Martinsville Liberty Corner road (CR 525), situated on nine expansive acres within the 800,000 SF Mountainview Corporate Center.

AVAILABLE OFFICE SPACE

2nd Floor Office/Medical

- Unit 206B: 3,836 SF
- Unit 208: 1,233 SF

RENTAL RATES

Upon request, subject to use and creditworthiness

CAM & REAL ESTATE TAXES

+/- \$9.29 PSF projected 2024 plus sewer consumption and garbage

TRAFFIC COUNTS

ADT 17,355 Martinsville Road/Liberty Corner Road (CR525) intersection



FOR ADDITIONAL INFORMATION CONTACT EXCLUSIVE LEASING AGENT

Emily Barreira
Associate Brokerage Department
908.604.6900 Ext. 120
ebarreira@silbertrealestate.com

Christian Harrington
Associate Brokerage Department
908.604.6900
charrington@silbertrealestate.com

SILBERT
REALTY & MANAGEMENT COMPANY, INC.

152 Liberty Corner Road
Suite 203
Warren, NJ 07059

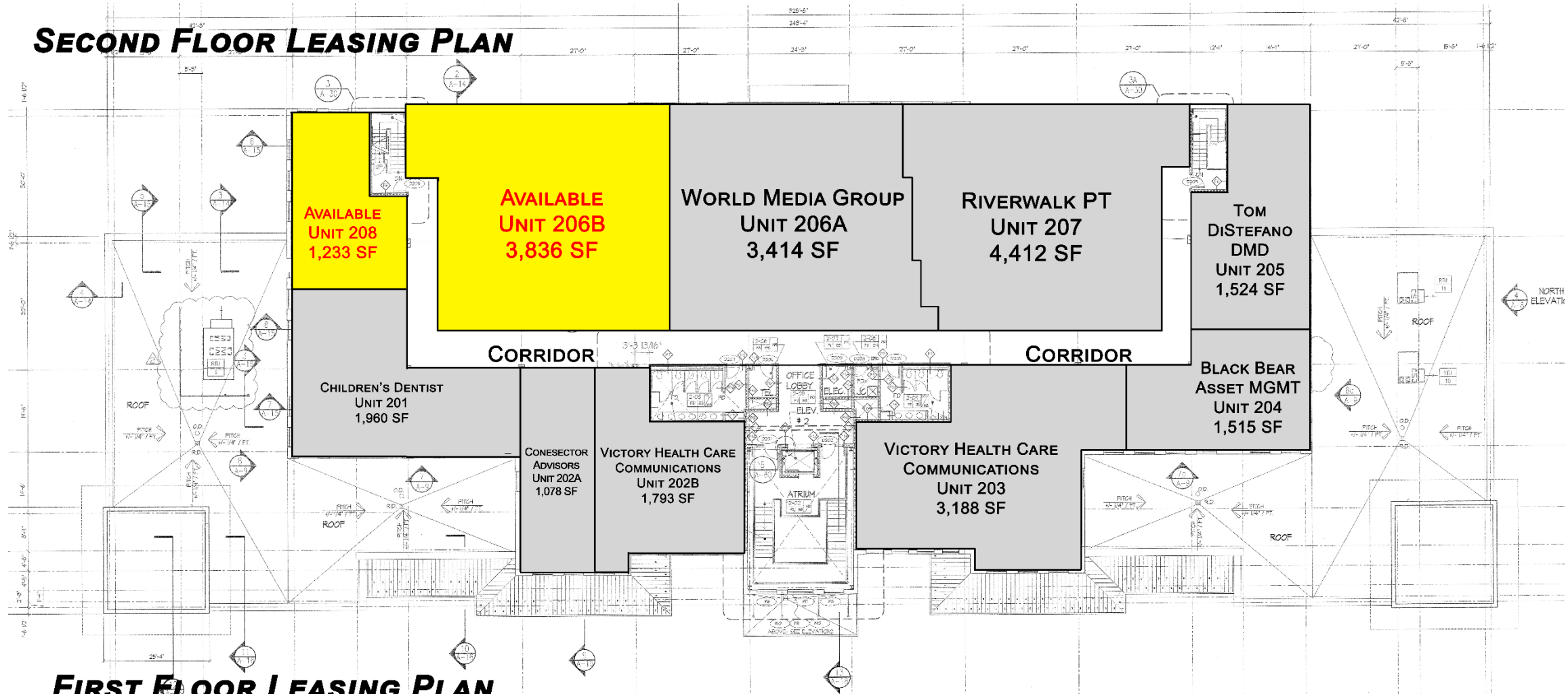
Linked 



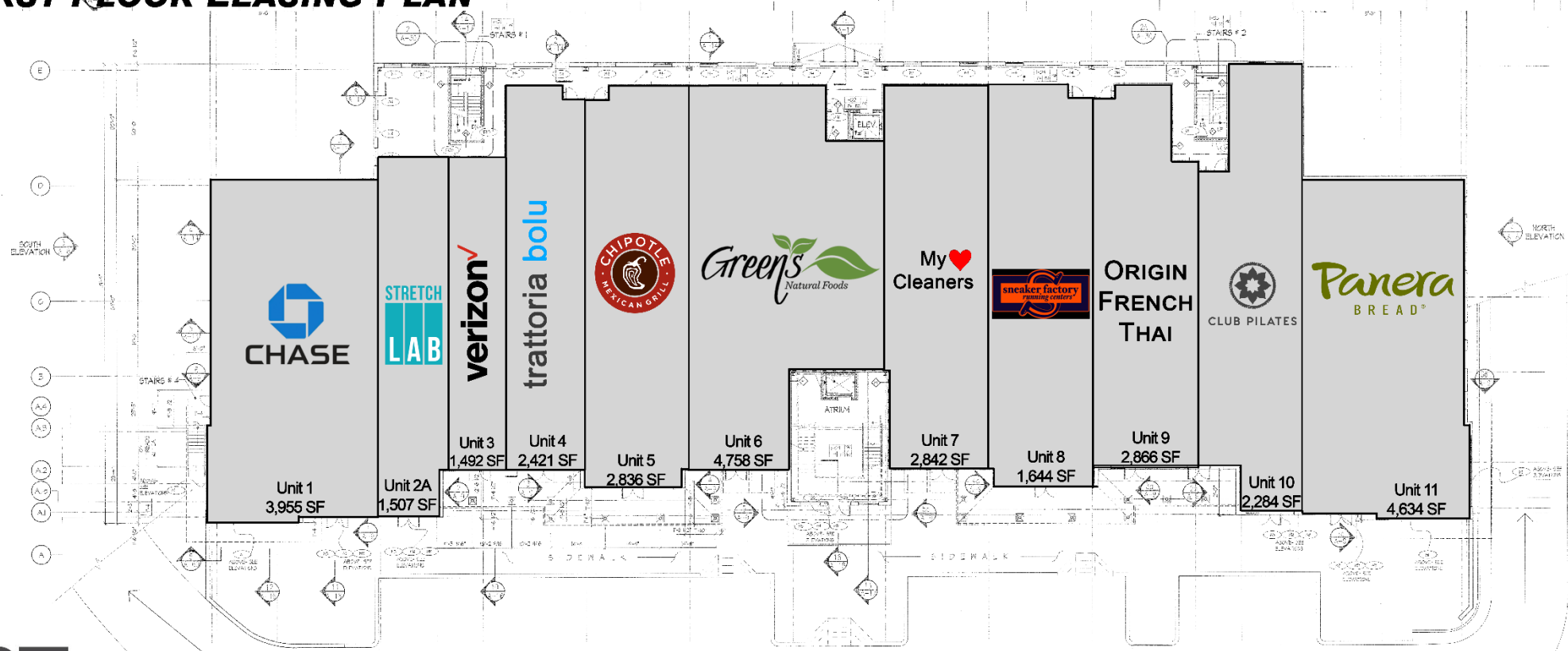
Visit Our Website: WWW.SilbertRealEstate.com

LEASING PLANS

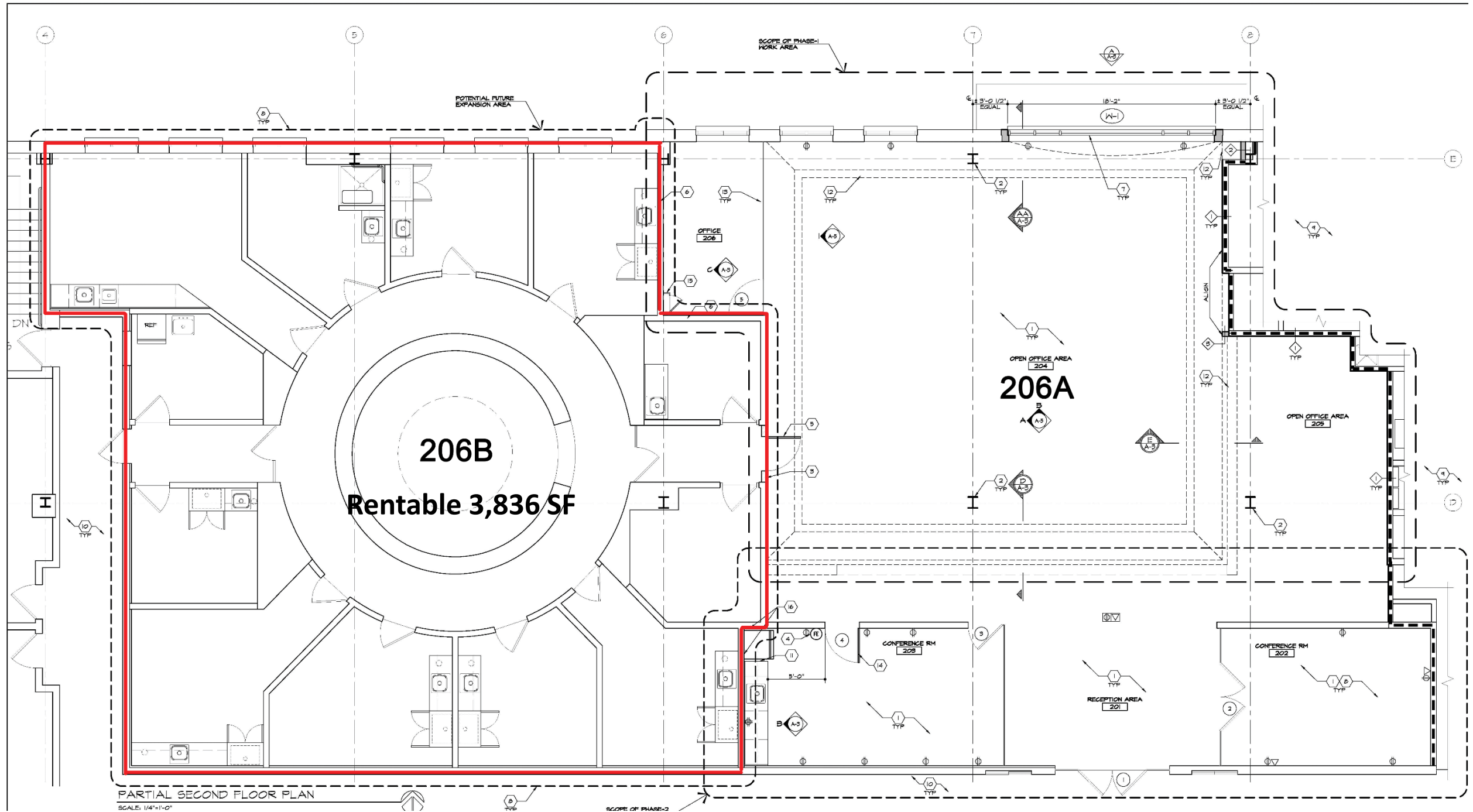
SECOND FLOOR LEASING PLAN



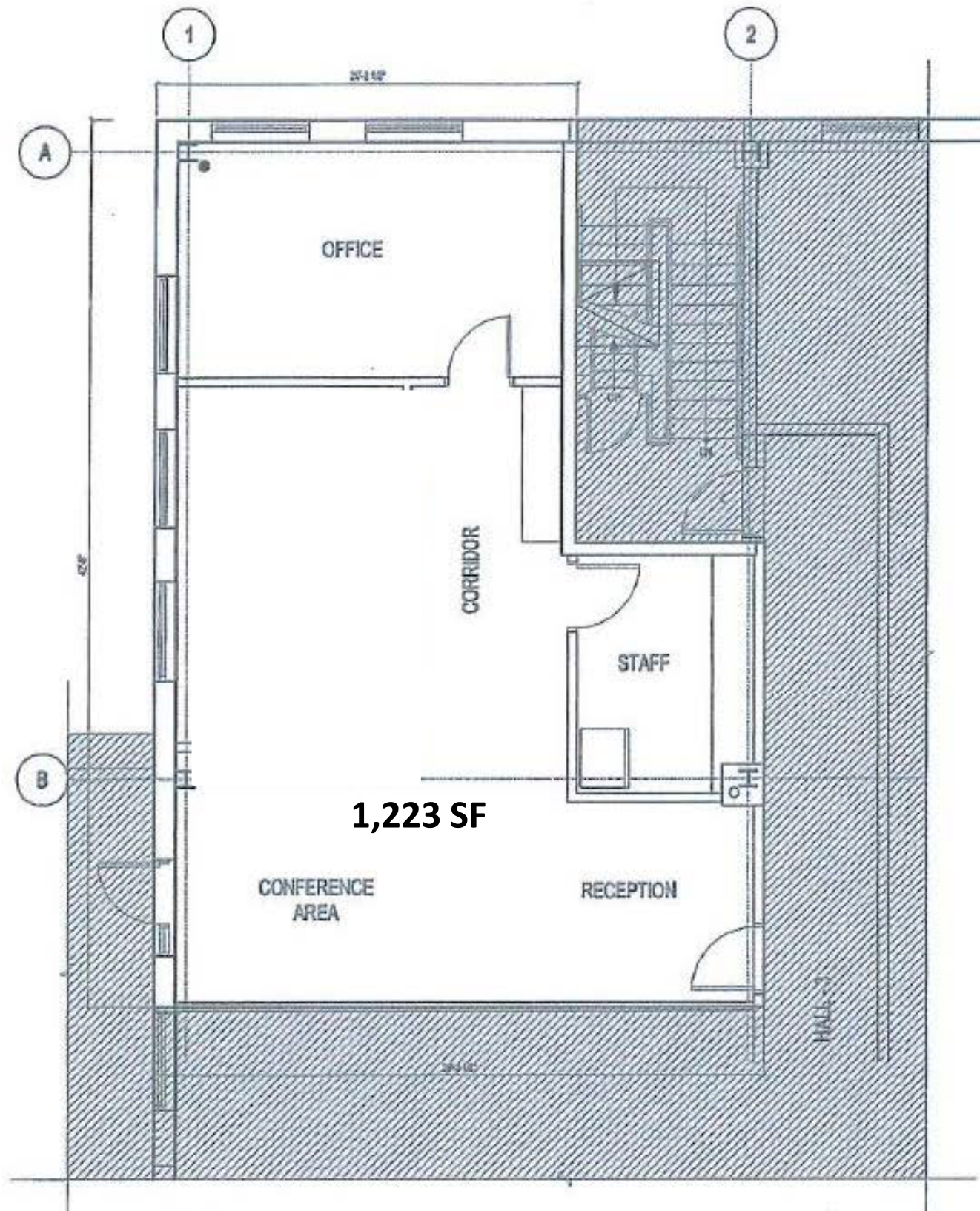
FIRST FLOOR LEASING PLAN



UNIT 206B FLOOR PLAN



UNIT 208 FLOOR PLAN



IMMEDIATE TRADE AREA AERIAL



AREA DEMOGRAPHICS

2 Mile Radius

Population	13,738
Median HH Income	\$176,198
Average HH Income	\$217,025
Median Age	44.6
Total Households	4,910
Daytime Population	10,384

3 Mile Radius

Population	21,983
Median HH Income	\$177,299
Average HH Income	\$226,762
Median Age	45.4
Total Households	11,965
Daytime Population	25,975

5 Mile Radius

Population	78,003
Median HH Income	\$164,704
Average HH Income	\$218,695
Median Age	45.9
Total Households	28,616
Daytime Population	69,501

