

FOR LEASE

18300 Snow Road

Brook Park, Ohio 44142

Available for
Immediate Occupancy



FORWARD INNOVATION CENTER – BROOK PARK

364,000 SF High Cube Class A Industrial Building
with Immediate Access to Interstate 71 and Interstate 480.

**143,000 SF of
32' Clear Warehouse
Available**



PROPERTY FEATURES



364,000 SF

TOTAL BUILDING SIZE

143,000 SF
(divisible to 52,000 SF)

TOTAL SPACE AVAILABLE

33.27 ACRES

TOTAL SITE SIZE

\$7.50/SF NNN

LEASE RATE

\$2.95/SF

(Taxes are \$2.20 SF)

ESTIMATED NNN EXPENSES

CURRENT AVAILABILITIES

UNIT 2

143,000 SF

TOTAL SPACE
AVAILABLE

TO SUIT

OFFICE
SPACE

143,000 SF

INDUSTRIAL
SPACE

**TWENTY-
ONE**

DOCKS
9'X10'

(ADDITIONAL
KNOCK-OUT PANELS
IN PLACE)

ONE

DRIVE-IN
DOOR
12'x14'

32'

CLEAR
CEILING
HEIGHT

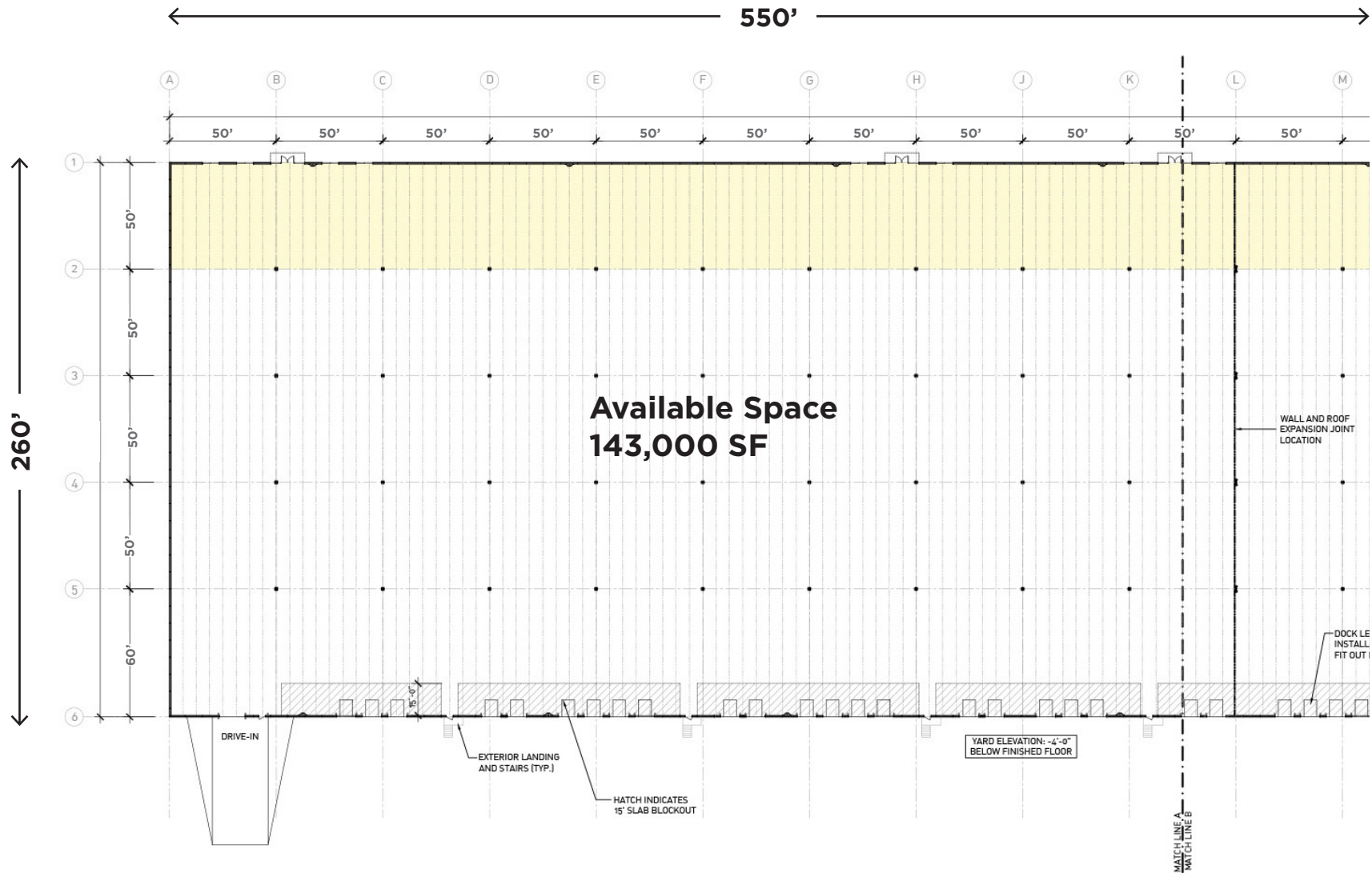
PROPERTY SPECIFICATIONS

YEAR BUILT	2023
CONSTRUCTION	Pre-Cast Insulated Concrete/Steel
SPACE DIMENSIONS	550' x 260'
COLUMN SPACING	50'x50' Typical; 50'x60' Speed Bay
CEILING HEIGHT	32'
ROOF	.045mil TPO with R-25 Insulation
SPRINKLER	ESFR
LIGHTING	LED - 2'x4' High Bay Fixtures
HEAT	Greenheck Heating & Ventilation RTU's
AIR-CONDITIONING	Rooftop/Office "To Suit"
DOCKS	Twenty-one (21) - 9'x10'
Not currently installed	(additional knock-out panels in place)
DRIVE-IN DOORS	One (1) - 12'x14'
FLOOR	Concrete (7" - 4000 PSI)
POWER	1400A / 480V / 3P (Upgradeable to 2200A)
PARKING	107 Spaces Allocated for Vacant Space
TRAILER PARKING	Thirty-seven (37) Expandable
TRUCK COURT	60' Concrete Apron + 70' Drive Aisle and 55' Trailer Stall with Dolly Pad

UTILITIES AT SITE

8 inch diameter	Sanitary Sewer
4 inch diameter	Domestic Water Line
10 inch diameter	Fire Water Line
5 PSI Gas Pipe	Gas Line (Dominion Energy)
2 - 4 inch diameter	Conduit for Electrical Service
2 - 4 inch diameter	Conduit from Street to Telephone Panel

PROPERTY FLOOR PLAN



1
81.1

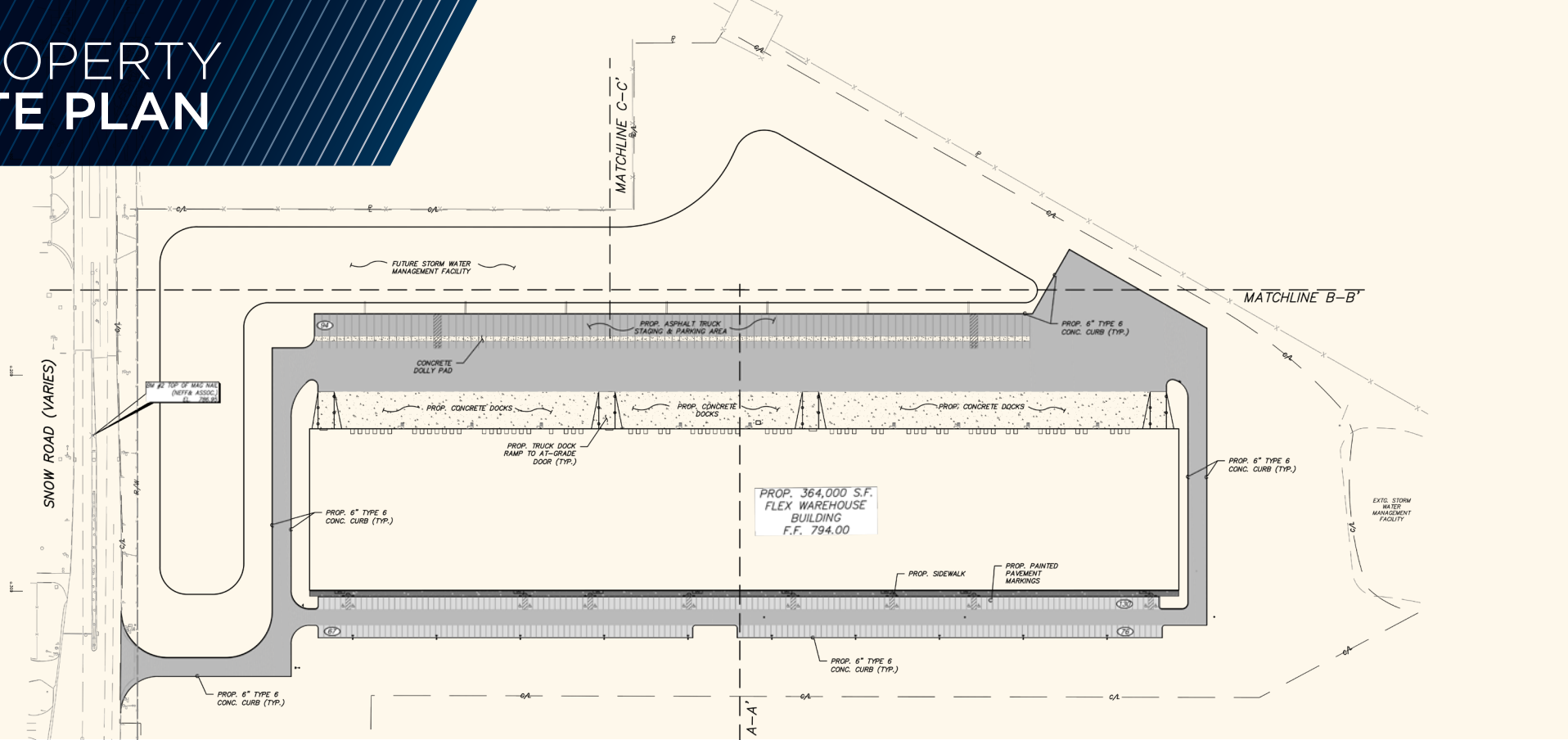
FLOOR PLAN - OVERALL

SCALE: 1/32" = 1'-0"



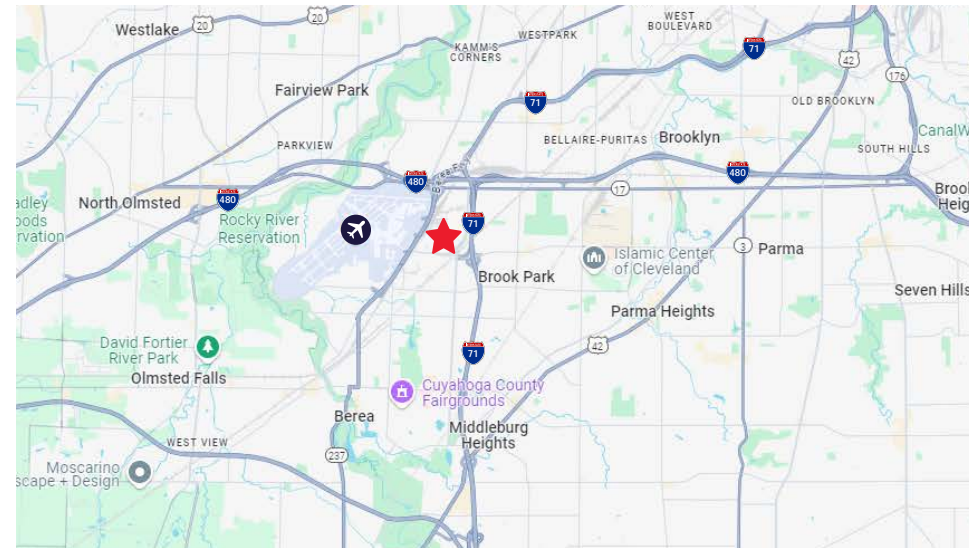
NORTH

PROPERTY SITE PLAN



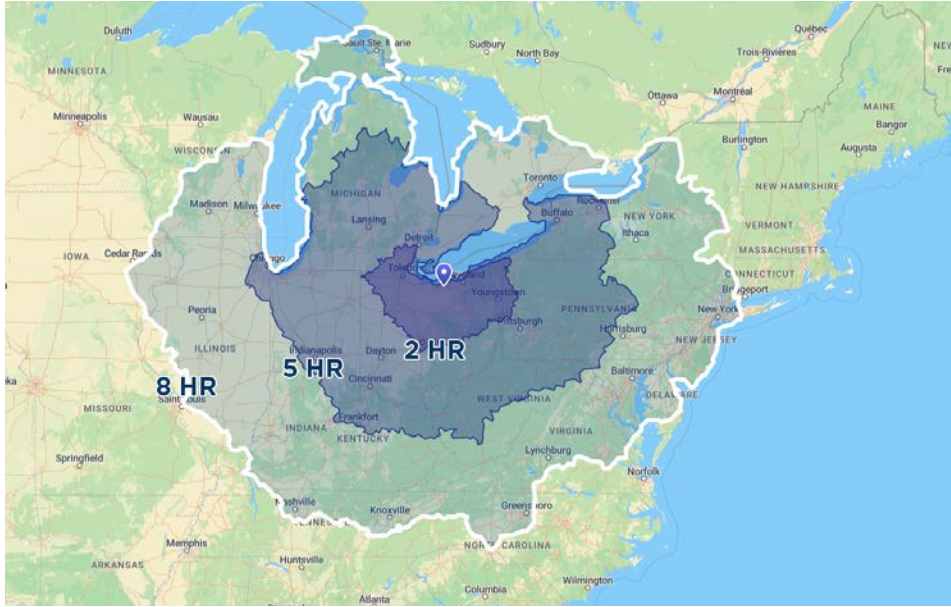
LOCATION HIGHLIGHTS

- City of Brook Park, Ohio pro-business community with low real estate taxes
- Central location provides access to skilled, quality labor force
- Excellent access to I-71, I-480 and I-80 (Ohio Turnpike)
- Close proximity to Cleveland Hopkins International Airport, NASA and the Cleveland Metroparks
- Best-in-class Cleveland based professional Ownership and Management

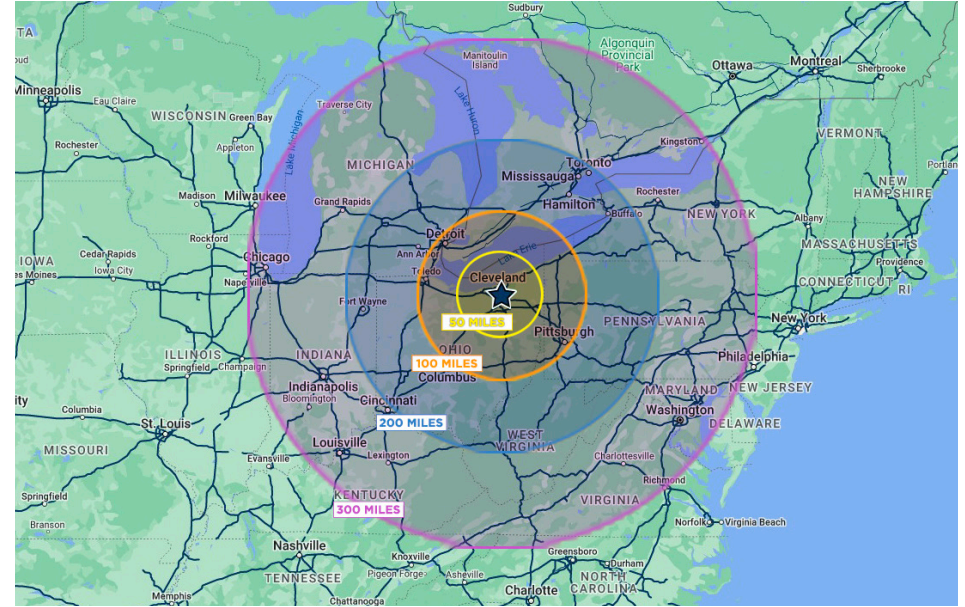


PROPERTY ABOUT

DRIVE-TIME FROM NE OHIO



RADIUS MAP



REGIONAL ACCESSIBILITY

CITY	POPULATION & METRO AREA	DISTANCE	DRIVE TIME
Cleveland	1,761,000	14 miles	16 m
Columbus	1,687,000	130 miles	1 h 51 m
Detroit	3,521,000	159 miles	2 h 23 m
Pittsburgh	1,699,000	133 miles	1 h 58 m
Cincinnati	1,764,000	236 miles	3 h 20 m
Indianapolis	1,858,000	304 miles	4 h 17 m
Louisville	1,107,000	336 miles	4 h 45 m
Chicago	8,901,000	336 miles	4 h 58 m
Toronto	6,313,000	304 miles	4 h 36 m
Washington D.C.	5,434,000	373 miles	5 h 34 m
Philadelphia	5,756,000	432 miles	6 h 16 m
New York	18,867,000	462 miles	6 h 50 m
Charlotte	2,204,000	516 miles	7 h 28 m

*Distance to Central Business District



18300 SNOW ROAD, BROOK PARK, OHIO 44142



JOSEPH V. BARN, SIOR
Principal
+1 216 525 1464
jbarna@crescorealestate.com

GEORGE J. POFOK, CCIM, SIOR
Principal
+1 216 525 1469
gpofok@crescorealestate.com

ELIOT KIJEWski, SIOR
Principal
+1 216 525 1487
ekijewski@crescorealestate.com

Independently Owned and Operated / A Member of the Cushman & Wakefield Alliance

Cushman & Wakefield Copyright 2024. No warranty or representation, express or implied, is made to the accuracy or completeness of the information contained herein, and same is submitted subject to errors, omissions, change of price, rental or other conditions, withdrawal without notice, and to any special listing conditions imposed by the property owner(s). As applicable, we make no representation as to the condition of the property (or properties) in question. A licensee at Cushman & Wakefield | CRESCO may have an interest in the client entity offering this property for sale.

6100 Rockside Woods Blvd, Suite 200
Cleveland, Ohio 44131
Main +1 216 520 1200
crescorealestate.com