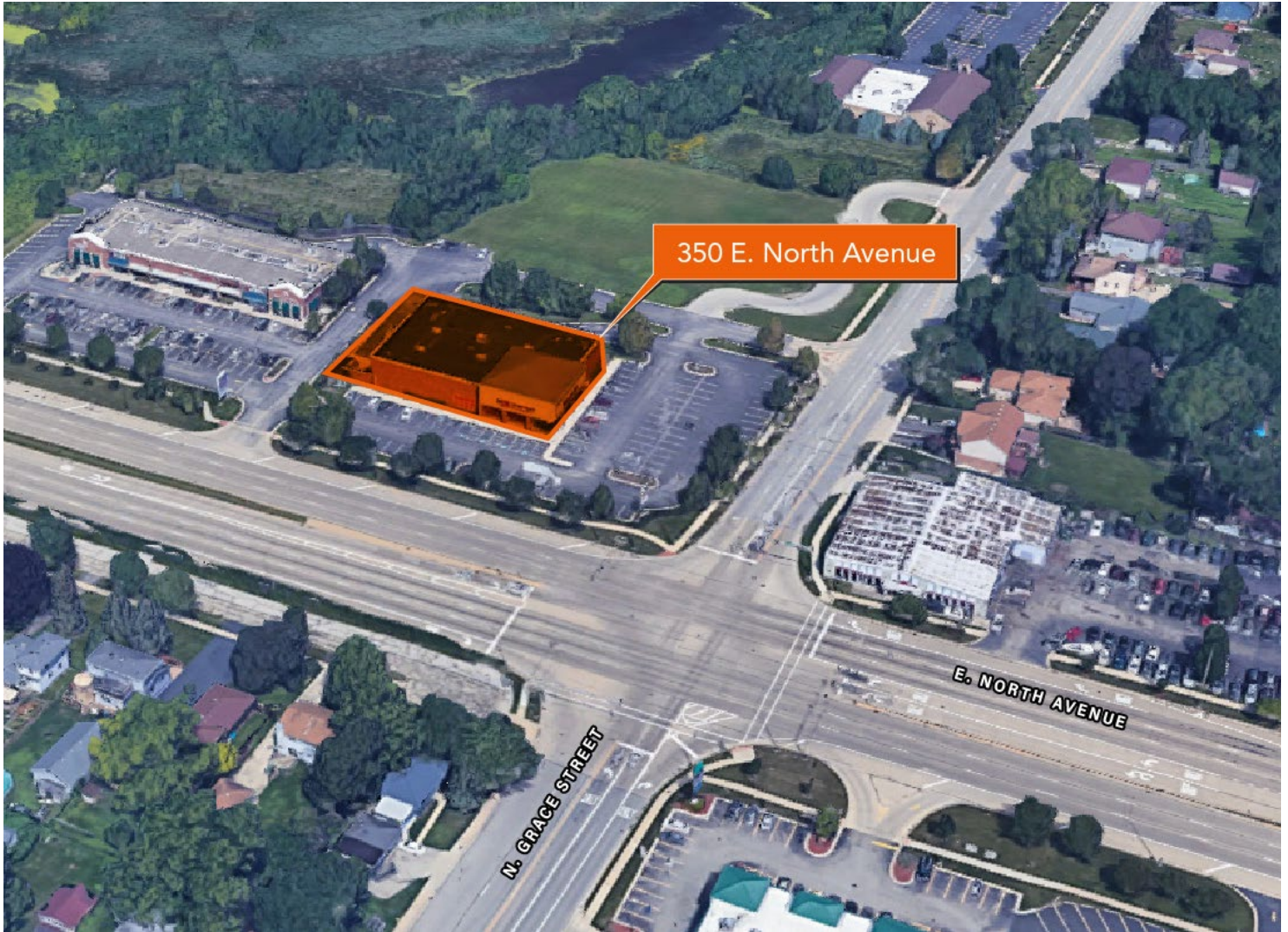


# 350 E. North Avenue

LOMBARD, IL 60148

# Sublease

RETAIL SPACE



- ▶ 13,013 SF former CVS site available for sublease
- ▶ Excellent location with excellent visibility along North Avenue at the northwest corner of North and Grace Avenues
- ▶ Highly trafficked location with plenty of parking
- ▶ Site has close proximity to I-355, I-83 and I-294
- ▶ Area tenants include Starbucks, Dunkin, Jimmy John's, Target, Aldi, Portillo's and many more

## DEMOGRAPHIC SUMMARY

	1 Mi	3 Mi	5 Mi
Estimated Population	8,616	102,210	300,176
Adj. Daytime Demographics	12,305	97,610	316,293
Estimated Households	2,972	37,067	110,891
Estimated Average Household Income	\$115,493	\$116,624	\$126,519

### DOUG RENNER

doug.renner@baumrealty.com  
312.275.3137

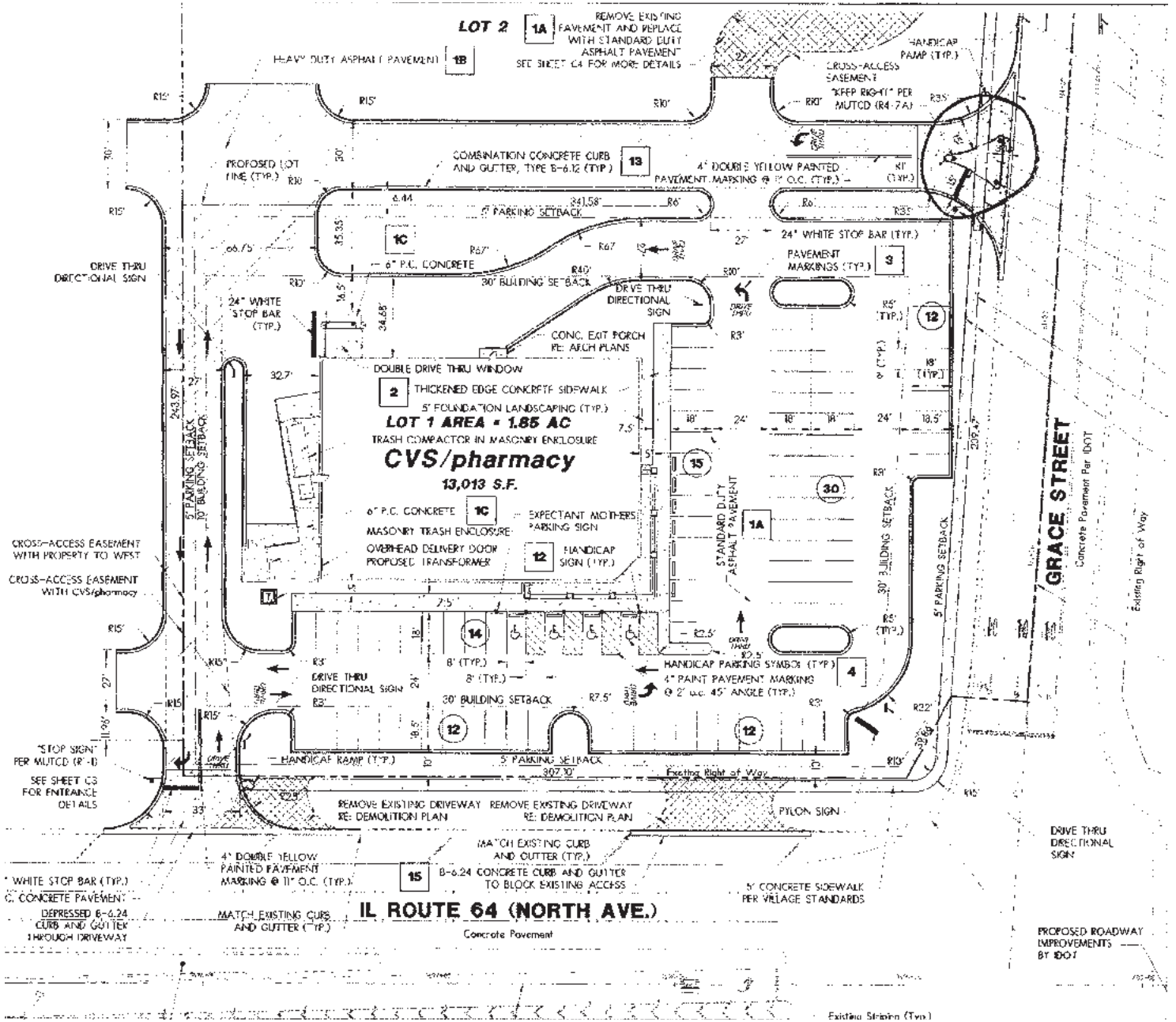
### MARK FREDERICKS

mark@baumrealty.com  
312.275.3109



© 2023 All information supplied is from sources deemed reliable and is furnished subject to errors, omissions, modifications, removal of the listing from sale or lease, and to any listing conditions, including the rates and manner of payment of commissions for particular offerings, the terms of which are available to principals or duly licensed brokers. Any square footage dimensions set forth are approximate.

SITE PLAN



**DOUG RENNER**  
doug.renner@baumrealty.com  
312.275.3137

**MARK FREDERICKS**  
mark@baumrealty.com  
312.275.3109



© 2023 All information supplied is from sources deemed reliable and is furnished subject to errors, omissions, modifications, removal of the listing from sale or lease, and to any listing conditions, including the rates and manner of payment of commissions for particular offerings, the terms of which are available to principals or duly licensed brokers. Any square footage dimensions set forth are approximate.



350 E North Ave  
Lombard, IL

