

Oxford Companies
734.665.6500
oxfordcompanies.com



Integrated
Real Estate
Services



Office Building For Lease
Atrium II
1000 Victors Way
Ann Arbor, MI 48104

52,682 SF
Price: Negotiable



Contact Karen O'Neil for
more information or to
schedule a tour.

Office: 734.665.6500
Cell: 734.323.4263
koneil@oxfordcompanies.com

Atrium II
1000 Victors Way
Ann Arbor, MI 48104



Integrated
Real Estate
Services



OFFERING SUMMARY

Lease Rate:	Negotiable
Available SF:	52,682 SF
Year Built:	1990
Zoning:	PUD

PROPERTY OVERVIEW

South Side Ann Arbor Corridor

PROPERTY HIGHLIGHTS

- Directly adjacent to the State Street exit of I-94
- Easy access to US-23
- Minutes from downtown Ann Arbor
- At the hub of the city's fastest growing commercial area
- Surrounded by other business parks and hotels
- Lots of windows and natural light
- Nicely landscaped
- Plenty of free parking adjacent to building
- Attractive brick exterior



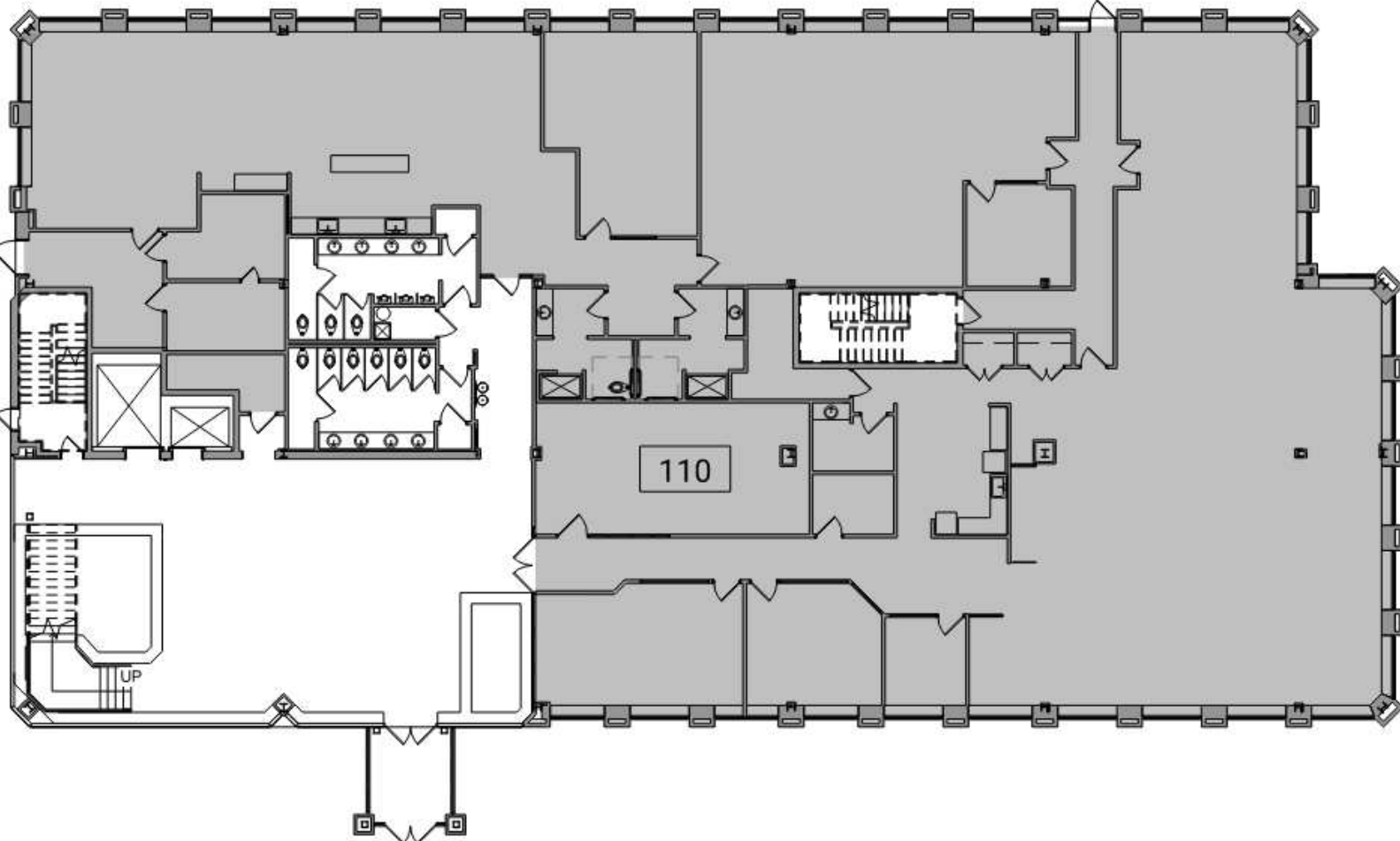
Contact Karen O'Neil for
more information or to
schedule a tour.

Office: 734.665.6500
Cell: 734.323.4263
koneil@oxfordcompanies.com

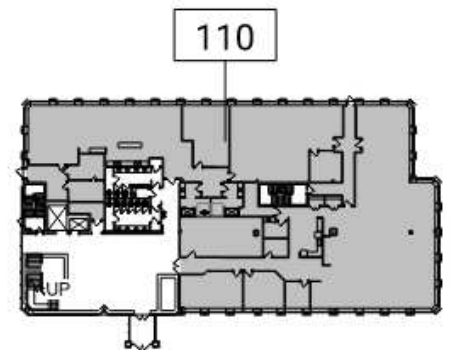
Atrium II
1000 Victors Way
Ann Arbor, MI 48104



Integrated
Real Estate
Services



2 Suite 110 - Partial Level 1 Existing Floor Plan
110 16' 32' 48' 3/64" = 1'-0"



1 Key Plan - Level 1
110 80' 160' 1" = 80'-0"



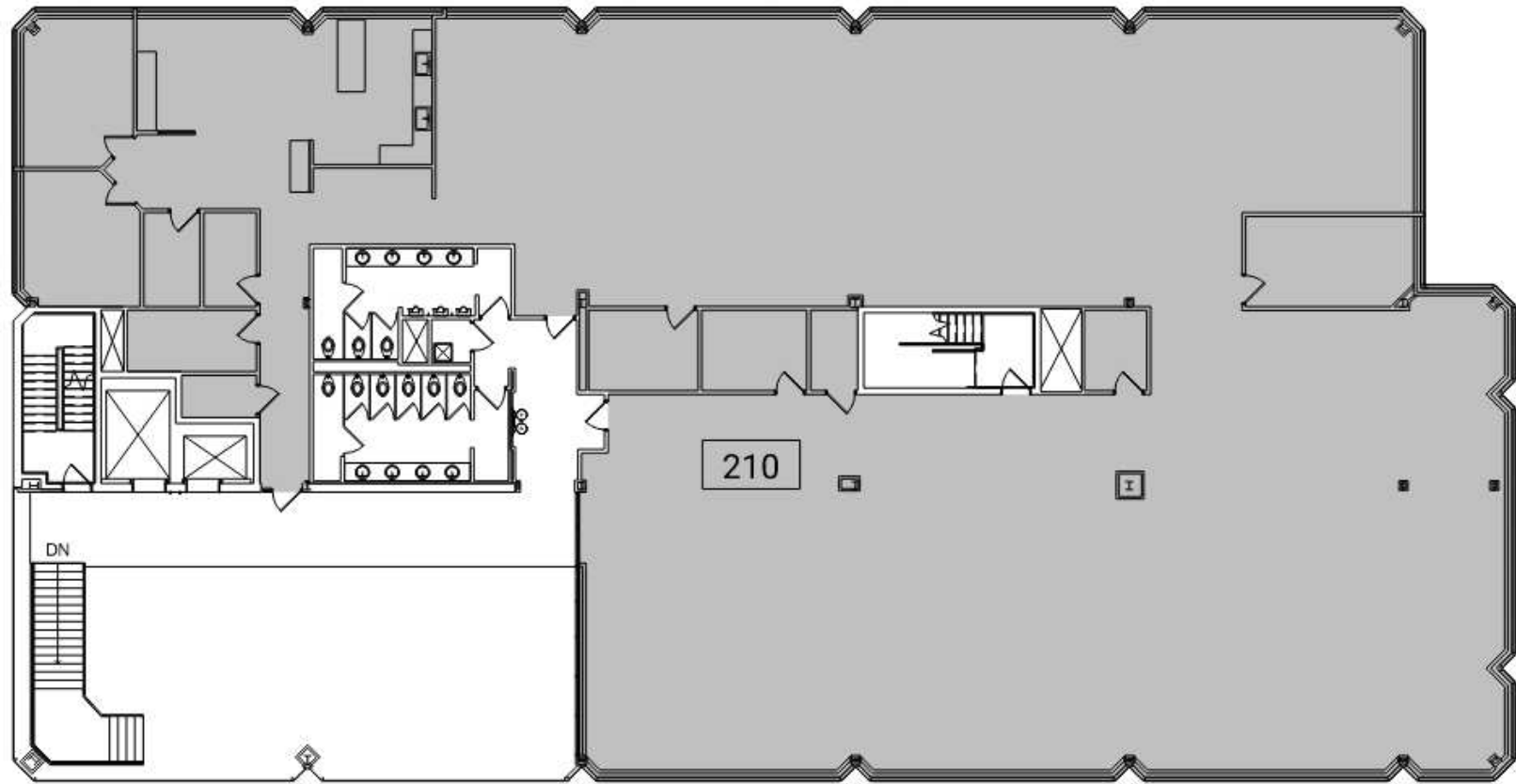
Contact Karen O'Neil for more information or to schedule a tour.


Office: 734.665.6500
Cell: 734.323.4263
koneil@oxfordcompanies.com

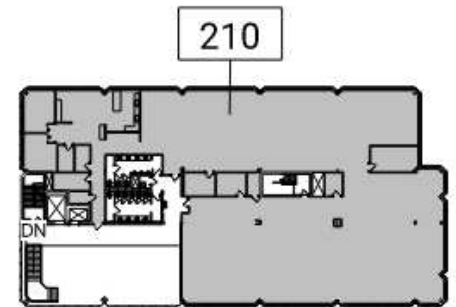
Atrium II
1000 Victors Way
Ann Arbor, MI 48104



Integrated
Real Estate
Services



 **2** Suite 210 - Partial Level 2 Existing Floor Plan
16' 32' 48' 3/64" = 1'-0"



 **1** Key Plan - Level 2
80' 160' 1" = 80'-0"



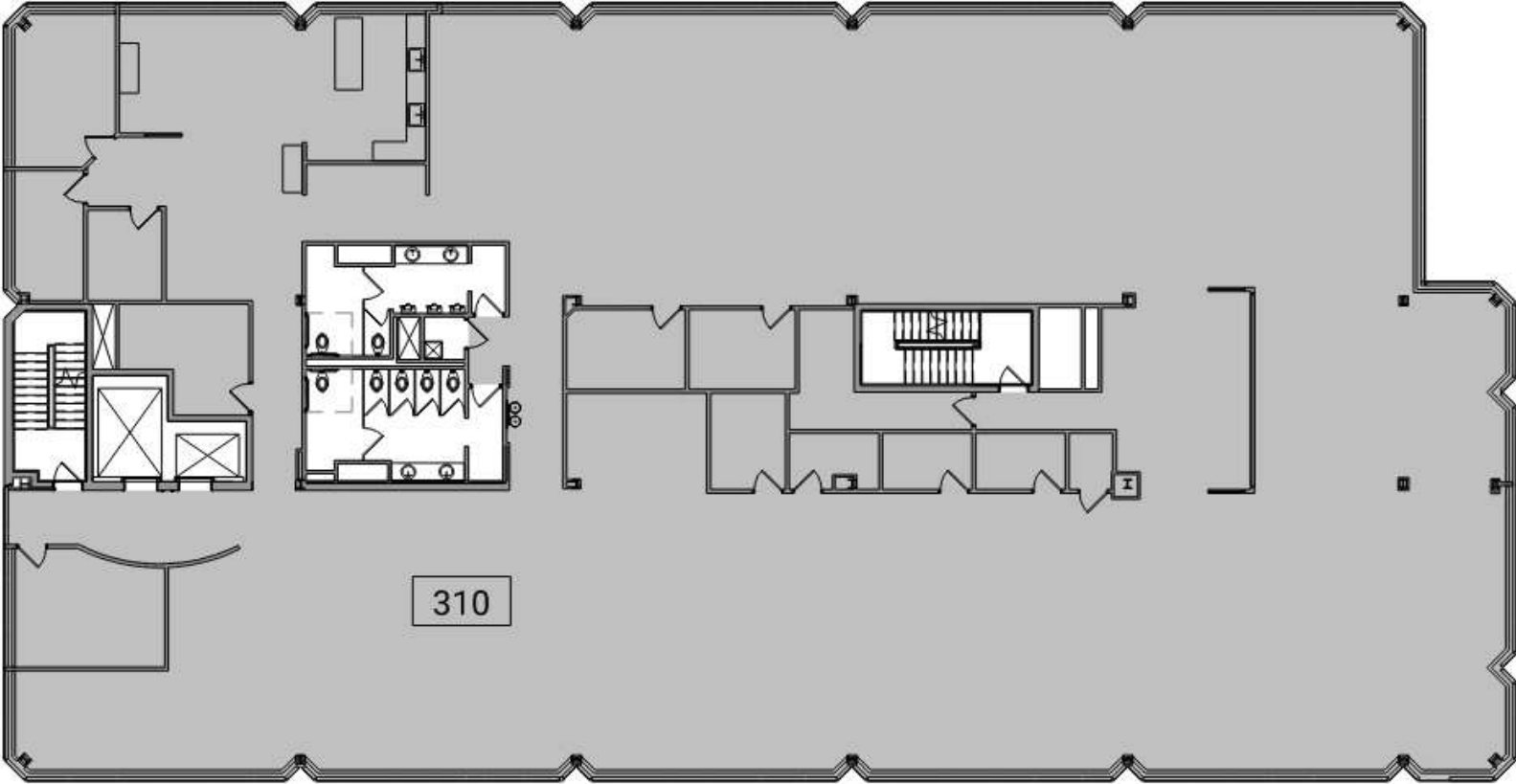
Contact Karen O'Neil for more information or to schedule a tour.

Office: 734.665.6500
Cell: 734.323.4263
koneil@oxfordcompanies.com

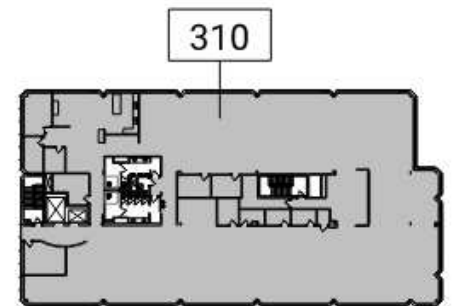
Atrium II
1000 Victors Way
Ann Arbor, MI 48104



Integrated
Real Estate
Services



 **2** Suite 310 - Partial Level 3 Existing Floor Plan
3/64" = 1'-0"
16' 32' 48'



 **1** Key Plan - Level 3
1" = 80'-0"
80' 160'



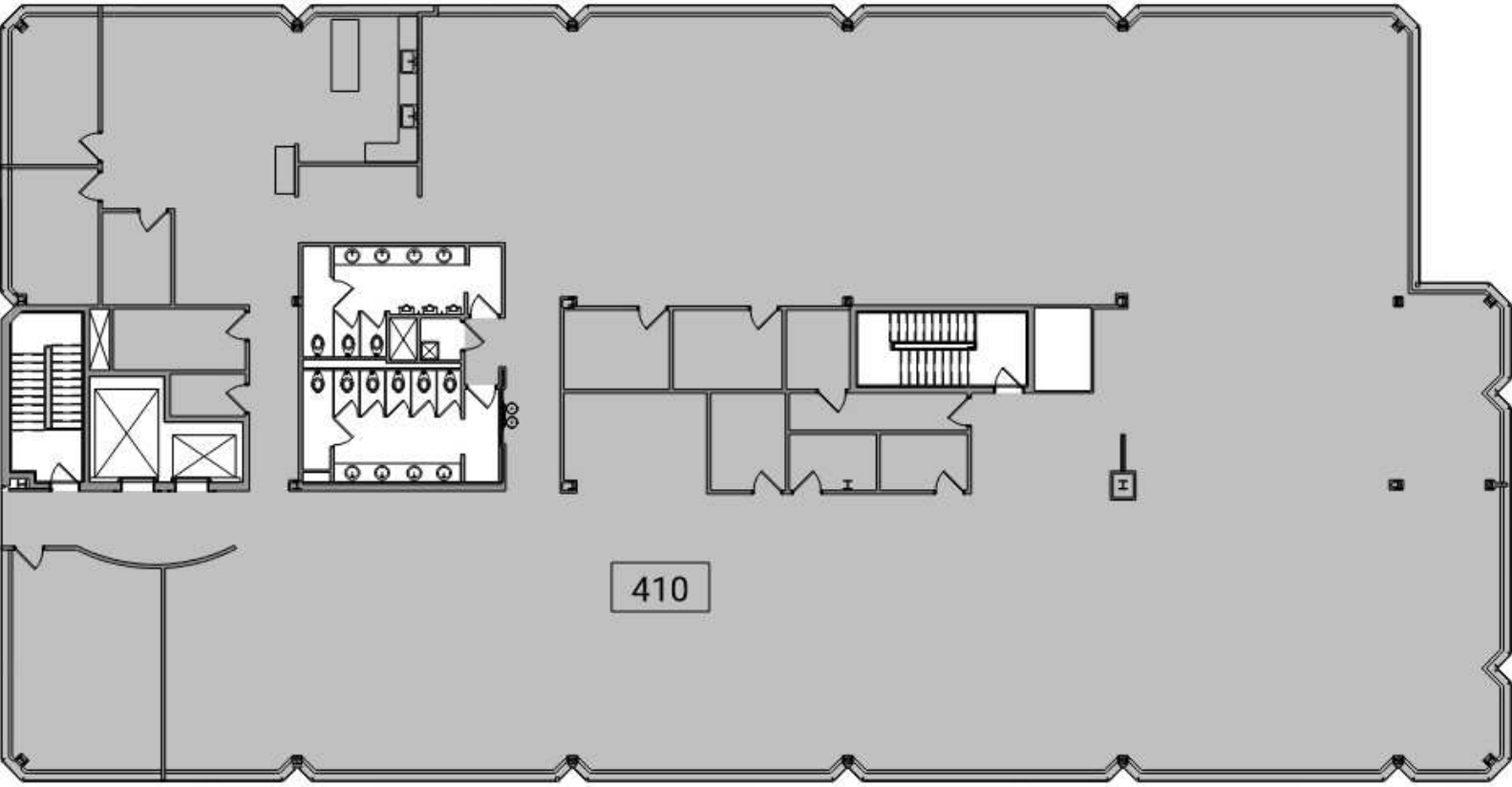
Contact Karen O'Neil for more information or to schedule a tour.

Office: 734.665.6500
Cell: 734.323.4263
koneil@oxfordcompanies.com

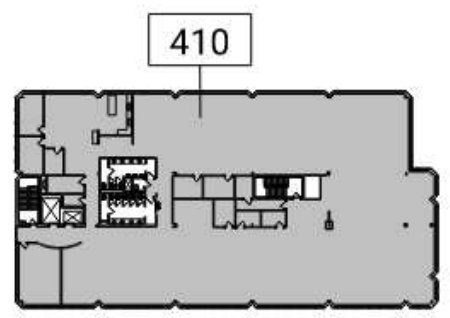
Atrium II
1000 Victors Way
Ann Arbor, MI 48104



Integrated
Real Estate
Services



2 Suite 410 - Partial Level 4 Existing Floor Plan
16' 32' 48' 3/64" = 1'-0"



1 Key Plan - Level 4
80' 160' 1" = 80'-0"



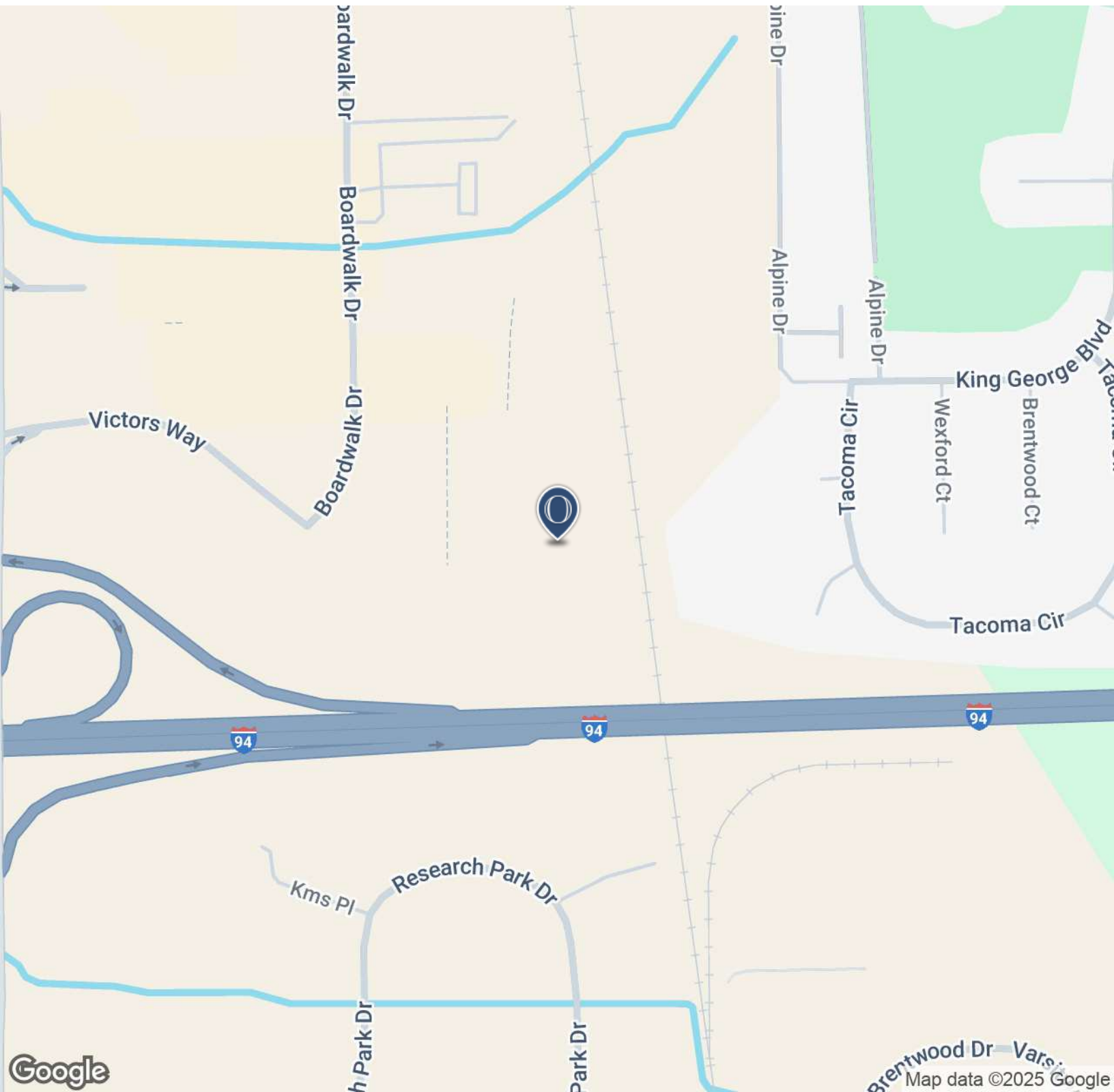
Contact Karen O'Neil for more information or to schedule a tour.

Office: 734.665.6500
Cell: 734.323.4263
koneil@oxfordcompanies.com

Atrium II
1000 Victors Way
Ann Arbor, MI 48104



Integrated
Real Estate
Services



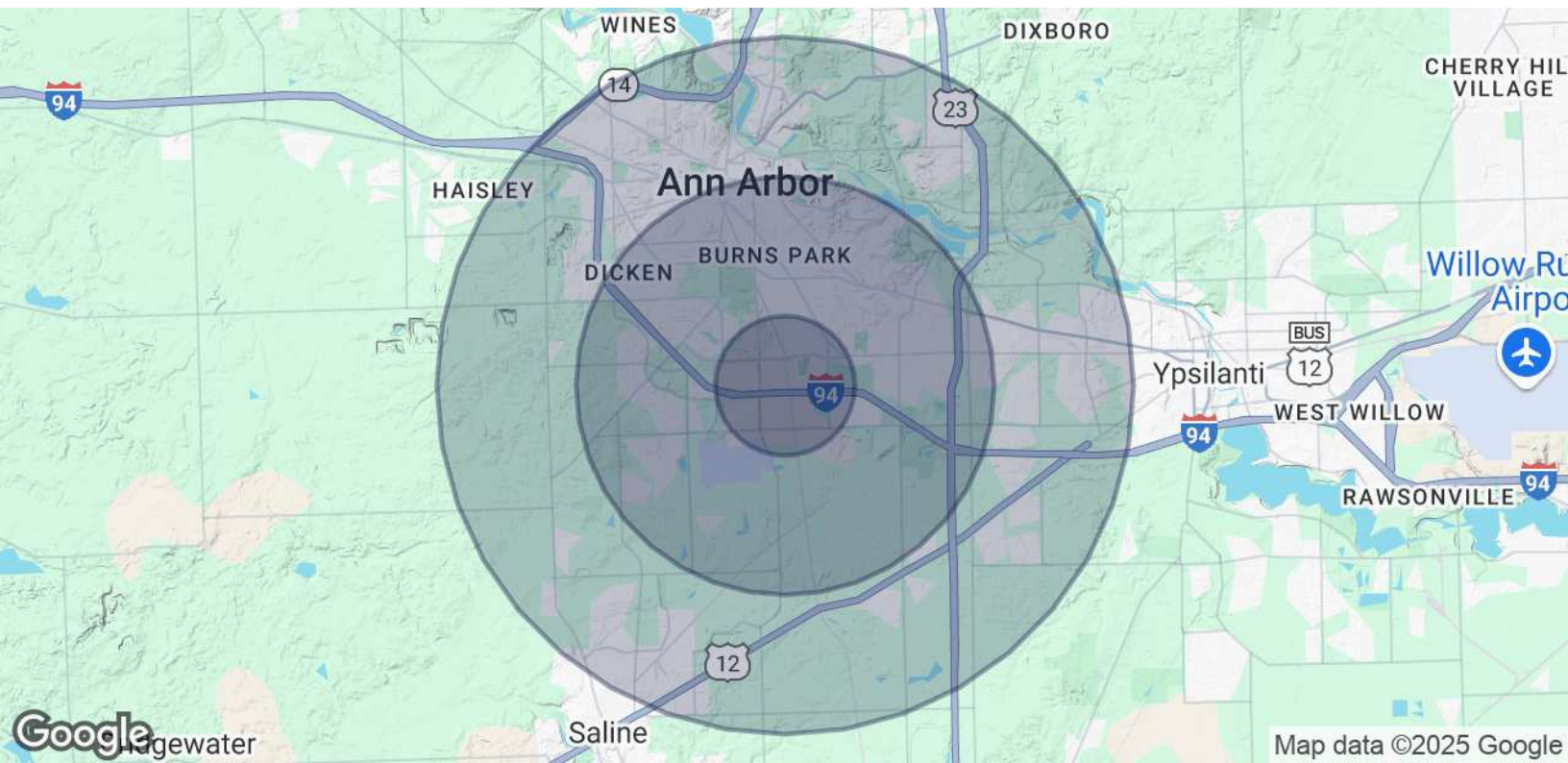
Contact Karen O'Neil for
more information or to
schedule a tour.

Office: 734.665.6500
Cell: 734.323.4263
koneil@oxfordcompanies.com

Atrium II
 1000 Victors Way
 Ann Arbor, MI 48104



Integrated
 Real Estate
 Services



POPULATION	1 MILE	3 MILES	5 MILES
Total Population	9,344	84,308	187,533
Average Age	32.0	31.4	32.6
Average Age (Male)	32.2	31.3	32.3
Average Age (Female)	31.8	31.4	32.9
HOUSEHOLDS & INCOME	1 MILE	3 MILES	5 MILES
Total Households	4,354	32,554	72,910
# of Persons per HH	2.1	2.6	2.6
Average HH Income	\$58,082	\$77,873	\$78,477
Average House Value	\$127,100	\$337,492	\$316,073

2020 American Community Survey (ACS)



Contact Karen O'Neil for more information or to schedule a tour.

Office: 734.665.6500
 Cell: 734.323.4263
koneil@oxfordcompanies.com