

PRIME CORNER SUB LEASE RETAIL SPACE AVAILABLE

600 W. 178TH ST. – WASHINGTON HEIGHTS, 10033

PROPERTY INFORMATION

SIZE: 2,469 SF

ASKING RENT: UPON REQUEST

POSSESSION: IMMEDIATE

PROPERTY HIGHLIGHTS:

- ALL USES CONSIDERED
- BUSIEST INTERSECTION IN WASHINGTON HEIGHTS
- ACROSS THE STREET FROM
1 TRAIN (181ST STREET STATION)

AREA TENANTS



DEMOGRAPHICS	.25 MILE	.5 MILE	1 MILE
POPULATION	23,825	75,239	119,710
HOUSEHOLDS	7,762	27,207	43,291
AVG. HOUSEHOLD INCOME	\$65,062	\$81,494	\$71,705

CONTACT EXCLUSIVE BROKERS FOR DETAILS

JACK BASSAL

LIC. ASSOCIATE REAL ESTATE BROKER

jbb@schuckmanrealty.com

ARI MALUL

LIC. ASSOCIATE REAL ESTATE BROKER

ari@schuckmanrealty.com

516-496-8888 ext.777

schuckmanrealty.com

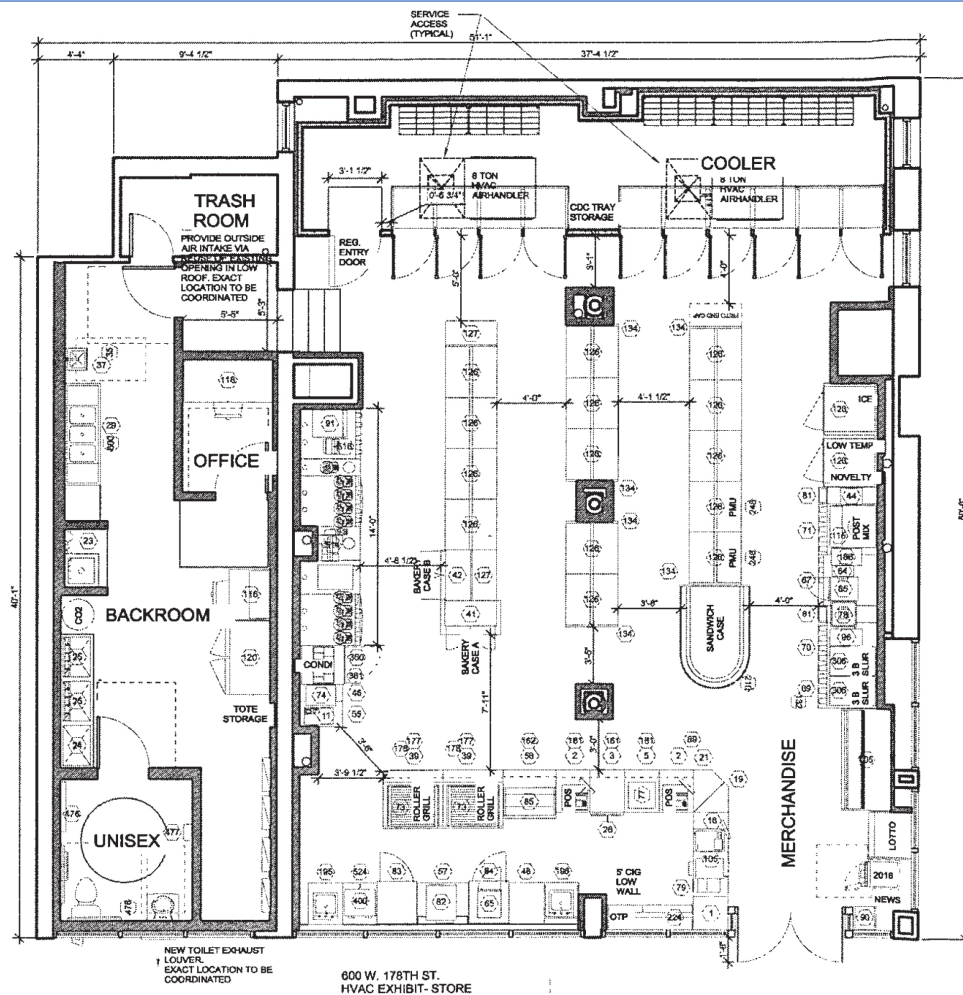


This information contained herein has been obtained from sources believed reliable. However, we have not verified it and make no guarantee, warranty or representation about it. It is submitted subject to the possibility of errors, omissions, change of price, rental and other conditions, prior sale, lease or financing, or withdrawal without notice. It is your responsibility to independently confirm its accuracy and completeness. Any projections, opinions, assumptions, or estimates used are for example only and they may not represent the current or future suitability, availability or performance of the property. You and your tax and legal advisors should conduct your own investigation of any property and transaction. We may or may not have an exclusive or nonexclusive contractual relationship with a tenant or the owner/landlord of a particular property; and if we do, such relationship shall be fully disclosed to you on a timely basis. Third-party trademarks, service marks, graphics, and logos belong to third parties. You are not granted any right or license with respect to Schuckman Realty Inc.'s trademarks service marks, graphics, and logos or the trademarks service marks, graphics, and logos of any third party. Kenneth Schuckman is Broker of record of Schuckman Realty Inc.

PRIME CORNER SUB LEASE RETAIL SPACE AVAILABLE

600 W. 178TH ST. – WASHINGTON HEIGHTS, 10033

FLOOR PLAN



CONTACT EXCLUSIVE BROKERS FOR DETAILS

JACK BASSAL

LIC. ASSOCIATE REAL ESTATE BROKER

jb@schuckmanrealty.com

ARI MALUL

LIC. ASSOCIATE REAL ESTATE BROKER

ari@schuckmanrealty.com

516-496-8888 ext.777

schuckmanrealty.com

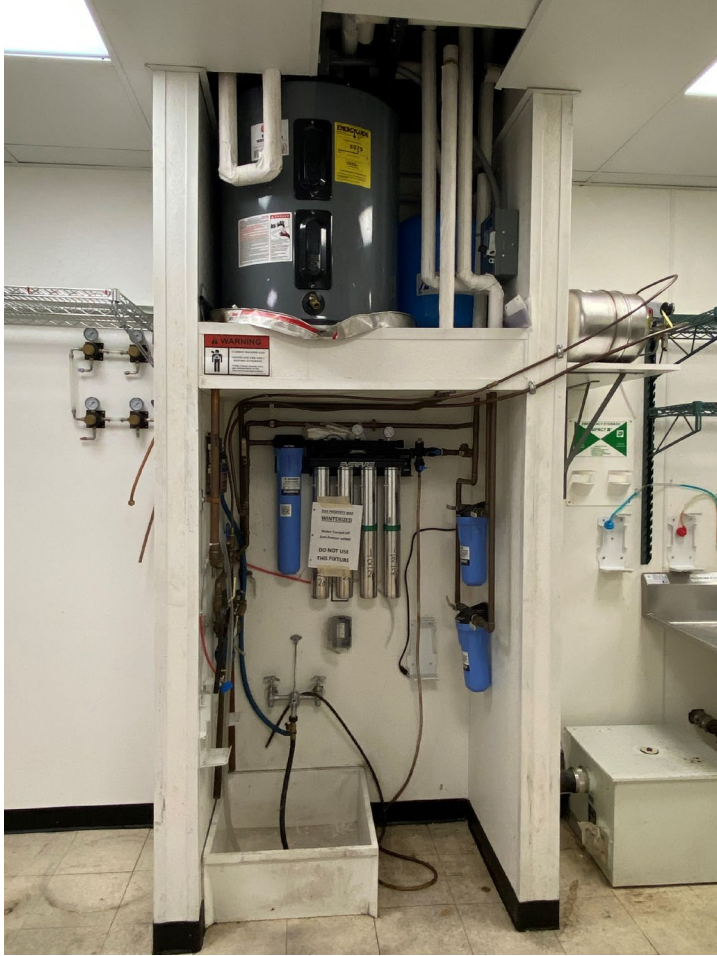
SCHUCKMAN[®]
REALTY INC.

This information contained herein has been obtained from sources believed reliable. However, we have not verified it and make no guarantee, warranty or representation about it. It is submitted subject to the possibility of errors, omissions, change of price, rental and other conditions, prior sale, lease or financing, or withdrawal without notice. It is your responsibility to independently confirm its accuracy and completeness. Any projections, opinions, assumptions, or estimates used are for example only and they may not represent the current or future suitability, availability or performance of the property. You and your tax and legal advisors should conduct your own investigation of any property and transaction. We may or may not have an exclusive or nonexclusive contractual relationship with a tenant or the owner/landlord of a particular property; and if we do, such relationship shall be fully disclosed to you on a timely basis. Third-party trademarks, service marks, graphics, and logos belong to third parties. You are not granted any right or license with respect to Schuckman Realty Inc.'s trademarks service marks, graphics, and logos or the trademarks service marks, graphics, and logos of any third party. Kenneth Schuckman is Broker of record of Schuckman Realty Inc.

PRIME CORNER SUB LEASE RETAIL SPACE AVAILABLE

600 W. 178TH ST. – WASHINGTON HEIGHTS, 10033

INTERIOR PHOTOS



CONTACT EXCLUSIVE BROKERS FOR DETAILS

JACK BASSAL

LIC. ASSOCIATE REAL ESTATE BROKER

jb@schuckmanrealty.com

ARI MALUL

LIC. ASSOCIATE REAL ESTATE BROKER

ari@schuckmanrealty.com

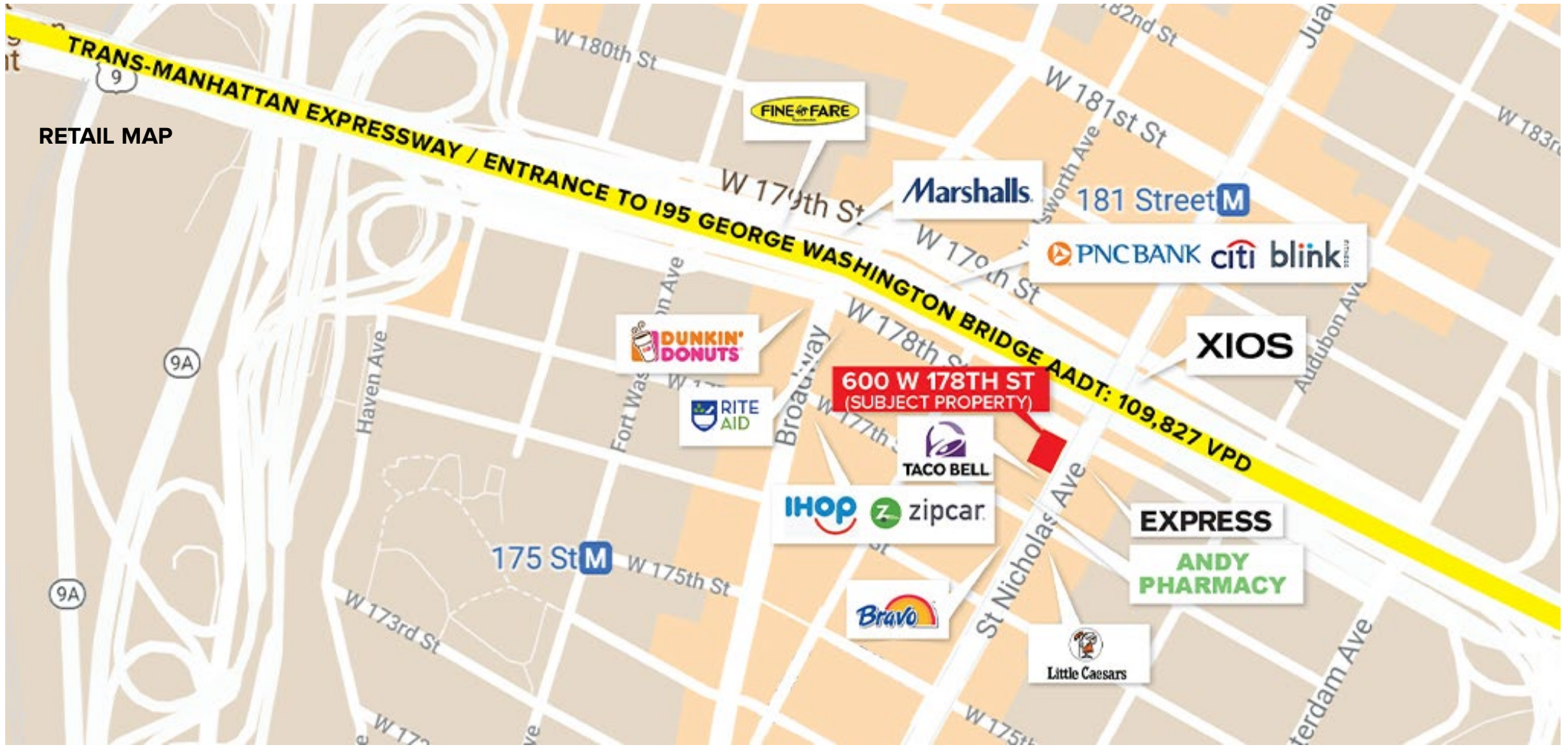
516-496-8888 ext.777

schuckmanrealty.com

SCHUCKMAN[®]
REALTY INC.

This information contained herein has been obtained from sources believed reliable. However, we have not verified it and make no guarantee, warranty or representation about it. It is submitted subject to the possibility of errors, omissions, change of price, rental and other conditions, prior sale, lease or financing, or withdrawal without notice. It is your responsibility to independently confirm its accuracy and completeness. Any projections, opinions, assumptions, or estimates used are for example only and they may not represent the current or future suitability, availability or performance of the property. You and your tax and legal advisors should conduct your own investigation of any property and transaction. We may or may not have an exclusive or nonexclusive contractual relationship with a tenant or the owner/landlord of a particular property; and if we do, such relationship shall be fully disclosed to you on a timely basis. Third-party trademarks, service marks, graphics, and logos belong to third parties. You are not granted any right or license with respect to Schuckman Realty Inc.'s trademarks service marks, graphics, and logos or the trademarks service marks, graphics, and logos of any third party. Kenneth Schuckman is Broker of record of Schuckman Realty Inc.

PRIME CORNER SUB LEASE RETAIL SPACE AVAILABLE
600 W. 178TH ST. – WASHINGTON HEIGHTS, 10033



CONTACT EXCLUSIVE BROKERS FOR DETAILS

JACK BASSAL

LIC. ASSOCIATE REAL ESTATE BROKER

jb@schuckmanrealty.com

ARI MALUL

LIC. ASSOCIATE REAL ESTATE BROKER

ari@schuckmanrealty.com

516-496-8888 ext.777

schuckmanrealty.com

SCHUCKMAN®
REALTY INC.

This information contained herein has been obtained from sources believed reliable. However, we have not verified it and make no guarantee, warranty or representation about it. It is submitted subject to the possibility of errors, omissions, change of price, rental and other conditions, prior sale, lease or financing, or withdrawal without notice. It is your responsibility to independently confirm its accuracy and completeness. Any projections, opinions, assumptions, or estimates used are for example only and they may not represent the current or future suitability, availability or performance of the property. You and your tax and legal advisors should conduct your own investigation of any property and transaction. We may or may not have an exclusive or nonexclusive contractual relationship with a tenant or the owner/landlord of a particular property; and if we do, such relationship shall be fully disclosed to you on a timely basis. Third-party trademarks, service marks, graphics, and logos belong to third parties. You are not granted any right or license with respect to Schuckman Realty Inc.'s trademarks service marks, graphics, and logos or the trademarks service marks, graphics, and logos of any third party. Kenneth Schuckman is Broker of record of Schuckman Realty Inc.