

395-447 ELMWOOD DRIVE  
TROY, MICHIGAN

INDUSTRIAL SUBLEASE  
2,320 Square Feet Available



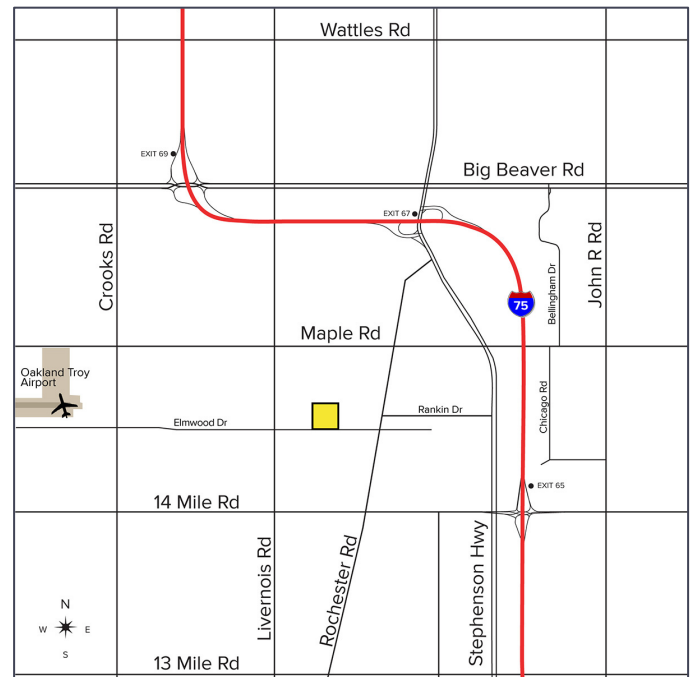
**SIGNATURE  
ASSOCIATES**  
KNOW SIGNATURE | KNOW RESULTS

## MARQUE TROY CORPORATE CENTER



### PROPERTY FEATURES

- 2,320 square feet available
- 320 square feet of office
- (1) 12 x 14 grade level door
- Each unit has been recently renovated
- Centrally located near I-75 between 14 Mile and Rochester Road exits
- Variety of uses possible
- Lease Rate: \$10.00/sq. ft. Gross



For more information, please contact:

**KRIS PAWLOWSKI**  
(248) 359 3801  
kpawlowski@signatureassociates.com

**JOHN DROZE**  
(248) 948 4191  
jdroze@signatureassociates.com

**SIGNATURE ASSOCIATES**  
One Towne Square, Suite 1200  
Southfield, MI 48076  
www.signatureassociates.com

# 395 – 447 Elmwood Drive – Troy, Michigan

## Industrial Sublease

2,320  
Square Feet  
AVAILABLE

### Site Plan



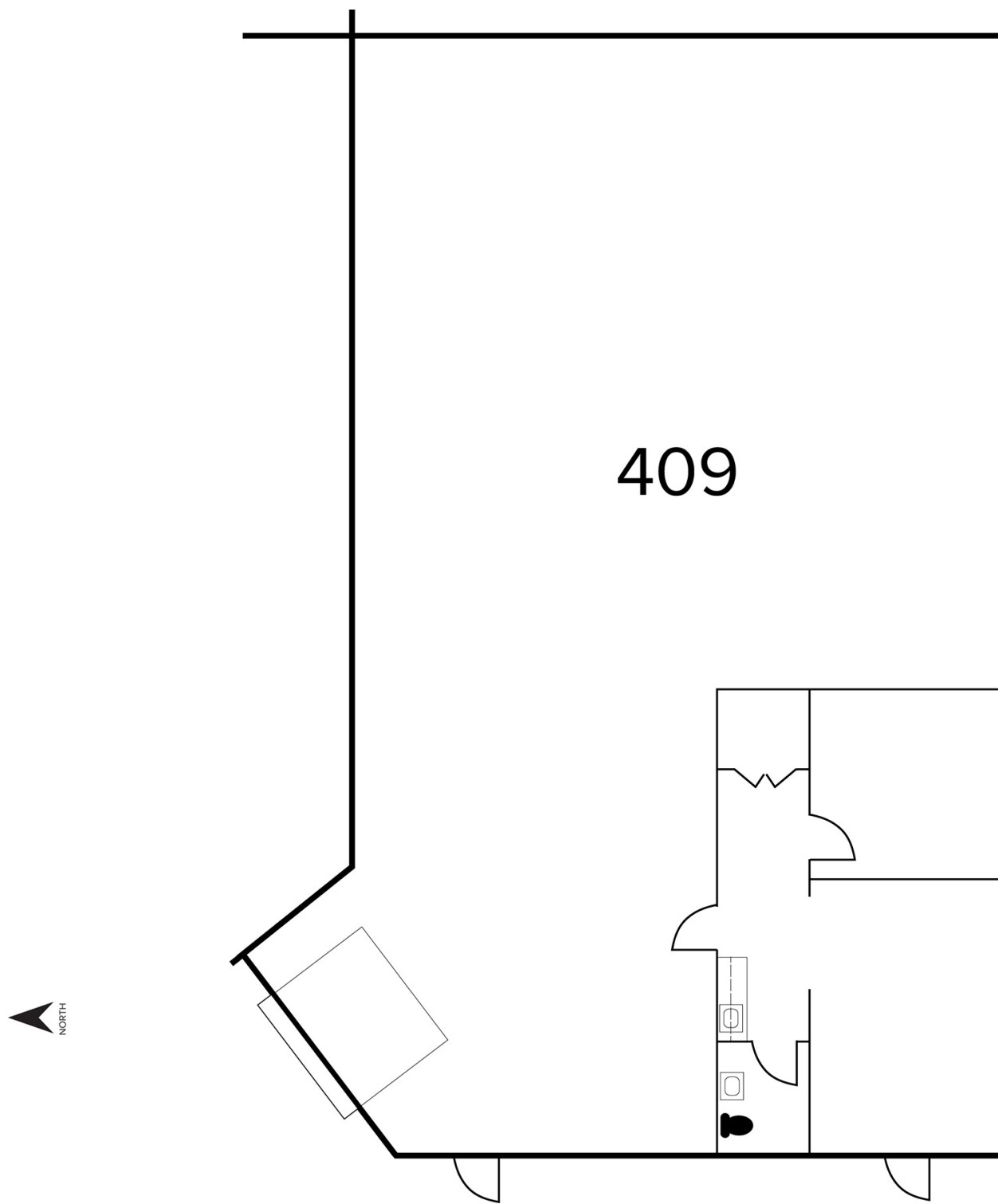
For more information, please contact:

**KRIS PAWLOWSKI**  
(248) 359 3801  
kpawlowski@signatureassociates.com

**JOHN DROZE**  
(248) 948 4191  
jdroze@signatureassociates.com

**SIGNATURE ASSOCIATES**  
One Towne Square, Suite 1200  
Southfield, MI 48076  
www.signatureassociates.com

Floor Plan



For more information, please contact:

**KRIS PAWLOWSKI**  
(248) 359 3801  
kpawlowski@signatureassociates.com

**JOHN DROZE**  
(248) 948 4191  
jdroze@signatureassociates.com

**SIGNATURE ASSOCIATES**  
One Towne Square, Suite 1200  
Southfield, MI 48076  
www.signatureassociates.com



# 395 – 447 Elmwood Drive – Troy, Michigan

## Industrial Sublease

2,320  
Square Feet  
AVAILABLE

### Interior Photos



For more information, please contact:

**KRIS PAWLOWSKI**  
(248) 359 3801  
kpawlowski@signatureassociates.com

**JOHN DROZE**  
(248) 948 4191  
jdroze@signatureassociates.com

**SIGNATURE ASSOCIATES**  
One Towne Square, Suite 1200  
Southfield, MI 48076  
www.signatureassociates.com



# 395 – 447 Elmwood Drive – Troy, Michigan

## Industrial Sublease

2,320  
Square Feet  
AVAILABLE

Aerial



For more information, please contact:

**KRIS PAWLOWSKI**  
(248) 359 3801  
kpawlowski@signatureassociates.com

**JOHN DROZE**  
(248) 948 4191  
jdroze@signatureassociates.com

**SIGNATURE ASSOCIATES**  
One Towne Square, Suite 1200  
Southfield, MI 48076  
www.signatureassociates.com