

IR DECL. SEE
DOC. # 1822979

1822978

SHEBOYGAN COUNTY, WI
RECORDED ON
03/30/2007 09:46AM

ELLEN R. SCHLEICHER
REGISTER OF DEEDS

RECORDING FEE:
PLAT FEE: 50.00

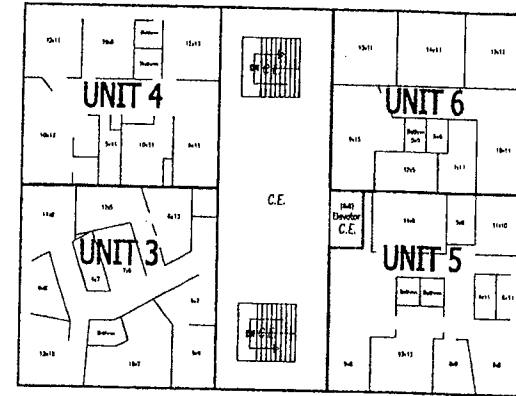
STAFF ID 2
TRANS # 96117

Professional Plaza Condominium

Legal Description:

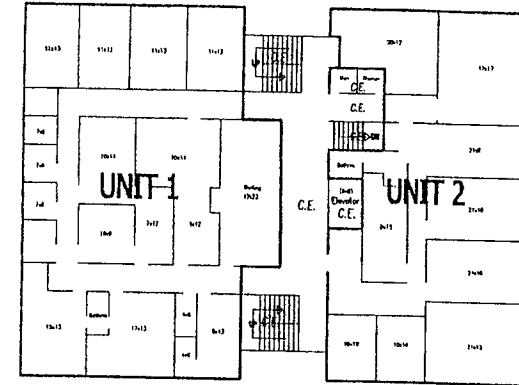
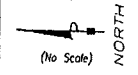
LOTS 7, 8, AND 9, BLOCK 29, ORIGINAL PLAT, CITY OF SHEBOYGAN,
SHEBOYGAN COUNTY, WISCONSIN.
Subject to easements and restrictions.

Vol. 14 p. 242



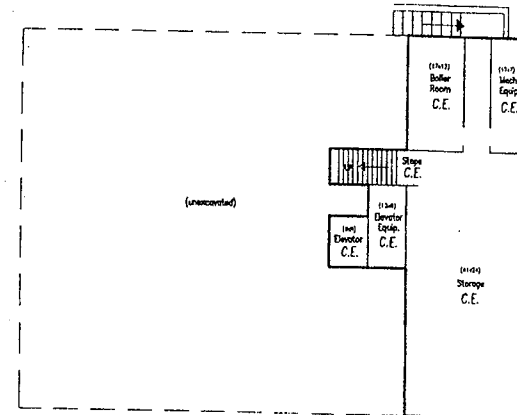
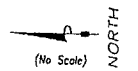
SECOND FLOOR

UNIT NUMBER	AREA (SQ.FT.)
3	1276
4	1127
5	1213
6	1127

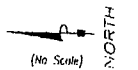


FIRST FLOOR

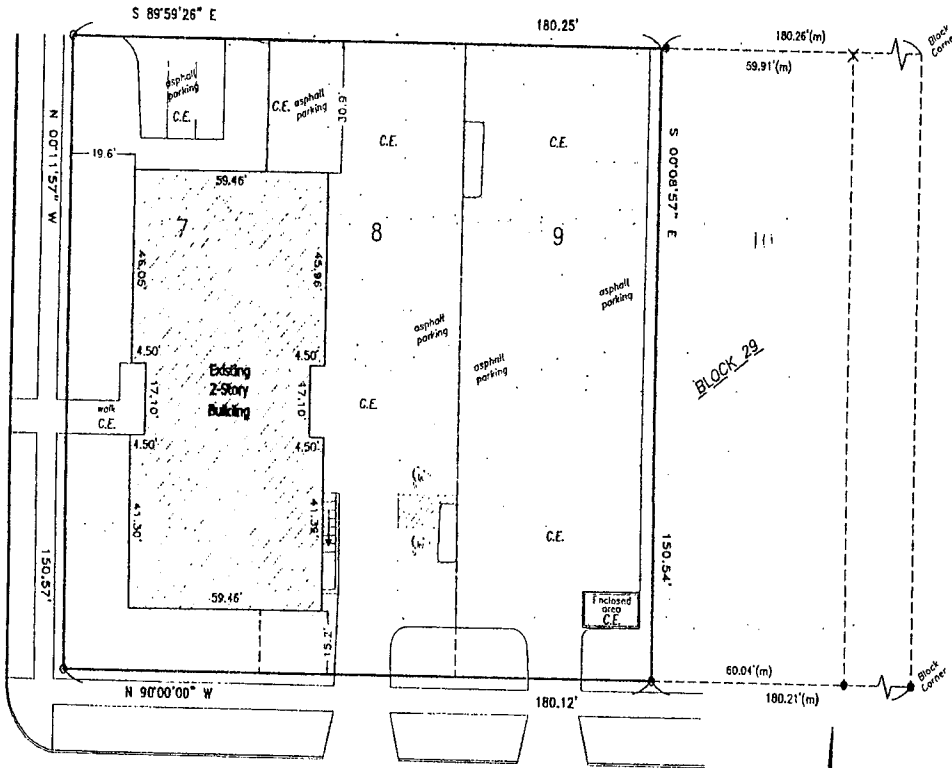
UNIT NUMBER	AREA (SQ.FT.)
1	2857
2	2237



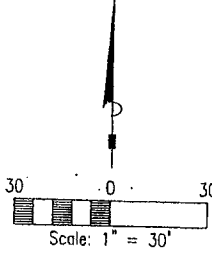
BASEMENT LEVEL



NORTH 8TH STREET



HURON AVENUE



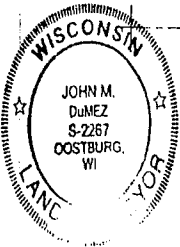
Legend

- = 1" iron pipe found
- × = Chiseled "x" found
- = 1"x18" iron pipe set
- (m) = measured distance
- L.C.E. = Limited Common Element
- C.E. = Common Element

Surveyor's Certificate

I hereby certify that this condominium plat, and the survey on which it is based, are correct to the best of my knowledge and belief. I further certify that the identification and location of each condominium unit and the condominium common elements can be determined from this plat.

Signed John M. DuMez Date 3/27/07
John M. DuMez - R.L.S. S-2267



Compsite
Surveying & Mapping
Oostburg, Wisconsin
(920) 564-6812