



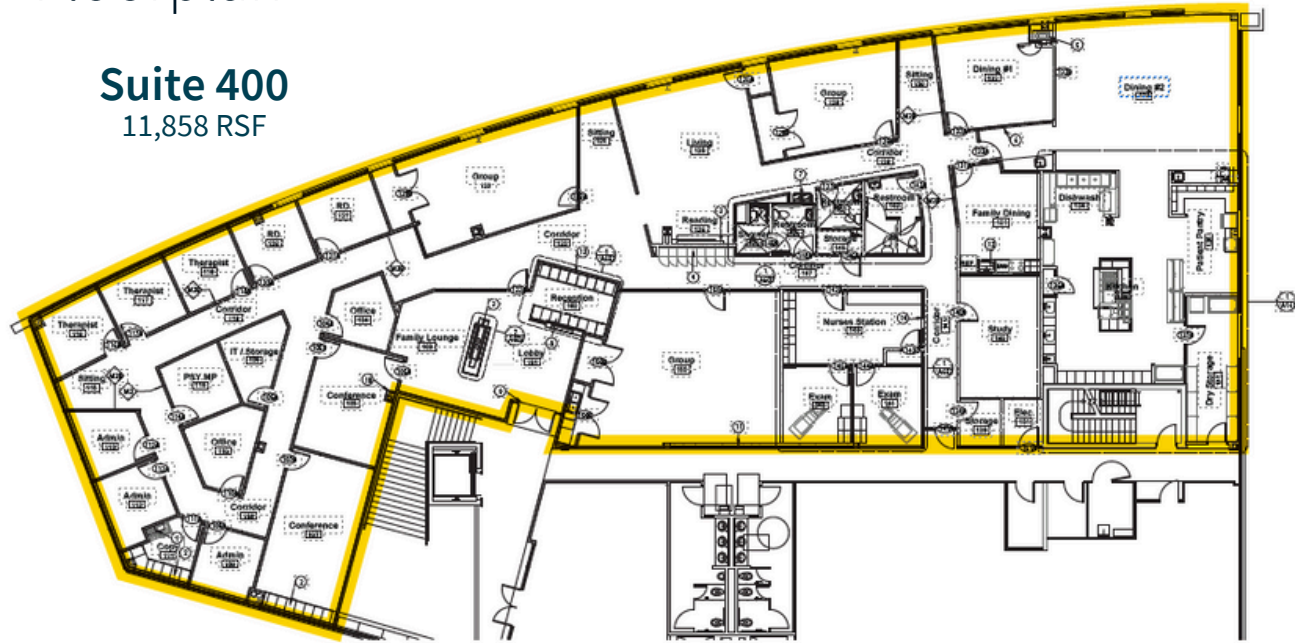
# For sublease

6627 W Broad Street, Richmond, VA



# Floorplan

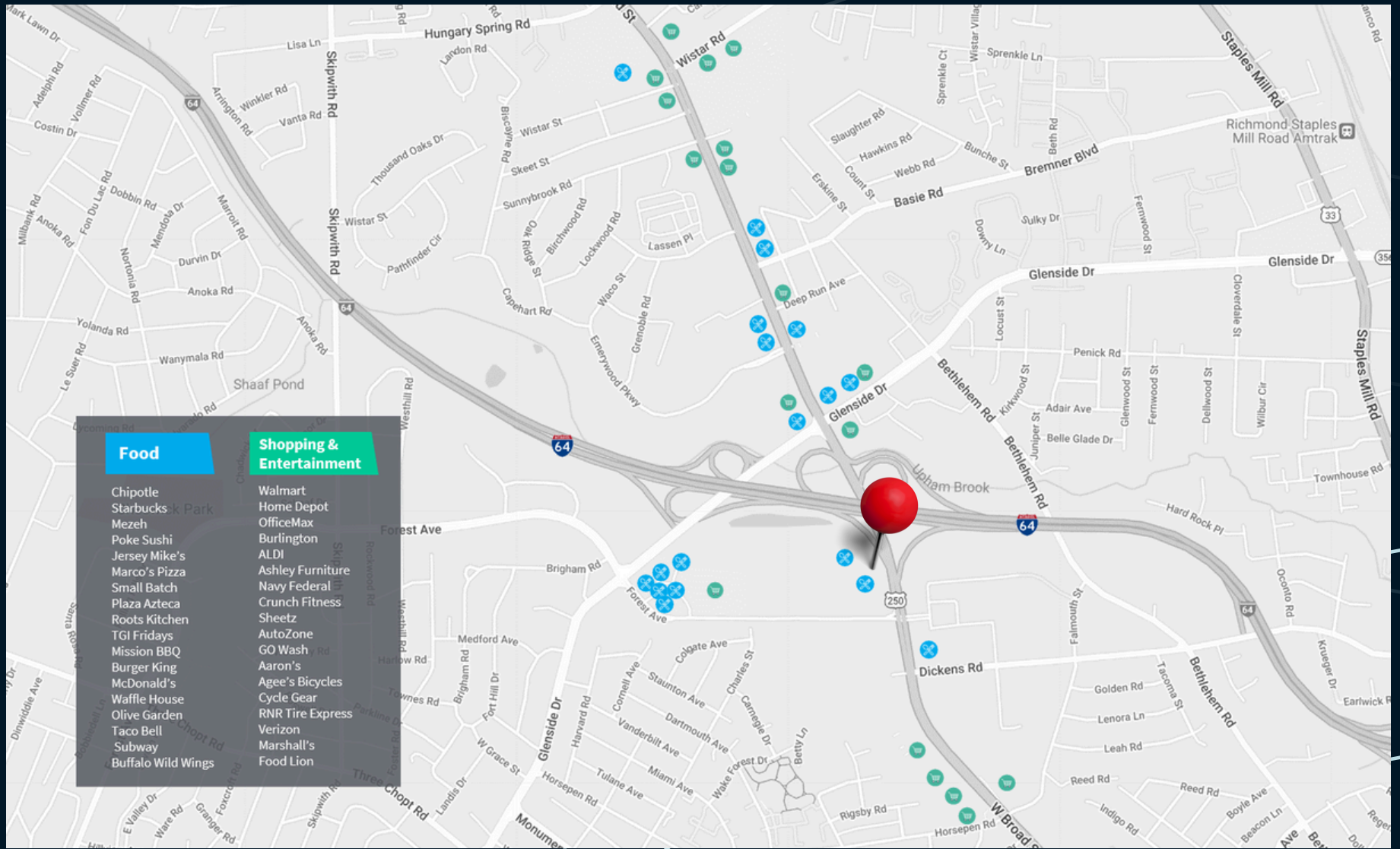
**Suite 400**  
11,858 RSF



## Property Overview

- Suite 400: 11,858 SF
- Available through 3/31/27
- Parking: 4.5/1,000 SF
- 37,725 SF Class A Office/Medical building in Reynolds Crossing
- Elevator lobby entrance
- Two large training rooms and varying sized collaboration spaces
- Well-appointed reception/lounge
- Abundant walkable dining nearby.
- Direct visibility from W. Broad Street with easy access to I-64





**Grant Holzbach**  
 grant.holzbach@jll.com  
 +1 (804) 200 6417

**Gareth Jones**  
 garetho.jones@jll.com  
 +1 (804) 200 6453