

Land
For Sale, Lease
or BTS



700 Hopkins Corner Drive

Waynesboro, GA 30830

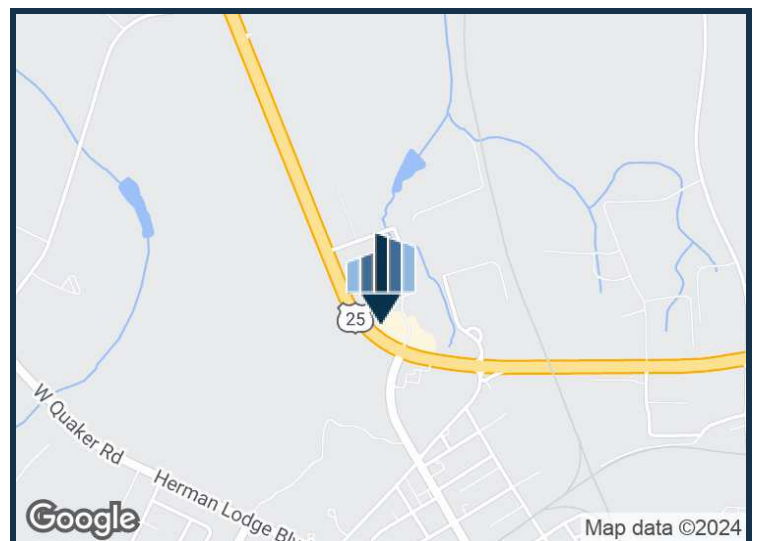
Property features

Listing Price: Subject To Offer

Property Size: 1.07 Acres

Zoning: Commercial

Parcel ID: 065 016E



Presented By:

Jonathan Crawford

Development Associate

706.854.6738

jonathan.crawford@southeastern.company

700 HOPKINS CORNER DRIVE

WAYNESBORO, GA 30830

Land
For Sale, Lease or BTS

SALE PRICE

SUBJECT TO OFFER

Property Address: 700 Hopkins Corner Drive, Waynesboro, GA 30830

Property Type: Land

APN: 065 016E

Lot Size: 1.07 AC

Zoning: Commercial

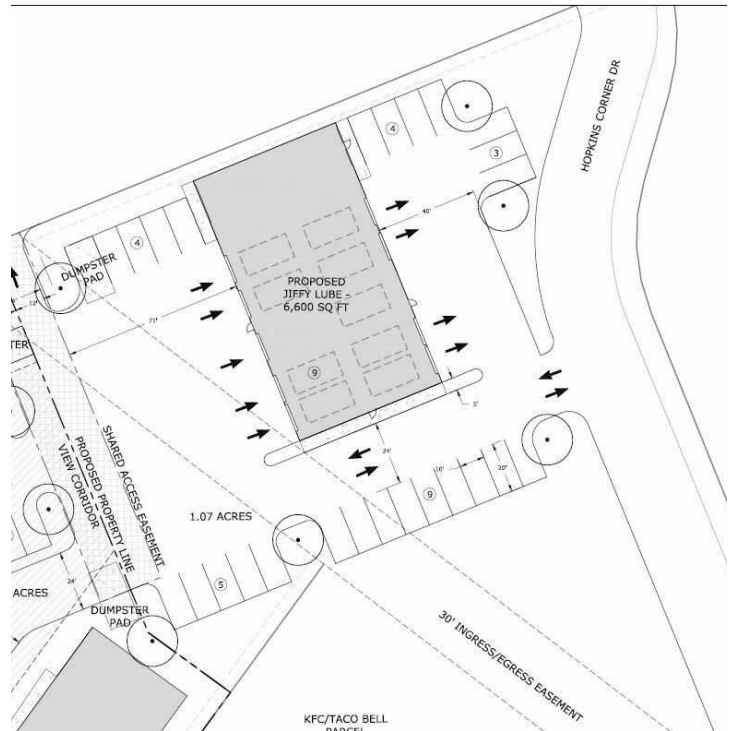


PROPERTY OVERVIEW

Pad Ready Outparcel

LOCATION OVERVIEW

Retail Opportunity just off Burke Veterans Pkwy in Waynesboro, GA. Adjacent to a Walmart Supercenter, this property offers unparalleled visibility and accessibility, ensuring a steady stream of potential customers. Benefit from high traffic flow and easy access. This is your opportunity to thrive in a premier retail location.



Presented By:

Jonathan Crawford

Development Associate

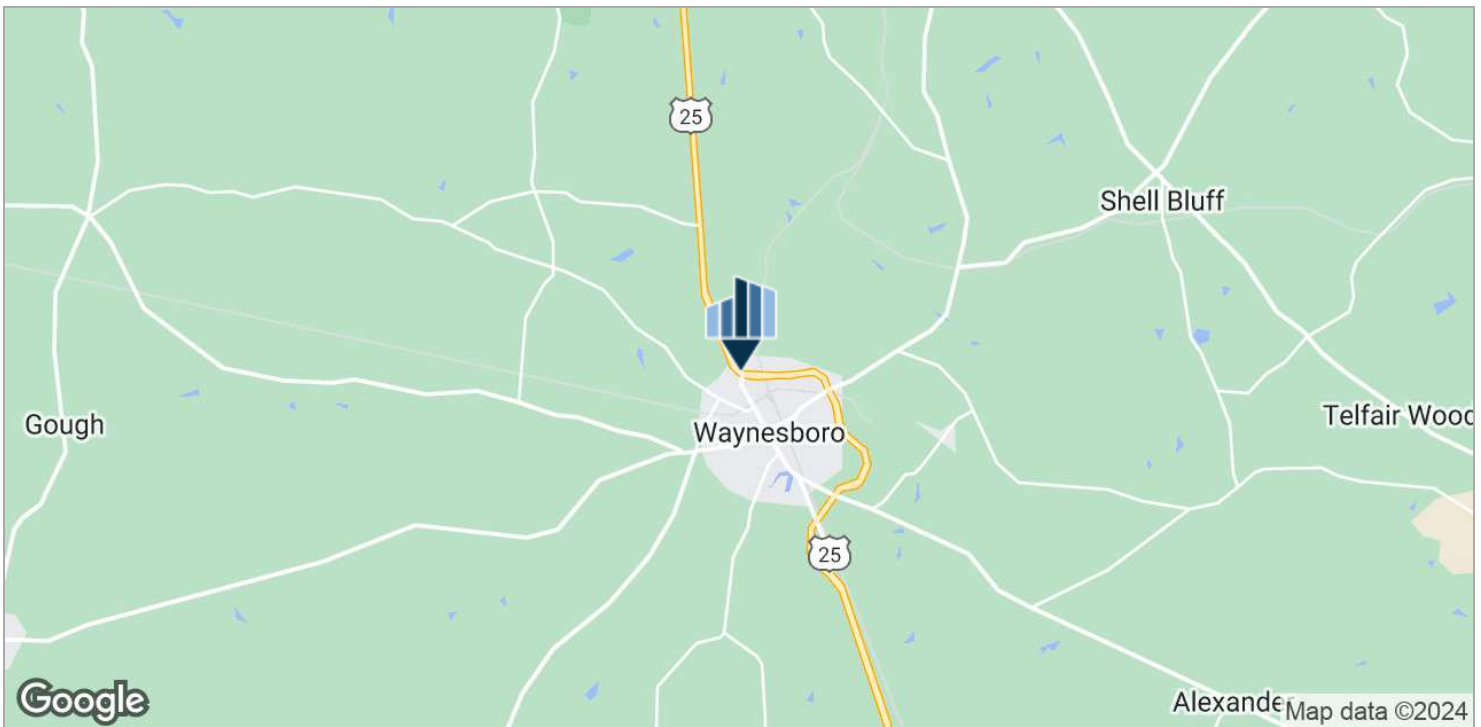
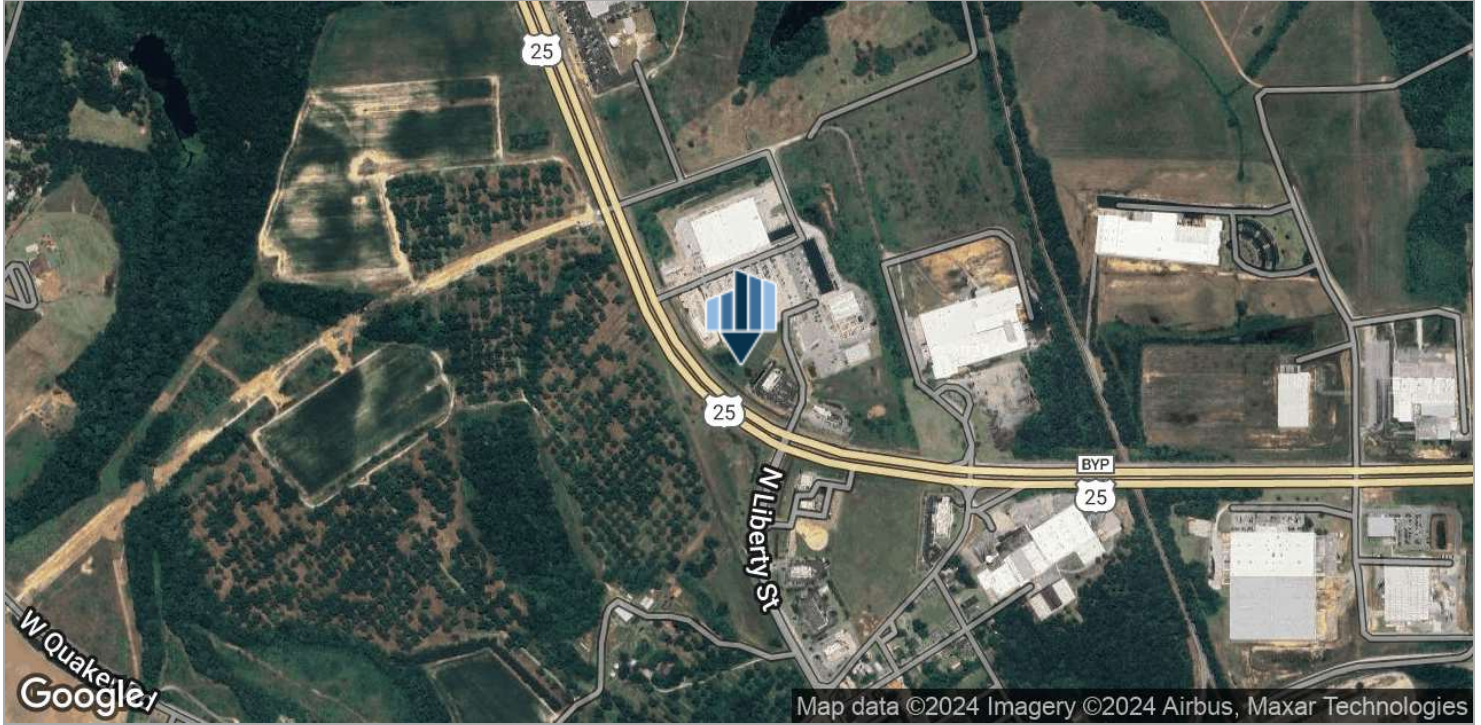
706.854.6738

jonathan.crawford@southeastern.company

700 HOPKINS CORNER DRIVE

WAYNESBORO, GA 30830

Land
For Sale, Lease or BTS



Presented By:

Jonathan Crawford

Development Associate

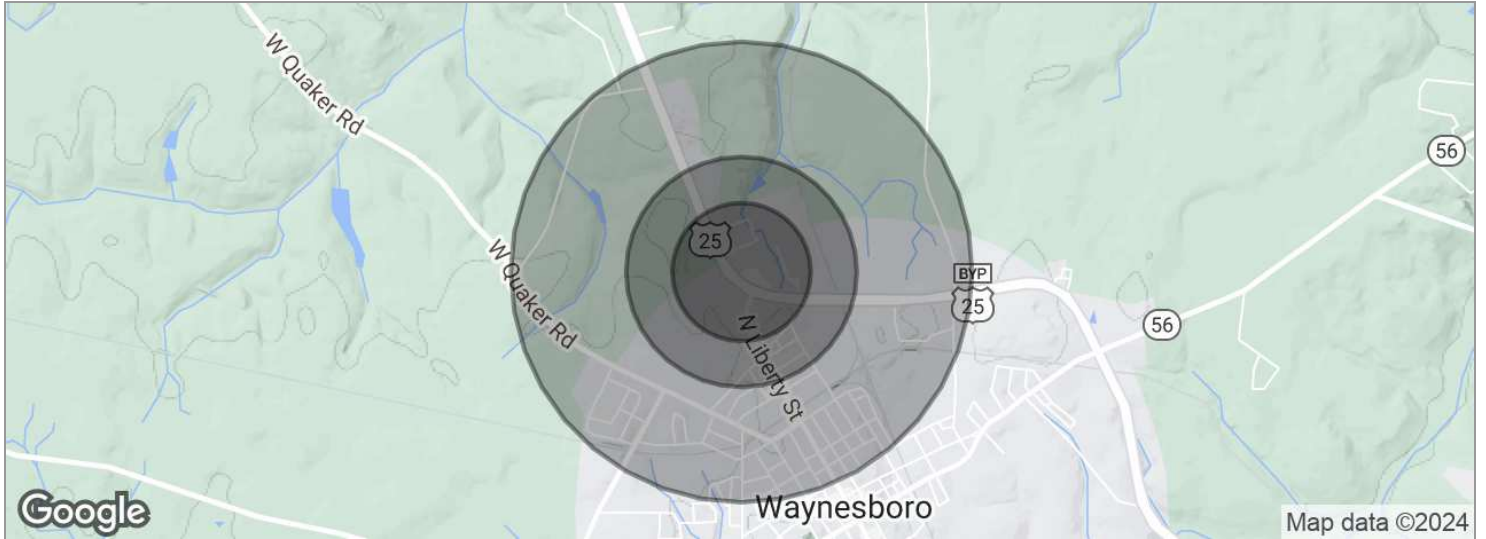
706.854.6738

jonathan.crawford@southeastern.company

Land
For Sale, Lease or BTS

700 HOPKINS CORNER DRIVE

WAYNESBORO, GA 30830



POPULATION	0.3 MILES	0.5 MILES	1 MILE
Total population	29	285	1,979
Median age	39	38	38
Median age (male)	36	37	36
Median age (Female)	41	40	41
HOUSEHOLDS & INCOME	0.3 MILES	0.5 MILES	1 MILE
Total households	11	114	805
# of persons per HH	2.6	2.5	2.5
Average HH income	\$77,277	\$70,827	\$64,205
Average house value	\$296,259	\$246,623	\$203,754

* Demographic data derived from 2020 ACS - US Census

Presented By:

Jonathan Crawford

Development Associate

706.854.6738

jonathan.crawford@southeastern.company