

39340 COUNTRY CLUB DRIVE
SUITE 100
FARMINGTON HILLS, MICHIGAN



**SIGNATURE
ASSOCIATES**
KNOW SIGNATURE | KNOW RESULTS

HI-TECH FOR LEASE
4,311 Square Feet Available

COUNTRY CLUB CORPORATE PARK



PROPERTY FEATURES

- 4,311 square feet available
- 1,100 square foot warehouse
- 18' ceilings with exposed duct work
- Newly renovated with modern updates and glass finishes throughout
- Fully air-conditioned – brand new HVAC units
- Three private offices, one conference room, showroom, large open office area with kitchette and new cabinetry, and two restrooms
- New roof
- (1) 10' x 12' automatic grade level door
- Immediate access to M-5, I-96, I-696 and I-275 via 12 Mile Road



For more information, please contact:

CHRISTOPHER M. D'ANGELO
(248) 948 0109
cdangelo@signatureassociates.com

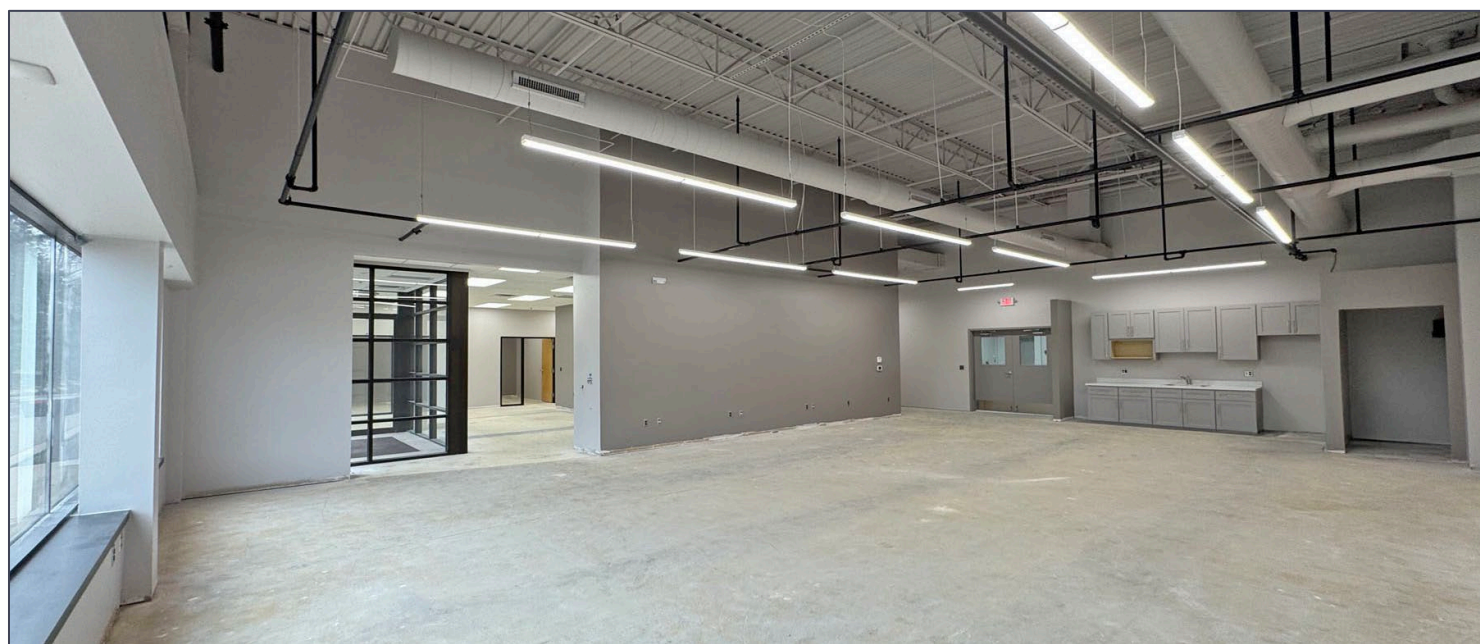
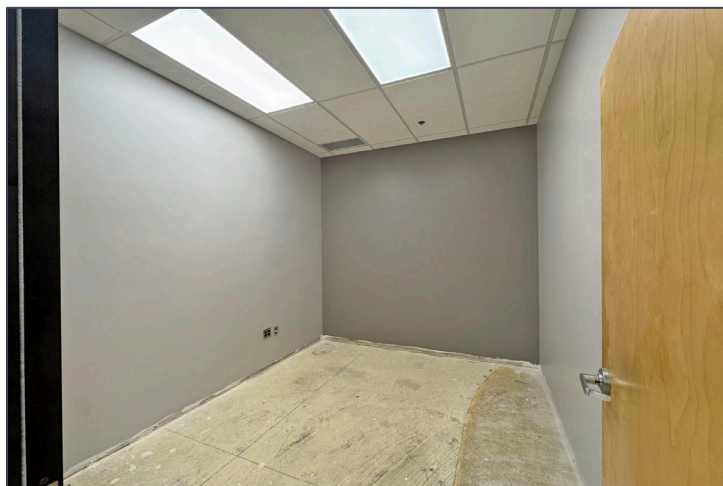
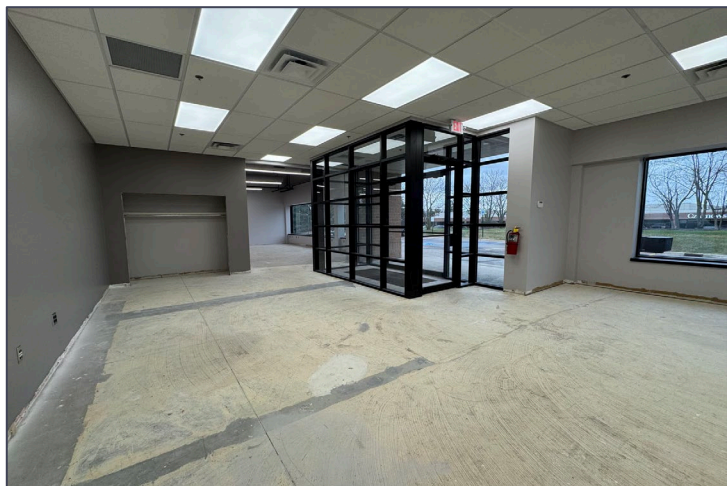
JASON STOUGH
(248) 948 4180
jstough@signatureassociates.com

SIGNATURE ASSOCIATES
One Towne Square, Suite 1200
Southfield, MI 48076
www.signatureassociates.com

39340 Country Club Drive – Farmington Hills, Michigan

Hi-Tech For Lease

4,311
Square Feet
AVAILABLE



For more information, please contact:

CHRISTOPHER M. D'ANGELO
(248) 948 0109
cdangelo@signatureassociates.com

JASON STOUGH
(248) 948 4180
jstough@signatureassociates.com

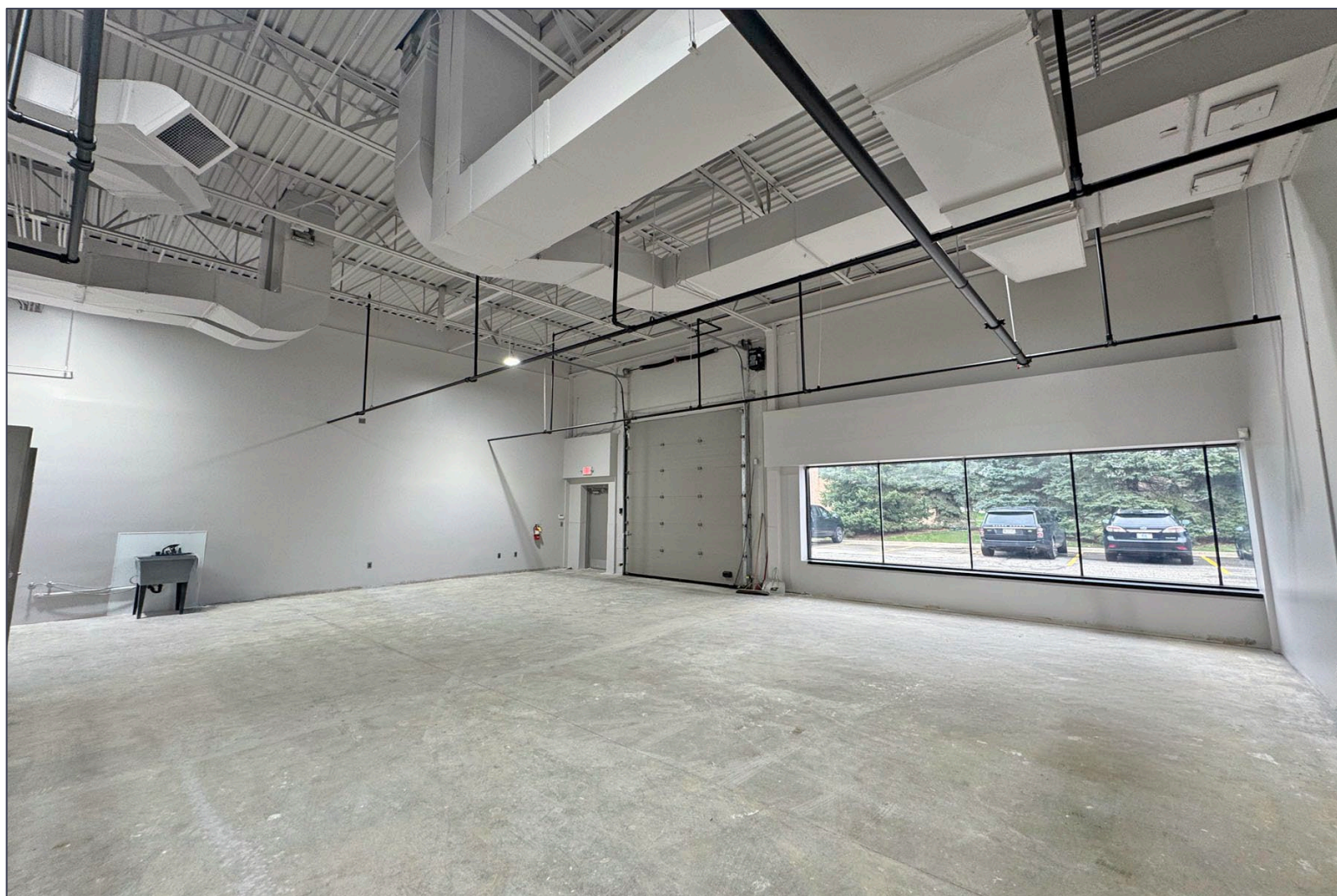
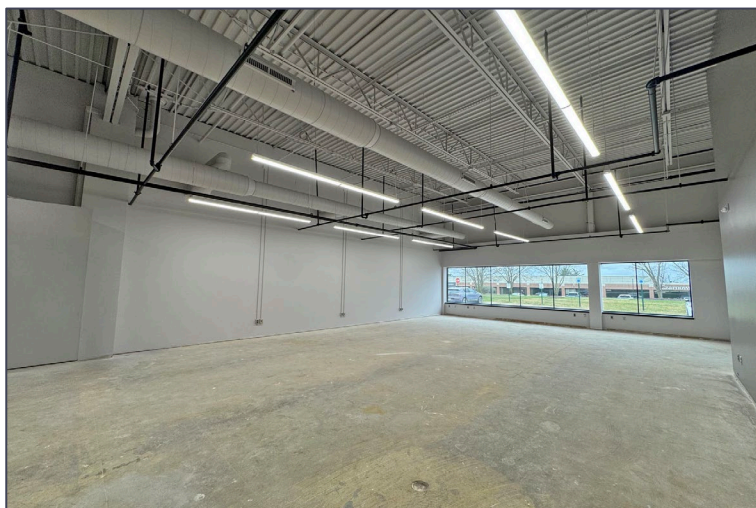
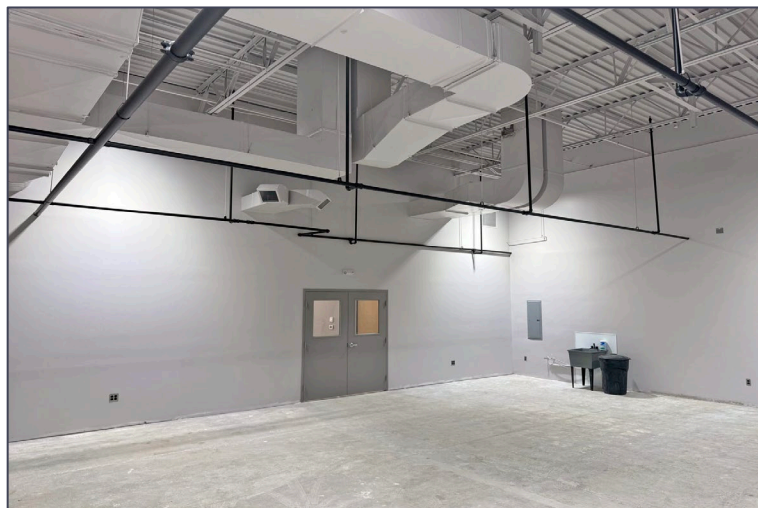
SIGNATURE ASSOCIATES
One Towne Square, Suite 1200
Southfield, MI 48076
www.signatureassociates.com

Information is subject to verification and no liability for errors or omissions is assumed. Price is subject to change and listing withdrawal.

39340 Country Club Drive – Farmington Hills, Michigan

Hi-Tech For Lease

4,311
Square Feet
AVAILABLE



For more information, please contact:

CHRISTOPHER M. D'ANGELO
(248) 948 0109
cdangelo@signatureassociates.com

JASON STOUGH
(248) 948 4180
jstough@signatureassociates.com

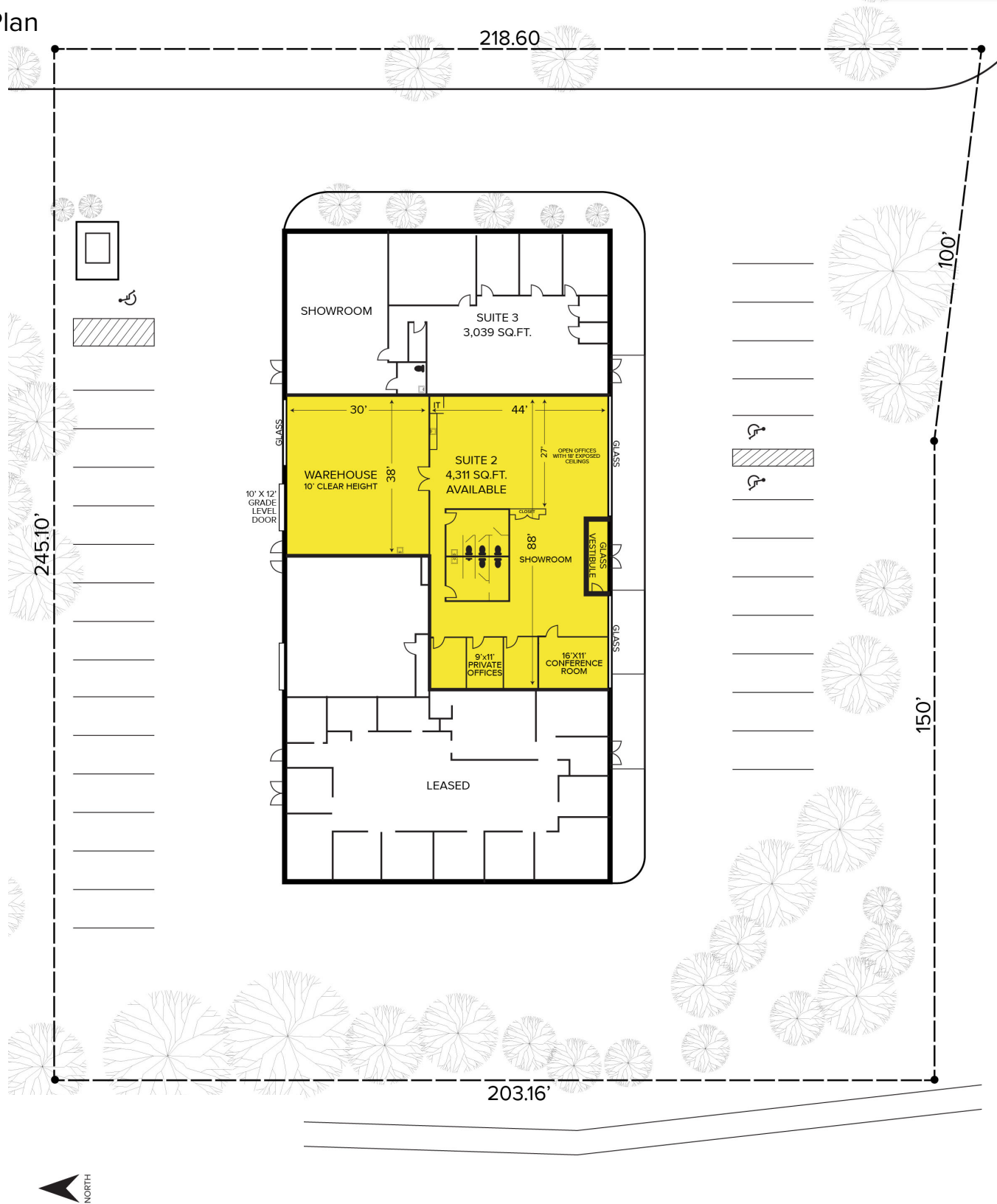
SIGNATURE ASSOCIATES
One Towne Square, Suite 1200
Southfield, MI 48076
www.signatureassociates.com

Information is subject to verification and no liability for errors or omissions is assumed. Price is subject to change and listing withdrawal.

39340 Country Club Drive – Farmington Hills, Michigan
Hi-Tech For Lease

4,311
Square Feet
AVAILABLE

Site Plan



For more information, please contact:

CHRISTOPHER M. D'ANGELO
(248) 948 0109
cdangelo@signatureassociates.com

JASON STOUGH
(248) 948 4180
jstough@signatureassociates.com

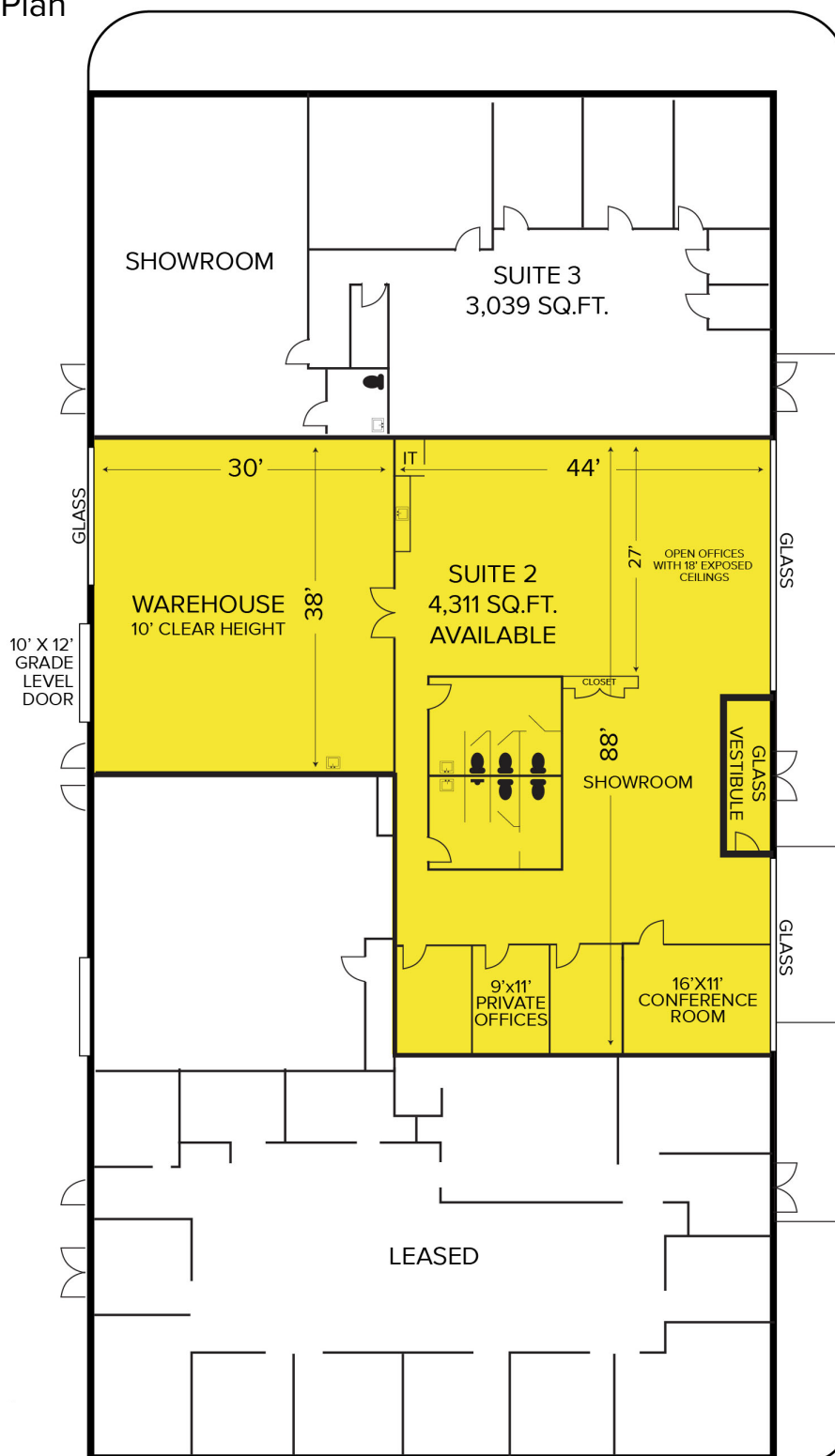
SIGNATURE ASSOCIATES
One Towne Square, Suite 1200
Southfield, MI 48076
www.signatureassociates.com

39340 Country Club Drive – Farmington Hills, Michigan

Hi-Tech For Lease

4,311
Square Feet
AVAILABLE

Proposed Floor Plan



*Measurements are approximate

For more information, please contact:

CHRISTOPHER M. D'ANGELO
(248) 948 0109
cdangelo@signatureassociates.com

JASON STOUGH
(248) 948 4180
jstough@signatureassociates.com

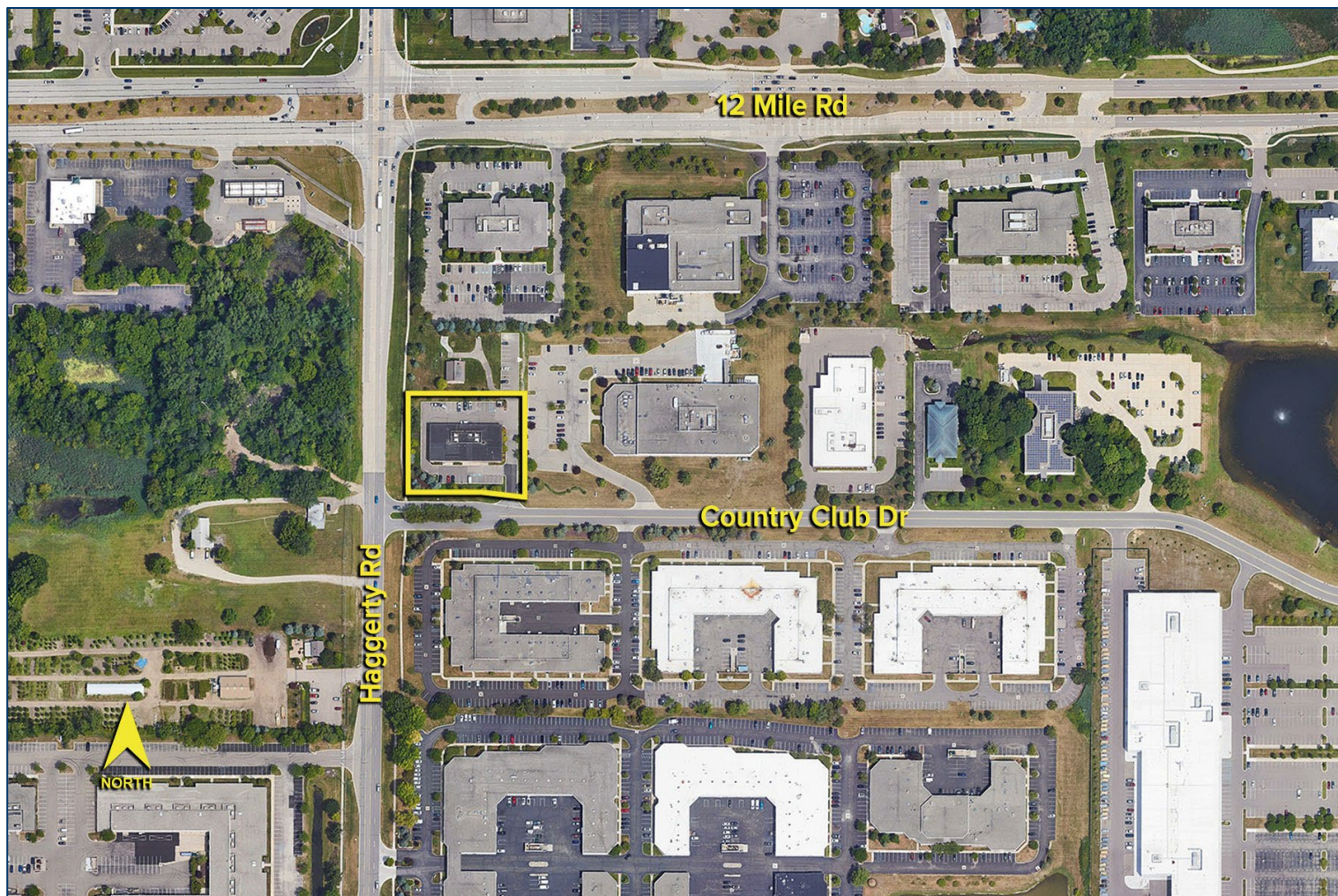
SIGNATURE ASSOCIATES
One Towne Square, Suite 1200
Southfield, MI 48076
www.signatureassociates.com

39340 Country Club Drive – Farmington Hills, Michigan

Hi-Tech For Lease

4,311
Square Feet
AVAILABLE

Aerial



For more information, please contact:

CHRISTOPHER M. D'ANGELO
(248) 948 0109
cdangelo@signatureassociates.com

JASON STOUGH
(248) 948 4180
jstough@signatureassociates.com

SIGNATURE ASSOCIATES
One Towne Square, Suite 1200
Southfield, MI 48076
www.signatureassociates.com

Information is subject to verification and no liability for errors or omissions is assumed. Price is subject to change and listing withdrawal.