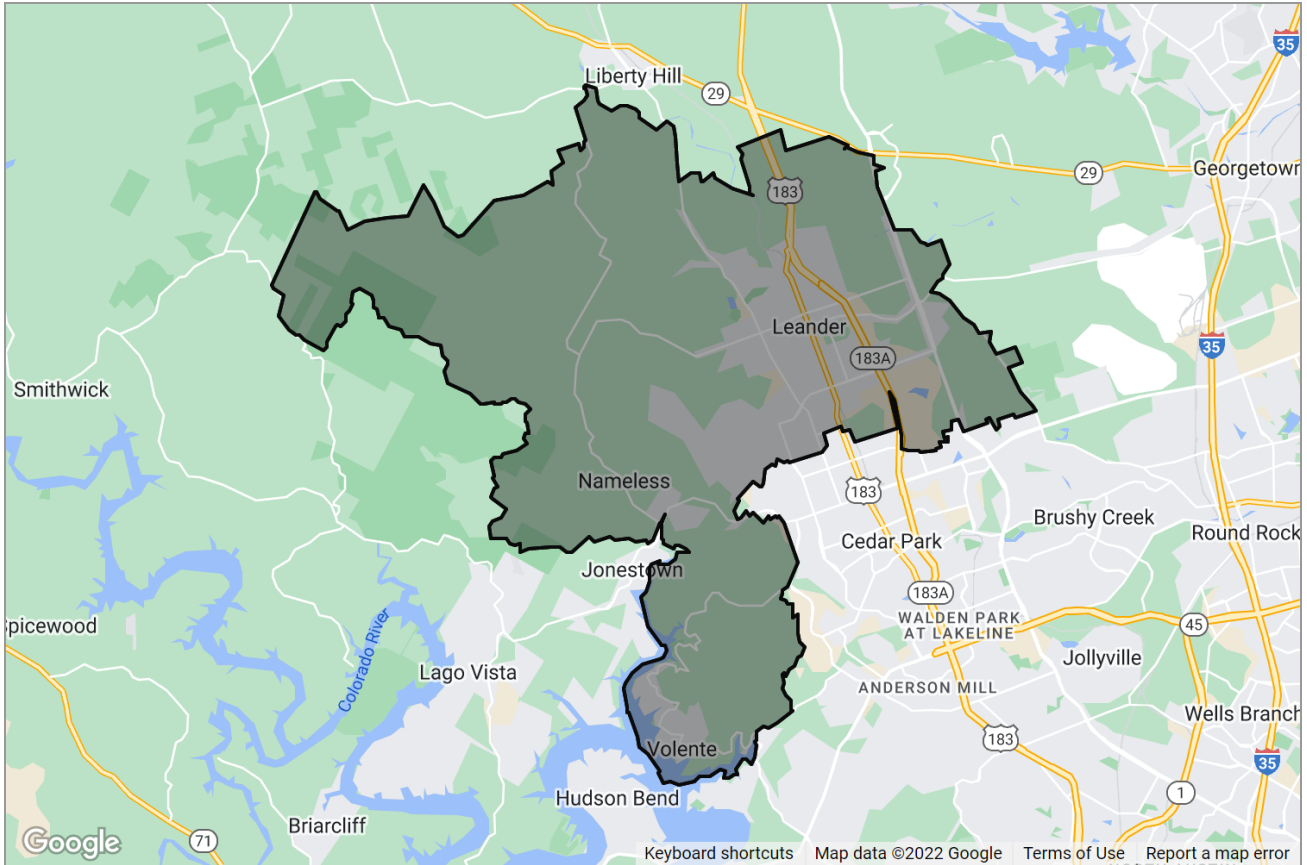


COMMERCIAL TRADE AREA REPORT

Leander, TX 78641



Presented by
Julie Mattoon | REALTOR®
Texas Real Estate License: 583751

CENTURY 21
FINE HOMES
& ESTATES.
Realty Network

Mobile: (512) 428-4503

Main: juliemattoon@gmail.com
Agent: www.austinlineandland.com

CENTURY 21 Realty Network
1310 Ranch Road 620 South Suite B198
Austin, TX 78734

Criteria Used for Analysis

2021 Key Demographic Indicators (Esri):
Total Households
28,917

2021 Household Services (Consumer Spending):
All Household Operations
\$3,038

Consumer Segmentation

<p>Life Mode</p> <p>What are the people like that live in this area?</p>	<p>Sprouting Explorers Young homeowners with families</p>	<p>Urbanization</p> <p>Where do people like this usually live?</p>	<p>Suburban Periphery Affluence in the suburbs, married couple-families, longer commutes</p>
---	--	---	---

Top Tapestry Segments	Up and Coming Families	Green Acres	Boomburbs	The Great Outdoors	Workday Drive
% of Households	12,157 (42.0%)	4,145 (14.3%)	3,596 (12.4%)	2,553 (8.8%)	2,179 (7.5%)
Lifestyle Group	Sprouting Explorers	Cozy Country Living	Affluent Estates	Cozy Country Living	Family Landscapes
Urbanization Group	Suburban Periphery	Rural	Suburban Periphery	Rural	Suburban Periphery
Residence Type	Single Family	Single Family	Single Family	Single Family	Single Family
Household Type	Married Couples	Married Couples	Married Couples	Married Couples	Married Couples
Average Household Size	3.11	2.68	3.23	2.42	2.95
Median Age	32	44.7	34.3	48.3	37.3
Diversity Index	75.5	28.5	65.5	37.3	53.5
Median Household Income	\$82,300	\$86,100	\$126,400	\$65,200	\$102,300
Median Net Worth	\$177,800	\$326,900	\$518,400	\$208,500	\$352,100
Median Home Value	\$263,400	\$283,600	\$416,100	\$302,300	\$310,000
Homeownership	78 %	87.4 %	85.5 %	80 %	86.1 %
Employment	Professional or Mgmt/Bus/Financial	Professional or Mgmt/Bus/Financial	Professional or Mgmt/Bus/Financial	Professional or Mgmt/Bus/Financial	Professional or Mgmt/Bus/Financial
Education	Some College No Degree	High School Diploma	Bachelor's Degree	High School Diploma	Bachelor's Degree
Preferred Activities	Busy with work and family . Shop around for the best deals.	Pursue physical fitness vigorously, . Active in communities and social organizations.	Physical fitness is a priority . Own the latest devices.	Prefer domestic travel to trips abroad. . Own pet dogs or cats.	Prefer outdoor activities and sports . Family-oriented purchases and activities dominate.
Financial	Carry debt, but also maintain retirement plans	Comfortable with debt, and investments.	Highest rate of mortgages	Do-it-yourself oriented and cost conscious	Well insured, invest in a range of funds, high debt
Media	Rely on the Internet for entertainment and information	Provided by satellite service, radio and television	Own, use latest devices	Watch CMT, History Channel, Fox News	Connected, with a host of wireless devices
Vehicle	Own late model import SUVs or compacts	Late model trucks SUVs, ATVs and motorcycles	Prefer late model imports, primarily SUVs	Own 4-wheel drive trucks	Own 2+ vehicles (minivans, SUVs)

About this segment

Up and Coming Families

This is the

#1

dominant segment for this area

In this area

42.0%

of households fall into this segment

In the United States

2.6%

of households fall into this segment

An overview of who makes up this segment across the United States

Who We Are

Up and Coming Families is a market in transition. Residents are younger and more mobile than the previous generation. They are ambitious, working hard to get ahead, and willing to take some risks to achieve their goals. The recession has impacted their financial well-being, but they are optimistic. Their homes are new; their families are young. And this is one of the fastest-growing markets in the country.

Our Neighborhood

- New suburban periphery: new families in new housing subdivisions. Building began in the housing boom of the 2000s and continues in this fast-growing market. Single-family homes with a median value of \$194,400 and a lower vacancy rate. The price of affordable housing: longer commute times

Socioeconomic Traits

- Education: 67% have some college education or degree(s). Hard-working labor force with a participation rate of 71%. Most households (61%) have 2 or more workers. Careful shoppers, aware of prices, willing to shop around for the best deals and open to influence by others' opinions. Seek the latest and best in technology. Young families still feathering the nest and establishing their style.

Market Profile

- Rely on the Internet for entertainment, information, shopping, and banking. Prefer imported SUVs or compact cars, late models. Carry debt from credit card balances to student loans and mortgages, but also maintain retirement plans and make charitable contributions. Busy with work and family; use home and landscaping services to save time. Find leisure in family activities, movies at home, trips to theme parks or the zoo, and sports; from golfing, weight lifting, to taking a jog or run.

The demographic segmentation shown here can help you understand the lifestyles and life stages of consumers in a market. Data provider Esri classifies U.S. residential neighborhoods into 67 unique market segments based on socioeconomic and demographic characteristics. Data Source: Esri 2021. Update Frequency: Annually.

About this segment

Green Acres

This is the

#2

dominant segment
for this area

In this area

14.3%

of households fall
into this segment

In the United States

3.3%

of households fall
into this segment

An overview of who makes up this segment across the United States

Who We Are

The Green Acres lifestyle features country living and self-reliance. Avid do-it-yourselfers, they maintain and remodel their homes, with all the necessary power tools to accomplish the jobs. Gardening, especially growing vegetables, is a priority, again with the right tools, tillers, tractors, and riding mowers. Outdoor living features a variety of sports: hunting and fishing, motorcycling, hiking and camping, and even golf.

Our Neighborhood

- This large segment is concentrated in rural enclaves in metropolitan areas. Primarily (not exclusively) older homes with acreage; new housing growth in the past 15 years. Single-family, owner-occupied housing, with a median value of \$235,500. An older market, primarily married couples, most with no children.

Socioeconomic Traits

- Education: More than 60% are college educated. Labor force participation rate is high at 66.8%. Income is derived not only from wages and salaries but also from self-employment (more than 13% of households), investments (27% of households), and increasingly, from retirement. They are cautious consumers with a focus on quality and durability. Comfortable with technology, more as a tool than a trend: banking or paying bills online is convenient; but the Internet is not viewed as entertainment. Economic outlook is professed as pessimistic, but consumers are comfortable with debt, primarily as home and auto loans, and investments.

Market Profile

- Purchasing choices reflect Green Acres residents' country life, including a variety of vehicles, from trucks and SUVs to ATVs and motorcycles, preferably late model. Homeowners favor DIY home improvement projects and gardening. Media of choice are provided by satellite service, radio, and television, also with an emphasis on country and home and garden. Green Acres residents pursue physical fitness vigorously, from working out on home exercise equipment to playing a variety of sports. Residents are active in their communities and a variety of social organizations, from charitable to veterans' clubs.

The demographic segmentation shown here can help you understand the lifestyles and life stages of consumers in a market. Data provider Esri classifies U.S. residential neighborhoods into 67 unique market segments based on socioeconomic and demographic characteristics. Data Source: Esri 2021. Update Frequency: Annually.

About this segment

Boomburbs

This is the

#3

dominant segment
for this area

In this area

12.4%

of households fall
into this segment

In the United States

1.8%

of households fall
into this segment

An overview of who makes up this segment across the United States

Who We Are

Young professionals with families who have opted to trade up to the newest housing in the suburbs make up this growth market. Original Boomburbs neighborhoods began growing in the 1990s and continued through the peak of the housing boom. Most of those neighborhoods are fully developed now. This is an affluent market but with a higher proportion of mortgages. Rapid growth still distinguishes the Boomburbs neighborhoods, although the boom is more subdued now than it was 10 years ago. So is the housing market. Residents are well-educated professionals with a running start on prosperity.

Our Neighborhood

- Growth markets are in the suburban periphery of large metropolitan areas. Young families are married with children; average household size is 3.25. Home ownership is 84%, with the highest rate of mortgages, 71.5%. Primarily single-family homes, in new neighborhoods, 66% built since 2000. Median home value is \$350,000. Lower housing vacancy rate at 3.7%. The cost of affordable new housing comes at the expense of one of the longest commutes to work, over 30 minutes average, including a disproportionate number (33.6%) commuting across county lines.

Socioeconomic Traits

- Well educated young professionals, 55% are college graduates. High labor force participation at 71.3%; most households have more than two workers. Longer commute times from the suburban growth corridors have created more home workers. Well connected, own the latest devices and understand how to use them efficiently; biggest complaints—too many devices and too many intrusions on personal time. Financial planning is well under way for these professionals.

Market Profile

- Boomburbs residents prefer late model imports, primarily SUVs, and also luxury cars and minivans. This is one of the top markets for the latest in technology, from smartphones to tablets to Internet connectable televisions. Style matters in the Boomburbs, from personal appearance to their homes. These consumers are still furnishing their new homes and already remodeling. Enjoy gardening but more often contract for home services. Physical fitness is a priority, including club memberships and home equipment. Leisure includes a range of activities from sports (hiking, bicycling, swimming, golf) to visits to theme parks or water parks. Residents are generous supporters of charitable organizations.

The demographic segmentation shown here can help you understand the lifestyles and life stages of consumers in a market. Data provider Esri classifies U.S. residential neighborhoods into 67 unique market segments based on socioeconomic and demographic characteristics. Data Source: Esri 2021. Update Frequency: Annually.

About this segment

The Great Outdoors

This is the

#4

dominant segment for this area

In this area

8.8%

of households fall into this segment

In the United States

1.6%

of households fall into this segment

An overview of who makes up this segment across the United States

Who We Are

These neighborhoods are found in pastoral settings throughout the United States. Consumers are educated empty nesters living an active but modest lifestyle. Their focus is land. They are more likely to invest in real estate or a vacation home than stocks. They are active gardeners and partial to homegrown and home-cooked meals. Although retirement beckons, most of these residents still work, with incomes slightly above the US level.

Our Neighborhood

- Over 55% of households are married-couple families; 36% are couples with no children living at home. Average household size is slightly smaller at 2.44. Typical of areas with rustic appeal, the housing inventory features single-family homes (77%) and mobile homes (15%); a significant inventory of seasonal housing is available. Residents live in small towns and rural communities throughout the West, South, and Northeast regions of the country. More than half of all homes were constructed between 1970 and 2000. Most households have one or two vehicles; average travel time to work is slightly higher (28 minutes) despite a disproportionate number that work from home.

Market Profile

- Satellite dishes and riding lawn mowers are familiar sights in these rural settings, along with multiple vehicles; four-wheel drive trucks are popular, too. Residents are members of AARP and veterans' clubs and support various civic causes. Technology is not central in their lives; light use of Internet connectivity for shopping to entertainment. Most households have pets, dogs or cats. Television channels such as CMT, History, and Fox News are popular. They enjoy outdoor activities such as hiking, hunting, fishing, and boating.

Socioeconomic Traits

- 60% have attended college or hold a degree. Labor force participation is low at 60%. Typical of neighborhoods with older residents, income from retirement and Social Security is common, but residents also derive income from self-employment and investments. Residents are very do-it-yourself oriented and cost conscious. Many service their own autos, work on home improvement and remodeling projects, and maintain their own yards. They prefer domestic travel to trips abroad.

The demographic segmentation shown here can help you understand the lifestyles and life stages of consumers in a market. Data provider Esri classifies U.S. residential neighborhoods into 67 unique market segments based on socioeconomic and demographic characteristics. Data Source: Esri 2021. Update Frequency: Annually.

About this segment

Workday Drive

This is the
#5
dominant segment
for this area

In this area
7.5%
of households fall
into this segment

In the United States
3.0%
of households fall
into this segment

An overview of who makes up this segment across the United States

Who We Are

Workday Drive is an affluent, family-oriented market with a country flavor. Residents are partial to new housing away from the bustle of the city but close enough to commute to professional job centers. Life in this suburban wilderness offsets the hectic pace of two working parents with growing children. They favor time-saving devices, like banking online or housekeeping services, and family-oriented pursuits.

Our Neighborhood

- Workday Drive residents prefer the suburban periphery of metropolitan areas. Predominantly single family, homes are in newer neighborhoods, 34% built in the 1990s, 31% built since 2000. Owner-occupied homes have high rate of mortgages at 68%, and low rate vacancy at 4%. Median home value is \$257,400. Most households are married couples with children; average household size is 2.97. Most households have 2 or 3 vehicles; long travel time to work including a disproportionate number commuting from a different county

Socioeconomic Traits

- Education: 40.5% college graduates, more than 72% with some college education. High labor force participation rate at 71%; 2 out of 3 households include 2+ workers. Connected, with a host of wireless devices, anything that enables convenience, like banking, paying bills, or even shopping online. Well insured and invested in a range of funds, from savings accounts or bonds to stocks. Carry a higher level of debt, including first and second mortgages and auto loans.

Market Profile

- Most households own at least 2 vehicles; the most popular types are minivans and SUVs. Family-oriented purchases and activities dominate, like 4+ televisions, movie purchases or rentals, children's apparel and toys, and visits to theme parks or zoos. Outdoor activities and sports are characteristic of life in the suburban periphery. They attend sporting events, as well as participate in them like bicycling, jogging, golfing, and boating. Home maintenance services are frequently contracted, but these families also like their gardens and own the tools for minor upkeep, like lawn mowers, trimmers, and blowers.

The demographic segmentation shown here can help you understand the lifestyles and life stages of consumers in a market. Data provider Esri classifies U.S. residential neighborhoods into 67 unique market segments based on socioeconomic and demographic characteristics. Data Source: Esri 2021. Update Frequency: Annually.

Leander, TX 78641: Population Comparison

Total Population

This chart shows the total population in an area, compared with other geographies.

Data Source: U.S. Census American Community Survey via Esri, 2021

Update Frequency: Annually

■ 2021
■ 2025 (Projected)



Population Density

This chart shows the number of people per square mile in an area, compared with other geographies.

Data Source: U.S. Census American Community Survey via Esri, 2021

Update Frequency: Annually

■ 2021
■ 2025 (Projected)



Population Change Since 2010

This chart shows the percentage change in area's population from 2010 to 2021, compared with other geographies.

Data Source: U.S. Census American Community Survey via Esri, 2021

Update Frequency: Annually

■ 2021
■ 2025 (Projected)



Total Daytime Population

This chart shows the number of people who are present in an area during normal business hours, including workers, and compares that population to other geographies. Daytime population is in contrast to the "resident" population present during evening and nighttime hours.

Data Source: U.S. Census American Community Survey via Esri, 2021

Update Frequency: Annually

■ 78641



Daytime Population Density

This chart shows the number people who are present in an area during normal business hours, including workers, per square mile in an area, compared with other geographies. Daytime population is in contrast to the "resident" population present during evening and nighttime hours.

Data Source: U.S. Census American Community Survey via Esri, 2021

Update Frequency: Annually



Average Household Size

This chart shows the average household size in an area, compared with other geographies.

Data Source: U.S. Census American Community Survey via Esri, 2021

Update Frequency: Annually



Population Living in Family Households

This chart shows the percentage of an area's population that lives in a household with one or more individuals related by birth, marriage or adoption, compared with other geographies.

Data Source: U.S. Census American Community Survey via Esri, 2021

Update Frequency: Annually



Female / Male Ratio

This chart shows the ratio of females to males in an area, compared with other geographies.

Data Source: U.S. Census American Community Survey via Esri, 2021

Update Frequency: Annually



Leander, TX 78641: Age Comparison

Median Age

This chart shows the median age in an area, compared with other geographies.

Data Source: U.S. Census American Community Survey via Esri, 2021

Update Frequency: Annually

■ 2021
■ 2025 (Projected)



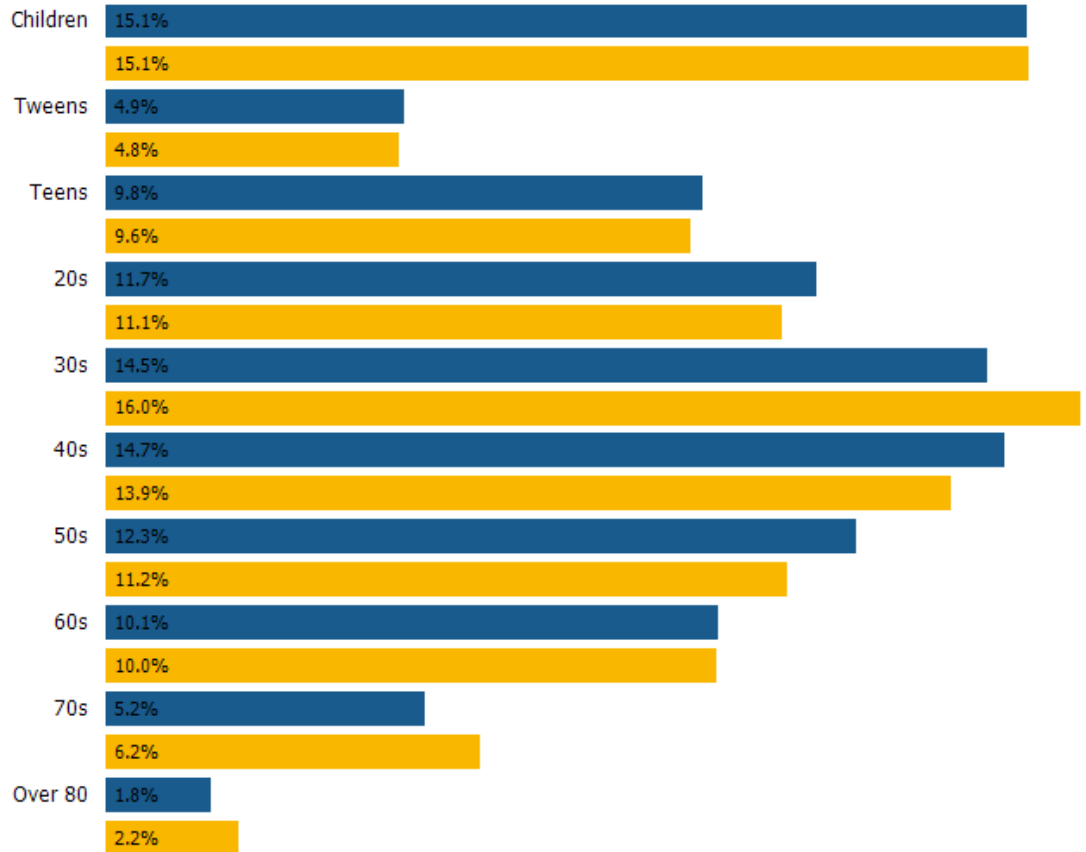
Population by Age

This chart breaks down the population of an area by age group.

Data Source: U.S. Census American Community Survey via Esri, 2021

Update Frequency: Annually

■ 2021
■ 2025 (Projected)



Leander, TX 78641: Marital Status Comparison

Married / Unmarried Adults Ratio

This chart shows the ratio of married to unmarried adults in an area, compared with other geographies.

Data Source: U.S. Census American Community Survey via Esri, 2021

Update Frequency: Annually



Married

This chart shows the number of people in an area who are married, compared with other geographies.

Data Source: U.S. Census American Community Survey via Esri, 2021

Update Frequency: Annually



Never Married

This chart shows the number of people in an area who have never been married, compared with other geographies.

Data Source: U.S. Census American Community Survey via Esri, 2021

Update Frequency: Annually



Widowed

This chart shows the number of people in an area who are widowed, compared with other geographies.

Data Source: U.S. Census American Community Survey via Esri, 2021

Update Frequency: Annually



Divorced

This chart shows the number of people in an area who are divorced, compared with other geographies.

Data Source: U.S. Census American Community Survey via Esri, 2021

Update Frequency: Annually



Leander, TX 78641: Economic Comparison

Average Household Income

This chart shows the average household income in an area, compared with other geographies

Data Source: U.S. Census American Community Survey via Esri, 2021

Update Frequency: Annually

■ 2021
■ 2025 (Projected)



Median Household Income

This chart shows the median household income in an area, compared with other geographies

Data Source: U.S. Census American Community Survey via Esri, 2021

Update Frequency: Annually

■ 2021
■ 2025 (Projected)



Per Capita Income

This chart shows per capita income in an area, compared with other geographies

Data Source: U.S. Census American Community Survey via Esri, 2021

Update Frequency: Annually

■ 2021
■ 2025 (Projected)



Average Disposable Income

This chart shows the average disposable income in an area, compared with other geographies

Data Source: U.S. Census American Community Survey via Esri, 2021

Update Frequency: Annually



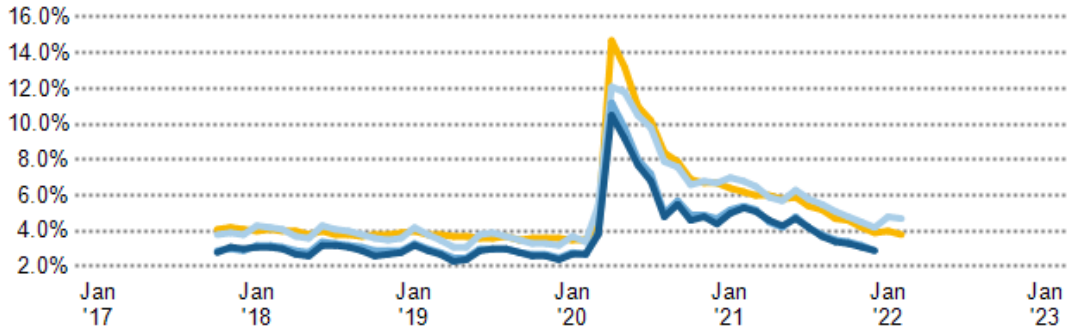
Unemployment Rate

This chart shows the unemployment trend in an area, compared with other geographies

Data Source: Bureau of Labor Statistics via 3DL

Update Frequency: Monthly

- Leander
- Williamson County
- Texas
- USA

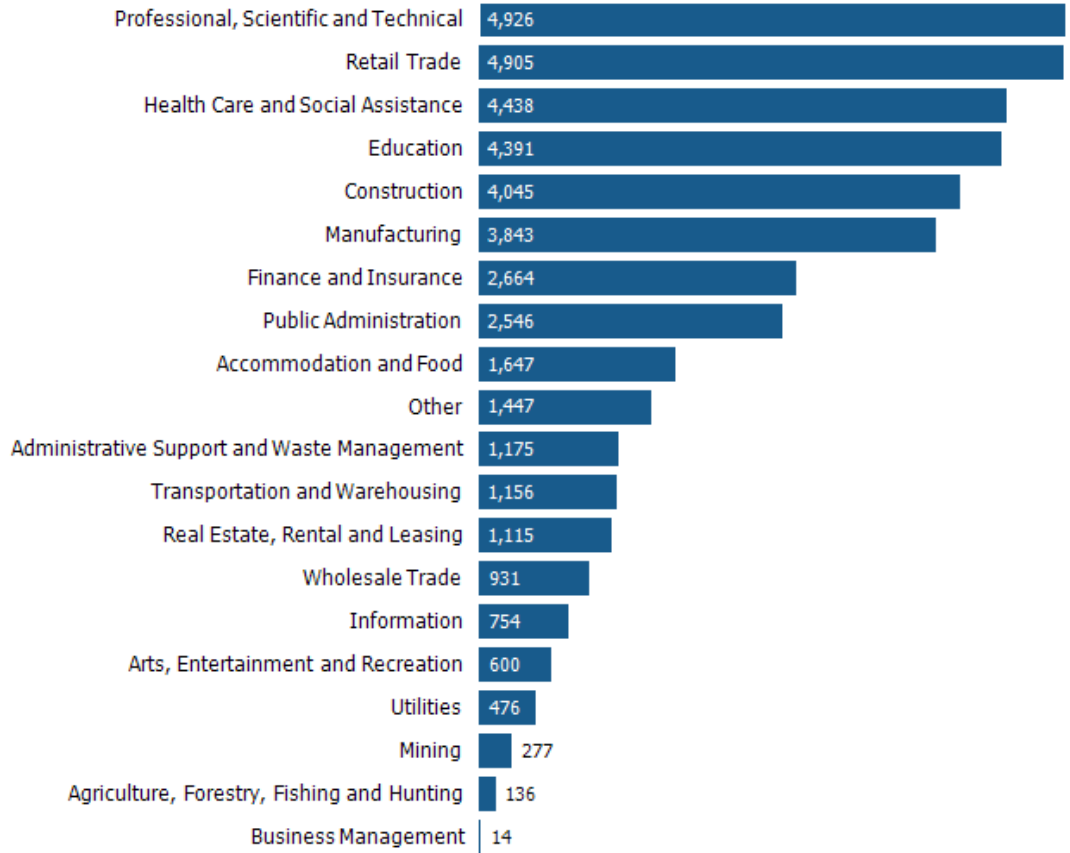


Employment Count by Industry

This chart shows industries in an area and the number of people employed in each category.

Data Source: Bureau of Labor Statistics via Esri, 2021

Update Frequency: Annually



Leander, TX 78641: Education Comparison

Less than 9th Grade

This chart shows the percentage of people in an area who have less than a ninth grade education, compared with other geographies.

Data Source: U.S. Census American Community Survey via Esri, 2021

Update Frequency: Annually



Some High School

This chart shows the percentage of people in an area whose highest educational achievement is some high school, without graduating or passing a high school GED test, compared with other geographies.

Data Source: U.S. Census American Community Survey via Esri, 2021

Update Frequency: Annually



High School GED

This chart shows the percentage of people in an area whose highest educational achievement is passing a high school GED test, compared with other geographies.

Data Source: U.S. Census American Community Survey via Esri, 2021

Update Frequency: Annually



High School Graduate

This chart shows the percentage of people in an area whose highest educational achievement is high school, compared with other geographies.

Data Source: U.S. Census American Community Survey via Esri, 2021

Update Frequency: Annually



Some College

This chart shows the percentage of people in an area whose highest educational achievement is some college, without receiving a degree, compared with other geographies.

Data Source: U.S. Census American Community Survey via Esri, 2021

Update Frequency: Annually



Associate Degree

78641

9.5%

This chart shows the percentage of people in an area whose highest educational achievement is an associate degree, compared with other geographies.

Williamson County

9.0%

Texas

7.6%

Data Source: U.S. Census American Community Survey via Esri, 2021

Update Frequency: Annually

Bachelor's Degree

78641

28.2%

This chart shows the percentage of people in an area whose highest educational achievement is a bachelor's degree, compared with other geographies.

Williamson County

28.2%

Texas

20.3%

Data Source: U.S. Census American Community Survey via Esri, 2021

Update Frequency: Annually

Grad/Professional Degree

78641

12.8%

This chart shows the percentage of people in an area whose highest educational achievement is a graduate or professional degree, compared with other geographies.

Williamson County

14.6%

Texas

11.0%

Data Source: U.S. Census American Community Survey via Esri, 2021

Update Frequency: Annually

Leander, TX 78641: Commute Comparison

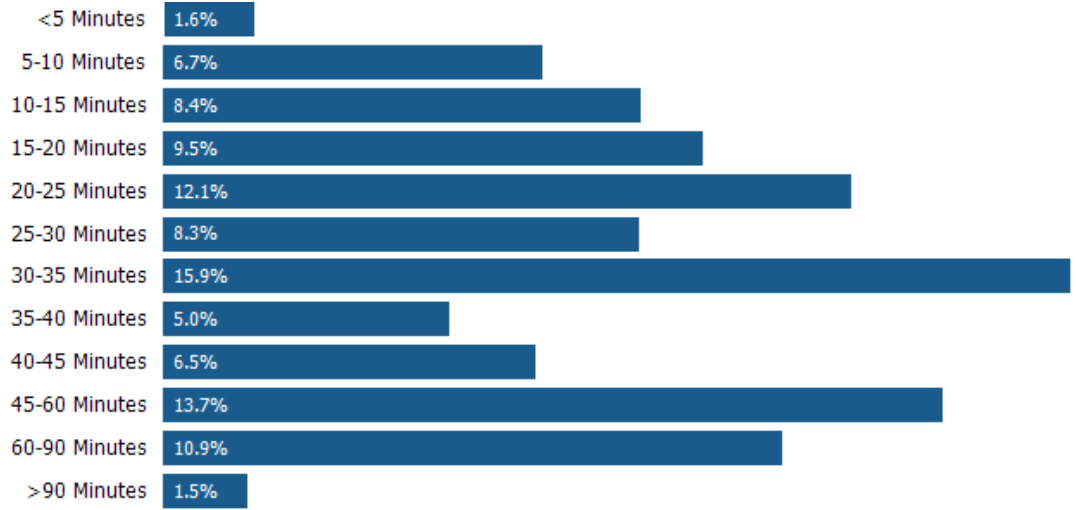
Average Commute Time

This chart shows average commute times to work, in minutes, by percentage of an area's population.

Data Source: U.S. Census American Community Survey via Esri, 2021

Update Frequency: Annually

78641



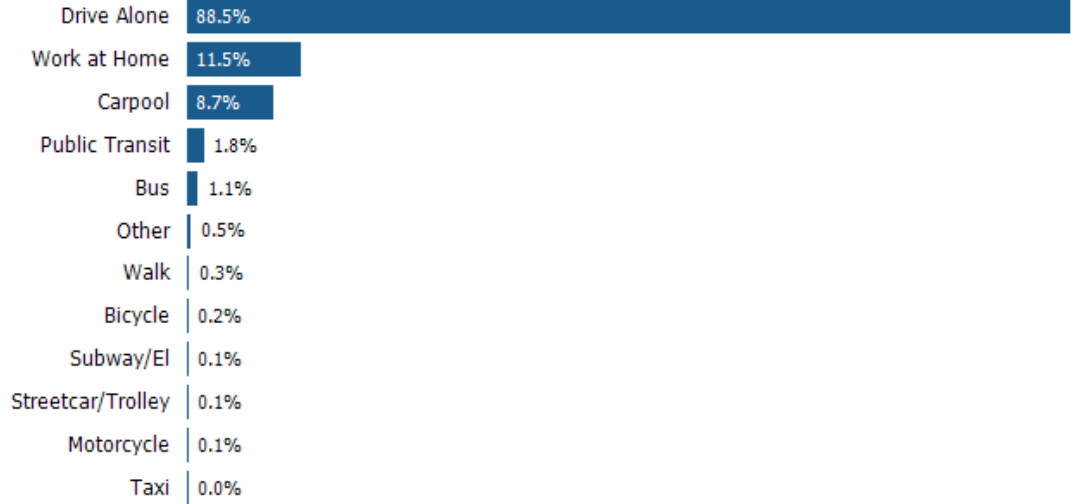
How People Get to Work

This chart shows the types of transportation that residents of the area you searched use for their commute, by percentage of an area's population.

Data Source: U.S. Census American Community Survey via Esri, 2021

Update Frequency: Annually

78641



Leander, TX 78641: Home Value Comparison

Median Estimated Home Value

This chart displays property estimates for an area and a subject property, where one has been selected. Estimated home values are generated by a valuation model and are not formal appraisals.

Data Source: Valuation calculations based on public records and MLS sources where licensed

Update Frequency: Monthly



12 mo. Change in Median Estimated Home Value

This chart shows the 12-month change in the estimated value of all homes in this area, the county and the state. Estimated home values are generated by a valuation model and are not formal appraisals.

Data Source: Valuation calculations based on public records and MLS sources where licensed

Update Frequency: Monthly



Median Listing Price

This chart displays the median listing price for homes in this area, the county, and the state.

Data Source: Listing data

Update Frequency: Monthly



12 mo. Change in Median Listing Price

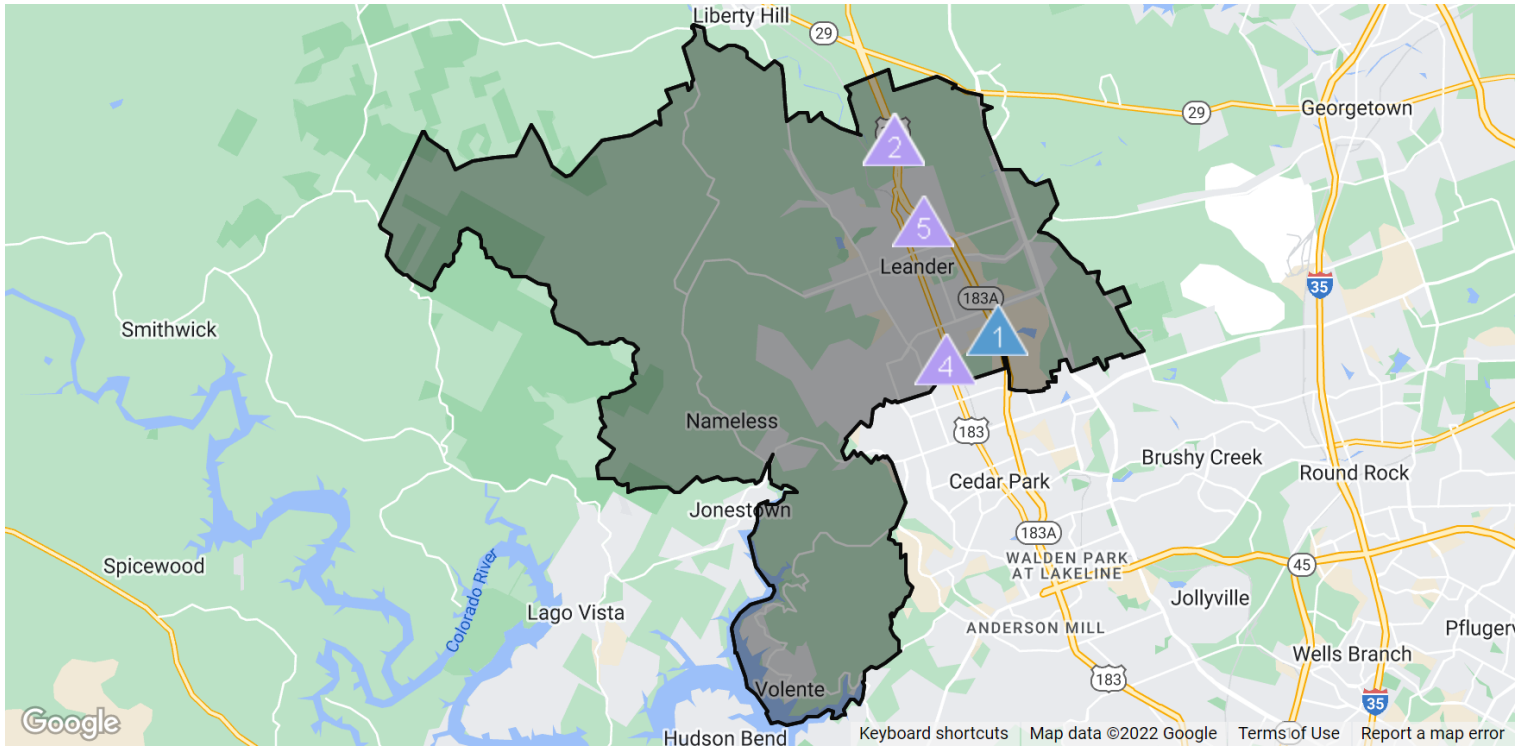
This chart displays the 12-month change in the median listing price of homes in this area, and compares it to the county and state.

Data Source: Listing data

Update Frequency: Monthly



Traffic Counts



Daily Traffic Counts: ▲ Up 6,000 / day ▲ 6,001 – 15,000 ▲ 15,001 – 30,000 ▲ 30,001 – 50,000 ▲ 50,001 – 100,000 ▲ Over 100,000 / day

1

58,941

2021 Est. daily traffic counts

Street: 183A Toll Road
Cross: Faustino Cove
Cross Dir: NW
Dist: 0.15 miles

Historical counts

Year	Count	Type
2019	58,014	AADT
2018	57,600	AADT

2

39,038

2019 Est. daily traffic counts

Street: –
Cross: –
Cross Dir: –
Dist: –

Historical counts

Year	Count	Type
2018	39,038	AADT
2013	22,726	AADT
2010	19,700	AADT
2005	13,500	AADT

3

35,272

2021 Est. daily traffic counts

Street: US Hwy 183
Cross: River Run
Cross Dir: NW
Dist: 0.02 miles

Historical counts

Year	Count	Type
------	-------	------

4

33,256

2021 Est. daily traffic counts

Street: US Hwy 183
Cross: Osage Dr
Cross Dir: SE
Dist: 0.14 miles

Historical counts

Year	Count	Type
2005	32,000	AADT

5

31,614

2021 Est. daily traffic counts

Street: 183A Toll Road
Cross: E San Gabriel Pkwy
Cross Dir: NW
Dist: 0.19 miles

Historical counts

Year	Count	Type
2019	31,289	AADT

NOTE: Daily Traffic Counts are a mixture of actual and Estimates (*)

About RPR (Realtors Property Resource)

- Realtors Property Resource® is a wholly owned subsidiary of the National Association REALTORS®.
- RPR offers comprehensive data – including a nationwide database of 164 million properties – as well as powerful analytics and dynamic reports exclusively for members of the NAR.
- RPR's focus is giving residential and commercial real estate practitioners, brokers, and MLS and Association staff the tools they need to serve their clients.
- This report has been provided to you by a member of the NAR.



About RPR's Data

RPR generates and compiles real estate and other data from a vast array of sources. The data contained in your report includes some or all of the following:

- **Listing data** from our partner MLSs and CIEs, and related calculations, like estimated value for a property or median sales price for a local market.
- **Public records data** including tax, assessment, and deed information. Foreclosure and distressed data from public records.
- **Market conditions and forecasts** based on listing and public records data.
- **Census and employment data** from the U.S. Census and the U.S. Bureau of Labor Statistics.
- **Demographics and trends data** from Esri. The data in commercial and economic reports includes Tapestry Segmentation, which classifies U.S. residential neighborhoods into unique market segments based on socioeconomic and demographic characteristics.
- **Business data** including consumer expenditures, commercial market potential, retail marketplace, SIC and NAICS business information, and banking potential data from Esri.
- **School data and reviews** from Niche.
- **Specialty data sets** such as walkability scores, traffic counts and flood zones.



Update Frequency

- Listings and public records data are updated on a continuous basis.
- Charts and statistics calculated from listing and public records data are refreshed monthly.
- Other data sets range from daily to annual updates.

Learn more

For more information about RPR, please visit RPR's public website: <https://blog.narrpr.com>



©2020 Century 21 Real Estate LLC. All rights reserved. CENTURY 21®, the CENTURY 21 Logo and C21® are registered service marks owned by Century 21 Real Estate LLC. Century 21 Real Estate LLC fully supports the principles of the Fair Housing Act and the Equal Opportunity Act. Each office is independently owned and operated. The programs described herein are available through participating offices and do not require the listing or purchase of real estate through a franchised office as a condition of participation. This promotion is void where prohibited. A consumer purchase of a product or service may result in the seller or service provider paying a fee or commission to the affiliated sales associate or broker who obtained the sale. All products and services are provided by the applicable service provider described herein. Neither Century 21 Real Estate LLC nor any of its respective franchisees or affiliated companies is providing any product or service in connection with the product or service described herein. Not all products and services are available in all states. Century 21 Real Estate LLC and its affiliates may receive compensation or other benefits, including goods and services, provided in connection with this promotion. Each affiliated sales associate and broker is responsible for complying with any consumer disclosure laws or regulations arising from participation in this program.