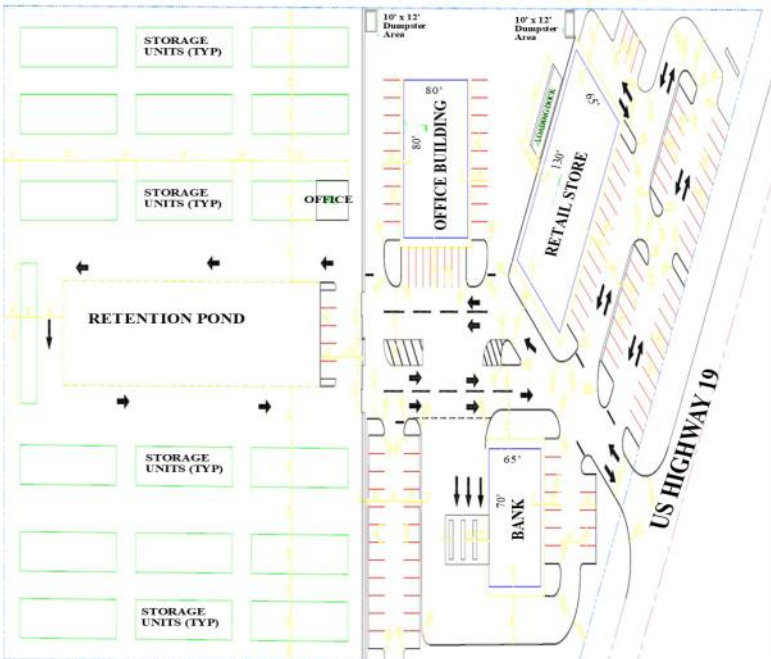


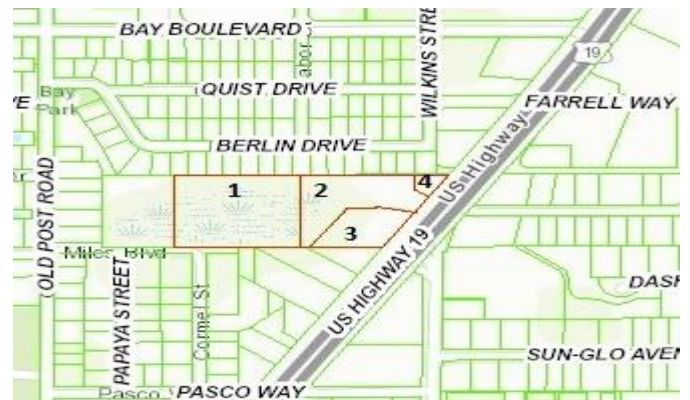
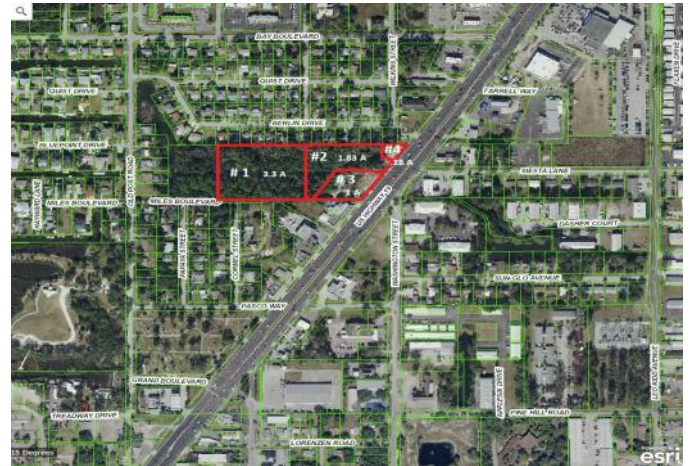
# Pasco Center Retail - Vacant Land

## 8231 US 19 North (SWC US 19/Siesta Lane)

### Port Richey, FL 34668



For Sale/Lease  
or Build to Suit.  
Up to 6.31 Acres  
(3 Acres Usable)  
Restaurant/Retail/Bank/Office



- Retail, Office, Bank, Restaurant.
- Great visibility, signage and access on busy US 19.
- 1 mile south of Gulf View Square Mall.
- Parcels #2-4 zoned C3; #1 zoned R2
- 405' Frontage on US 19.
- Traffic: 57,344 VPD on US 19
- 2024 RE Taxes: \$2,057.17

### 2025 Demographics

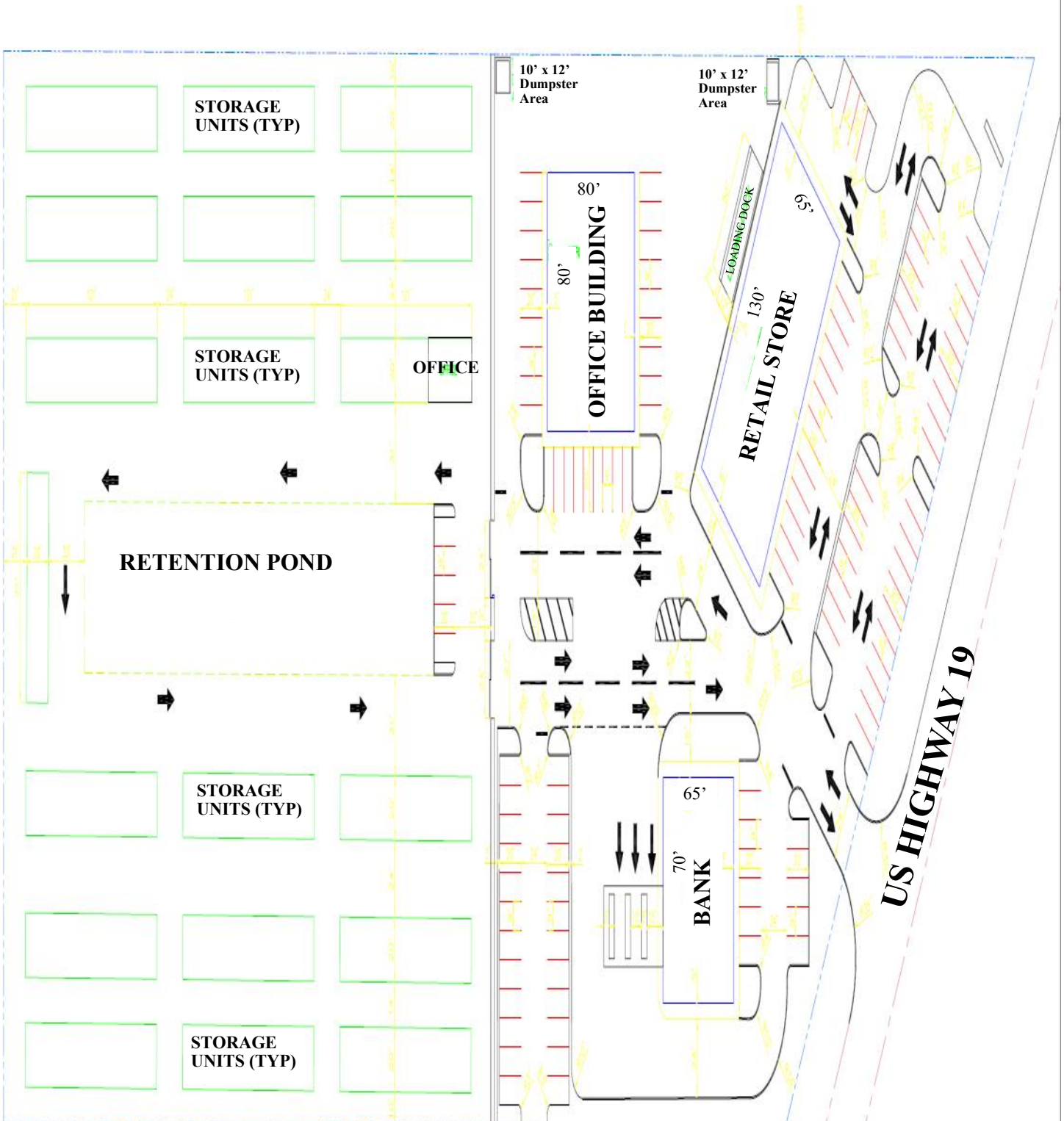
	<u>1 Mile</u>	<u>3 Miles</u>	<u>5 Miles</u>
Population	5,688	76,967	172,842
Avg. HH Income	\$65,807	\$56,629	\$59,870
Households	2,596	28,255	63,324
Employment	4,091	21,729	40,706



332 South Plant Ave.  
Tampa, FL 33606-2346  
Phone: 813-835-7747  
[www.propertypro.com](http://www.propertypro.com)

# Site Plan

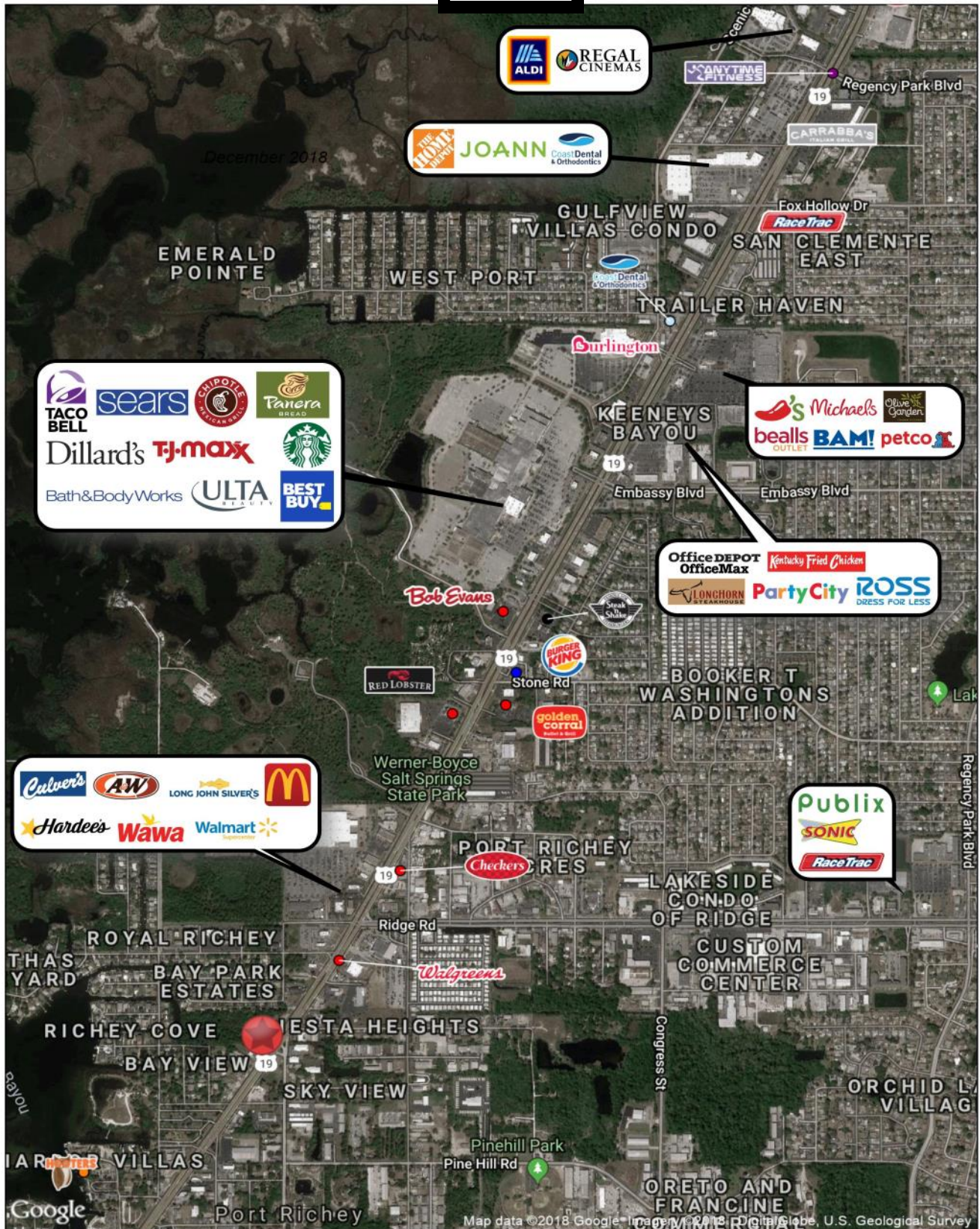
SCALE: 1"=30'



Pasco Center Retail - Vacant Land  
Port Richey, FL 34668



# Map



Pasco Center Retail - Vacant Land  
Port Richey, FL 34668