

500
E MAIN

FULL FLOORS AVAILABLE

*WHERE
CLASSIC
MEETS
MODERN*

Offering a mix of full floor
and multi-tenant plans

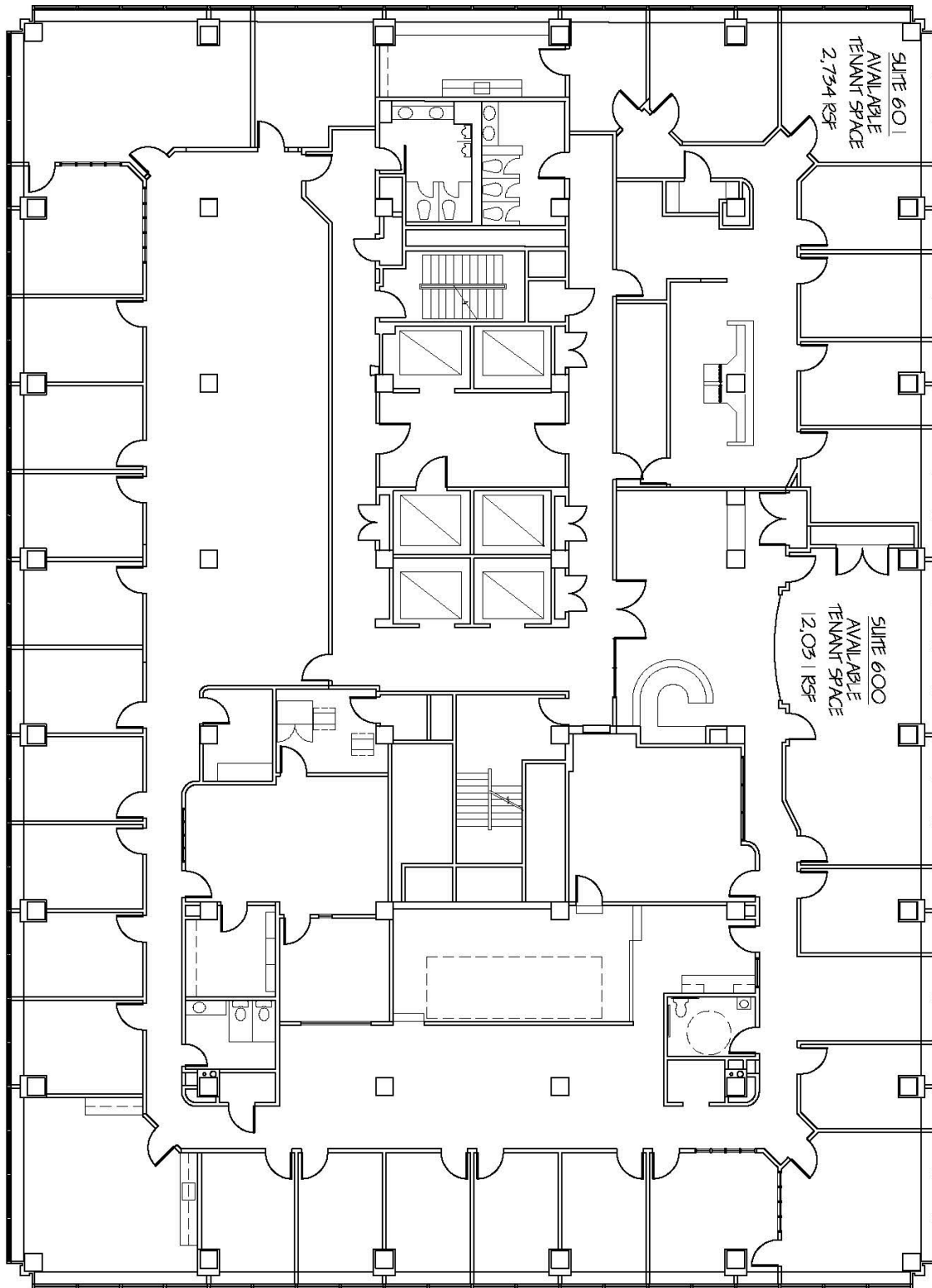
Modernized creative
spaces in Norfolk's
most desirable location



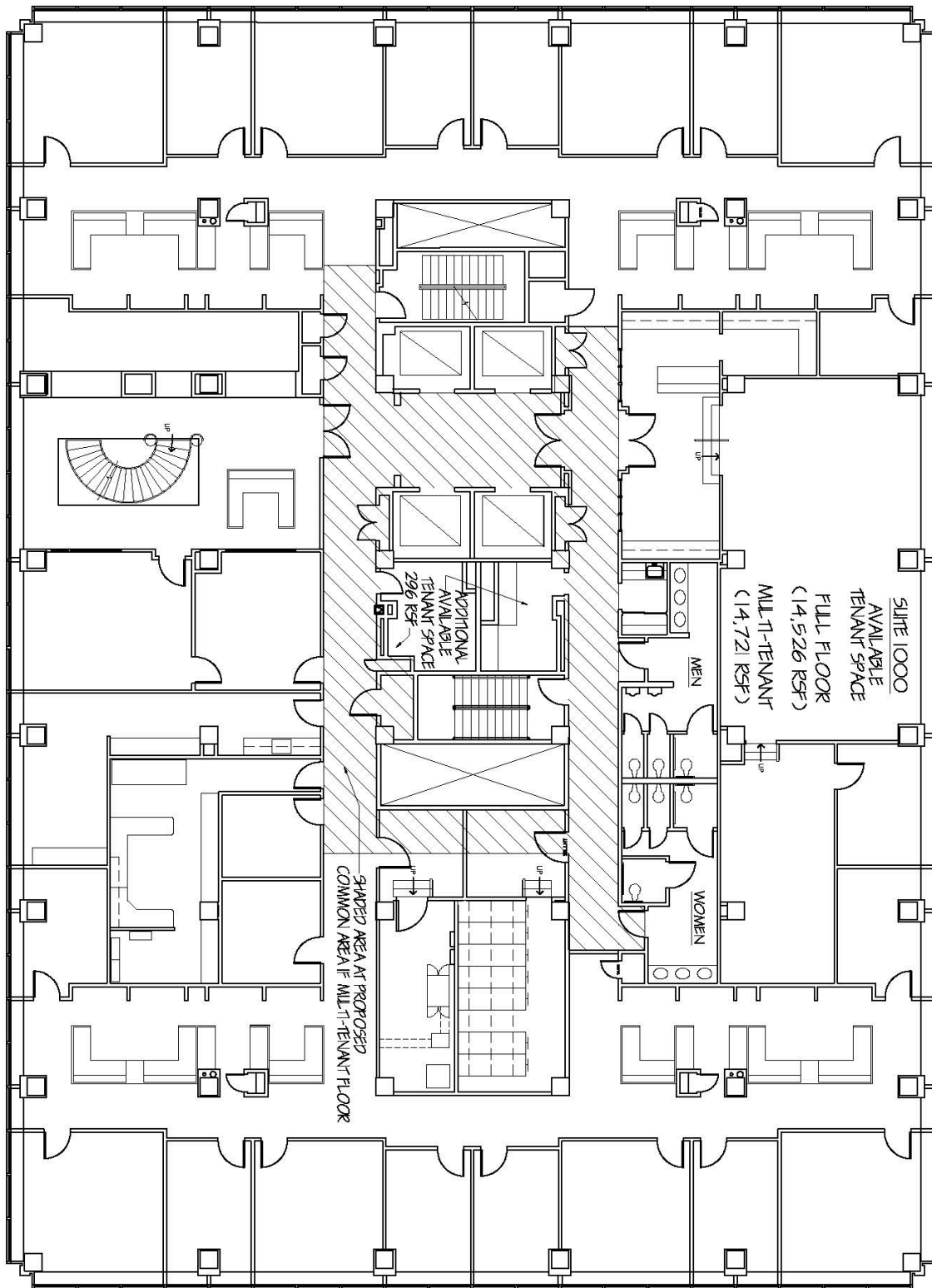
Two full floors available:



- **6th Floor:** 14,765 square feet
- **10th Floor:** 14,526 square feet



6th Floor: 14,765 RSF



10th Floor: 14,526 RSF



500
E MAIN

ENVIRONMENT

- Suite renovations showcase the iconic building and creative design
- At the heart of Norfolk's buzzing downtown
- Potential for high profile exterior signage

FLEXIBILITY

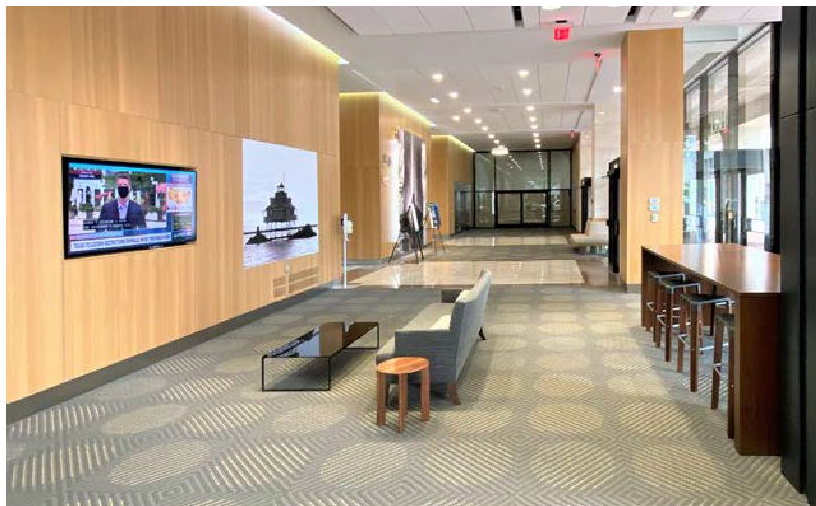
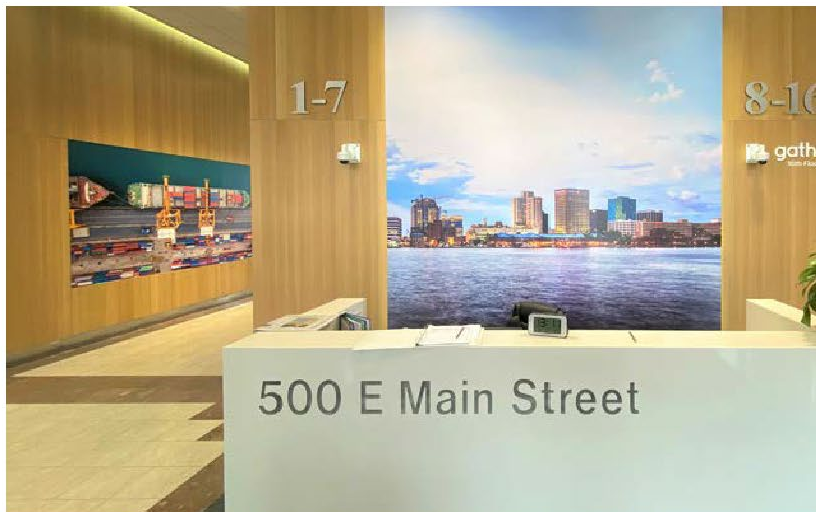
- Spaces designed with growth in mind.
- From approximately 805 s.f. – 14,860 s.f.
- Build-outs to meet your exact needs

AMENITIES

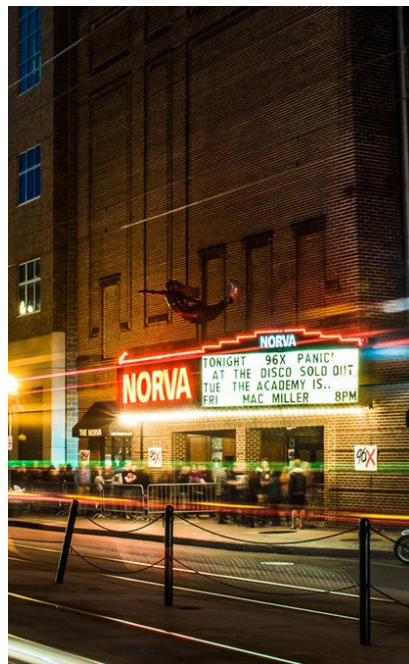
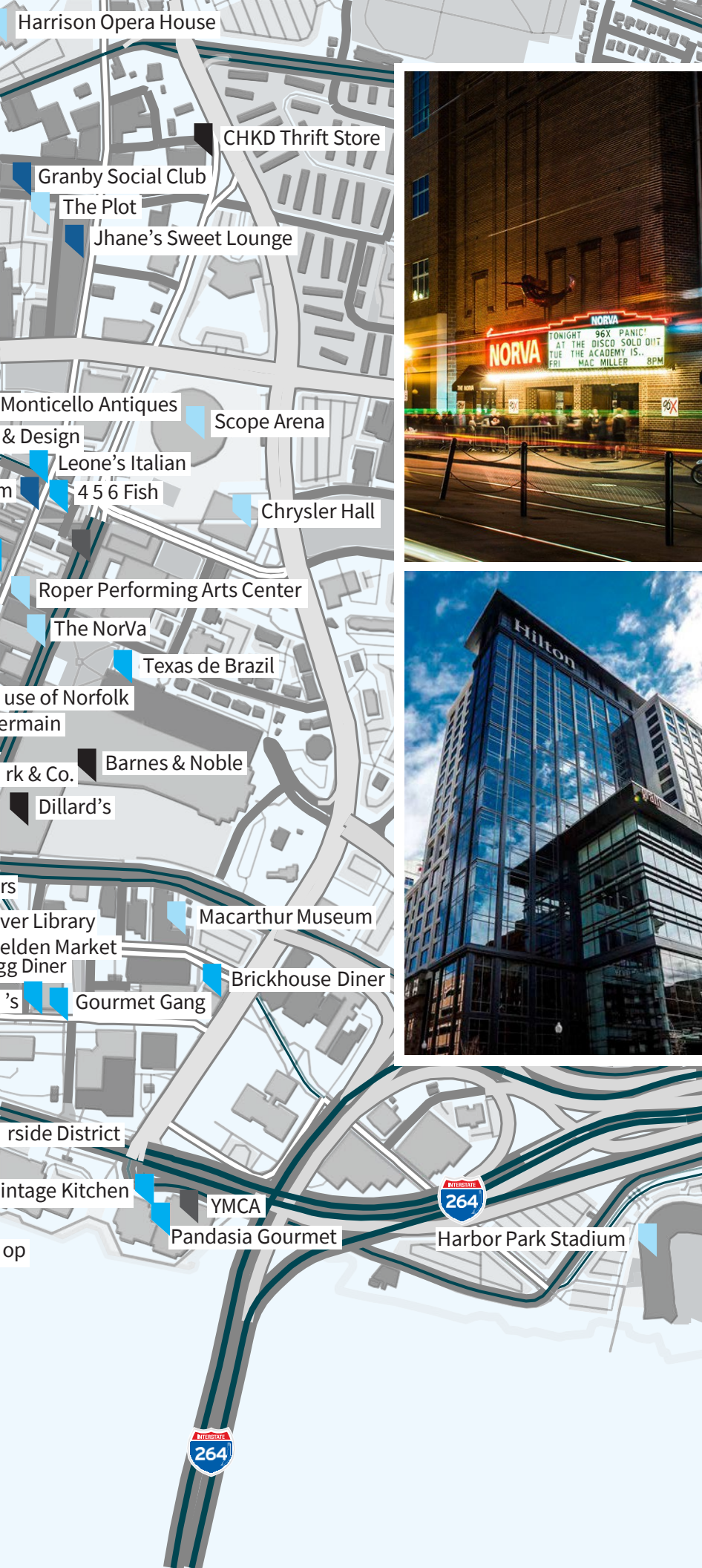
- Breakfast and lunch deli operating onsite
- Garage parking

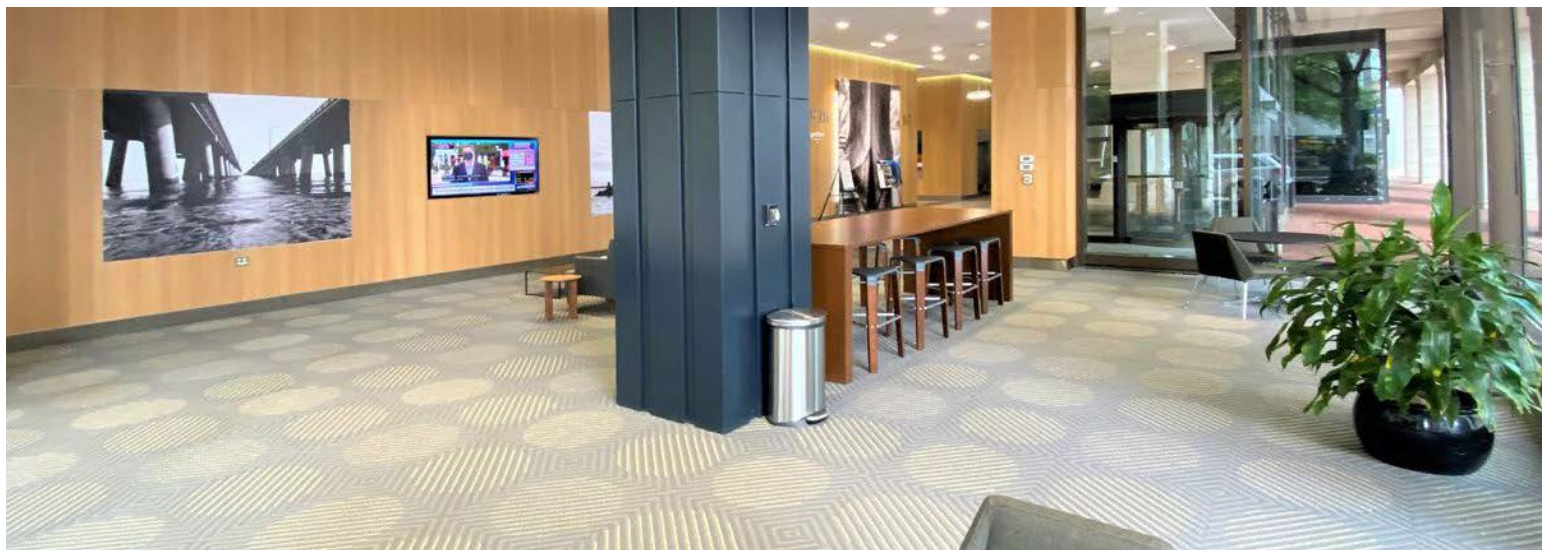
SURROUNDINGS

- Centered amongst one of the region's highest concentration of restaurants, bars, shops, hotels, and transit
- Easy access to I-264 and Downtown Tunnel









500
E MAIN

GREGG CHRISTOFFERSEN

Managing Director

+1 757 348 1477

gregg.christoffersen@jll.com

KRIS KENNEDY

Senior Vice President

+1 757 348 6098

kris.kennedy@jll.com

CHANDA CHANN

Senior Vice President

+1 757 202 9548

Chanda.chann@jll.com



gather.

500 EAST MAIN