



643 RT 211 E - Middletown, NY

643 Route 211E, Middletown, NY 10941



Travis Conley

Conley Management Group
144 E 44th St, New York, NY 10017
tconley@conleygrp.com
(646) 453-3271

643 RT 211 E - Middletown, NY

\$15.00 /SF/YR

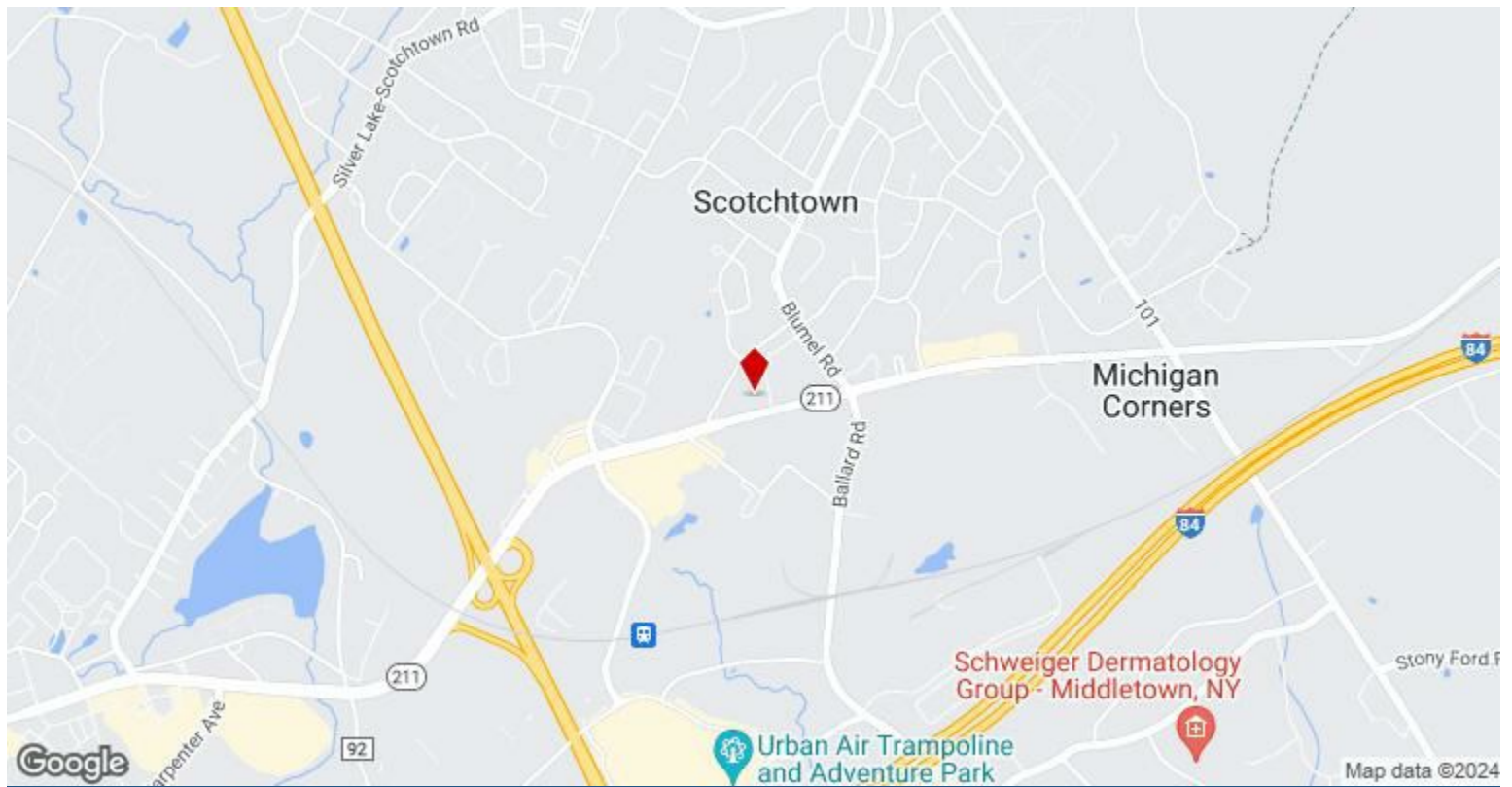


Rental Rate:	\$15.00 /SF/YR
Property Type:	Retail
Property Subtype:	Storefront Retail/Office
Gross Leasable Area:	14,283 SF
Year Built:	1994
Cross Streets:	Imperial Park Dr
Walk Score ®:	48 (Car-Dependent)
Rental Rate Mo:	\$1.25 /SF/MO

1st Floor Ste #3

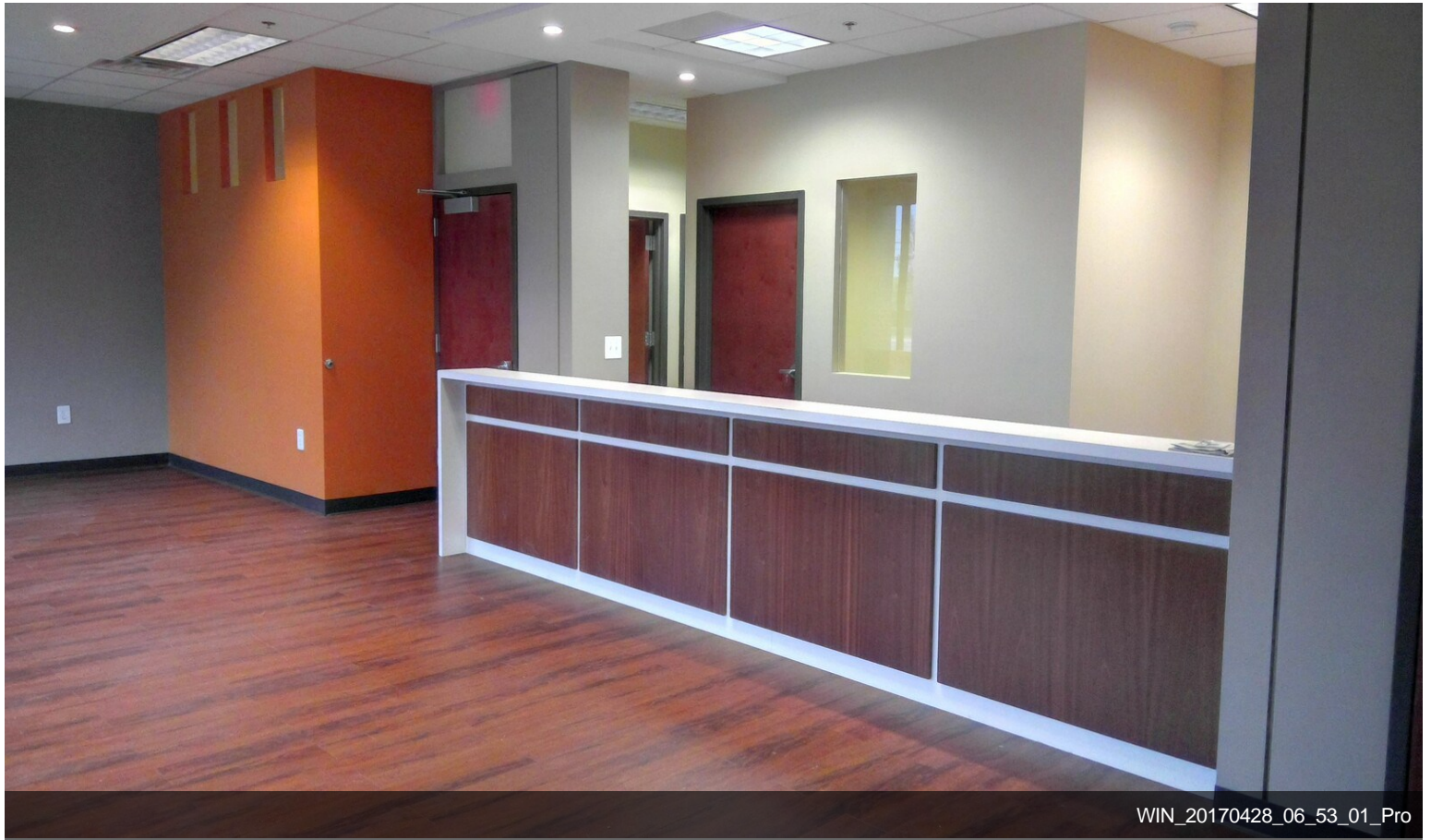
Space Available	1,502 SF
Rental Rate	\$15.00 /SF/YR
Date Available	Now
Service Type	Triple Net (NNN)
Built Out As	Standard Office
Space Type	Relet
Space Use	Office/Medical
Lease Term	Negotiable

643 RT 211 E, Middletown, NY is a unique property with a professional atmosphere. The building resides on the well-developed commercial corridor and provides Tenants with exceptional signage exposure on the property's pylon and monument signage structures placed along Route 211 east. Suite # 3 has a dedicated entrance door and vestibule providing direct access to suite from the parking lot. The space is easily identified in the front of building with its floor to ceiling exterior glass facade. The space is currently built out as a professional space with 3 private offices, conference room, reception, and large open work area. The space could be quickly modified for medical or alternate uses. The Landlord's affiliate design + build firm will help interested tenants through lease process and can assist with any design and construction modifications required for Tenant's use to deliver space turn key.



643 Route 211E, Middletown, NY 10941

Property Photos



Property Photos



Building Photo



Interior Photo

Property Photos



Building Photo



Interior Photo