



SHORELINE SCIENCE CENTER

130-150 SHORELINE DRIVE
REDWOOD CITY, CA

GI PARTNERS

CBRE

Building Specs



TWO
BUILDING
CAMPUS



130 SHORELINE
±26,967 SF



150 SHORELINE
±54,602 SF



BLDG POWER
2,000 amps



EMERGENCY GENERATOR
60 KW



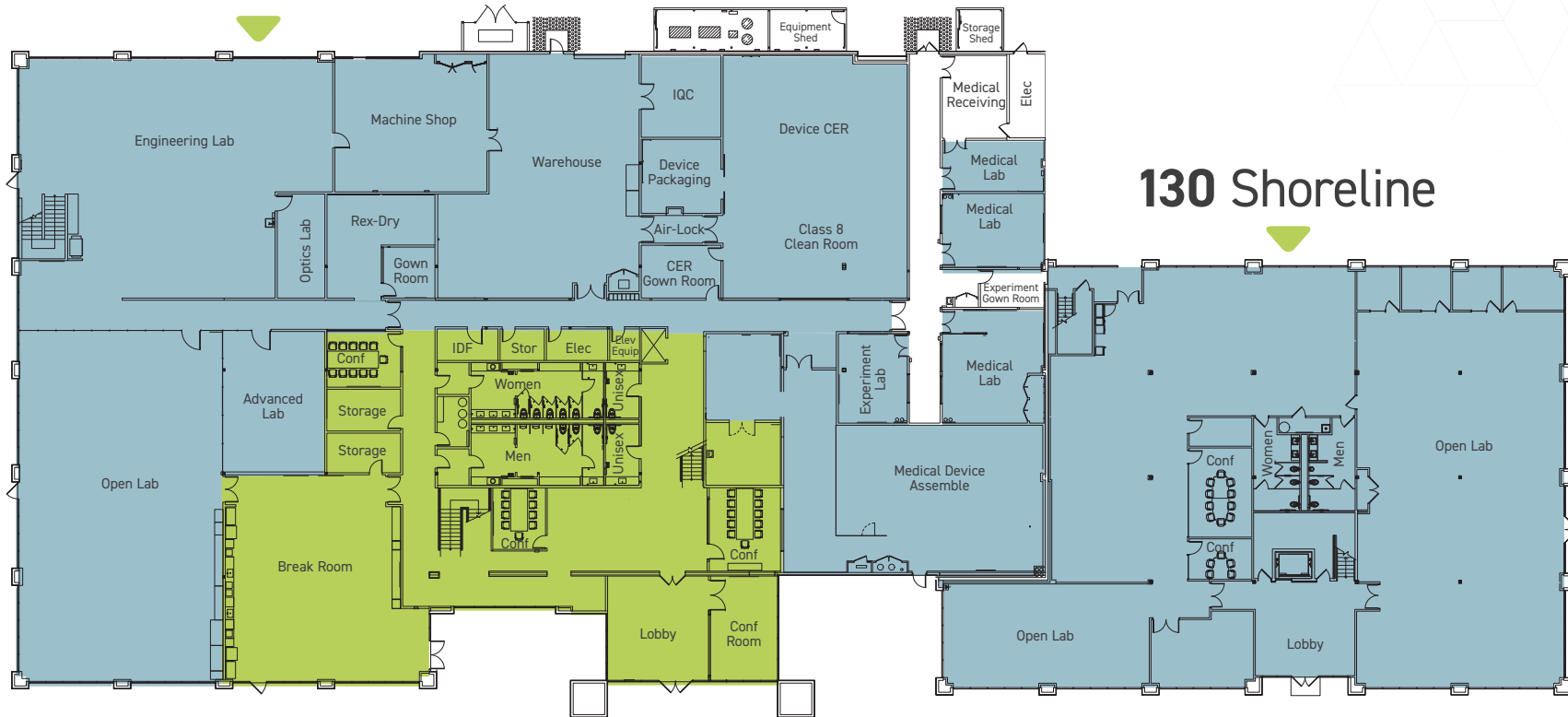
PARKING RATIO
3.2 / 1,000 SF



1st Floor Plan

- ▶ Open / Flexible Floorplate
- ▶ ISO 8 Clean Room
- ▶ 60 KW Backup Generator
- ▶ All Hands / Break Room
- ▶ 2 Grade-Level Doors

150 Shoreline



2nd Floor Plan

150 Shoreline

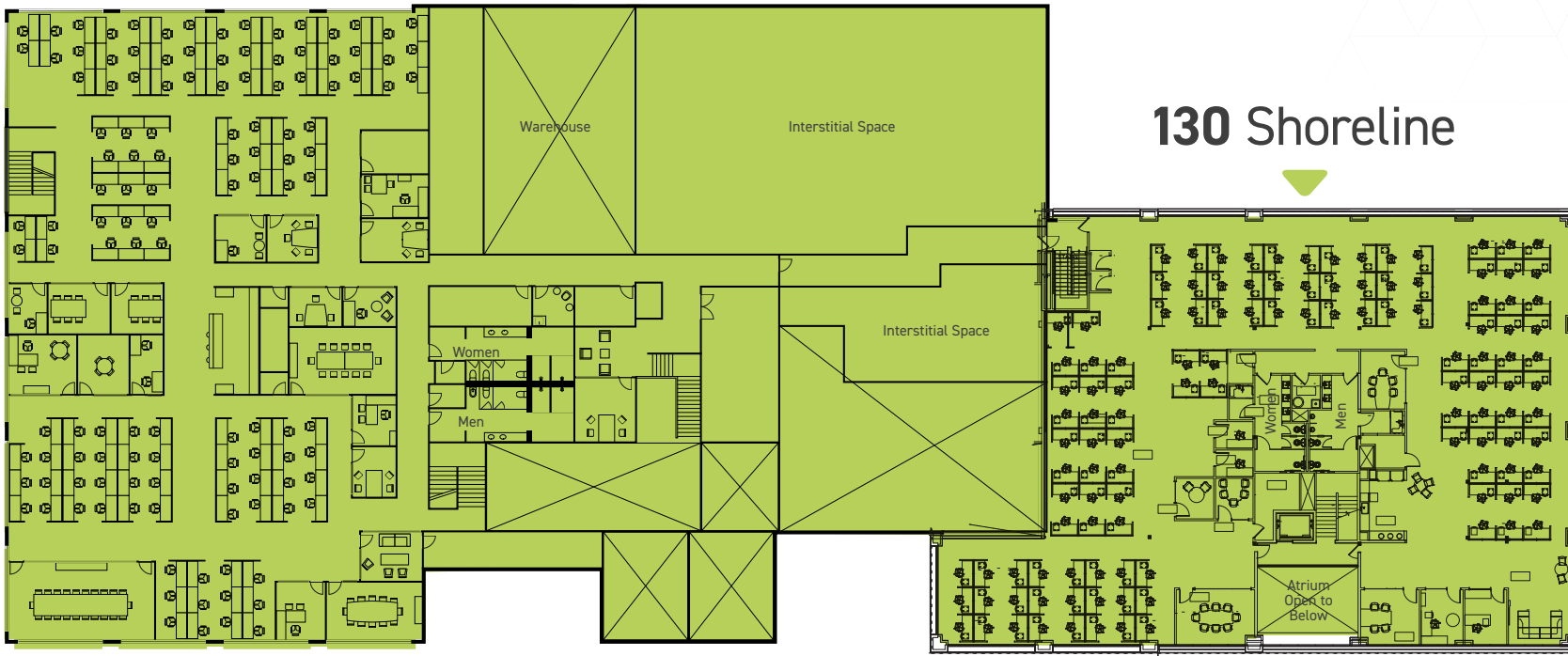
150 SHORELINE

- 125 Workstations
- 18 Meeting/Huddle Rooms
- 6 Conference Rooms
- Break Area

130 SHORELINE

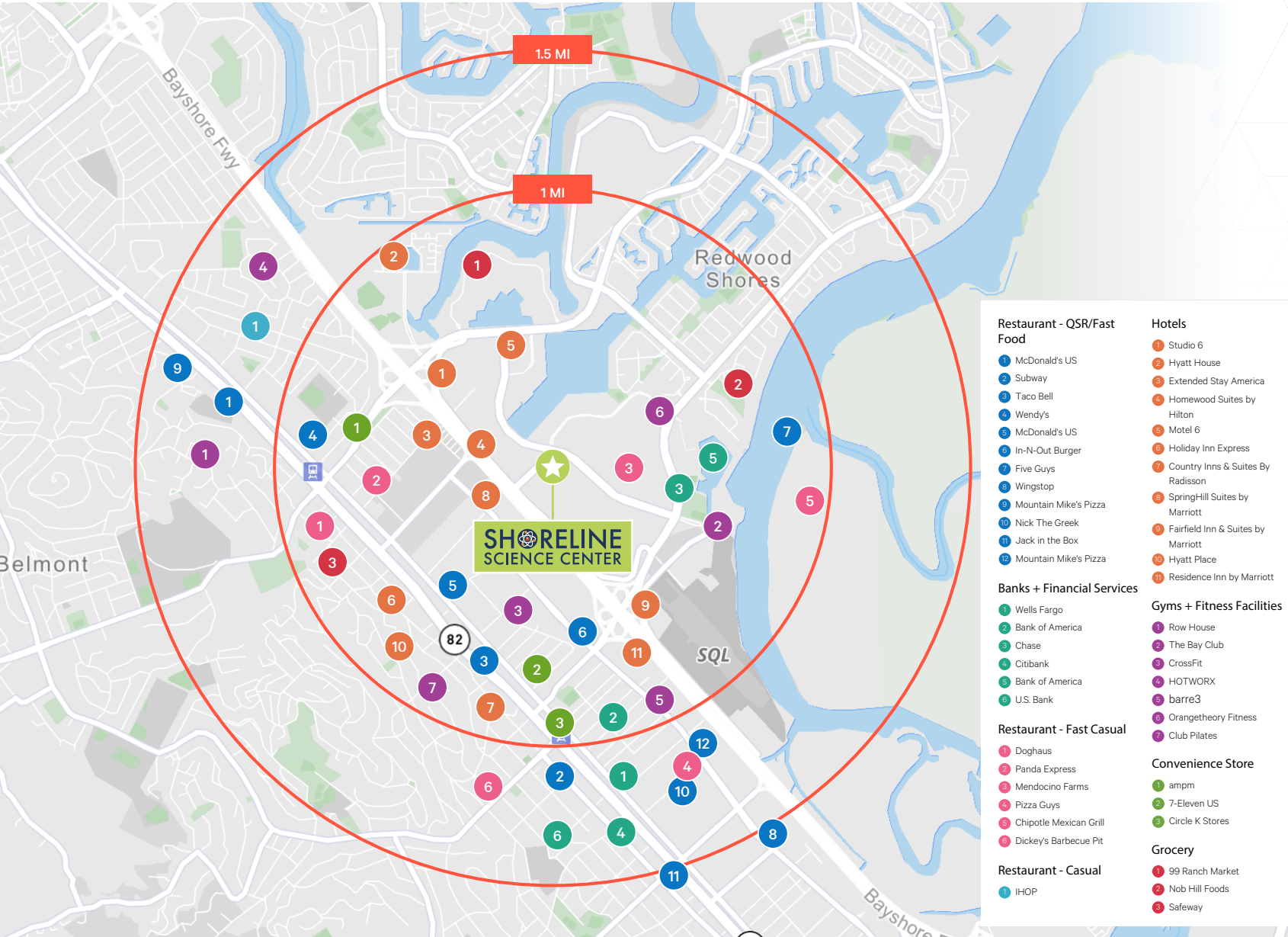
- 108 Workstations
- 2 Meeting/Huddle Rooms
- 7 Conference Rooms
- Break Area

130 Shoreline



■ Lab ■ Office

Amenities Map



Restaurant - QSR/Fast Food

- 1 McDonald's US
- 2 Subway
- 3 Taco Bell
- 4 Wendy's
- 5 McDonald's US
- 6 In-N-Out Burger
- 7 Five Guys
- 8 Wingstop
- 9 Mountain Mike's Pizza
- 10 Nick The Greek
- 11 Jack in the Box
- 12 Mountain Mike's Pizza

Banks + Financial Services

- 1 Wells Fargo
- 2 Bank of America
- 3 Chase
- 4 Citibank
- 5 Bank of America
- 6 U.S. Bank

Restaurant - Fast Casual

- 1 Doghaus
- 2 Panda Express
- 3 Mendocino Farms
- 4 Pizza Guys
- 5 Chipotle Mexican Grill
- 6 Dickey's Barbecue Pit

Restaurant - Casual

- 1 IHOP

Hotels

- 1 Studio 6
- 2 Hyatt House
- 3 Extended Stay America
- 4 Homewood Suites by Hilton
- 5 Motel 6
- 6 Holiday Inn Express
- 7 Country Inns & Suites By Radisson
- 8 SpringHill Suites by Marriott
- 9 Fairfield Inn & Suites by Marriott
- 10 Hyatt Place
- 11 Residence Inn by Marriott

Gyms + Fitness Facilities

- 1 Row House
- 2 The Bay Club
- 3 CrossFit
- 4 HOTWORX
- 5 barre3
- 6 Orangetheory Fitness
- 7 Club Pilates

Convenience Store

- 1 amp
- 2 7-Eleven US
- 3 Circle K Stores

Grocery

- 1 99 Ranch Market
- 2 Nob Hill Foods
- 3 Safeway

Transit Map



SHORELINE SCIENCE CENTER

130-150 SHORELINE DRIVE
REDWOOD CITY, CA



CONTACTS

Gregg Domanico

Vice Chairman

+1 415 215 5218

gregg.domanico@cbre.com

Lic. 00996779

Michael Domanico

Executive Vice President

+1 650 430 1464

michael.domanico@cbre.com

Lic. 01944774

Gio Haughton

Senior Associate

+1 650 387 1197

gio.haughton@cbre.com

Lic. 02107010

GI PARTNERS **CBRE**

© 2024 CBRE, Inc. All rights reserved. This information has been obtained from sources believed reliable but has not been verified for accuracy or completeness. CBRE, Inc. makes no guarantee, representation or warranty and accepts no responsibility or liability as to the accuracy, completeness, or reliability of the information contained herein. You should conduct a careful, independent investigation of the property and verify all information. Any reliance on this information is solely at your own risk. CBRE and the CBRE logo are service marks of CBRE, Inc. All other marks displayed on this document are the property of their respective owners, and the use of such marks does not imply any affiliation with or endorsement of CBRE. Photos herein are the property of their respective owners. Use of these images without the express written consent of the owner is prohibited.