



## Medical office space in Humble

- Adjacent to Memorial Hermann Northeast Hospital
- Unparalleled access to Highway 59, Sam Houston Tollway and FM 1960
- Ample Parking
- Minutes to George Bush Intercontinental Airport (IAH)
- Minutes from numerous restaurants, hotels and shopping options

**Get more  
information**

**Mike Martin**  
Senior Vice President  
+1 713 209 5710

1000 Main Street, Suite 2400 | Houston, TX 77002

[avisonyoung.com](http://avisonyoung.com)



Lease Information

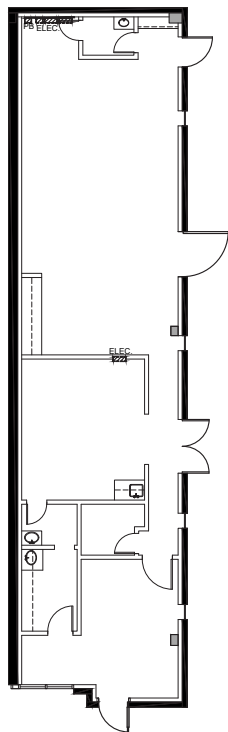
Lease Type:	NNN	Lease Term:	Negotiable
Total Space:	1,177 - 1,878 SF	Lease Rate:	\$17.00 SF/yr

Available Spaces

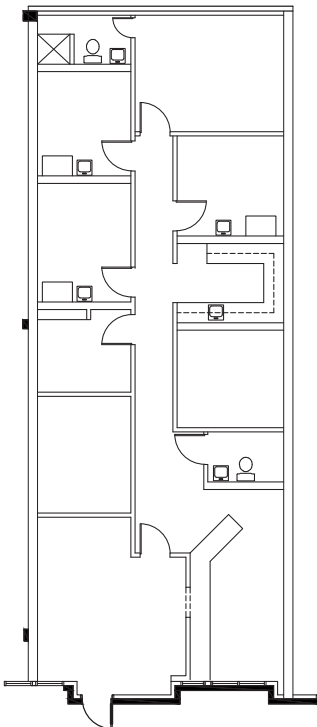
Suite	Rate	Space Size	Tenant
Suite201	\$17.00 SF/yr	1,177 SF	Available
Suite 203	\$17.00 SF/yr	1,862 SF	Available
Suite 205	\$17.00 SF/yr	1,878 SF	Available



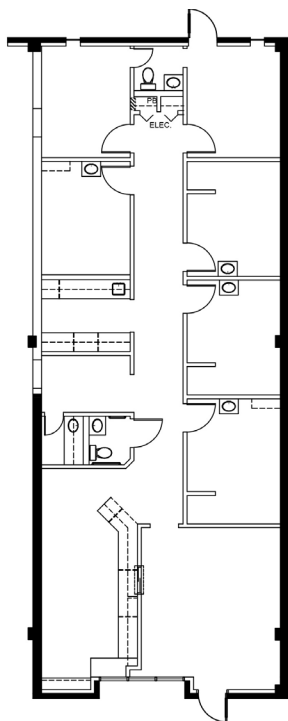
**Mike Martin**  
Senior Vice President  
+1 713 209 5710  
mike.martin@avisonyoung.com



Suite 201 | 1,177 sf



Suite 203 | 1,862 sf



Suite 205 | 1,878 sf

**AVISON  
YOUNG**

**Mike Martin**  
Senior Vice President  
+1 713 209 5710  
[mike.martin@avisonyoung.com](mailto:mike.martin@avisonyoung.com)