

1909 KAHAKAI DRIVE

HONOLULU, HAWAII



1909KAHAKAIDR.COM



COLDWELL BANKER | REALTY

 1909 KAHAKAI DRIVE HONOLULU, HAWAII

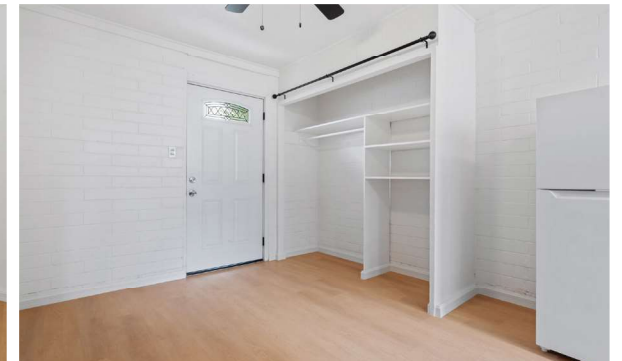
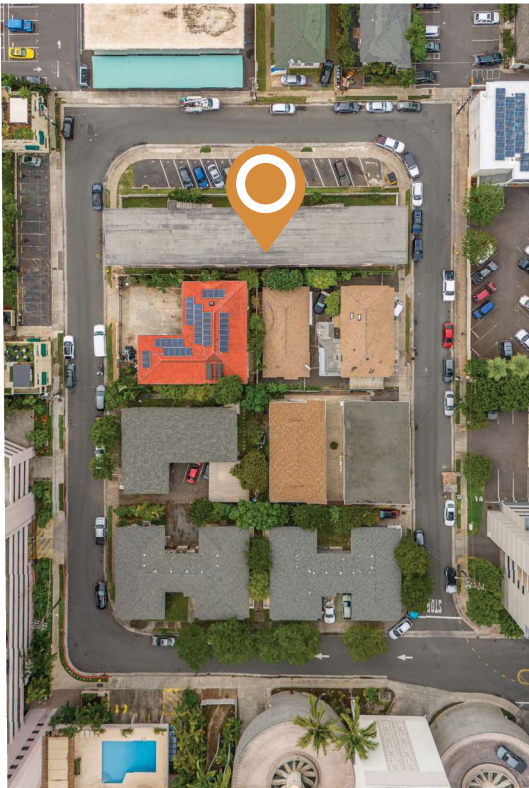


YES, this is that great three-story building at the end of the circle you noticed when visiting the condominiums on Kahakai Drive. A quiet neighborhood with sidewalks, Kahakai is located along the tree-lined Ala Wai Canal bordering Waikiki, next to the Hawaii Convention Center. A convenient traffic light on Atkinson Drive leads to Ala Moana Shopping Center, Ala Moana Beach Park, and the Ala Wai Yacht Harbor. This concrete building has 33 individually-metered apartments (nine 1-bds and 24 studios), and 14 parking stalls, on 11,728 sqft of land zoned A-2. There's vinyl fencing, garden landscaping, and an on-site laundry



UNIT 1

▼The building is the top of the block with sidewalks and extra parking around.





UNIT 20



Total Units 33 (9 studios, 24 one bedrooms), 14 Parking, Land Sq.ft. 11,728

LISTED AT \$9,150,000



Listed by
Douglas Shanefield
REALTOR-ASSOCIATE®
RS-54692
Vice President
Projects Director

808.551.5551
DougS@cbrealty.com



Co-Listed by
Andrew Leitheiser
REALTOR®
RB-22557

808.781.5378
Andrew.Leitheiser@cbrealty.com



Co-Listed by
Atsuko Barth
アツコ バース
REALTOR-ASSOCIATE®
RS-79191

808.640.8286
atsuko.barth@cbrealty.com

