



**FLEXIBLE HIGH-QUALITY OFFICE SPACE SUPPORTING
DYNAMIC BUSINESS OPERATIONS**

3675 PRECISION DRIVE LOVELAND, CO



 **CUSHMAN &
WAKEFIELD**

FOR LEASE

3675 PRECISION DRIVE LOVELAND, CO



About the Building

Discover exceptional office space in the heart of Northern Colorado at **3675 Precision Drive**, offering up to 50,000 square feet of flexible, high-quality workspace. Built in 2009, this modern single-story building is designed to support dynamic business operations with a full build-out and divisible space options. Strategically located in Loveland's thriving Centerra business park, this property provides easy access to major transportation routes and is just minutes from over 25 restaurants, hotels, and retail shops, making it ideal for both employees and clients. The building features high-end interior finishes, 400 surface parking spaces, and an outdoor patio, creating a comfortable and professional environment.



JASON ELLS, CCIM
Senior Director
+1 970 231 7513
jason.ells@cushwake.com

772 Whalers Way, Suite 200
Fort Collins, CO 80525
+1 970 776 3900
cushmanwakefield.com



- Power: Abundant
- Backup generator owned by Constant Contact, located at the NW corner of the building
- HVAC Central rooftop HVAC with VAV boxes throughout

.....



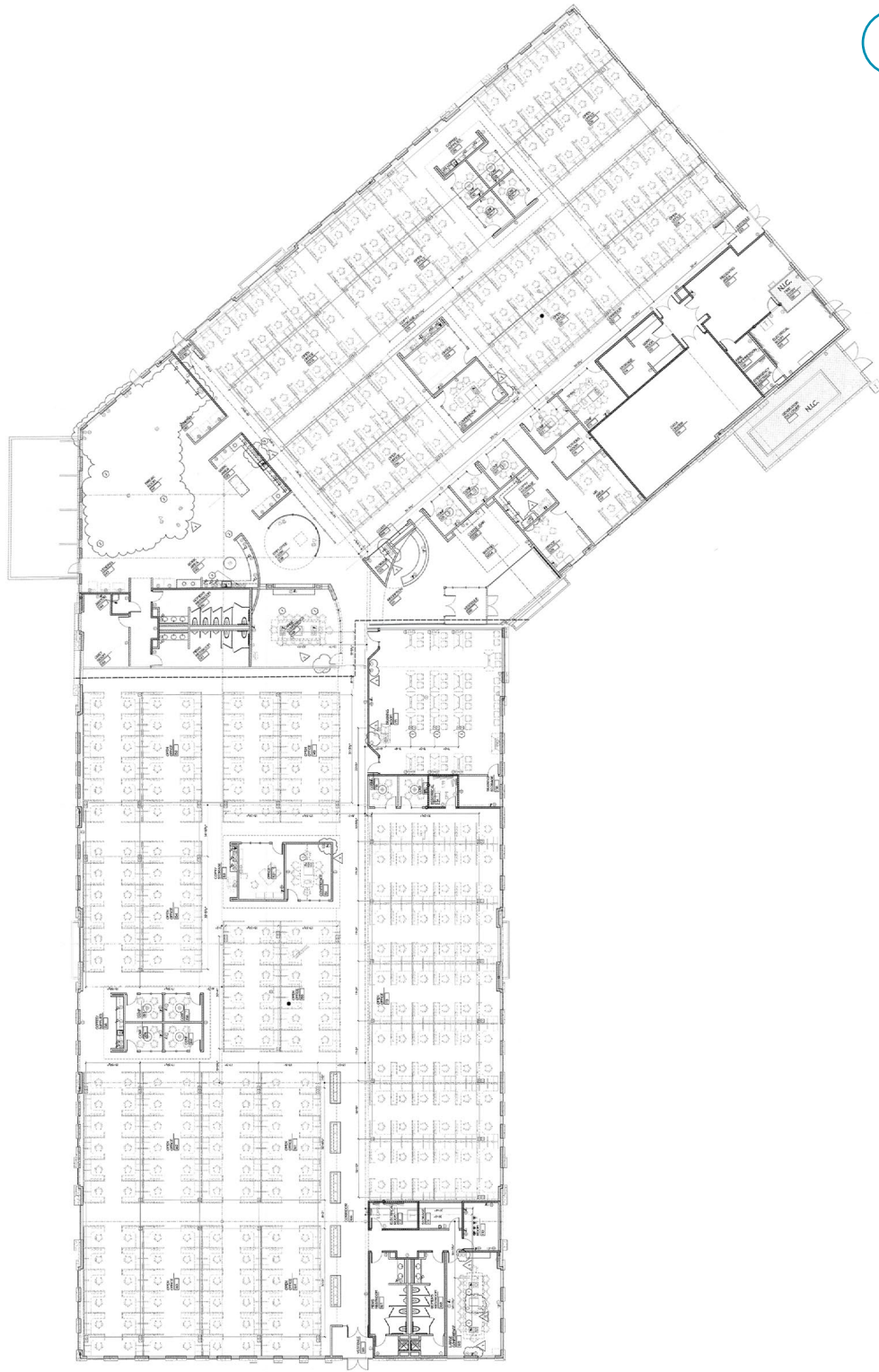
- Sprinklers: Yes
- Redundant Fiber: Comcast & Level 3
- Ceiling Height Elevated 12' ceilings
- Roof Preventively sealed in 2025

.....



- Parking Ratio: 8: 1,000 SF
- Signage Monument could be added to the east side. Building signage subject to review

FLOOR PLAN



JASON ELLS, CCIM
Senior Director
+1 970 231 7513
jason.ells@cushwake.com

772 Whalers Way, Suite 200
Fort Collins, CO 80525
+1 970 776 3900
cushmanwakefield.com

FOR LEASE

3675 PRECISION DRIVE LOVELAND, CO



©2025 Cushman & Wakefield. All rights reserved. The information contained in this communication is strictly confidential. This information has been obtained from sources believed to be reliable but has not been verified. NO WARRANTY OR REPRESENTATION, EXPRESS OR IMPLIED, IS MADE AS TO THE CONDITION OF THE PROPERTY (OR PROPERTIES) REFERENCED HEREIN OR AS TO THE ACCURACY OR COMPLETENESS OF THE INFORMATION CONTAINED HEREIN, AND SAME IS SUBMITTED SUBJECT TO ERRORS, OMISSIONS, CHANGE OF PRICE, RENTAL OR OTHER CONDITIONS, WITHDRAWAL WITHOUT NOTICE, AND TO ANY SPECIAL LISTING CONDITIONS IMPOSED BY THE PROPERTY OWNER(S). ANY PROJECTIONS, OPINIONS OR ESTIMATES ARE SUBJECT TO UNCERTAINTY AND DO NOT SIGNIFY CURRENT OR FUTURE PROPERTY PERFORMANCE.