

us bank

ONE SEVENTY



SOUTH MAIN

NOW LEASING



CUSHMAN & WAKEFIELD

# ONE SEVENTY SOUTH MAIN

is located in the center of downtown Salt Lake City. The building features unique architecture and is angled to capture dramatic views of the Wasatch Mountains and the Great Salt Lake.

The building is located within easy walking distance to several downtown attractions including - The City Creek Center, Eccles Theater, Capital Theater, UTA Trax stations, Gallivan Plaza and several area restaurants.

## BUILDING FEATURES

- On-site property management and 24 hour security
- Upgraded locker rooms and showers
- 2/1,000 USF parking ratio
- On-site parking and electrical charging stations
- Crown signage available
- Monument signage available
- **BORP:** Building Occupancy Resumption Program. 170 South Main is the first building in Utah to officially implement a BORP plan.
- Two on-site restaurants: Siegfried's Delicatessen & Mi Buena Vida Express
- On-Site UPS Store
- Walking distance to City Creek Center, Eccles Theater, & UTA Trax

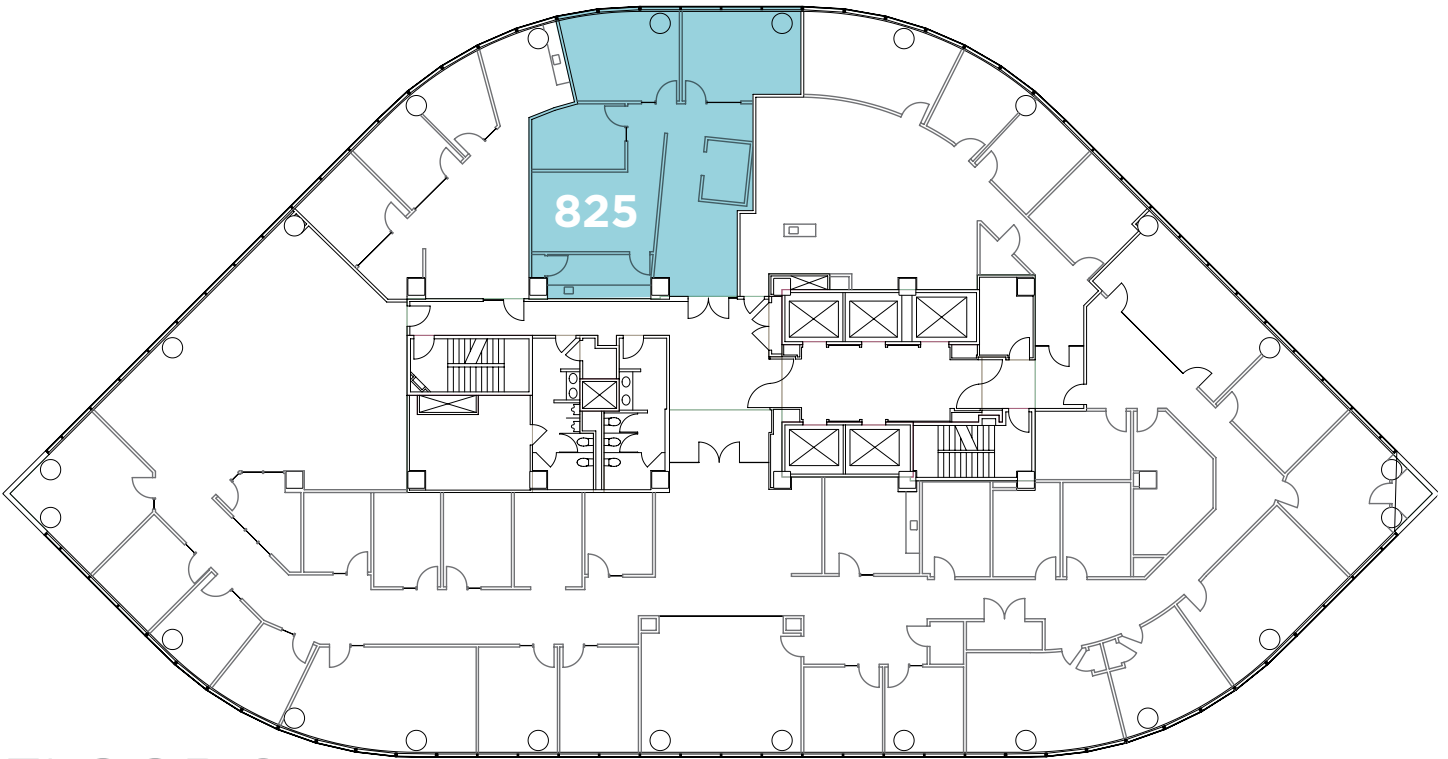


## AMENITY SPACE

- 100 person training room
- Full-service kitchen
- Tenant lounge/gaming area
- Quiet room/library
- Indoor bike storage
- Tenant storage space

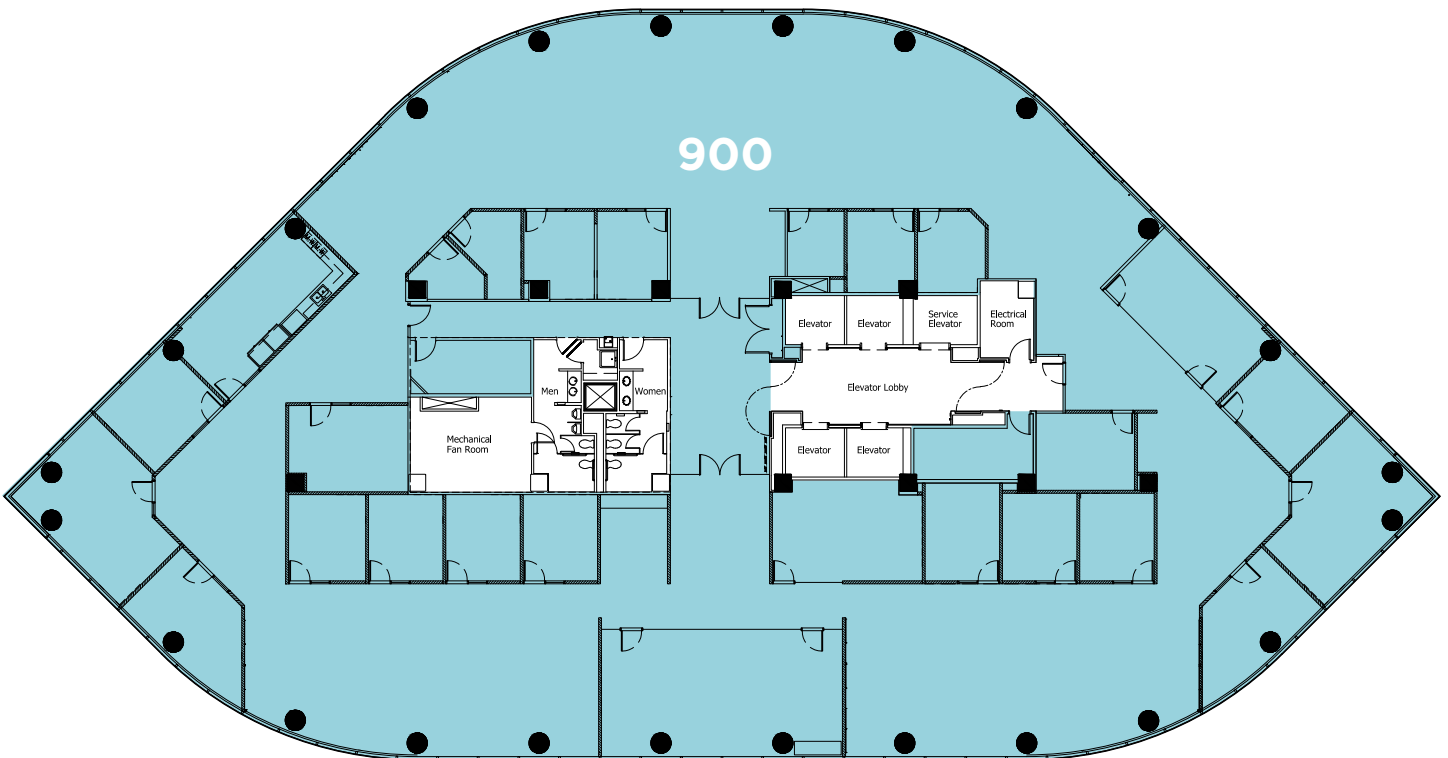






## FLOOR 8

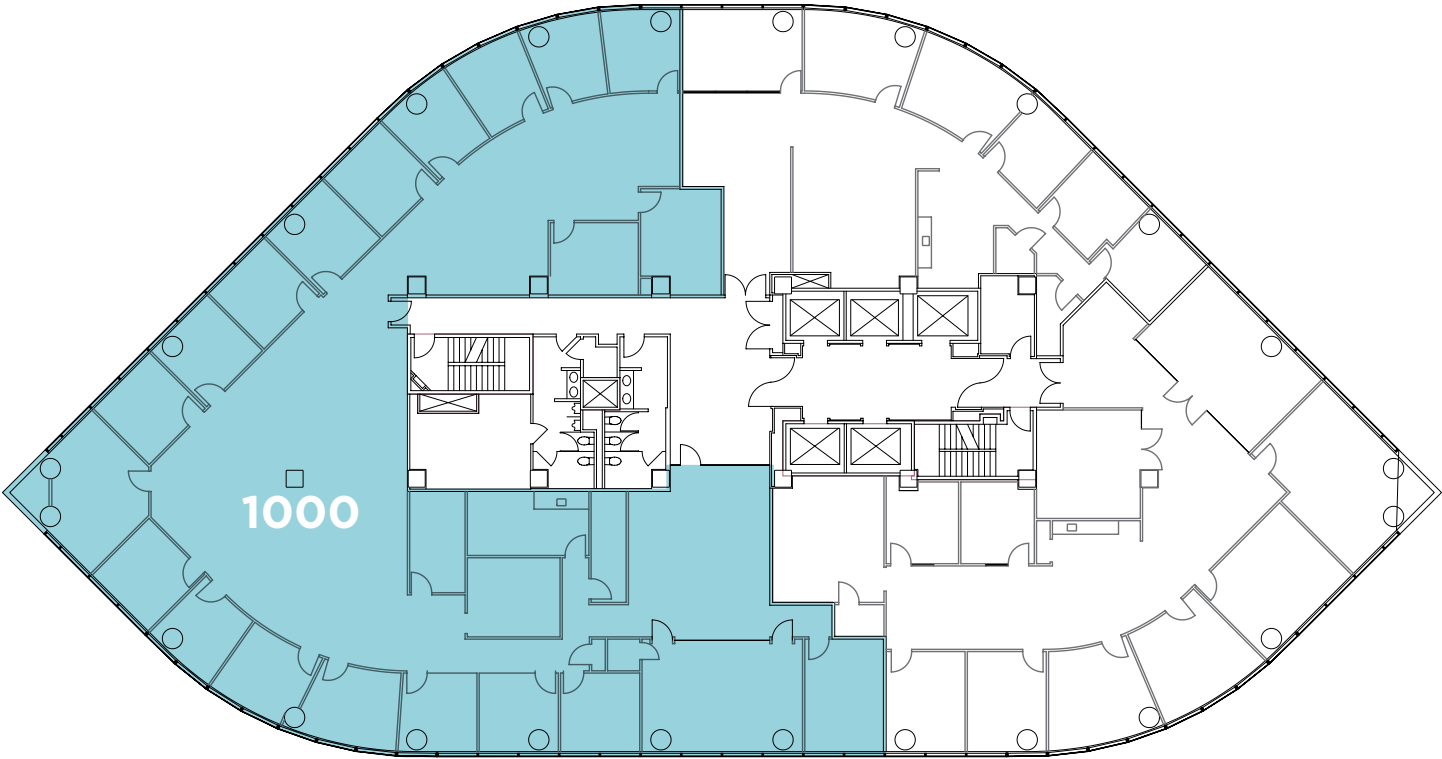
SUITE	SIZE	AVAILABILITY
825	1,691 RSF	9/1/2024



## FLOOR 9

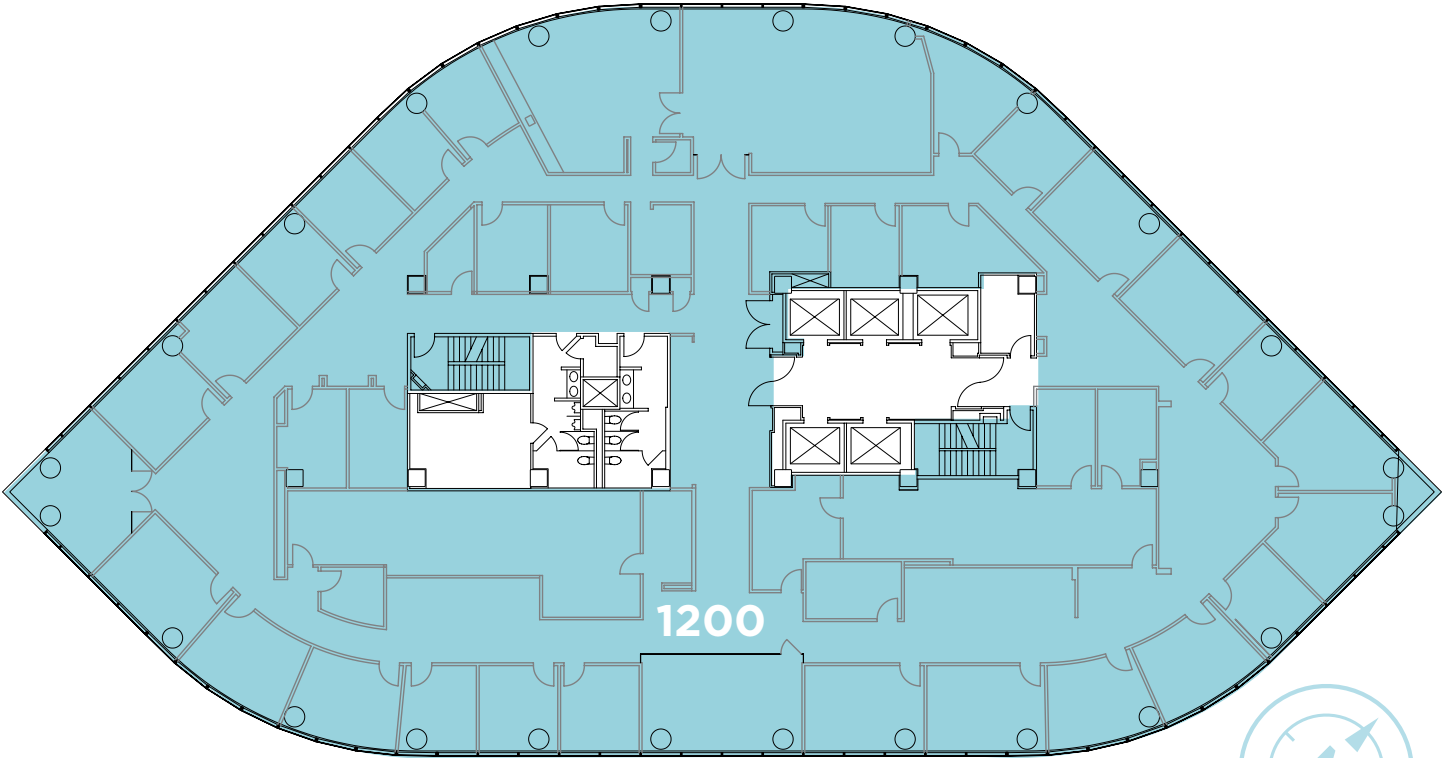
SUITE	SIZE	AVAILABILITY
900	16,959 RSF	Immediately





# FLOOR 10

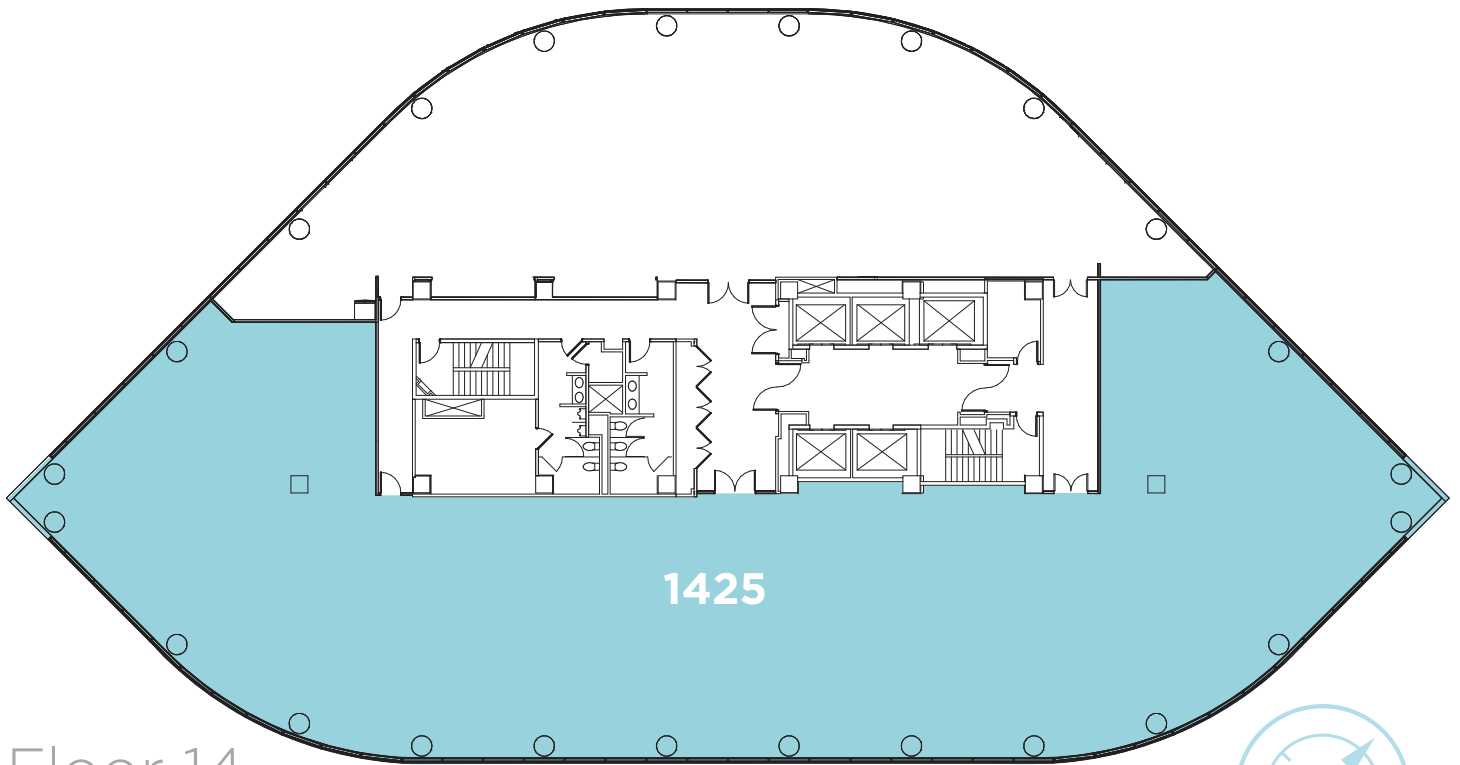
SUITE	SIZE	AVAILABILITY
1000	9,167 RSF	2/1/2025



# Floor 12

SUITE	SIZE	AVAILABILITY
1200	17,354 RSF	Immediately





## Floor 14



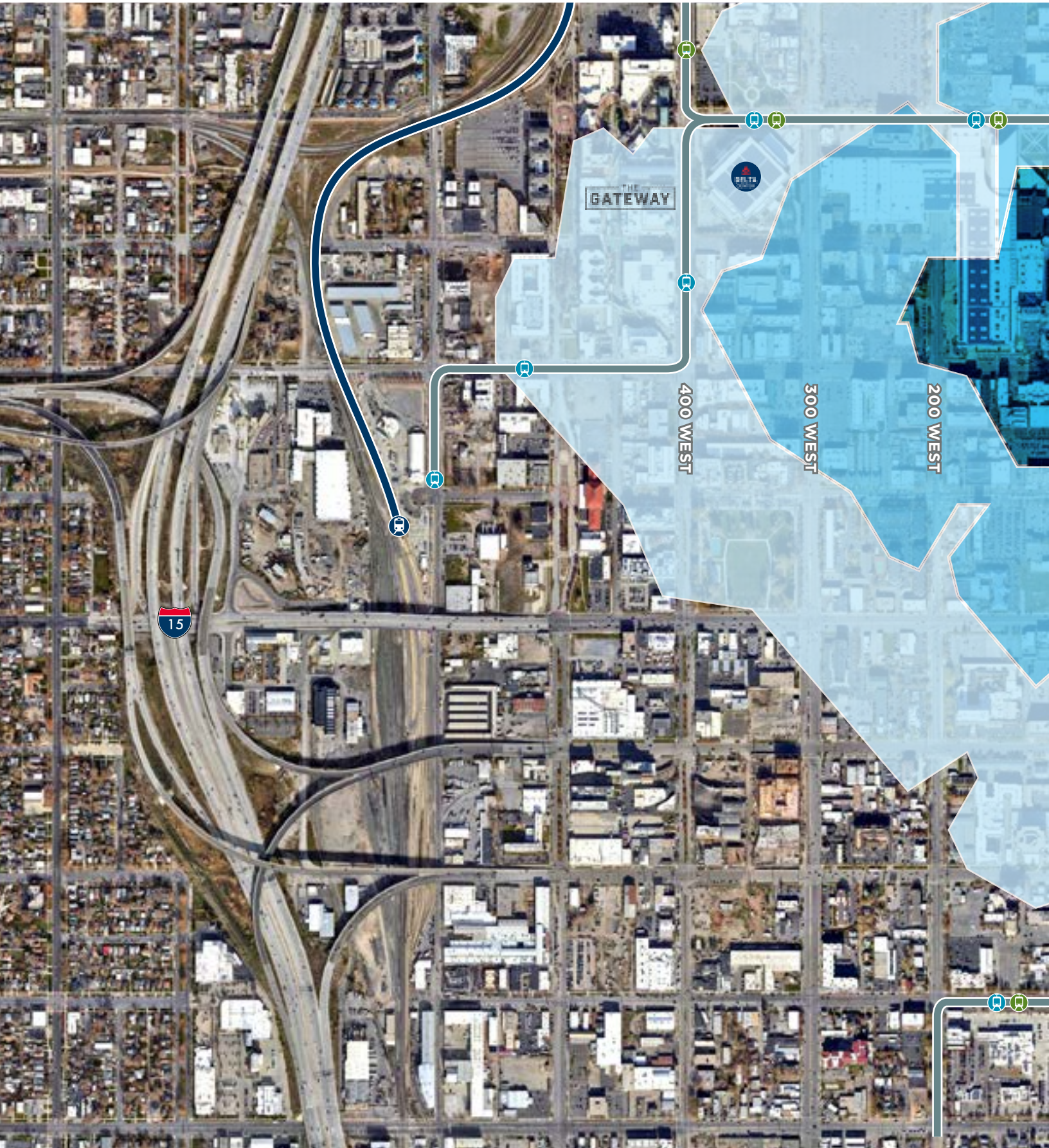
SUITE	SIZE	AVAILABILITY
1425	12,168 RSF	Immediately



170 SOUTH MAIN STREET // SALT LAKE CITY, UTAH

CROWN SIGNAGE  
AVAILABLE

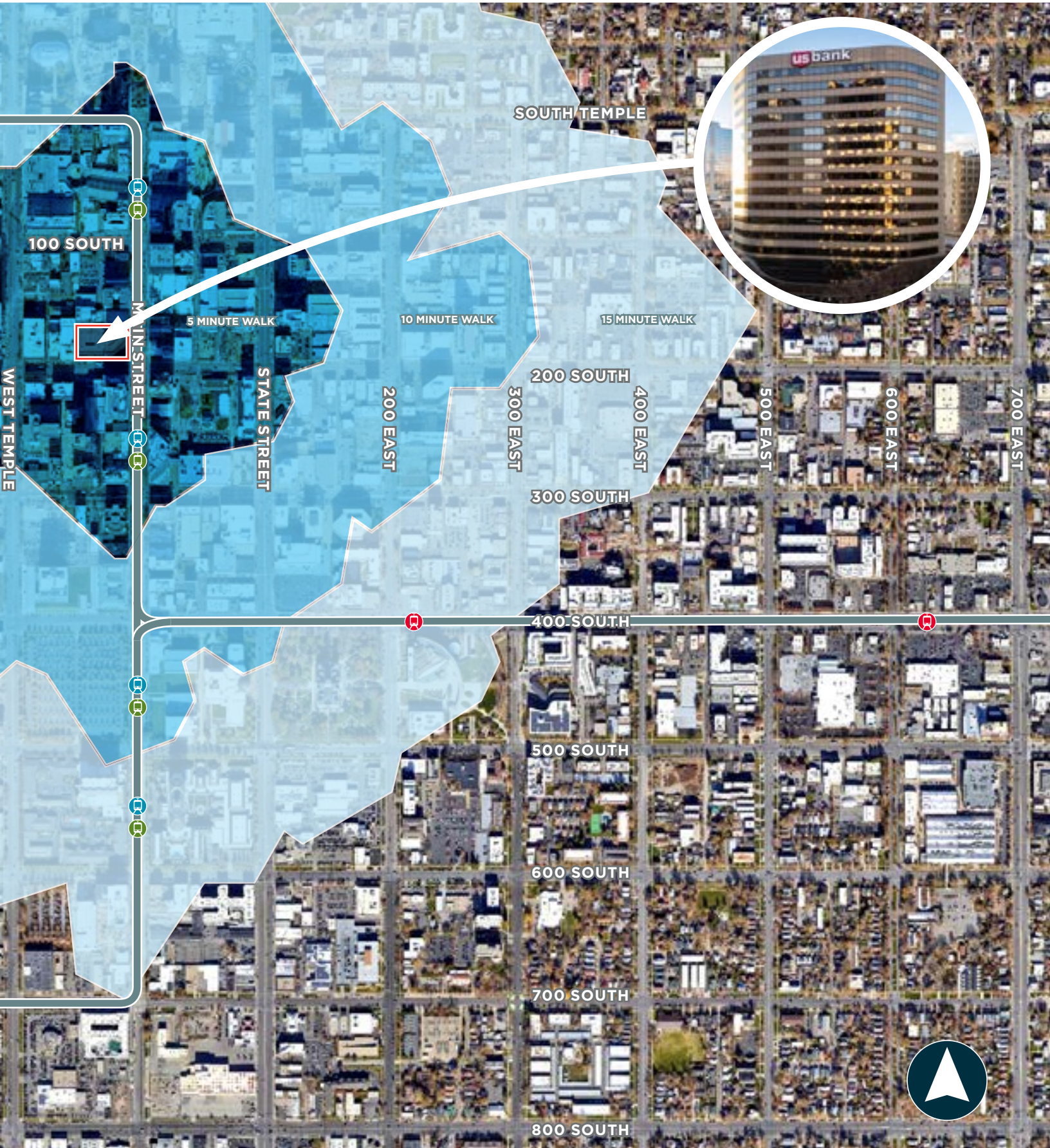


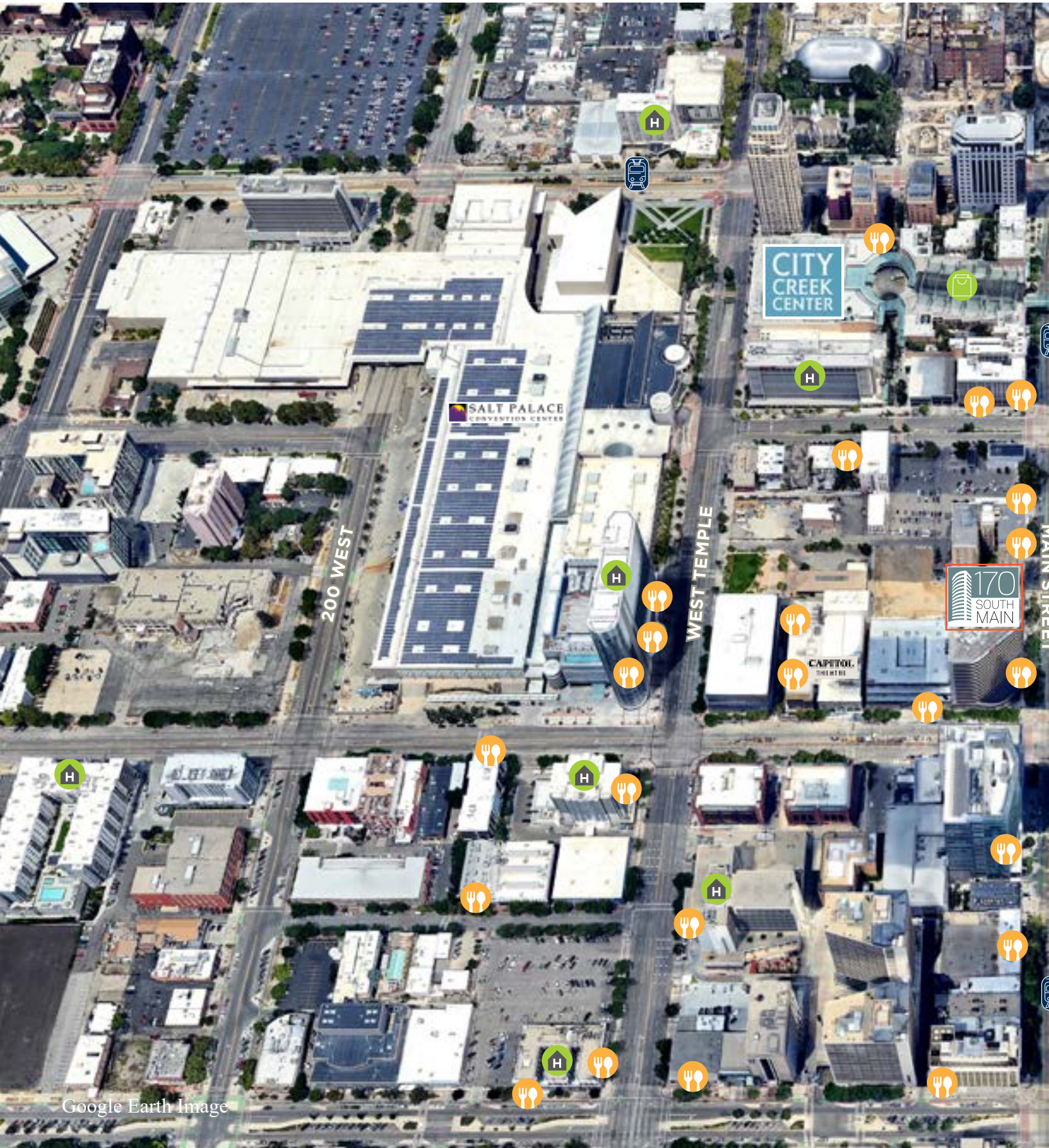


170 SOUTH MAIN STREET // SALT LAKE CITY, UTAH



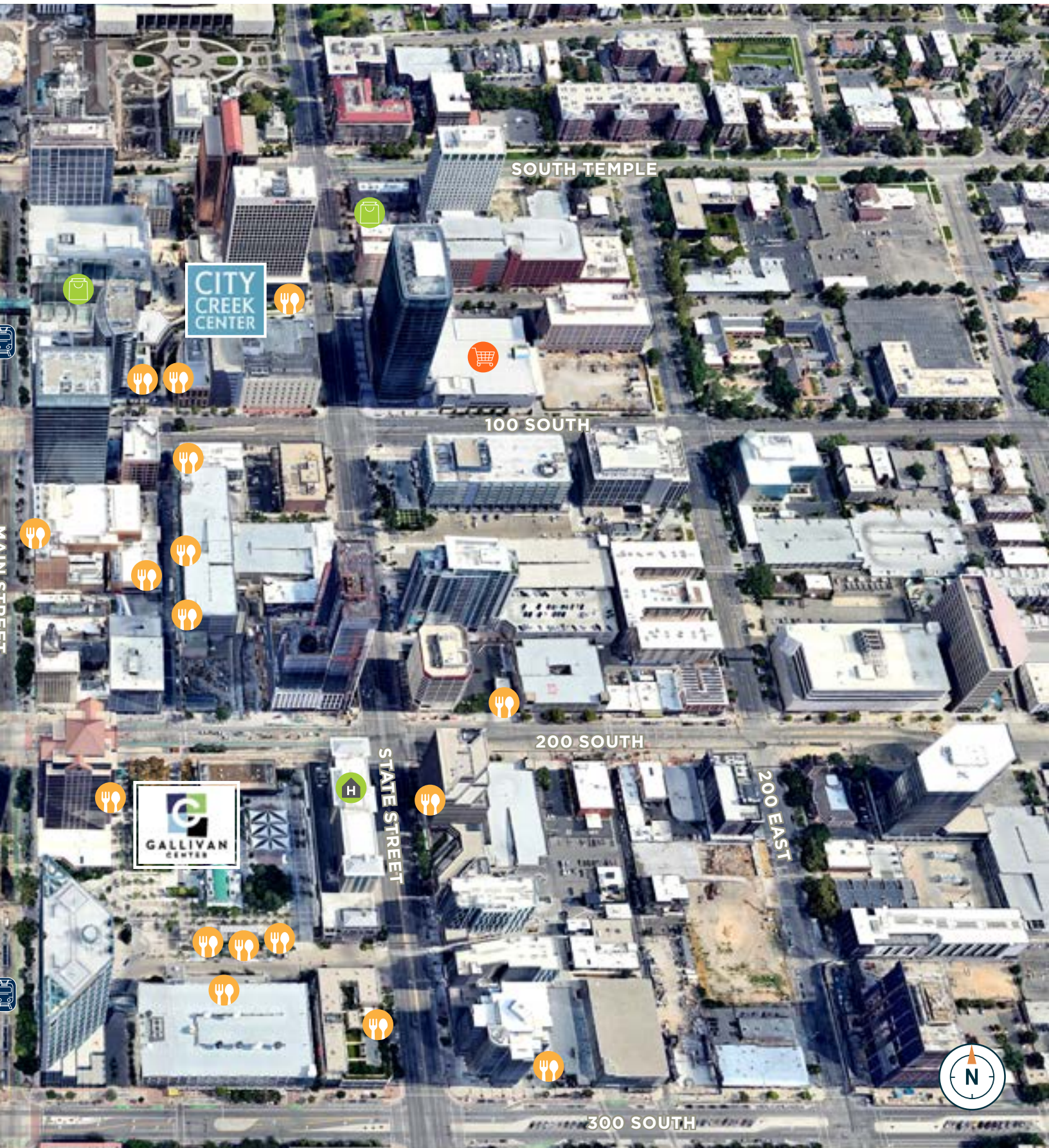
# DOWNTOWN SALT LAKE CITY





Google Earth Image

# SURROUNDING AREA



us bank



170 South Main Street  
Salt Lake City • Utah

MARKETED BY:

Mike Richmond **801.303.5434**  
mike.richmond@cushwake.com

Dana Baird, CCIM **801.303.5526**  
dana.baird@cushwake.com



170 South Main Street, Suite 1600 • Salt Lake City, Utah 84111  
Tel 801-322-2000 • [cushmanwakefield.com](http://cushmanwakefield.com)

Cushman & Wakefield Copyright 2021. No warranty or representation, express or implied, is made to the accuracy or completeness of the information contained herein, and same is submitted subject to errors, omissions, change of price, rental or other conditions, withdrawal without notice, and to any special listing conditions imposed by the property owner(s). As applicable, we make no representation as to the condition of the property (or properties) in question. (G:\UT\SL1\Shared\Apps\Gigas\1 - Projects\Richmond, Mike\1 - Flyers\170 South Main\170 South Main Flyers)