

Northview Concourse

7101-7123 San Pedro Ave
San Antonio, TX 78216



Northview Concourse is a 30,804 SF neighborhood shopping center located on San Pedro Avenue in the heart of North Central San Antonio. Positioned along a high-traffic retail corridor with excellent visibility and convenient access, the center serves a dense surrounding population and offers an ideal location for retail and service users seeking a well-established presence in one of the city's most active commercial corridors.

Demographics (map on next page)

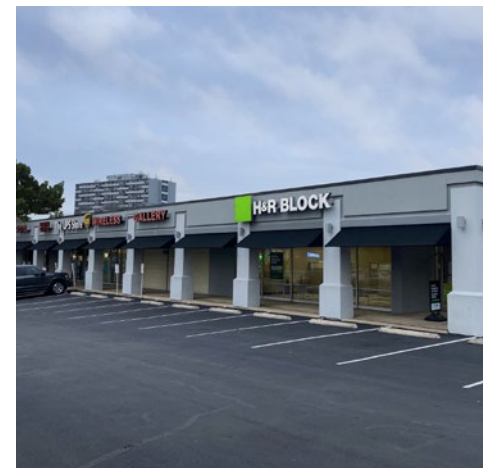
	1 Mile	3 Miles	5 Miles
2025 Population	12,445	114,869	327,729
Households	5,025	46,924	140,507
Average HH Income	\$82,658	\$87,375	\$89,086

Available Spaces (site map on next page)

Ste 7101-A - 2,400 SF Ste 7123 - 3,560 SF
Ste 7101-B - 2,400 SF

Traffic Counts (2025)

San Pedro Ave: 29,971 VPD



LEASING

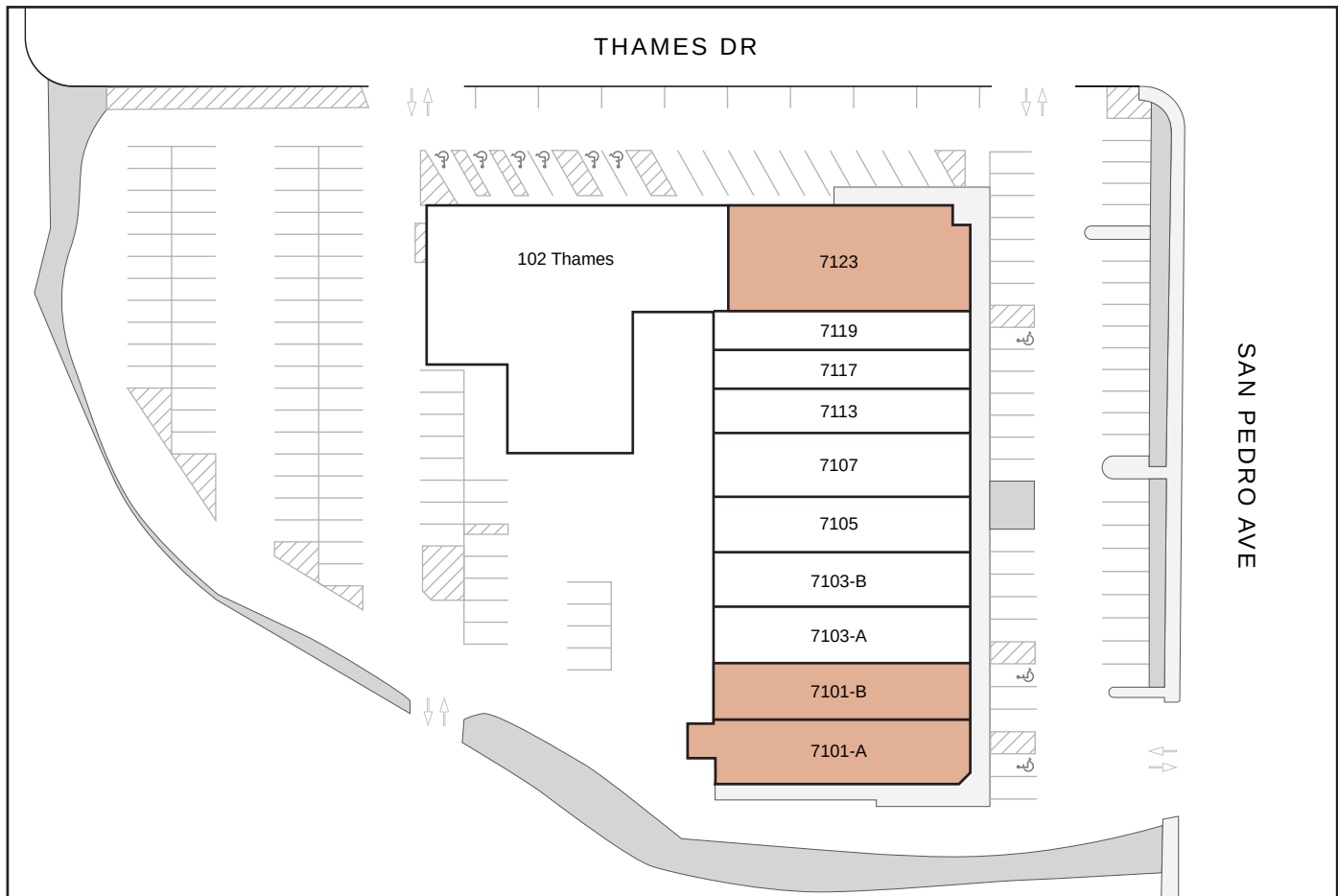
Scott Eiting
214.244.4183
seiting@dogwoodcommercial.com

Jake Carr
210.860.2546
jcarr@dogwoodcommercial.com

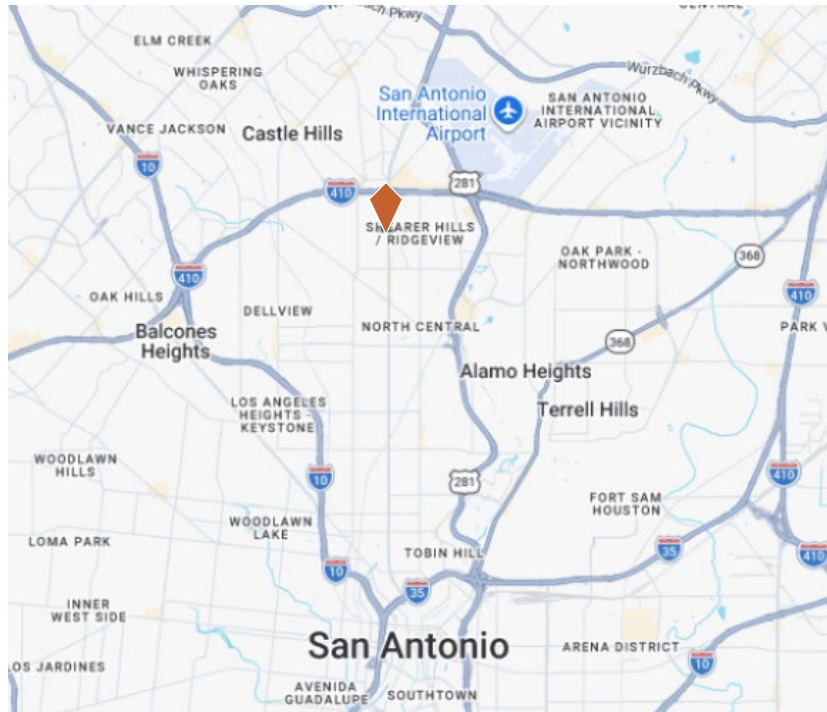


dogwoodcommercial.com

Property Site Map



Property Location



Tenant List

- 7101-A - Vacant
- 7101-B - Vacant
- 7103-A - Connect Hearing
- 7103-B - Level Up Kutz
- 7105 - Red Wing Shoes
- 7107 - Salon Centric
- 7113 - UPS Store
- 7117 - Fred Loya Insurance
- 7119 - H&R Block
- 7123 - Vacant
- 102 Thames - Club 12

LEASING

Scott Eiting
214.244.4183
seiting@dogwoodcommercial.com

Jake Carr
210.860.2546
jcarr@dogwoodcommercial.com

