

FOR LEASE

17 Bluxome St.

San Francisco, CA 94107

Highly Creative Single Tenant
Building, Steps from Caltrain.

[View Online](#)



STARBOARD CRE
LOCAL • INDEPENDENT • ENTREPRENEURIAL

STARBOARDCRE.COM
OFC. PHONE 415.765.6900
49 POWELL STREET, SAN FRANCISCO, CA 94102

17 BLUXOME STREET

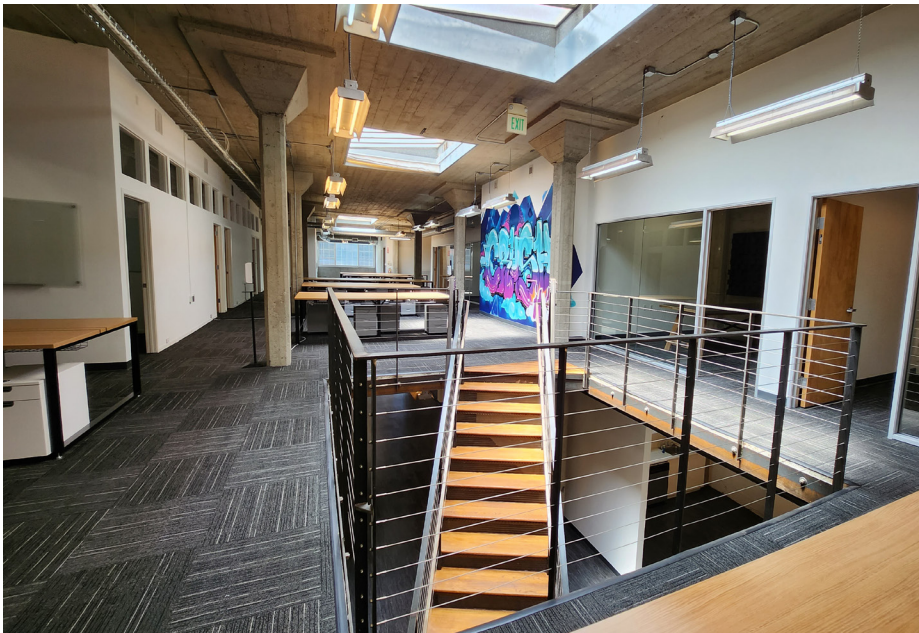
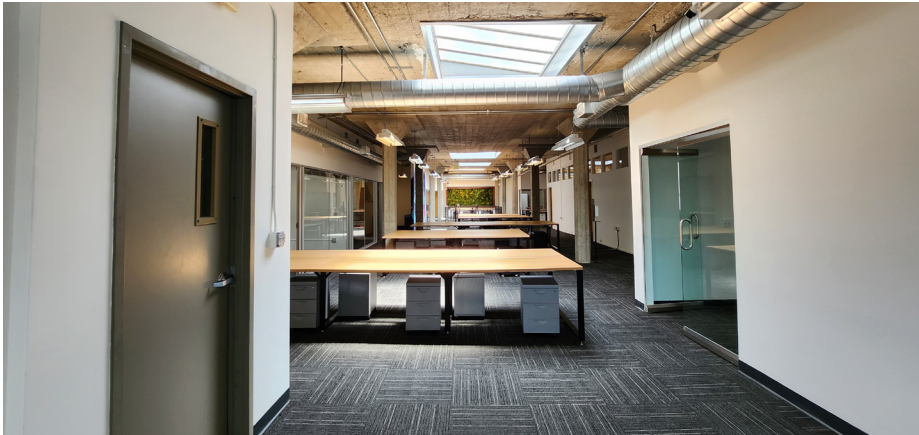
Square Ft.	± 10,800 SF
Space Type	Flex
Lease Term	Flexible
Lease Rate	Negotiable

HIGHLIGHTS

- High Ceilings W/ Exposed Concrete Throughout
- Full HVAC W/ Exposed Spiral Ductwork Throughout
- Four (4) Restrooms
- Entry/Reception Area
- 9 Conference Rooms
- 6 Private Offices
- Skylights Throughout
- Large Kitchen/Dining Area W/ Open Seating
- Abundant Natural Light
- Multiple Open Bullpen Work Areas

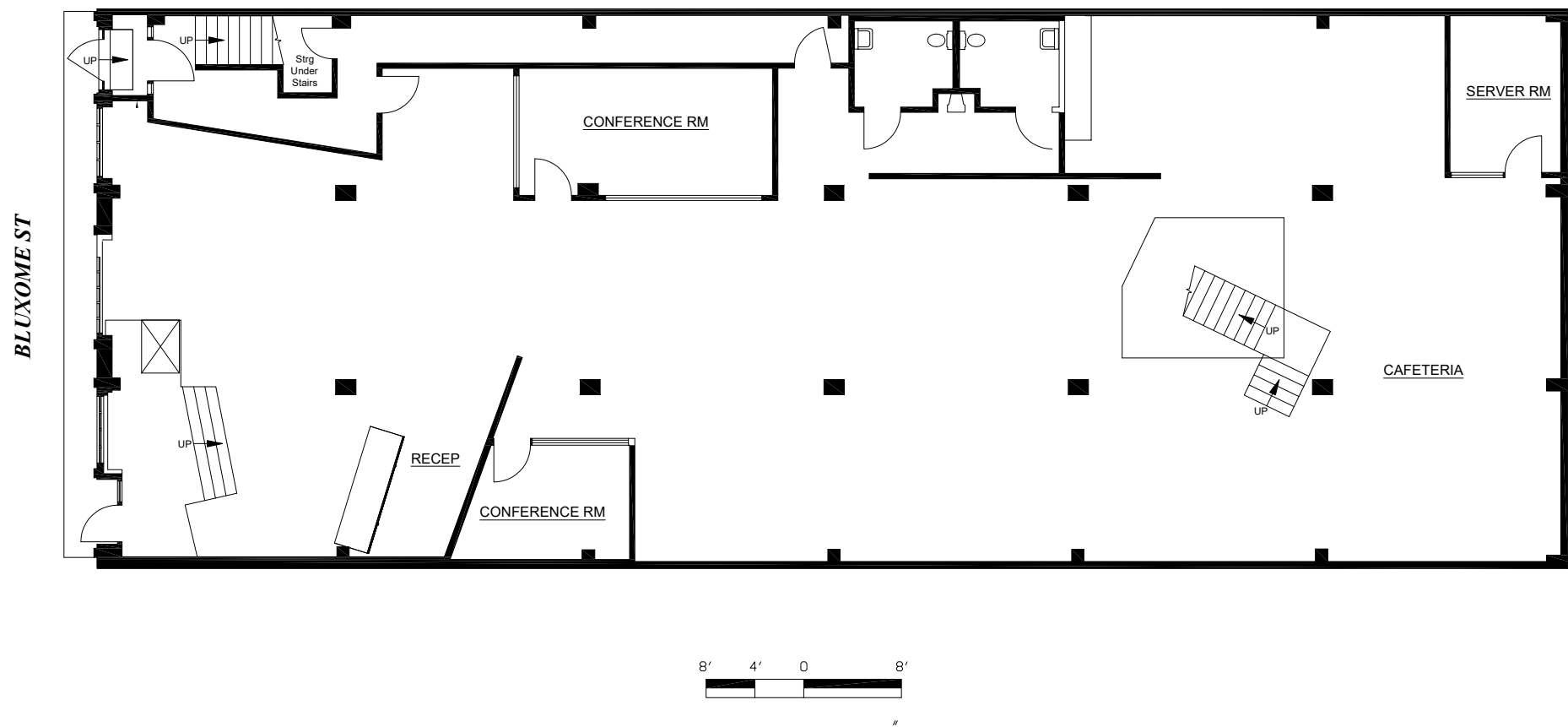






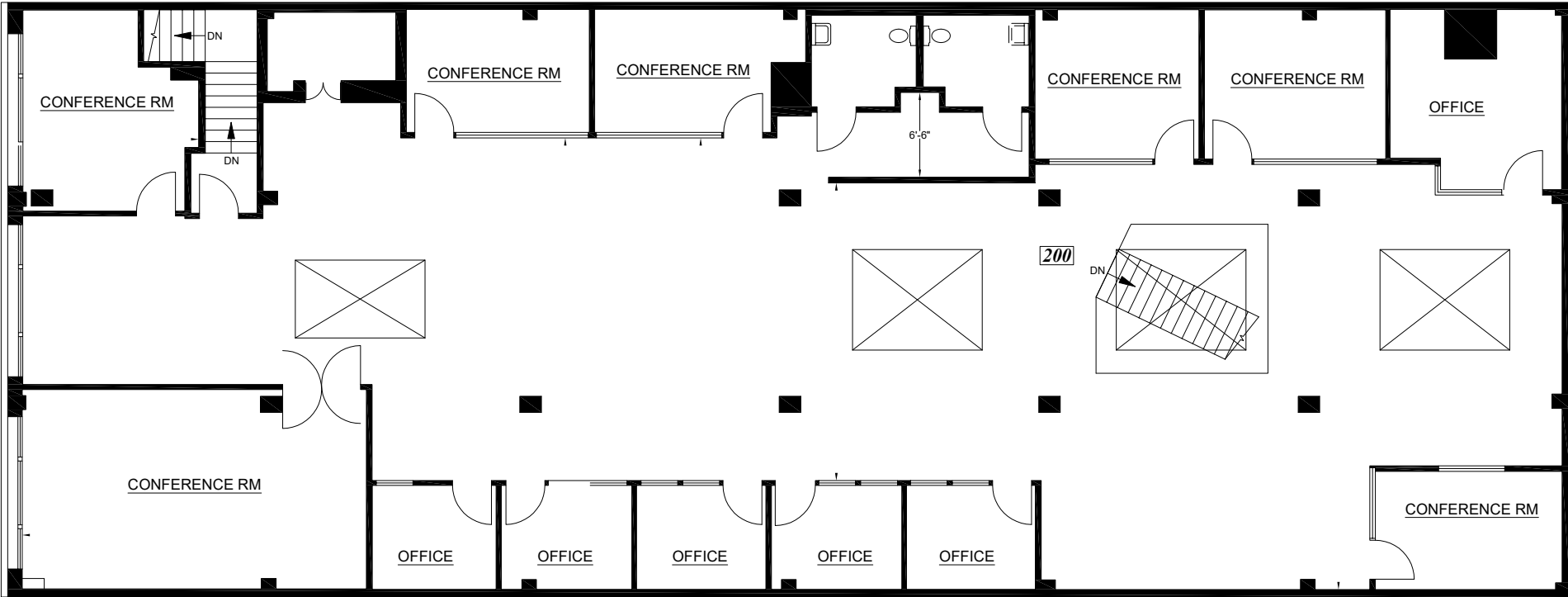
1ST FLOOR – FLOOR PLAN

FOR LEASE



2ND FLOOR – FLOOR PLAN

FOR LEASE



**Mario Previtali**

SENIOR LEASING & SALES ASSOCIATE

mario@starboardcre.com

CELL: 415.755.8905

PHONE: 415.765.6900

DRE # 01902075

[View Online](#)



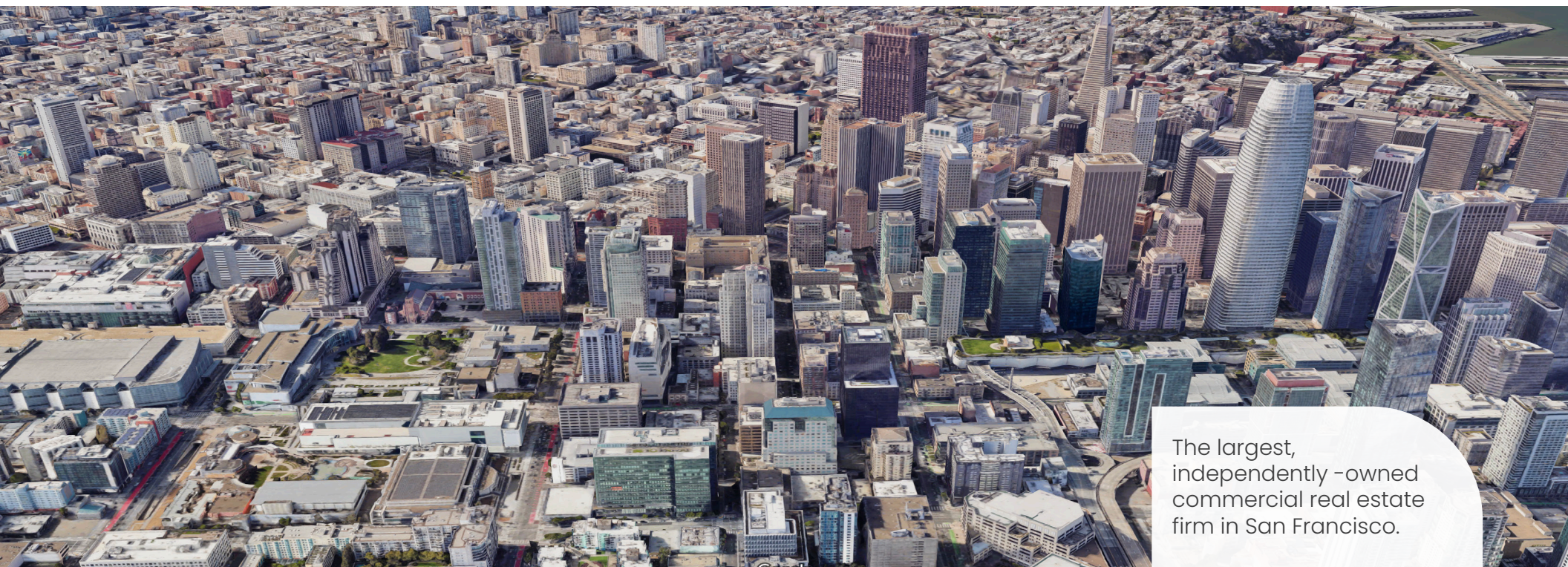


STARBOARD CRE
LOCAL • INDEPENDENT • ENTREPRENEURIAL

STARBOARDCRE.COM

OFC. PHONE 415.765.6900

49 POWELL STREET, SAN FRANCISCO, CA 94102



The largest,
independently -owned
commercial real estate
firm in San Francisco.

Unique Vision

We see what others miss

Local Market Leader

No one knows Northern
California like we do

Full Service Firm

We do it all

Locally based, technology forward, our brokers are highly qualified experts backed by a full-service, in-house support team who understand the intricacies of San Francisco real estate. Starboard CRE brings decades of brokerage experience representing over 600 million square feet of space with an aggregate lease value of over 10 billion and investments sold over 3 billion.

DRE# 01103056

