

# STONEMILL BUSINESS PARK

204 & 312 SE Stonemill Drive | Vancouver, WA 98684

## FOR LEASE



## OFFICE SPACE FOR LEASE

### DETAILS

- Lease Rate: \$22.00 PSF, Full Service
- Suite 105: ± 3,192 SF (Available Feb 2027)
- Suite 115: ± 2,094 SF (Available Oct 2026)
- Suite 140: ± 2,765 SF
- Suite 145: ± 5,166 SF (Available Feb 2027)
- Suite 210: ± 7,790 SF (Available Feb 2027)
- Suite 225: ± 6,810 SF

### FEATURES

- 4/1,000 Parking Ratio
- Across the Street from Millport Shopping Center and Kaiser Permanente Cascade Park Medical Center
- Nearby to DoubleTree and Hampton Inn Hotels
- Just off of Mill Pain Blvd. with proximity to I-205



06.23.2026

For more information or a property tour, please contact:

**TIM PFEIFFER**

503.225.8455

TimP@norris-stevens.com



*Information contained herein has been obtained from others and considered to be reliable; however, a prospective purchaser or lessee is expected to verify all information to his/her own satisfaction.*

## Norris & Stevens

12503 SE Mill Plain Boulevard • Suite 260

Vancouver, WA 98684

503.223.3171 • norris-stevens.com

# STONEMILL BUSINESS PARK

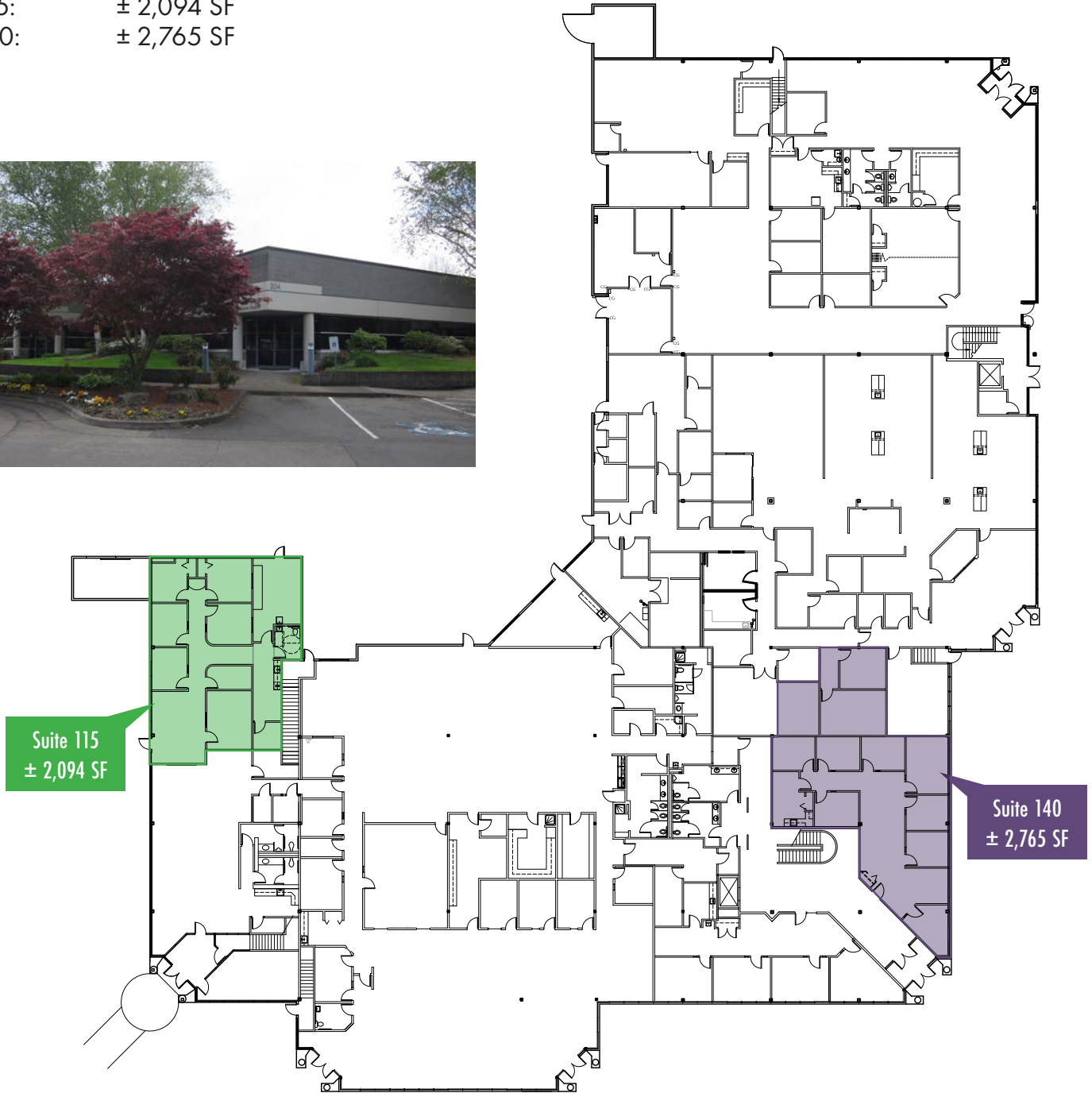
204 & 312 SE Stonemill Drive | Vancouver, WA 98684

## FOR LEASE

### BUILDING A - 1ST FLOOR

#### AVAILABILITY

Suite 115: ± 2,094 SF  
Suite 140: ± 2,765 SF



For more information or a property tour, please contact:

**TIM PFEIFFER**  
503.225.8455  
TimP@norris-stevens.com

## Norris & Stevens

12503 SE Mill Plain Boulevard • Suite 260  
Vancouver, WA 98684  
503.223.3171 • norris-stevens.com



Information contained herein has been obtained from others and considered to be reliable; however, a prospective purchaser or lessee is expected to verify all information to his/her own satisfaction.

# STONEMILL BUSINESS PARK

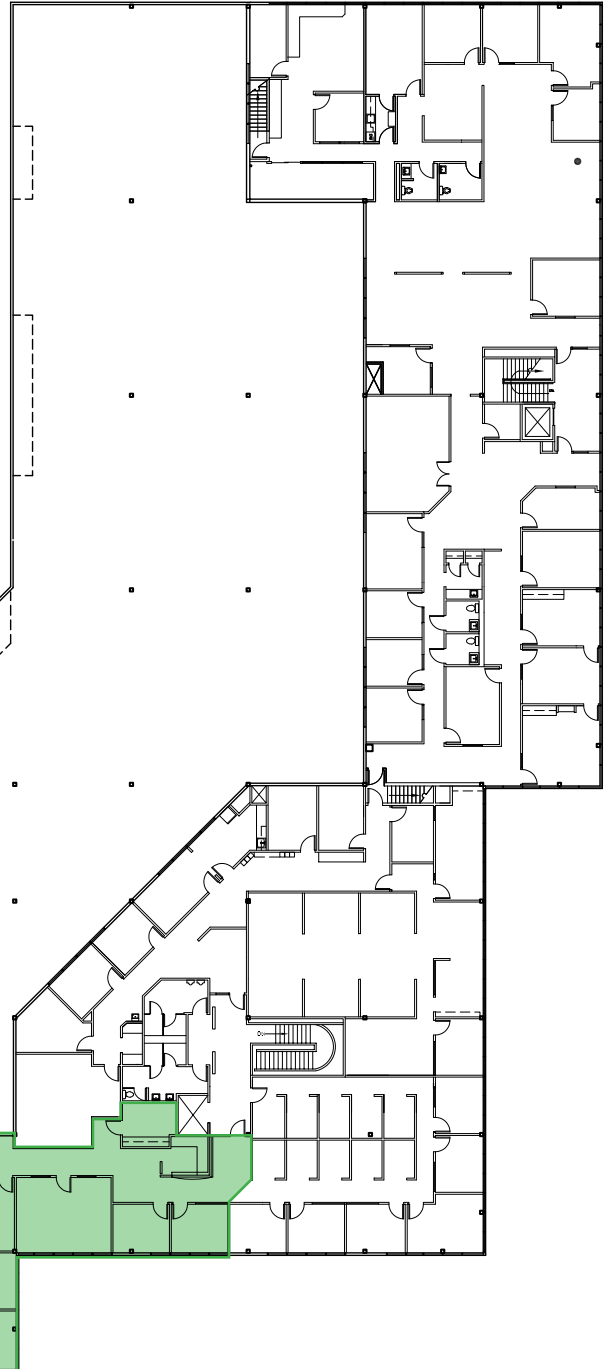
204 & 312 SE Stonemill Drive | Vancouver, WA 98684

## FOR LEASE

### BUILDING A - 2ND FLOOR

#### AVAILABILITY

Suite 105: ± 3,192 SF  
Suite 145: ± 7,790 SF



Suite 105  
± 3,192 SF

Suite 145  
± 7,790 SF

For more information or a property tour, please contact:

**TIM PFEIFFER**  
503.225.8455  
TimP@norris-stevens.com

## Norris & Stevens

12503 SE Mill Plain Boulevard • Suite 260  
Vancouver, WA 98684  
503.223.3171 • norris-stevens.com



Information contained herein has been obtained from others and considered to be reliable; however, a prospective purchaser or lessee is expected to verify all information to his/her own satisfaction.

# STONEMILL BUSINESS PARK

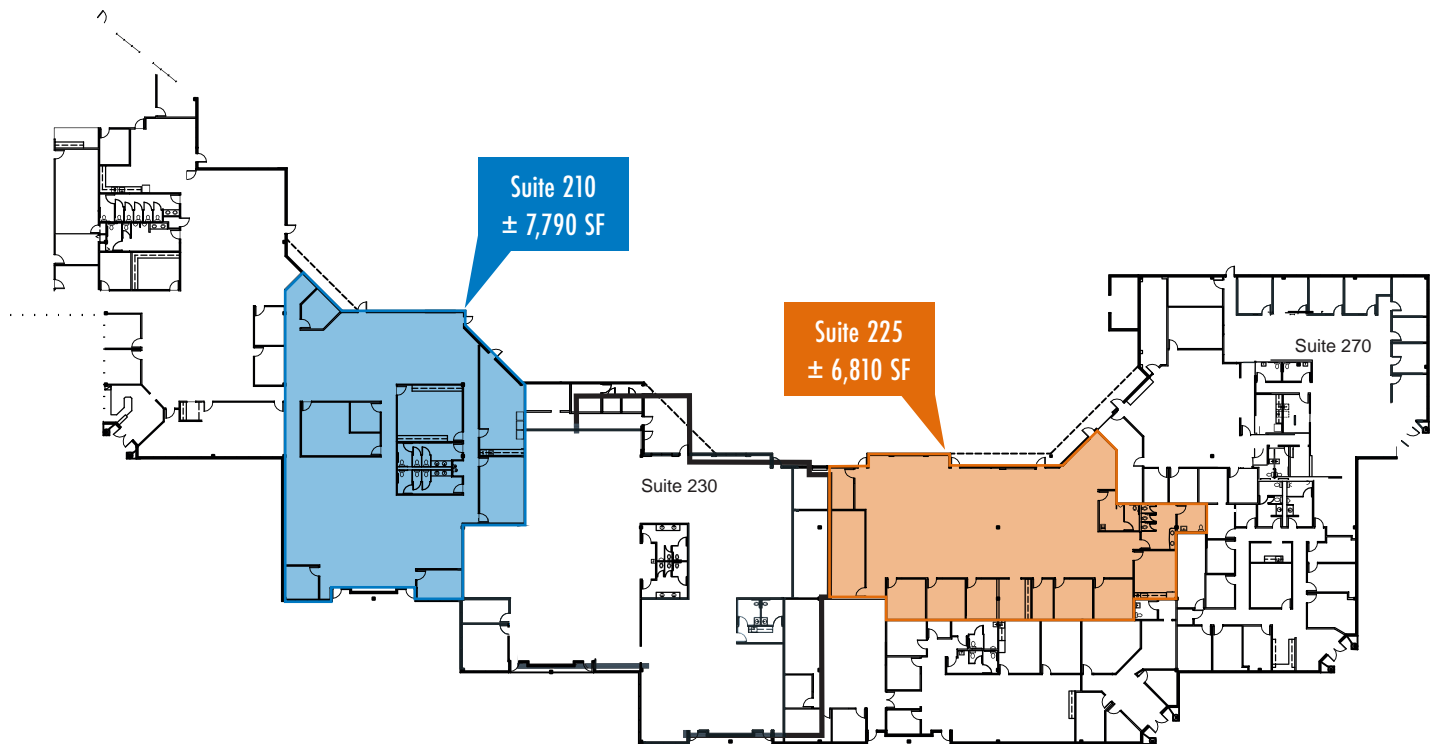
204 & 312 SE Stonemill Drive | Vancouver, WA 98684

## FOR LEASE

### BUILDING B

#### AVAILABILITY

Suite 210: ± 7,790 SF  
Suite 225: ± 6,810 SF



For more information or a property tour, please contact:

**TIM PFEIFFER**  
503.225.8455  
TimP@norris-stevens.com



Information contained herein has been obtained from others and considered to be reliable; however, a prospective purchaser or lessee is expected to verify all information to his/her own satisfaction.

## Norris & Stevens

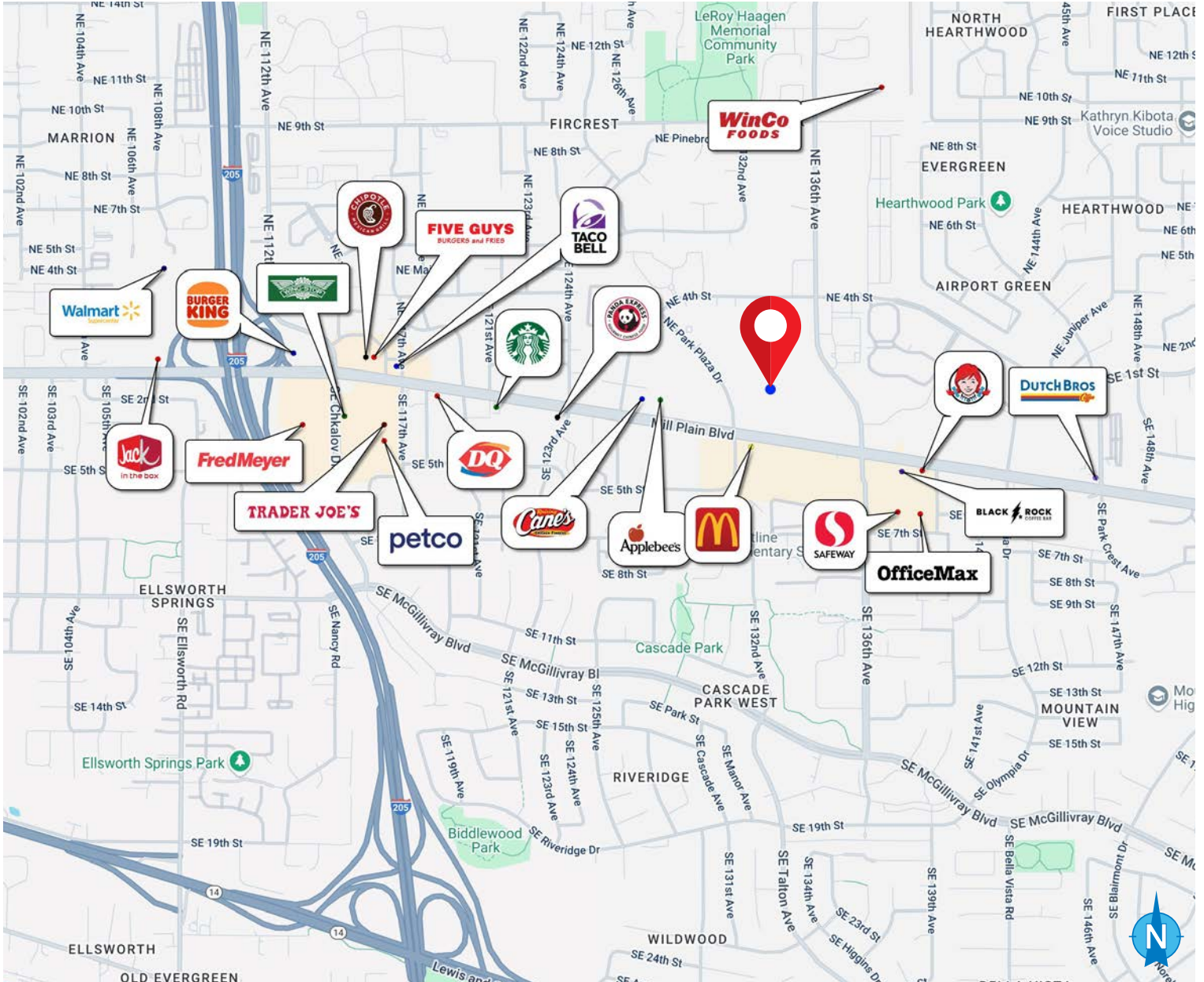
12503 SE Mill Plain Boulevard • Suite 260  
Vancouver, WA 98684  
503.223.3171 • norris-stevens.com

# STONEMILL BUSINESS PARK

204 & 312 SE Stonemill Drive | Vancouver, WA 98684

# FOR LEASE

## AERIAL MAP



For more information or a property tour, please contact:

**TIM PFEIFFER**

503.225.8455

TimP@norris-stevens.com



Information contained herein has been obtained from others and considered to be reliable; however, a prospective purchaser or lessee is expected to verify all information to his/her own satisfaction.

# Norris & Stevens

12503 SE Mill Plain Boulevard • Suite 260

Vancouver, WA 98684

503.223.3171 • norris-stevens.com