

**200 Salina Meadows Parkway
Syracuse, NY 13212**

SUBLET AVAILABLE

2,198 SF



A great building with lots of possibilities of all types!! A must see!

Property Description

- **2,198 SF 1st Class Corporate Floor Plan in a 2 story 45,000 SF 1st Class Office Building**
- **Convenient First Floor Suite**
- **Secure Private Offices / Conference Rooms**
- **Open Floor Plan for Cubicles**
- **Condition: Excellent**
- **Prestigious Salina Meadows Office Park**
- **Aggressive Sublet Pricing**



COR CNY BROKERAGE COMPANY, LLC . 542 TOWNE DRIVE . FAYETTEVILLE, NY 13066

315-663-2100

Kerry A. Mannion

Licensed Real Estate Broker

kmannion@corcompanies.com

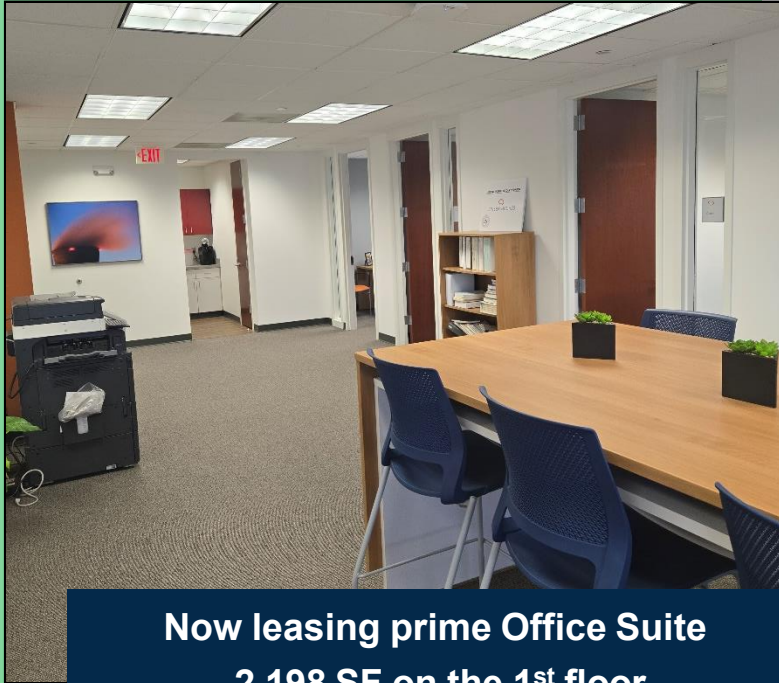


Although the information furnished regarding property for sale, rental or financing is from sources deemed reliable, such information has not been verified, and no express representation is made nor is any to be implied as to the accuracy thereof. It is submitted subject to errors, omissions, change of price, rental or other conditions, prior sale, lease or financing, or withdrawal without notice.

200 Salina Meadows Parkway Syracuse, NY 13212

SUBLET AVAILABLE

2,198 SF

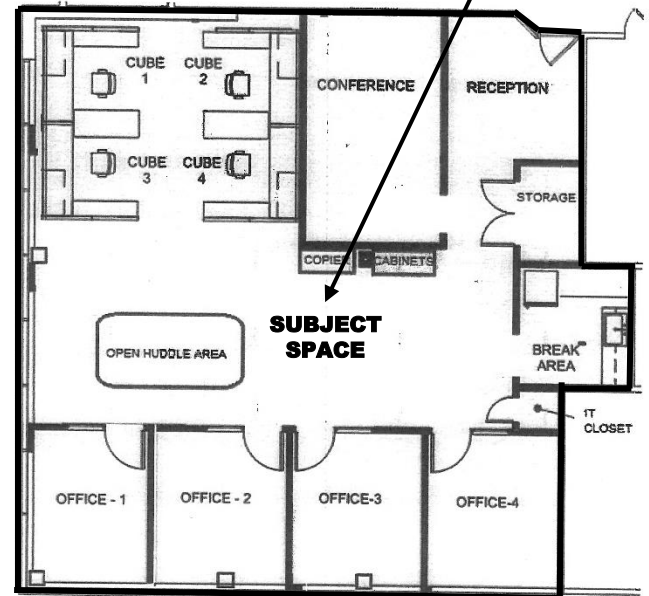


Now leasing prime Office Suite
2,198 SF on the 1st floor



This Class "A" office building is conveniently located within Salina Meadows Office Park and is centrally located between North Syracuse and Liverpool. Easy access to various banks, restaurants, hotels, health clubs and area amenities.

2,198 SF



200 Salina Meadows Parkway is professionally managed, as part of a national portfolio of office space throughout the United States

COR CNY BROKERAGE COMPANY, LLC . 542 TOWNE DRIVE . FAYETTEVILLE, NY 13066

315-663-2100

Kerry A. Mannion

Licensed Real Estate Broker

kmannion@corcompanies.com



Although the information furnished regarding property for sale, rental or financing is from sources deemed reliable, such information has not been verified, and no express representation is made nor is any to be implied as to the accuracy thereof. It is submitted subject to errors, omissions, change of price, rental or other conditions, prior sale, lease or financing, or withdrawal without notice.