

20  
25 M<sup>ST</sup>

2,000 - 25,121 SF



Leasing Information:  
202.513.6700

**Lincoln**

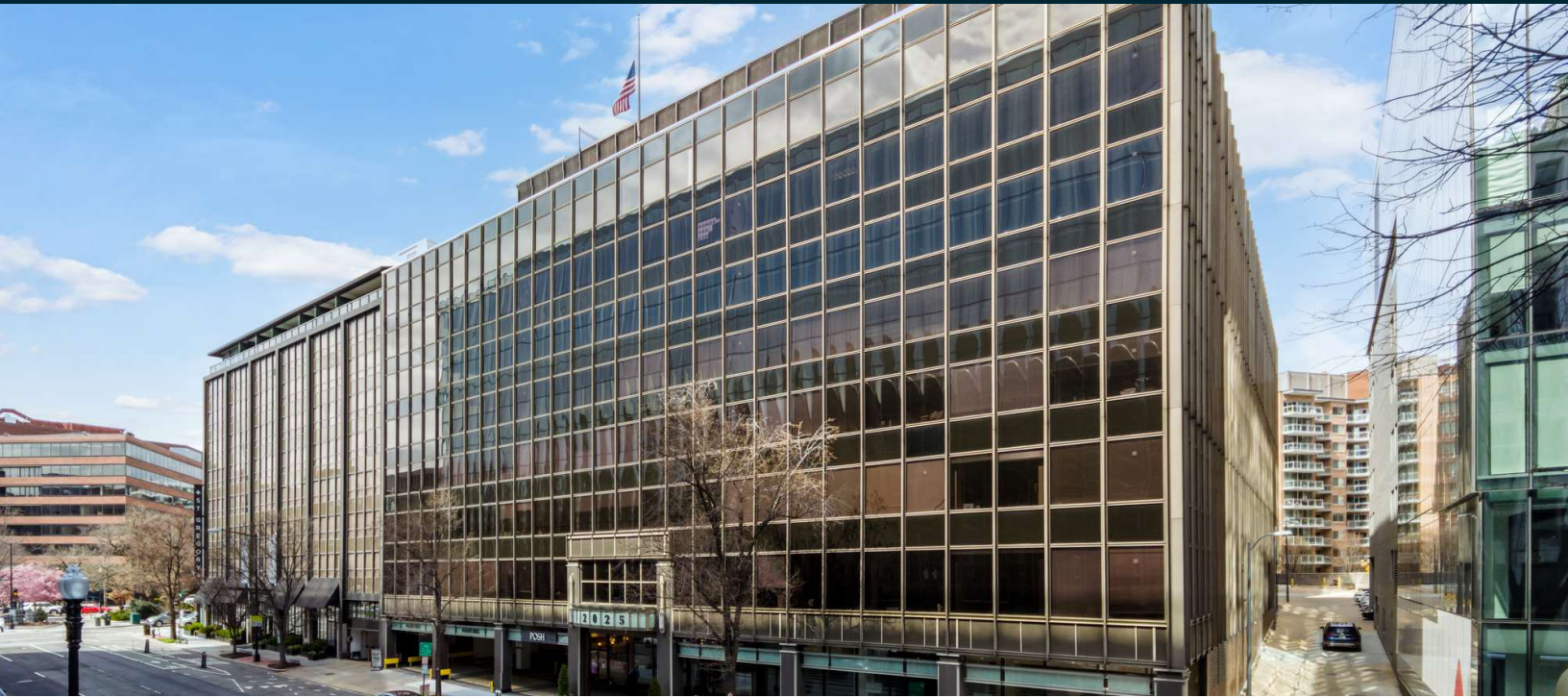
**Adam Biberaj**  
202.513.6736  
abiberaj@lpc.com

**Merrill Turnbull**  
202.513.6713  
mturnbull@lpc.com

**Tim Whitebread**  
202.513.6712  
twhitebread@lpc.com

Lincoln Property Company  
101 Constitution Avenue, NW Suite 325 East  
Washington, DC 20001

[www.lpc.com](http://www.lpc.com)



### Property Highlights

- Top floor available
- Signage opportunity available
- Efficient floor plans with three sides of glass
- Private rooftop lounge and on-site parking (1/1,200 SF)
- Direct access to transportation and major thoroughfares
- Proximity to over 200 restaurants and 8 high-end hotels
- 2 blocks from Dupont Circle Metro

### Availabilities

### SF

### Lease Rate

### Date Available

Suite 500	7,377 SF	Negotiable	Immediately
Suite 610	4,721 SF	\$46.00 FS	Immediately
Suite 700	25,121 SF	\$49.00 FS	Immediately
Suite 800	25,121 SF	\$49.00 FS	Immediately
Office / Retail	2,000 - 12,956 SF	Negotiable	Immediately

Adam Biberaj

202.513.6736  
abiberaj@lpc.com

Merrill Turnbull

202.513.6713  
mturnbull@lpc.com

Tim Whitebread

202.513.6712  
twhitebread@lpc.com

# Lincoln

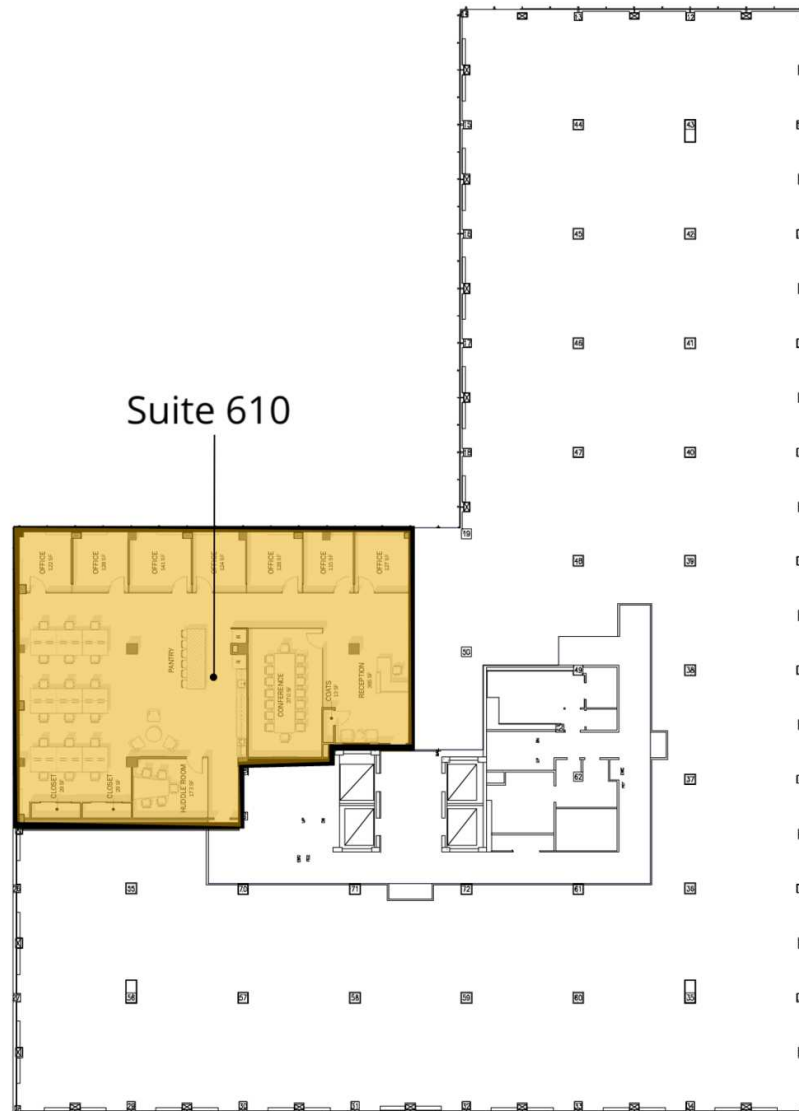


Suite	Size	Lease Rate	Description
■ Suite 500	7,377 SF	Negotiable	Front of the building office intensive layout with fantastic elevator exposure

Adam Biberaj	Merrill Turnbull	Tim Whitebread
202.513.6736	202.513.6713	202.513.6712
abiberaj@lpc.com	mturnbull@lpc.com	twhitebread@lpc.com

Lincoln

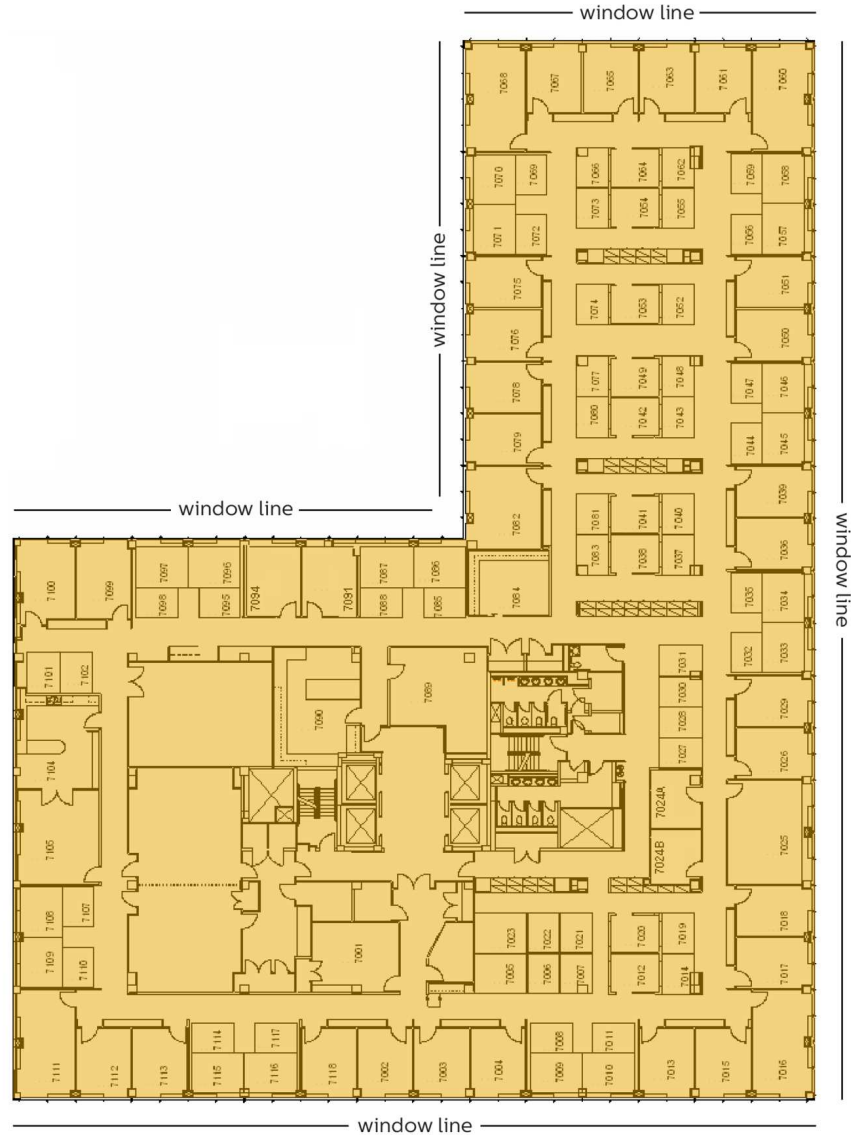




Suite	Size	Lease Rate	Description
■ Suite 610	4,721 SF	\$46.00 FS	Hypothetical Floorplan Shown.

Adam Biberaj	Merrill Turnbull	Tim Whitebread
202.513.6736	202.513.6713	202.513.6712
abiberaj@lpc.com	mturnbull@lpc.com	twhitebread@lpc.com

Lincoln



Suite	Size	Lease Rate	Description
■ Suite 700	25,121 SF	\$49.00 FS	Available Immediately

Adam Biberaj	Merrill Turnbull	Tim Whitebread
202.513.6736	202.513.6713	202.513.6712
abiberaj@lpc.com	mtturnbull@lpc.com	twhitebread@lpc.com

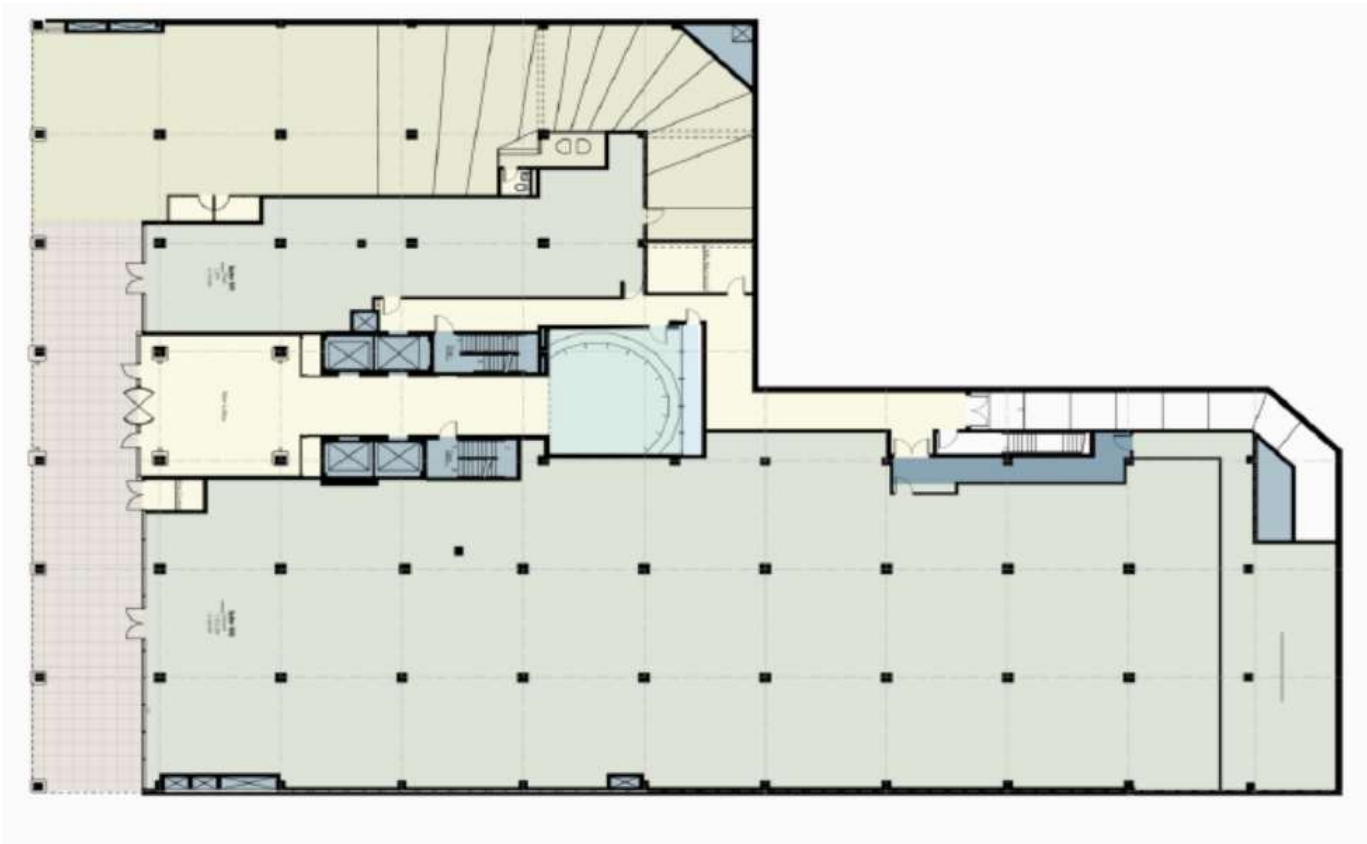
Lincoln



Suite	Size	Lease Rate	Description
■ Suite 800	25,121 SF	\$49.00 FS	Full top floor available immediately

Adam Biberaj	Merrill Turnbull	Tim Whitebread
202.513.6736	202.513.6713	202.513.6712
abiberaj@lpc.com	mtturnbull@lpc.com	twhitebread@lpc.com

## Lincoln



Suite	Size	Lease Rate	Description
■ Office / Retail	2,000 - 12,956 SF	Negotiable	Direct access off of M Street with possibility for connectivity to building lobby. Existing classroom buildout with private restrooms and 14' ceilings! Retail signage available!

Adam Biberaj  
202.513.6736  
abiberaj@lpc.com

Merrill Turnbull  
202.513.6713  
mturnbull@lpc.com

Tim Whitebread  
202.513.6712  
twhitebread@lpc.com

Lincoln



20  
25

M

ST

Leasing Information:  
202.513.6700

**Adam Biberaj**  
202.513.6736  
abiberaj@lpc.com

**Merrill Turnbull**  
202.513.6713  
mturnbull@lpc.com

**Tim Whitebread**  
202.513.6712  
twhitebread@lpc.com

**Lincoln**

Lincoln Property Company  
101 Constitution Avenue, NW Suite 325 East  
Washington, DC 20001

[www.lpc.com](http://www.lpc.com)