

# 1650 12th St E



Presented By:  
Harry E. Robbins Associates, Inc.

1650 12th St E, Palmetto, FL 34221



# 1650 12th St E

1650 12th St E, Palmetto, FL 34221

## Property Details

Harry E. Robbins Associates Inc. is proud to present this 12,300 sqft standalone industrial building on a sprawling 1-acre parcel. Boasting 3,300 sqft of meticulously designed office space and 9,000 sqft of versatile warehouse area, this property is ideal for a range of industrial and commercial uses. Both the office and warehouse areas are air-conditioned, ensuring comfort and efficiency year-round. The fenced-in property offers ample parking, providing convenience and security. The warehouse currently has a drop ceiling that can be removed for taller 16ft ceilings. Both bay doors measure 12'x12'. This building is located minutes from I75, 275, US41, and Port Manatee. Contact me today to schedule your private showing. Please do not disturb current tenant.

**Price: \$13.00 /SF/YR**

- Air conditioned warehouse
- Fenced yard
- Close to I75, 275, US 41, and Port Manatee

View the full listing here: <https://www.loopnet.com/Listing/1650-12th-St-E-Palmetto-FL/32285710/>

Rental Rate:	\$13.00 /SF/YR
Property Type:	Industrial
Property Subtype:	Manufacturing
Rentable Building Area	12,300 SF
:	
Year Built:	2000
Rental Rate Mo:	\$1.08 /SF/MO

# 1650 12th St E

1650 12th St E, Palmetto, FL 34221

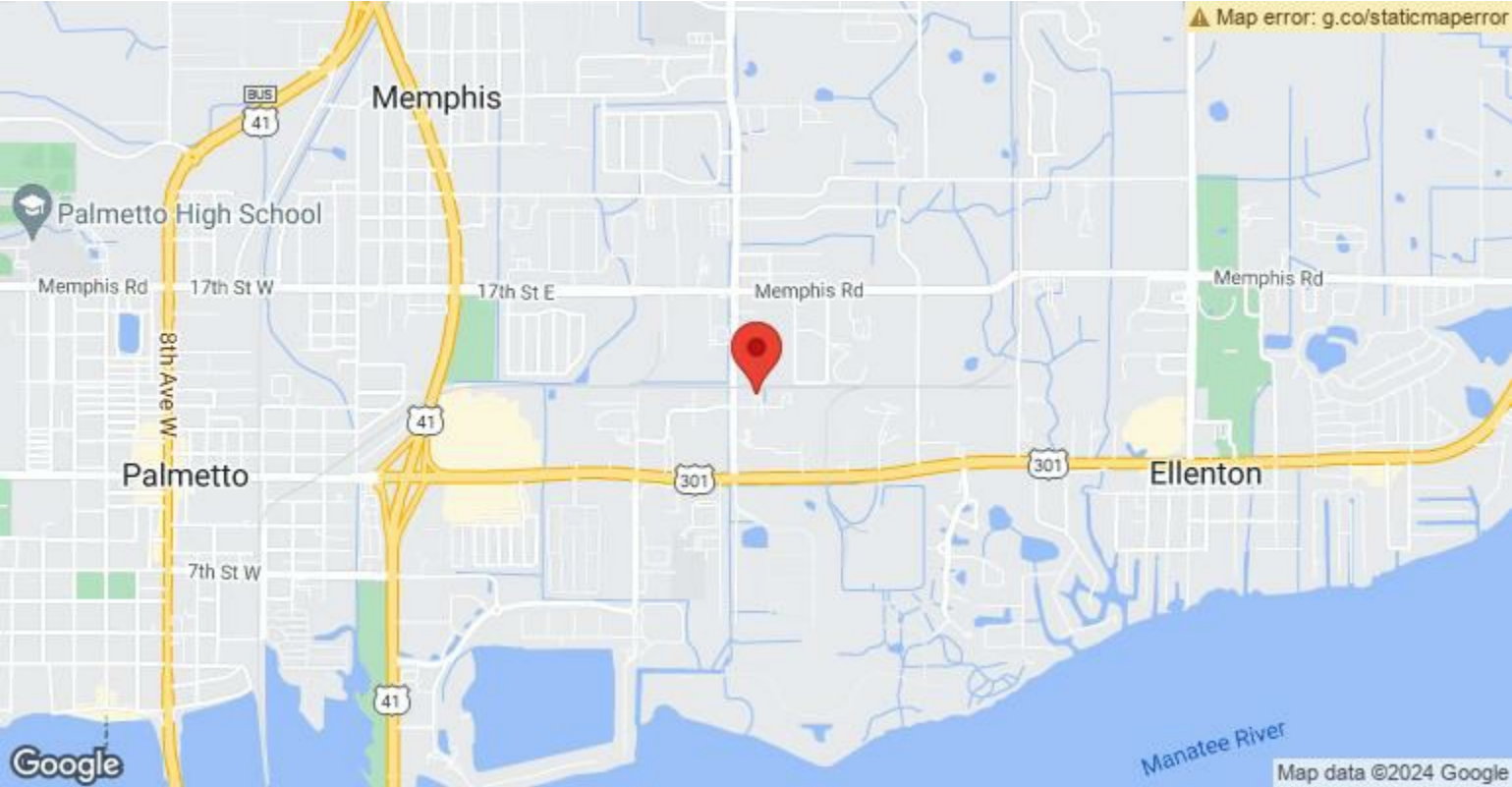
## Listing space

1st Floor	Space Available:	12,300 SF
	Rental Rate:	\$13.00 /SF/YR
	Date Available:	August 01, 2024
	Service Type:	Triple Net (NNN)
	Space Type:	Relet
	Space Use:	Industrial
	Lease Term:	5 Years

# 1650 12th St E

1650 12th St E, Palmetto, FL 34221

## Location



# 1650 12th St E

1650 12th St E, Palmetto, FL 34221

## Property Photos



Screenshot 2023-03-10 at 1.58.38 PM-2

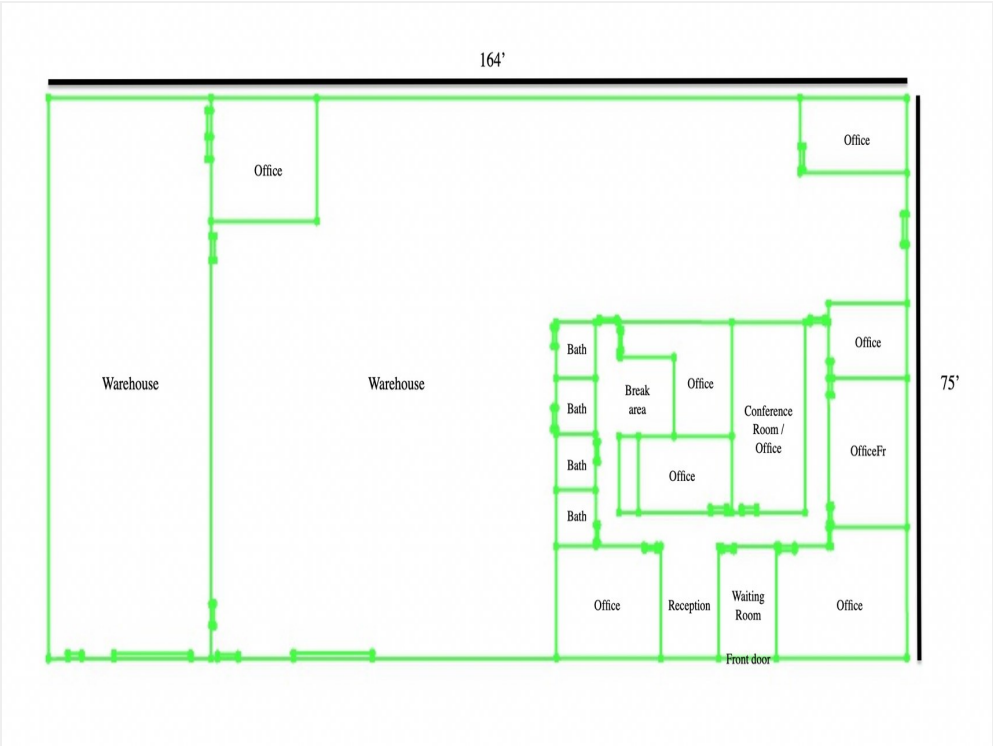


Screenshot 2022-11-08 at 4.35.33 PM

# 1650 12th St E

1650 12th St E, Palmetto, FL 34221

## Property Photos



Screen Shot 2022-08-04 at 1.27.18 PM



IMG\_2602

# 1650 12th St E

1650 12th St E, Palmetto, FL 34221



**Chris Bauman**

[Chrisb@robbscommercial.com](mailto:Chrisb@robbscommercial.com)

(941) 345-5907

**Harry E. Robbins  
Associates, Inc.**

3733 S Tuttle Ave, Suite 3739  
Sarasota, FL 34239

