



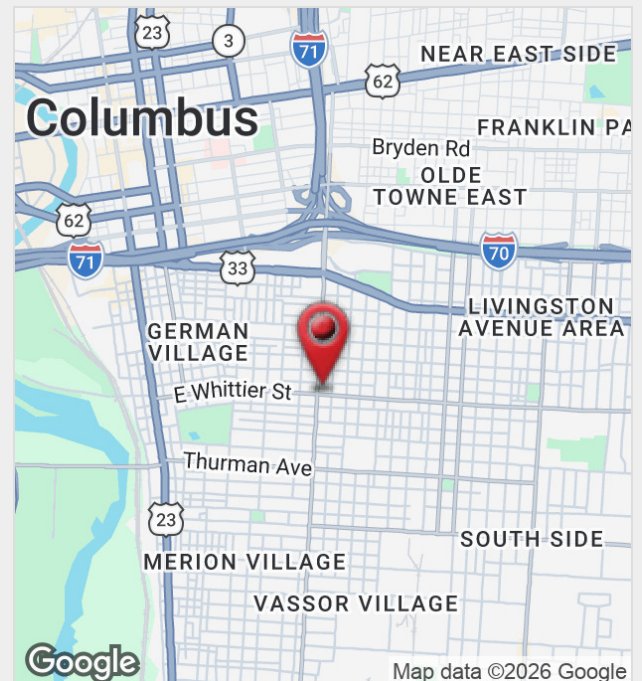
## 535 E Whittier St

Columbus, Ohio 43206

### Property Features

- Fully Built-Out Office or Retail Space
- A Mix of 5 Private Offices and a Large Open Areas
- Previously Designed for an Acupuncturist and Med Spa
- Fenced-in Concrete Patio in the Back with Parking
- Front Desk and Waiting Area Already in Place
- Functional Space with Nice Finishes for a Versatile Workspace
- Suitable for Co-Working Spaces or Executive Offices
- Co-Tenants are Boom Boom Tacos and Sacred Hand Tattoo
- Conveniently Located Near German / Merion Village
- Available Now

**Lease Rate: \$20.00 SF/Yr (Modified Gross)**

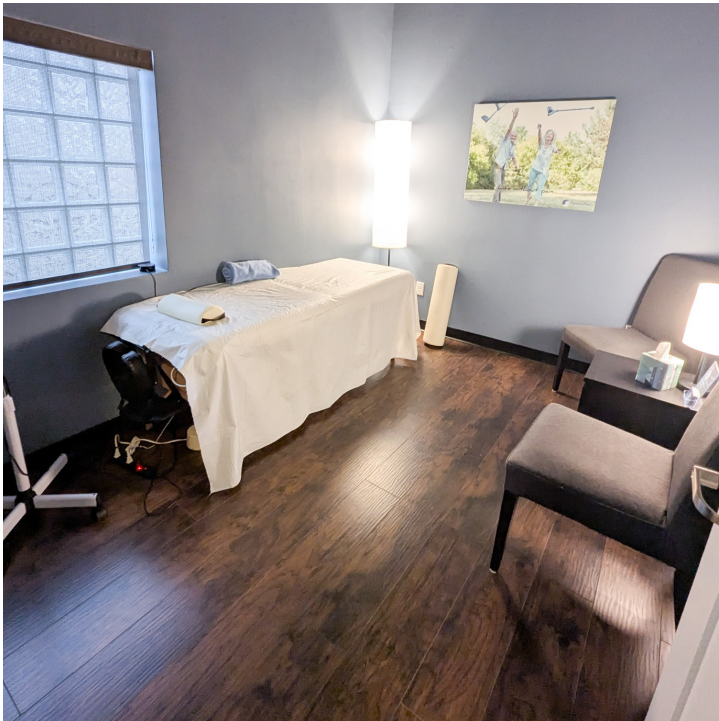


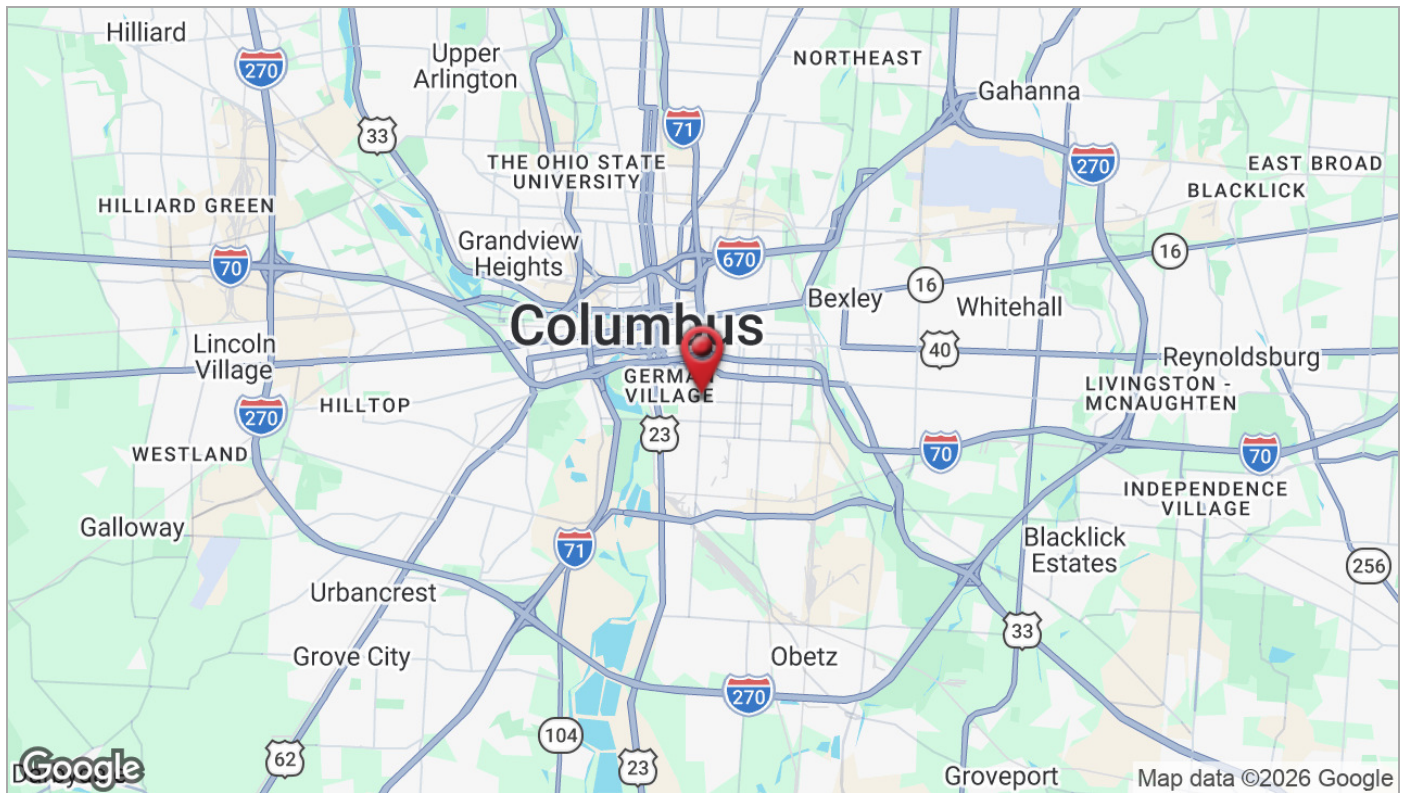
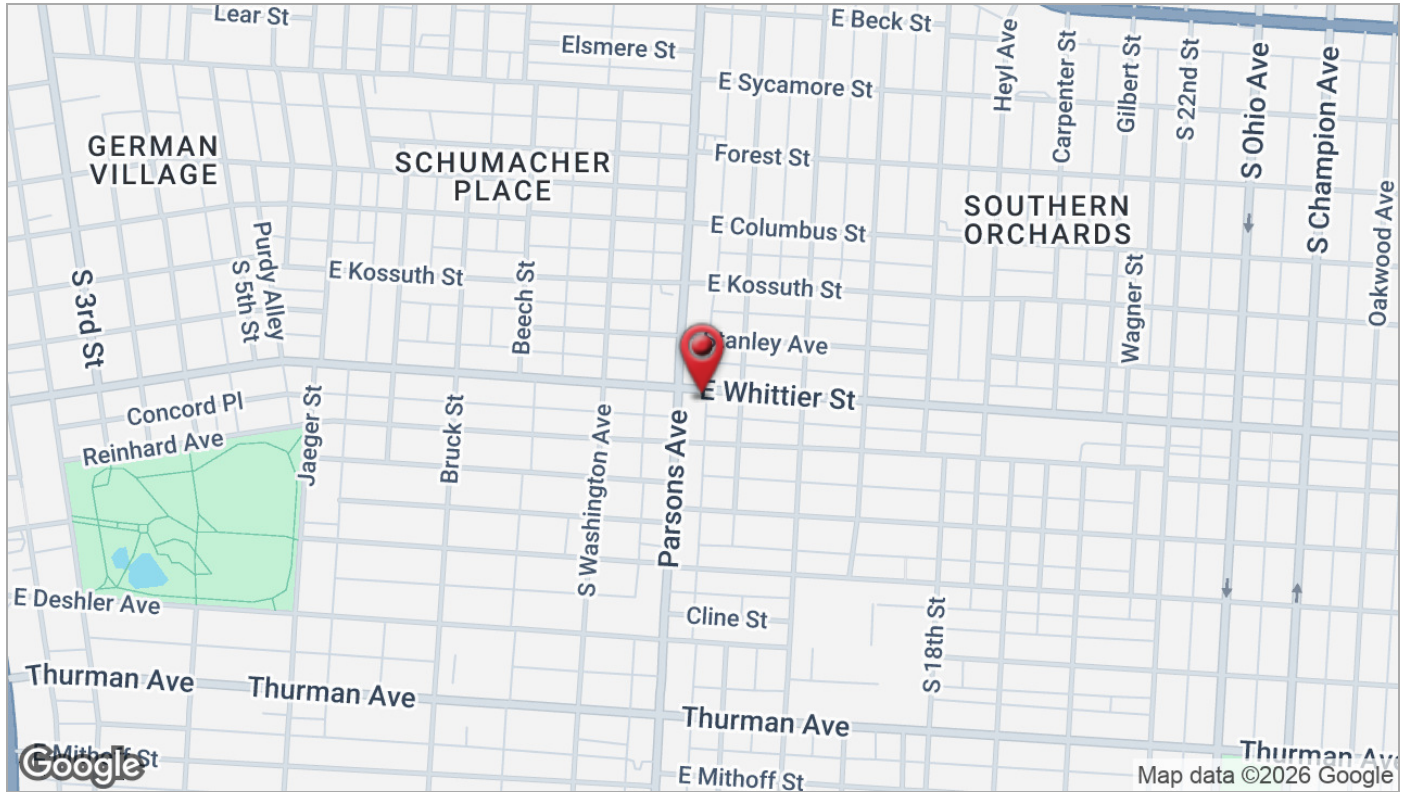
For more information:

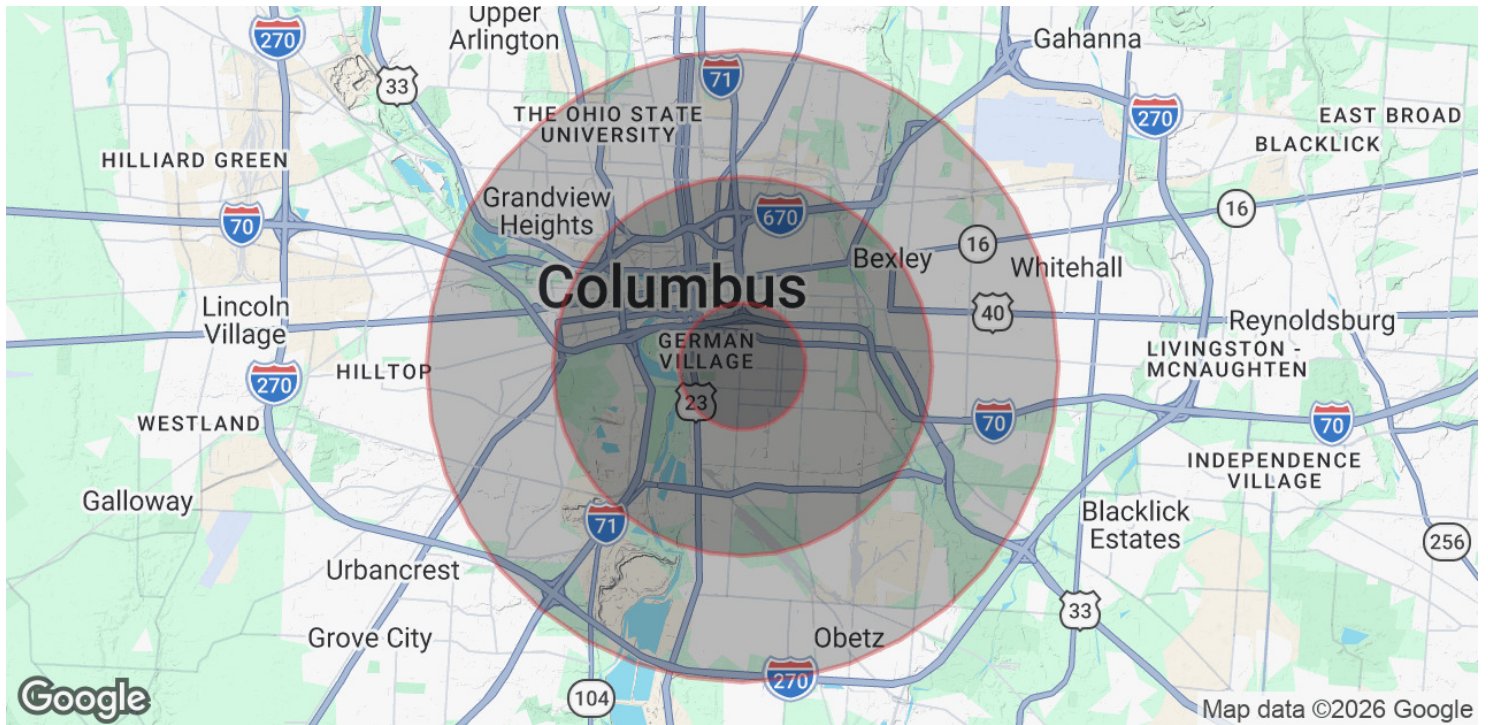
**John Mally**

614 629 5254 • [jmally@ohioequities.com](mailto:jmally@ohioequities.com)









POPULATION	1 MILE	3 MILES	5 MILES
Total Population	21,460	106,020	337,643
Average Age	38	38	36
Average Age (Male)	38	38	35
Average Age (Female)	37	38	36
HOUSEHOLDS & INCOME	1 MILE	3 MILES	5 MILES
Total Households	10,556	50,897	143,490
# of Persons per HH	2	2.1	2.4
Average HH Income	\$90,211	\$81,741	\$76,054
Average House Value	\$382,079	\$377,553	\$297,942

2020 American Community Survey (ACS)