
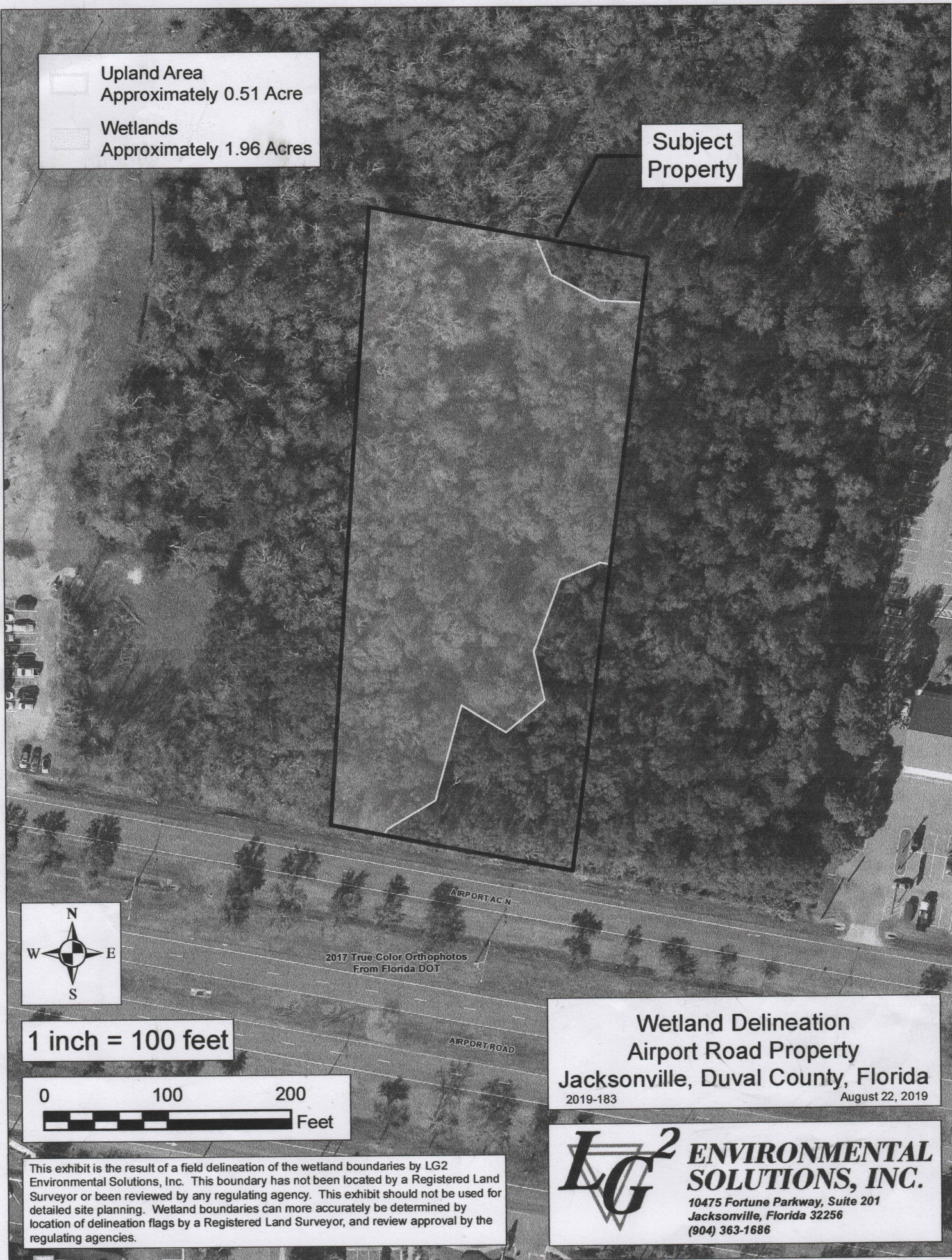
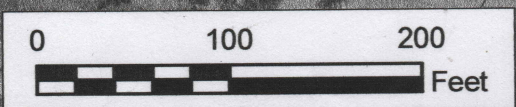
 Upland Area
 Approximately 0.51 Acre
 Wetlands
 Approximately 1.96 Acres

Subject Property



1 inch = 100 feet



2017 True Color Orthophotos
From Florida DOT

Wetland Delineation
Airport Road Property
Jacksonville, Duval County, Florida
 2019-183 August 22, 2019

This exhibit is the result of a field delineation of the wetland boundaries by LG2 Environmental Solutions, Inc. This boundary has not been located by a Registered Land Surveyor or been reviewed by any regulating agency. This exhibit should not be used for detailed site planning. Wetland boundaries can more accurately be determined by location of delineation flags by a Registered Land Surveyor, and review approval by the regulating agencies.


ENVIRONMENTAL SOLUTIONS, INC.
 10475 Fortune Parkway, Suite 201
 Jacksonville, Florida 32256
 (904) 363-1686