

For Lease

Office Warehouse with Shared Yard

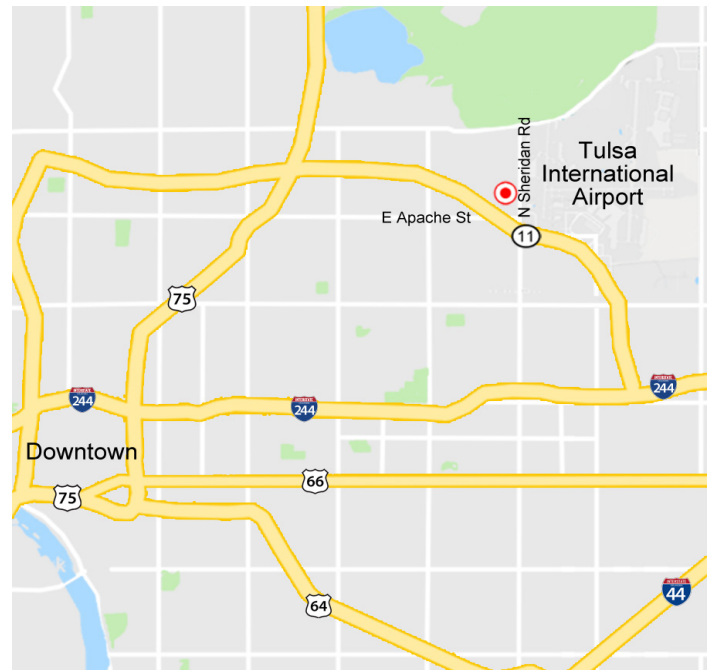
2816 N Sheridan Rd, Tulsa, OK 74115

WIGGIN
PROPERTIES, LLC



Property Features

- ±5,000 SF
- ±1,136 SF Office Including Reception Area, Showroom, (2) Private Offices, and (2) Restrooms
- 14' Eaves
- 17' to the Deck
- (2) 12' x 14' Overhead Doors
- Partially Climate Controlled Warehouse
- Shop Heaters
- 3 Phase Power
- Gated Entry
- Shared Fence Yard
- Close Proximity to Highway 11 & Highway 244
- Zoned IL (Light Industrial)



Call Shawna Hale, CCIM, or John Watchous at **918.935.2010**

shale@wigginprop.com | jwatchous@wigginprop.com | wigginprop.com

This material is provided for information purposes only. It is from sources believed to be reliable. However, Wiggin Properties makes no warranties or representations, expressed or implied, as to the accuracy or sufficiency of the information. It is presented subject to errors, omissions, changes or withdrawal without notice. Square footage is provided by the local County Assessor or the Owner. Photos and graphics with copyrights by Costar, Google, Wiggin Properties and independent contractors are used with permission.

For Lease

Office Warehouse with Shared Yard

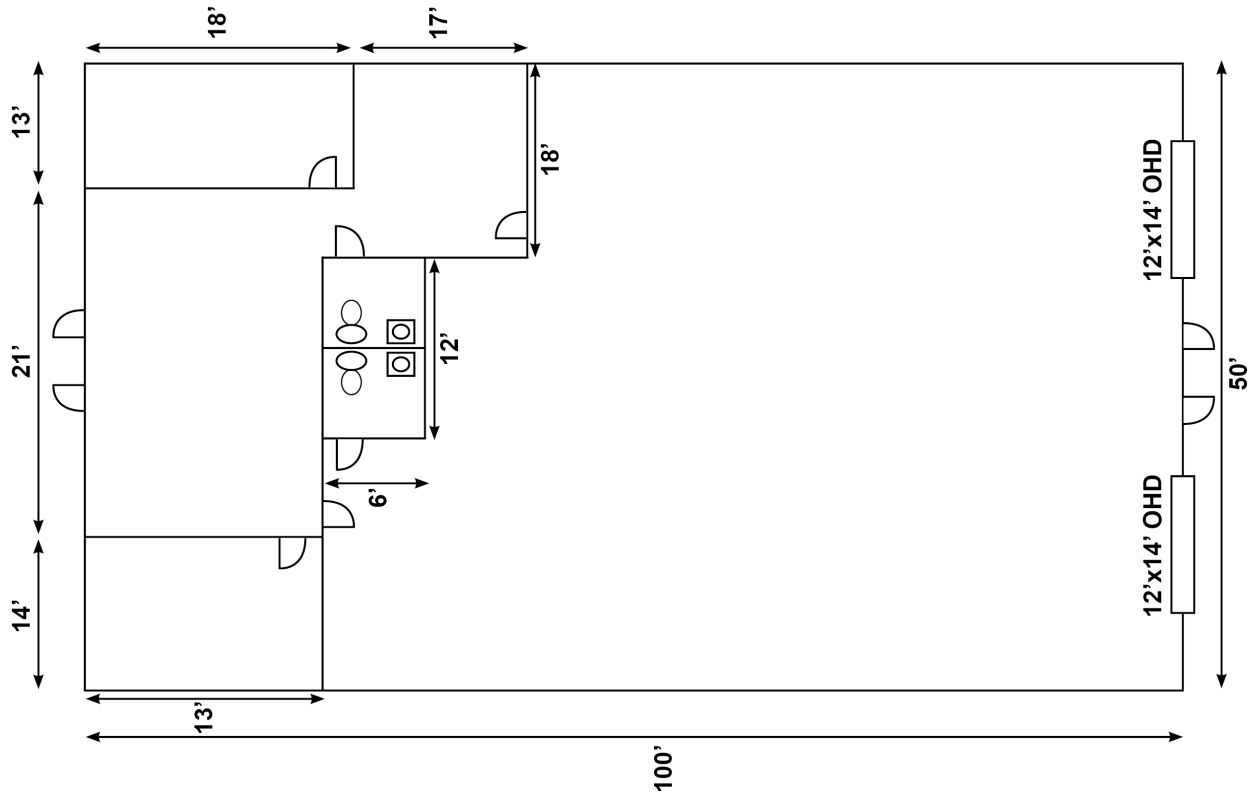


2816 N Sheridan Rd, Tulsa, OK 74115

Site Plan



Floor Plan



Call Shawna Hale, CCIM, or John Watchous at **918.935.2010**

shale@wiginprop.com | jwatchous@wiginprop.com | wiginprop.com

This material is provided for information purposes only. It is from sources believed to be reliable. However, Wiggin Properties makes no warranties or representations, expressed or implied, as to the accuracy or sufficiency of the information. It is presented subject to errors, omissions, changes or withdrawal without notice. Square footage is provided by the local County Assessor or the Owner. Photos and graphics with copyrights by Costar, Google, Wiggin Properties and independent contractors are used with permission.