

For Lease

Retail/Office Space

1345 Triad Center Dr.
St. Peters, MO 63376



- 1,200 SF end cap space available for lease
- 9,600 SF Multi-tenant Retail Center
- High-traffic location
- 1.16 acre lot with ample parking, 48 Surface Spaces. Parking Ratio: 5.00/1,000 SF
- Just North of Highway 94, located near busy 4-way intersection with Walgreens, QuickTrip, American Cleaners, Freddy's, Chillax St. Peters, Great Southern Bank, and Advance Auto Parts
- Lease Rate: \$18.00 PSF, Gross +Utilities



Danny Wapelhorst

Vice President

Phone: (636) 970-0330

dannyw@cissellmueller.com

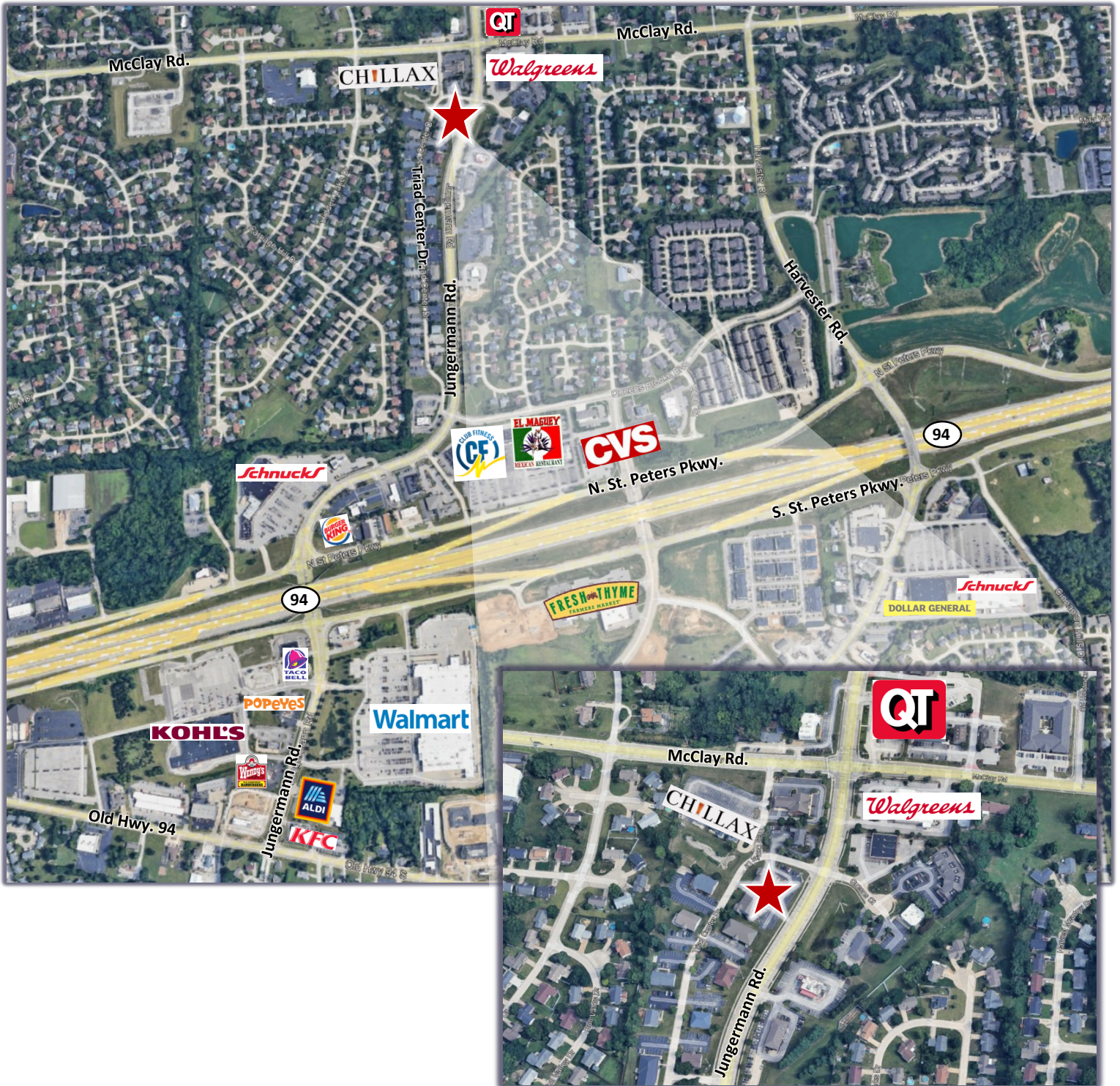


CISSELL MUELLER
COMPANY, L.L.C.

For Lease

Retail/Office Space

1345 Triad Center Dr.
St. Peters, MO 63376



Danny Wapelhorst

Vice President

Phone: (636) 970-0330

dannyw@cissellmueller.com



CISSELL MUELLER
COMPANY, L.L.C.