



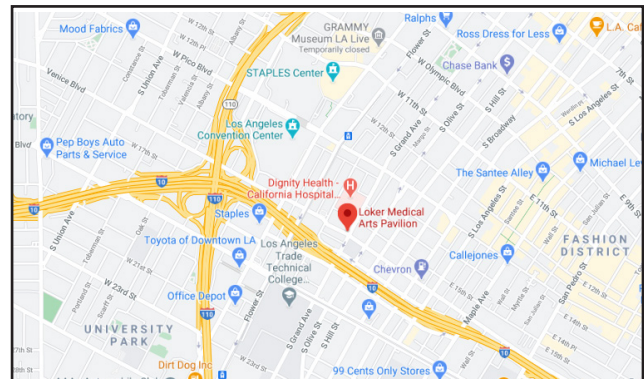
Loker Medical Arts Pavilion | 1513 S. Grand Ave. | Los Angeles, CA
Medical Office Suites Available

Available Suites	Rentable SF	Rental Rate
Suite 200	2,268	\$2.30/SF NNN
Suite 290	3,709	\$2.30/SF NNN
Suite 350	5,416	\$2.30/SF NNN

Term 5 to 10 years

Features

- 4-story, Class A building
- Located on campus at California Hospital Medical Center
- New 150,000 SF bed tower project scheduled to open in 2024**
- Immediate access to 10 & 110 freeways
- Available building signage
- New Security Camera System
- Move-in ready suite available



Contact

Erik Van't Hof
 (310) 517-4877
 erikv@medicalasset.com
 DRE#: 01055014

Mitch Yankowitz
 (310) 517-4861
 Mitchy@medicalasset.com
 DRE#: 01360137

www.medicalasset.com
(310) 530-6060

South Bay
 201 Continental Blvd., Ste. 210
 El Segundo, CA 90245

Downtown Los Angeles
 1400 S. Grand Ave., Ste. 808
 Los Angeles, CA 90015

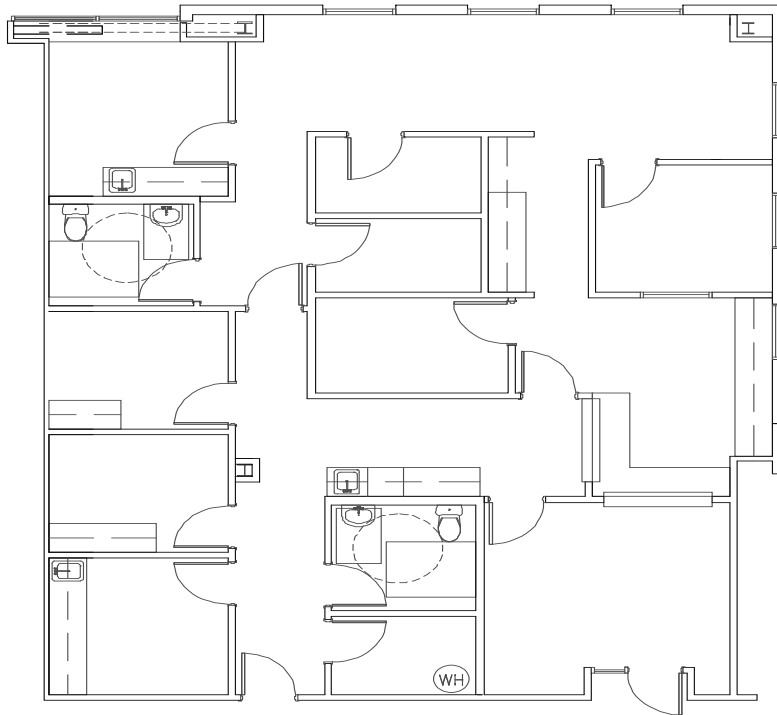
San Fernando Valley
 5411 Eriwanda Ave., Ste. 208
 Tarzana, CA 91356

Long Beach
 1040 Elm Ave., Ste. 308
 Long Beach, CA 90813



Loker Medical Arts Pavilion | 1513 S. Grand Ave. | Floor Plans

Suite 200
2,268 RSF



Suite 200 - Spec Suite





Loker Medical Arts Pavilion | 1513 S. Grand Ave. | Interior Suite Photos

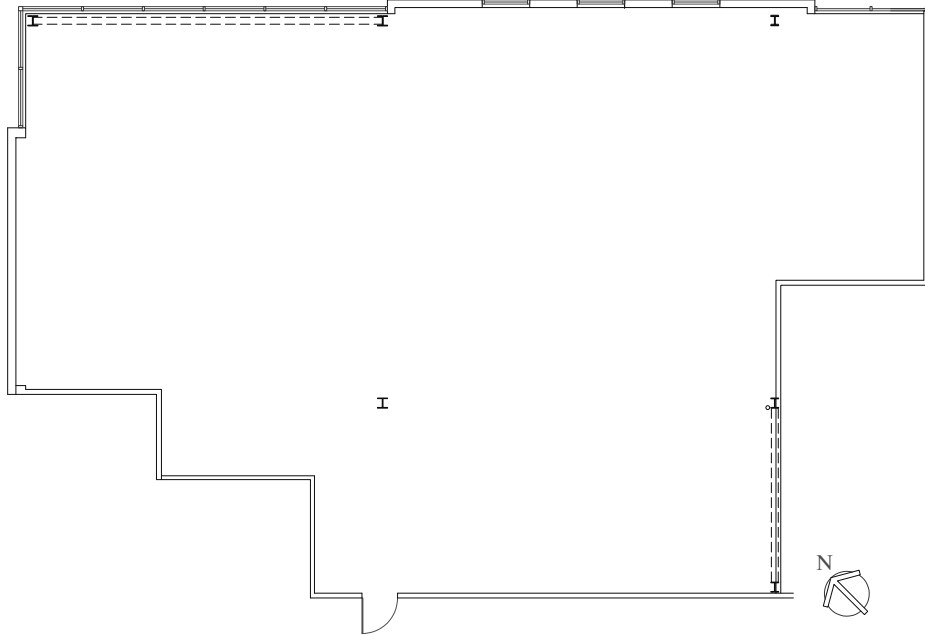
Suite 200 - Spec Suite Continued





Loker Medical Arts Pavilion | 1513 S. Grand Ave. | Floor Plans

Suite 290
3,709 RSF



Suite 350
5,416 RSF

