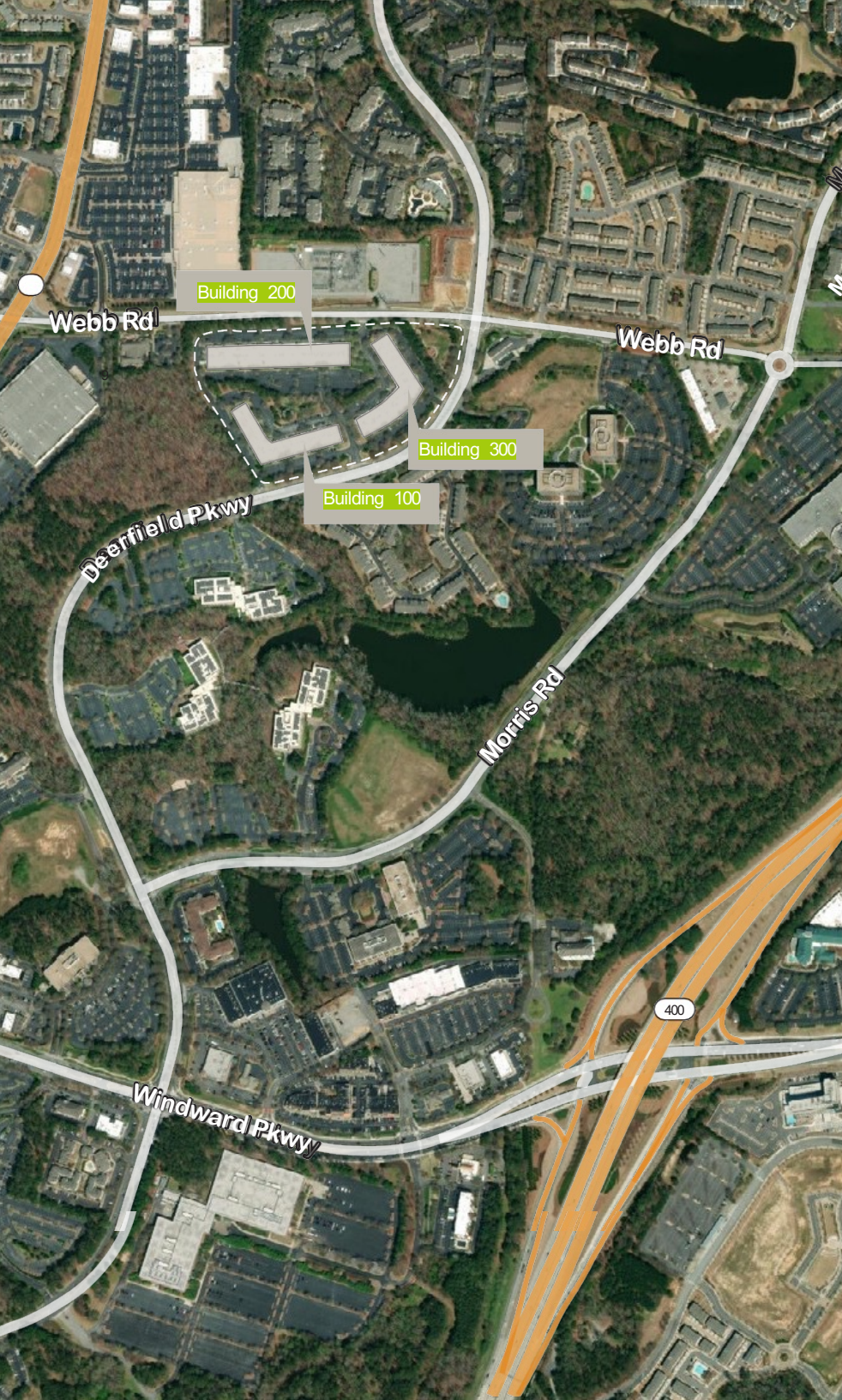


THE HLB
— AT DEERFIELD

13000 DEERFIELD PARKWAY
MILTON, GA 30004



NEWMARK



OVERVIEW

Located just north of Windward Parkway, The Hub at Deerfield is a three single-story building campus featuring recent renovations, and new branding and wayfinding.

The Hub at Deerfield offers convenience to GA-400 and Windward Parkway, along with direct access to dozens of surrounding dining, shopping and entertainment opportunities, including both Avalon and Halcyon mixed-use developments.



PROPERTY HIGHLIGHTS



THREE SINGLE-STORY BUILDINGS



NEW BRANDING AND WAYFINDING



UPDATED FACADE

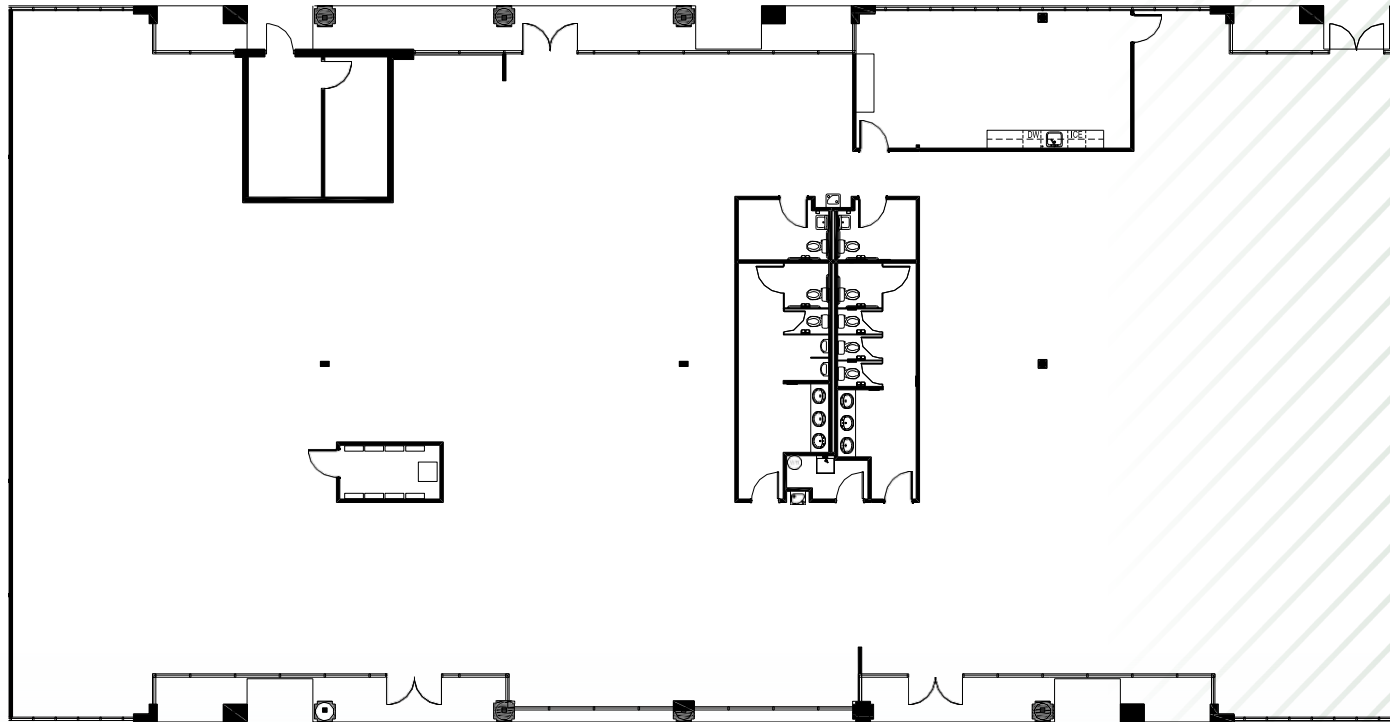


4.4/1,000 PARKING RATIO

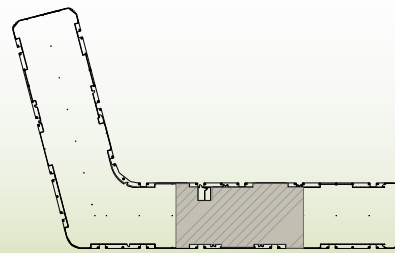


BUILDING 100

Suite 107



12,017 SF
AVAILABLE



KEY PLAN

13000 DEERFIELD PARKWAY
MILTON, GA 30004

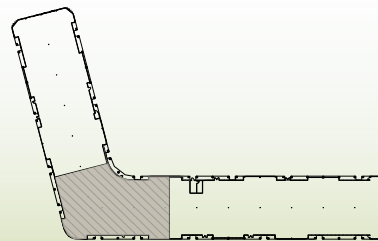
BUILDING 100

Suite 108



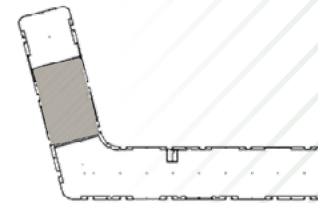
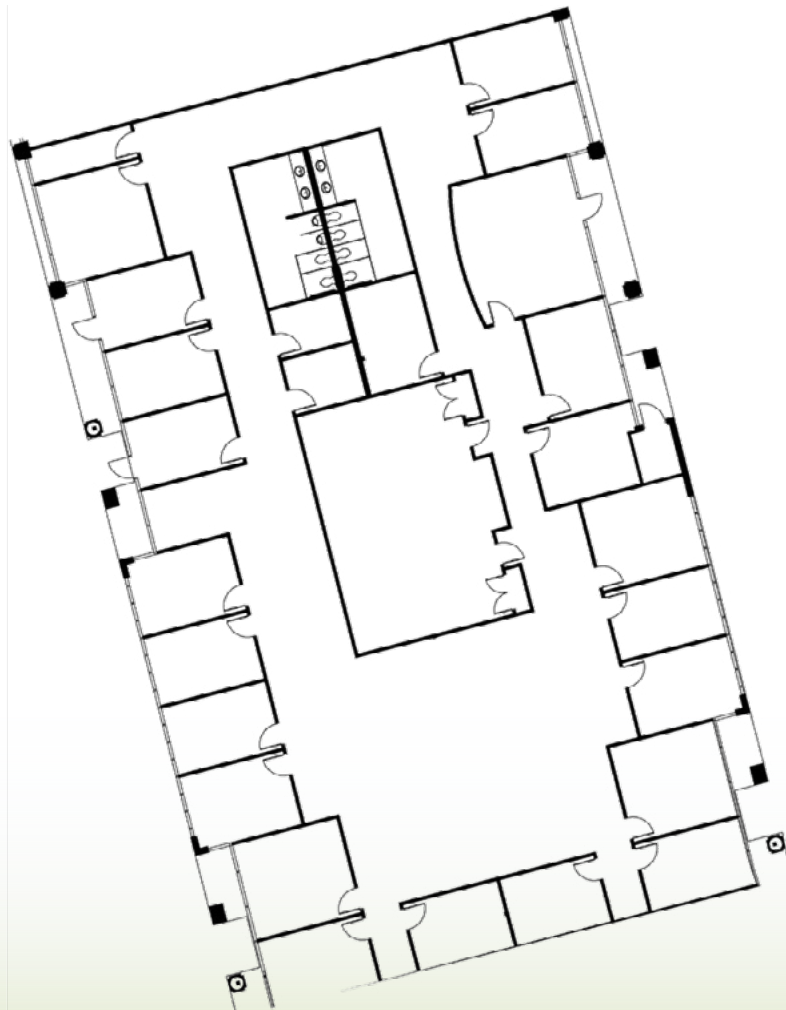
11,792 SF
AVAILABLE

13000 DEERFIELD PARKWAY
MILTON, GA 30004



KEY PLAN

BUILDING 100
Suite 110



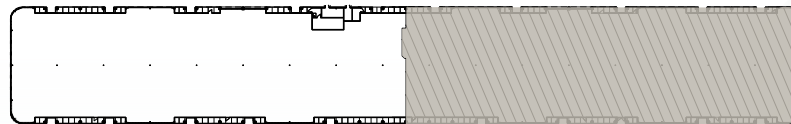
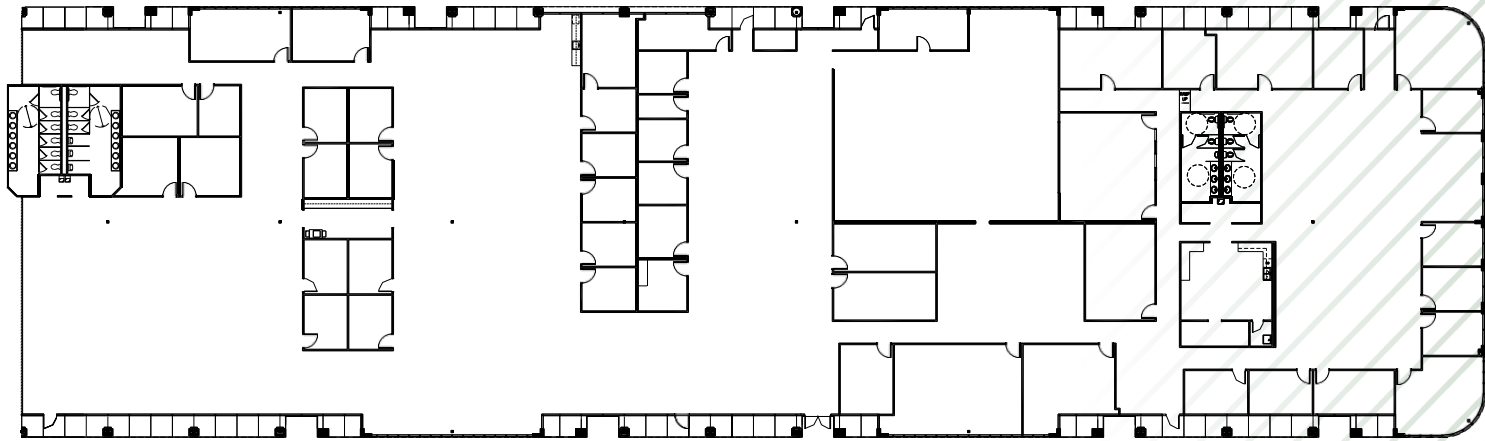
KEY PLAN

10,083 SF
AVAILABLE

13000 DEERFIELD PARKWAY
MILTON, GA 30004

BUILDING 200

Suite 202



KEY PLAN

34,065 SF
AVAILABLE

13000 DEERFIELD PARKWAY
MILTON, GA 30004

AMENITIES MAP

DINING

- | | | |
|--------------------------|-----------------------------|-------------------------------|
| 1 Arby's | 10 QueBarbecue | 19 Crust Pasta & Pizzeria |
| 2 Chick-F-I-A | 11 Pizza Hut | 20 Buffalo Wild Wings |
| 3 McDonald's | 12 Taco Mac | 21 The Cheesecake Factory |
| 4 Qdoba Mexican | 13 Another Broken Egg Cafe | 22 Dave & Buster's |
| 5 Starbucks | 14 Zyka Alpharetta | 23 P.F. Chang's |
| 6 Local Expedition Grill | 15 McDonald's | 24 Pappadeaux Seafood Kitchen |
| 7 Cafe DeBono | 16 Cookout | 25 Rays at Killer Creek |
| 8 Campania Alpharetta | 17 The Nest Cafe | 26 Wendy's |
| 9 Moezuma Mexican Grill | 18 Maple Street Biscuit Co. | |

RETAIL

- 27 Target
- 28 Kroger
- 29 Walmart Supercenter
- 30 Home Depot
- 31 Costco
- 32 Publix
- 33 Avalon
- 34 North Point Mall

HOSPITALITY

- | | |
|----------------------------------|------------------------------|
| 35 Hilton Alpharetta Atlanta | 43 Embassy Suites by Hilton |
| 36 Hyatt Place Atlanta | 44 Hilton Garden Inn Atlanta |
| 37 Sonesta Suites Atlanta | 45 Holiday Inn Express |
| 38 Doubletree Inn by Hilton | 46 Aloft Alpharetta |
| 39 Home2 Suites by Hilton | 47 Homewood Suites by Hilton |
| 40 Courtyard Marriott Atlanta | 48 Hamton Inn Alpharetta |
| 41 EVEN Hotel Alpharetta | |
| 42 Towneplace Suites by Marriott | |

FINANCIAL

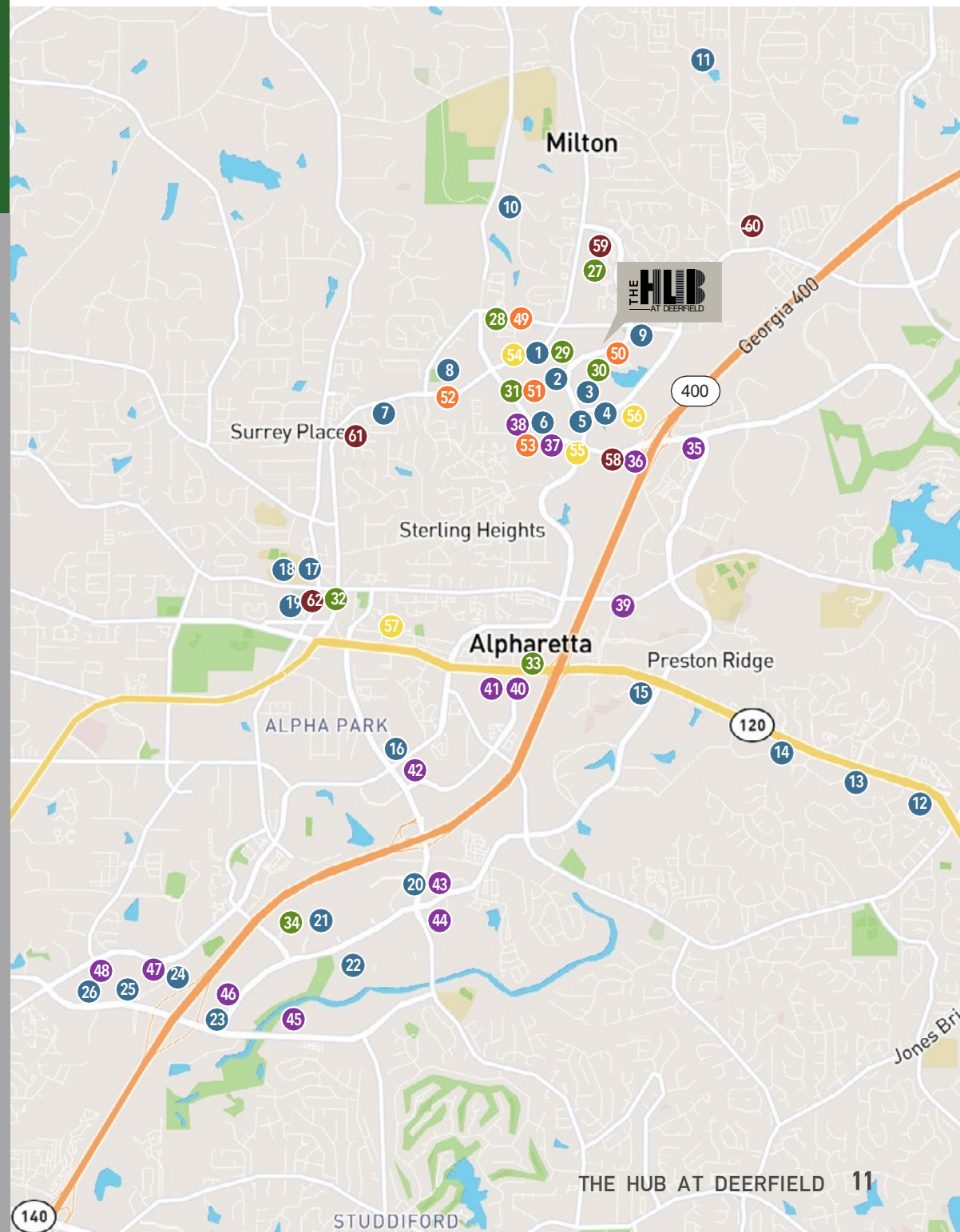
- 49 Wells Fargo Bank
- 50 PNC Bank
- 51 Chase Bank
- 52 Bank of America
- 53 SunTrust Bank

BUSINESS CONVENIENCE

- 54 The UPS Store
- 55 FedEx Office Print & Ship
- 56 Office Depot
- 57 United States Post Office

FITNESS

- 58 LA Fitness
- 59 Planet Fitness
- 60 Functional Fitness Guru
- 61 Movology Fitness
- 62 Body by Design Fitness





FOR MORE INFORMATION,
PLEASE CONTACT:

Brad Kirschner
Senior Managing Director
+1 404 509 5030
brad.kirschner@nmrk.com

R.J. Zurak
Senior Managing Director
+1 770 552 2420
rj.zurak@nmrk.com

Stewart Thrash
Senior Managing Director
+1 404 504 5926
stewart.thrash@nmrk.com

Morgan McMenamy
Associate
+1 404 771 1199
morgan.mcmenamy@nmrk.com



NEWMARK