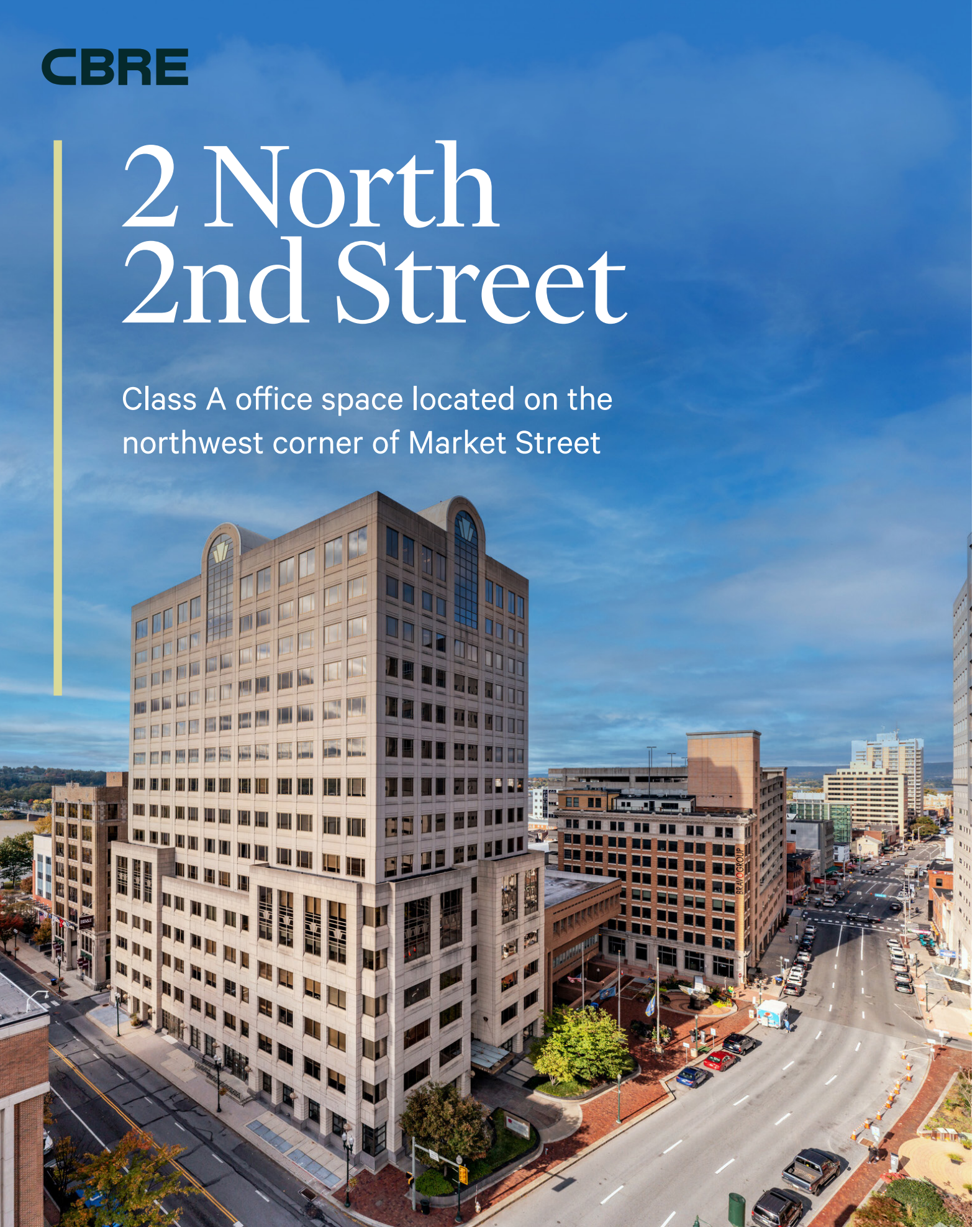


**CBRE**

# 2 North 2nd Street

Class A office space located on the  
northwest corner of Market Street





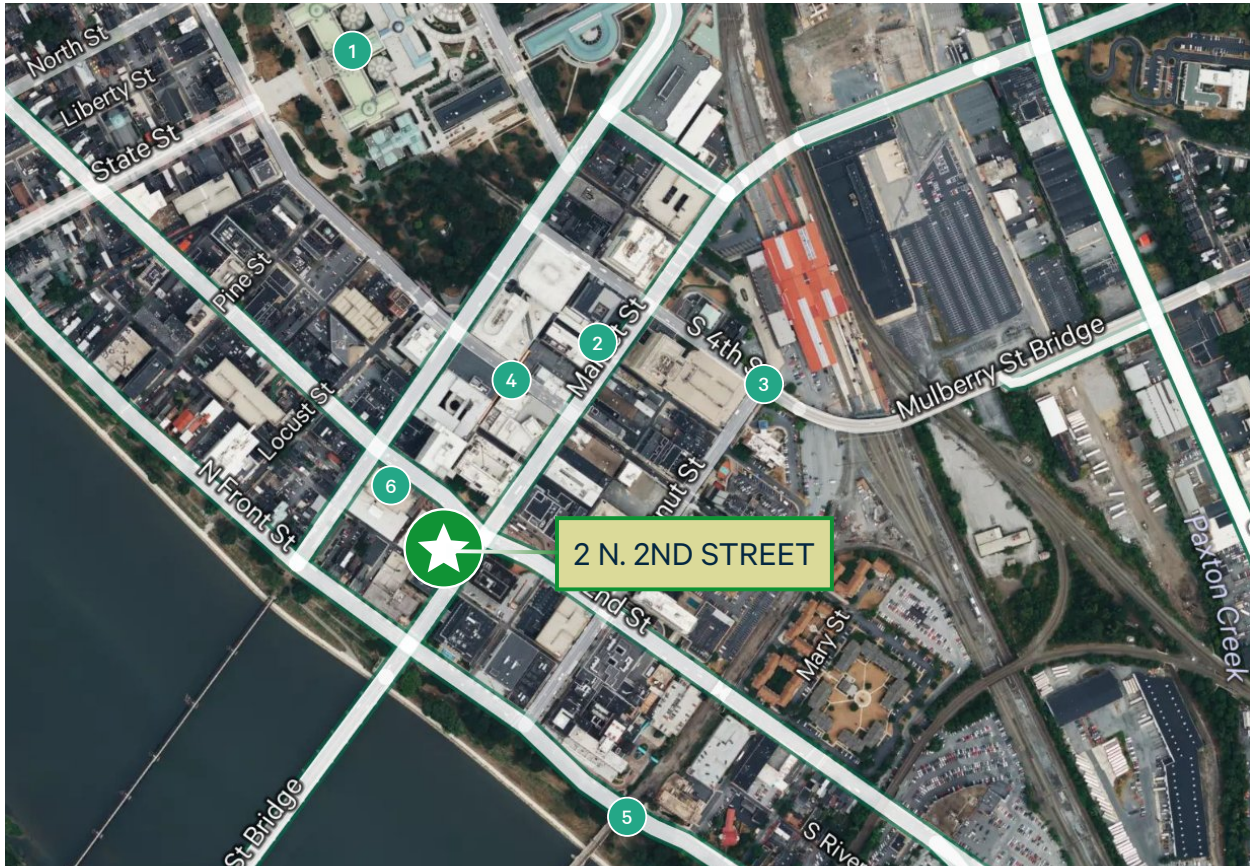
# Highlights

## 2 North 2nd Street, Harrisburg

Unbeatable opportunity to lease Class A office space within one of downtown Harrisburg's most prestigious office properties. The building provides on-site management and security, on-site parking and an array of amenities.

Located on the northwest corner of Market Street in downtown Harrisburg. Within a short walk to PA Capital Complex, Strawberry Square, Amtrak train station, City Island, Riverfront Park, and Second Street's Restaurant Row. Excellent access to Interstates 83 and 81, Route 22, and the West Shore.





# Nearby Amenities

## 1. PA State Capital Complex

501 N 3rd St, Harrisburg, PA 17120

## 2. Strawberry Square

320 Market St, Harrisburg, PA 17101

## 3. Amtrak Station

4th St &, Chestnut St, Harrisburg, PA 17101

## 4. City Island

Harrisburg, PA 17101

## 5. Riverfront Park

200 S Front St, Harrisburg, PA 17104

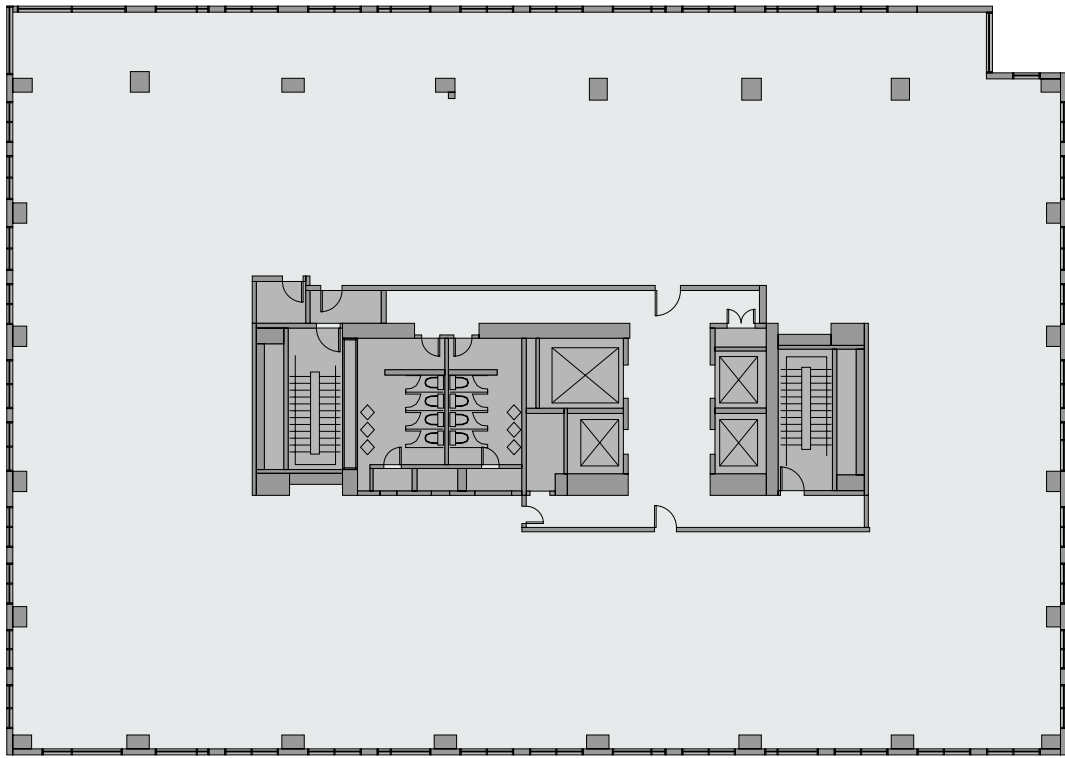
## 6. 2nd Street Restaurant Row

22 North, 2nd Street, Harrisburg, PA 17101

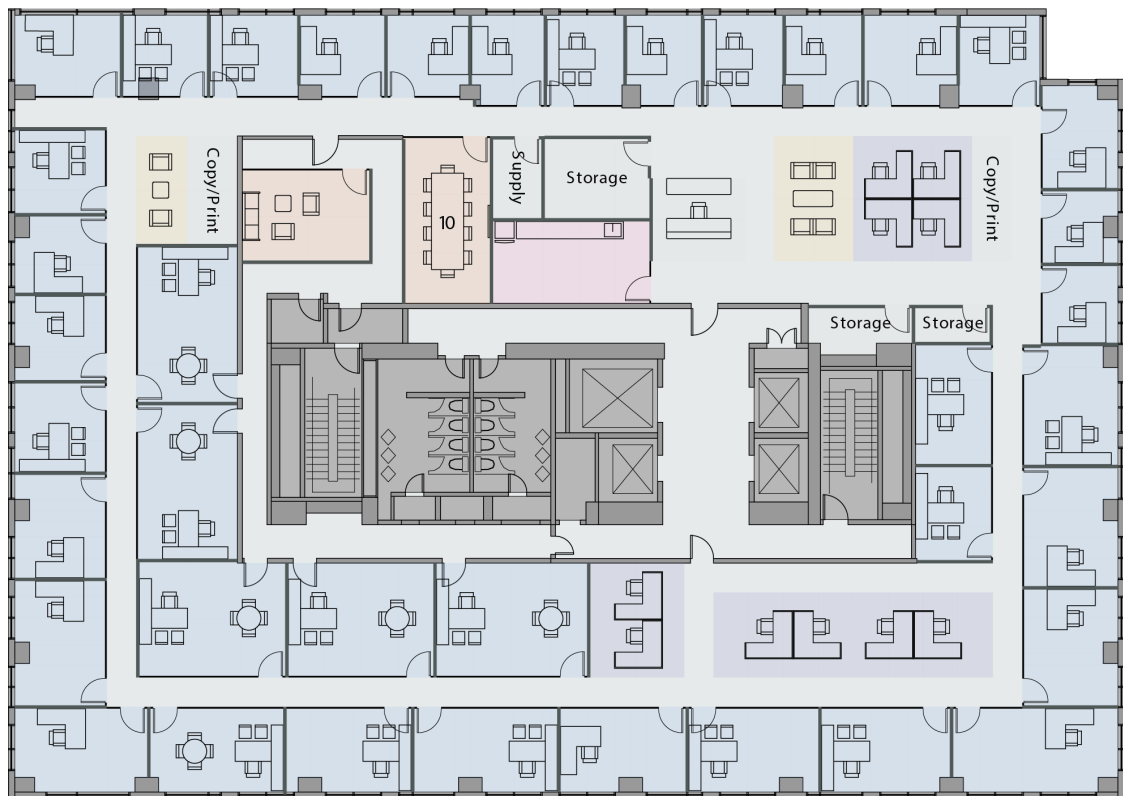
- **15** Story Class A Office Building
- Up to **80,000 +/- SF** Available
- On-Site Parking
- Flexible Floorplans
- Susquehanna River Views
- On-Site Management
- Full-Service Gross Lease
- Walkable Amenities
- Riverfront Trail
- Easy Access to Route I-83 / I-81

# Typical Floor

8th Floor, 14,485 RSF



Existing Plan



Test Fit Option

# Available Space

2 North 2nd Street, Harrisburg



Available

# Views



Main  
Entrance



Office  
Area



Lobby



Kitchen Area

# CBRE

# Thank You



**Jeremy Shyk**  
Senior Vice President  
+1 717-579-8611  
jeremy.shyk@cbre.com

© 2024 CBRE, Inc. All rights reserved. This information has been obtained from sources believed reliable but has not been verified for accuracy or completeness. CBRE, Inc. makes no guarantee, representation or warranty and accepts no responsibility or liability as to the accuracy, completeness, or reliability of the information contained herein. You should conduct a careful, independent investigation of the property and verify all information. Any reliance on this information is solely at your own risk.

[www.cbre.com](http://www.cbre.com)

