

88 1st STREET

SAN FRANCISCO, CA

2,926 SF Ground Floor
Retail/Restaurant Space

HIGH FOOT TRAFFIC LOCATION
ACROSS FROM SALESFORCE PARK



 **CALCO**
COMMERCIAL, INC.
calcosf.com

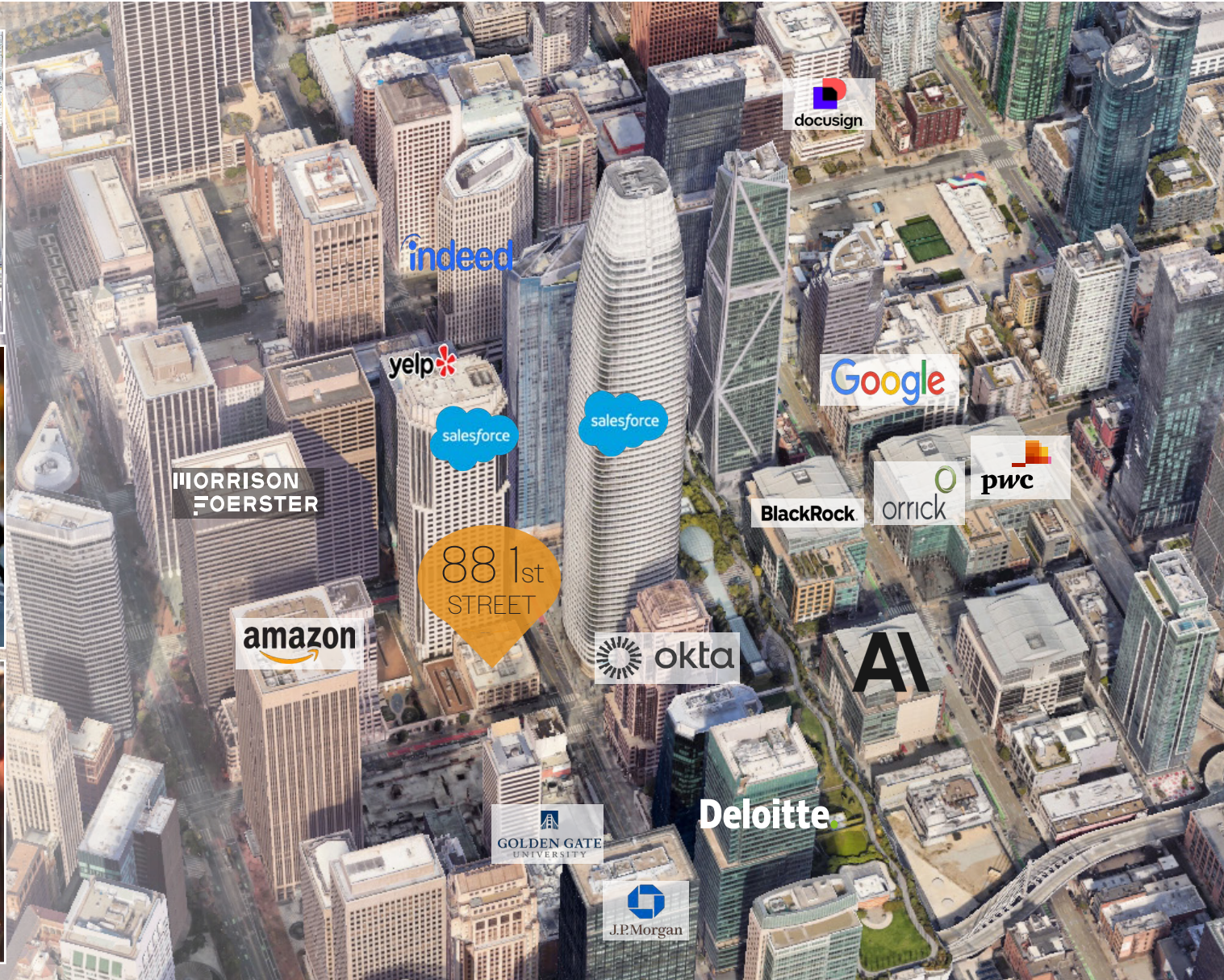
Salesforce Transit



Top Business Area



Thriving Retail Location



RESTAURANT OWNERS **DREAM LOCATION**

88 1st St offers restaurant owners an unbeatable combination of prestige and practicality. Nestled in the heart of San Francisco's bustling Financial District, the location boasts excellent visibility and access to a high-density area frequented by professionals, residents, and tourists alike.

With consistent foot traffic, proximity to landmarks like Salesforce Tower, and easy access to public transit, this space provides the perfect setting for a thriving restaurant. Surround yourself with a dynamic mix of successful businesses and take advantage of a location designed to elevate your brand and customer experience.



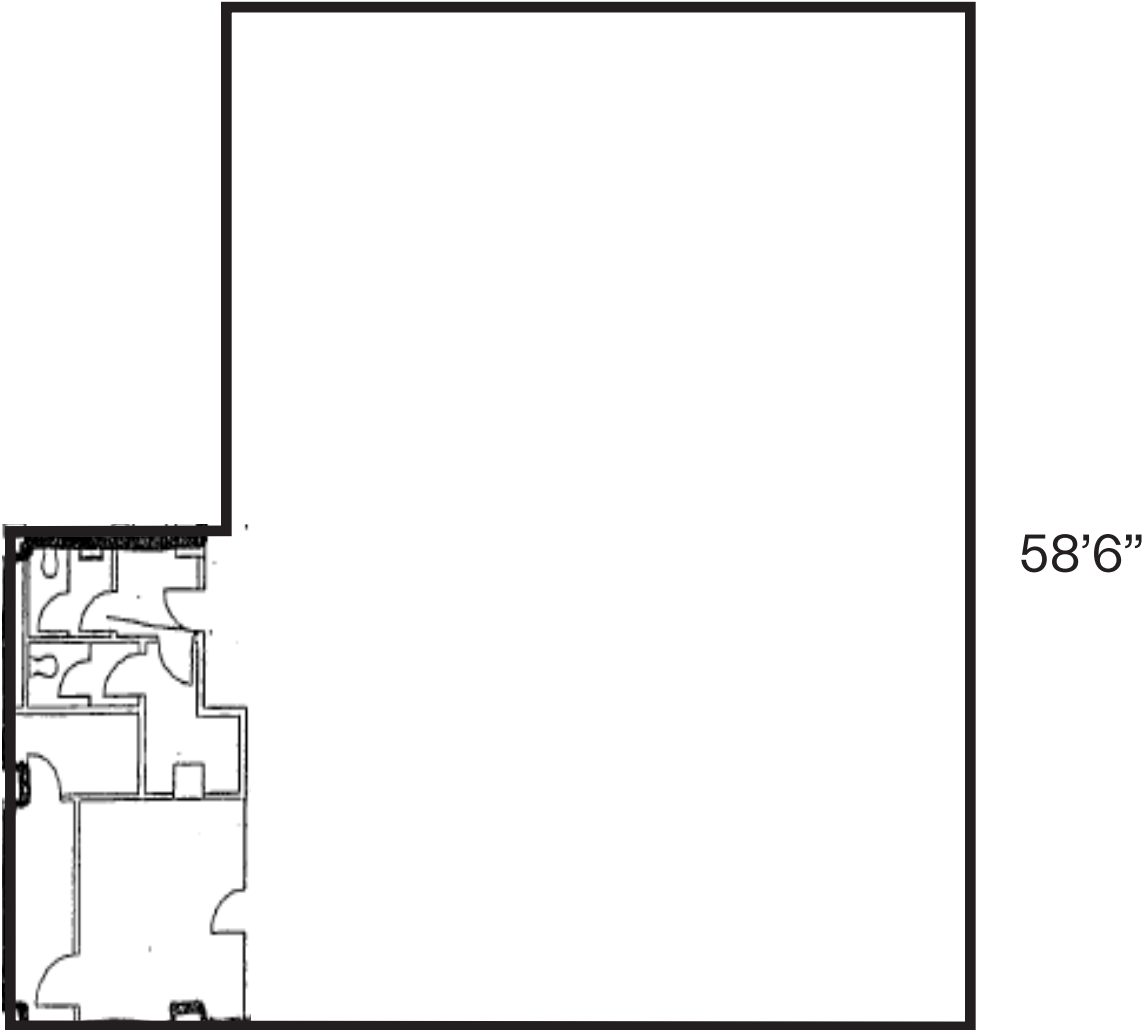
88 1st STREET

PROPERTY HIGHLIGHTS

- ± 2,926 RSF ground floor space
- Restaurant infrastructure in place
- Two (2) large hoods w/ venting
- Commercial kitchen w/ walk-in freezer
- Multiple floor drains
- Ceiling Height: 13'9"
- Abundant natural light
- Blade signage available
- Unparalleled branding opportunity
- Views of Salesforce Park
- Unique flagship opportunity

Mission St

1st St



53'7"

58'6"

88 1st Street

Amenities Map



1 LinkedIn

4 Salesforce Tower

7 SFMoMA

10 Crunch Fitness

13 Sweetgreen

16 Barcha

2 Blue Bottle Coffee

5 Facebook

8 Riverbed Technology

11 Mascone Center

14 Sammy's

17 Rincon Park

3 Transbay Terminal Park

6 BART

9 Whole Foods

12 Ferry Building

15 International Smoke

18 Angler

88 1st St
San Francisco, CA

Mission St

For leasing information

Charlie Cutler, Partner
415.850.4935
charlie@calcosf.com
LIC# 02026787

Mario Previtali, Senior VP
415.755.8905
mario@calcosf.com
LIC# 01902075

Lindsay Cutler, Associate
714.322.9194
lindsay@calcosf.com
LIC# 02198286



CALCO
COMMERCIAL, INC.