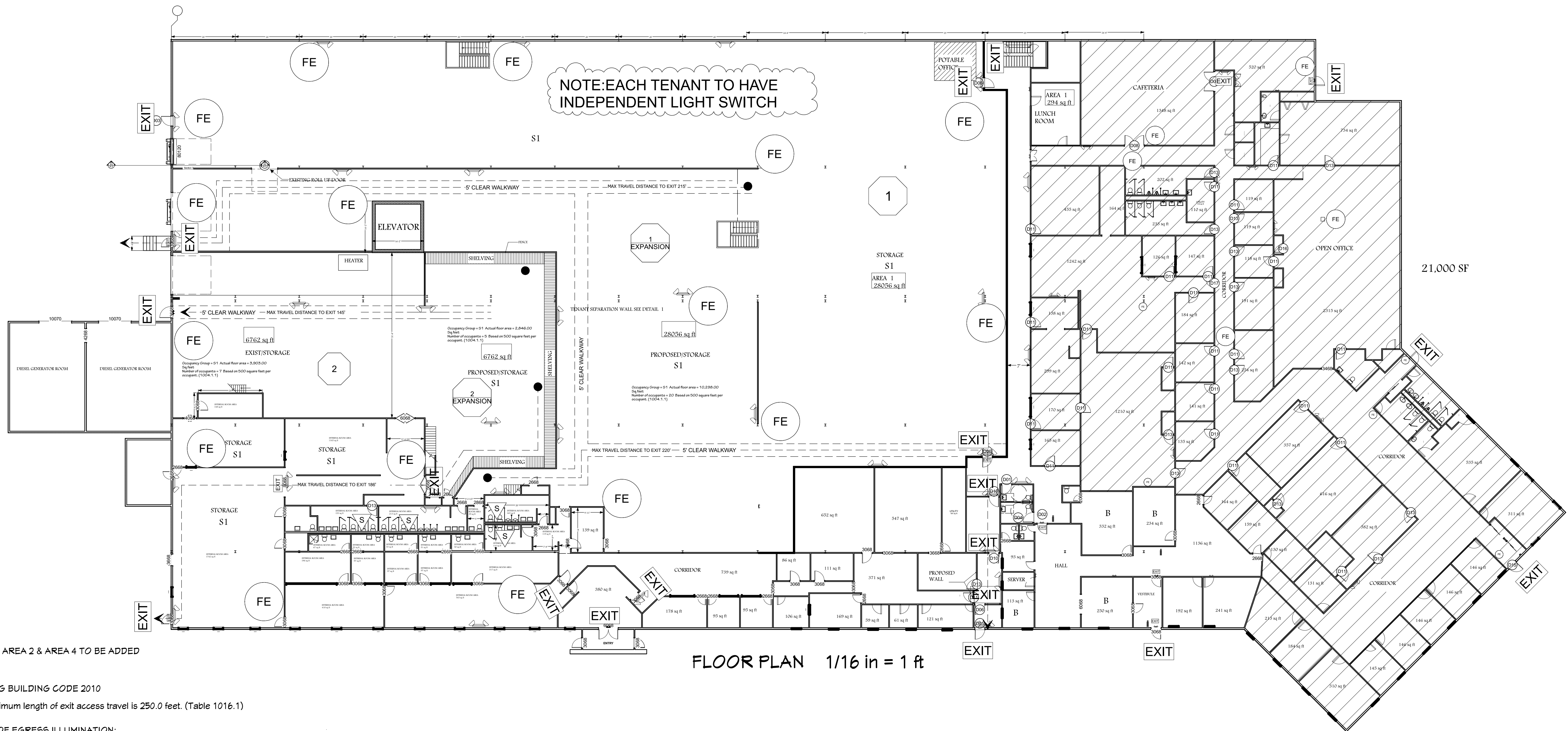


PROPOSED TENANT SPACE EXPANSION & PARTITION WALL



SCOPE: AREA 2 & AREA 4 TO BE ADDED

EXISTING BUILDING CODE 2010

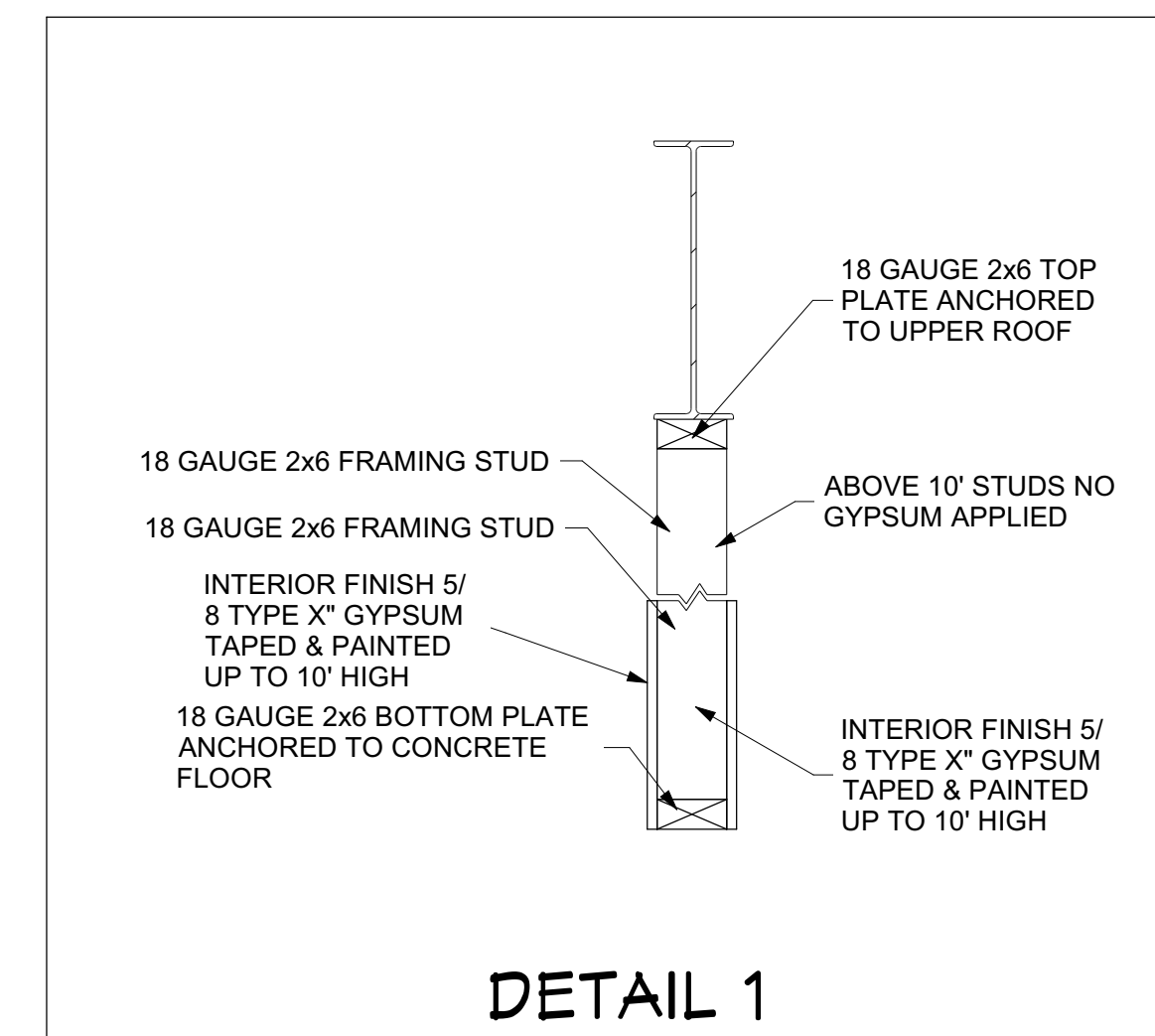
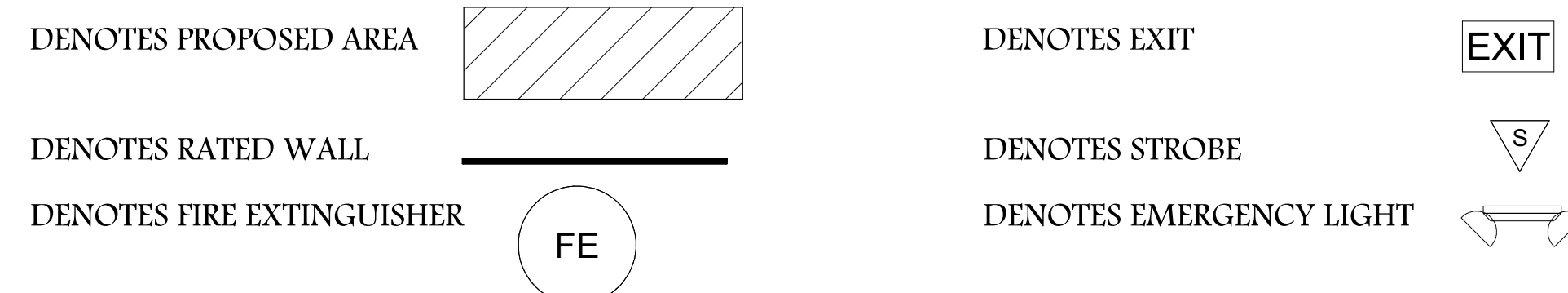
The maximum length of exit access travel is 250.0 feet. (Table 1016.1)

MEANS OF EGRESS ILLUMINATION:

- The means of egress, including the exit discharge, shall be illuminated at all times the building space served by the means of egress is occupied. (1006.1)
 - The means of egress illumination shall not be less than 1 foot-candle at the walking surface level. (1006.2)
- See section 1006.3 for emergency power requirements.

EXIT SIGNS

- Signs shall be placed where the exit or the path of egress travel is not immediately visible. No point in a corridor or passageway to be more than 100 feet from an exit sign. (1011.1)
- Exception 2: Main exterior exit doors which obviously and clearly are identifiable as exits need not be signed when approved.
- Exit signs shall be internally or externally illuminated. (1011.2)
- Exit sign shall be illuminated at all times including during loss of primary power. (1011.4 & 1011.5.3)



NUMBER	LABEL	QTY	FLOOR	SIZE	WIDTH	HEIGHT	DESCRIPTION	DOOR SCHEDULE	HANDLE	INTERIOR
D01	3068	1	2	3068 R IN	36"	80"	HINGED-DOOR P04	HANDLE: EXTERIOR	HANDLE: PULL HANDLE	HANDLE: PULL HANDLE
D02		1	2	3068 L IN	36"	80"	HINGED-DOOR P04	HANDLE: PANIC HARDWARE YALE EXIT DEVICE 7206F X PB	HANDLE: PULL HANDLE	HANDLE: PULL HANDLE
D03		1	2	3068 R EX	36"	80"	EXT. HINGED-DOOR S01	HANDLE: KNOB	HANDLE: PANIC HARDWARE YALE EXIT DEVICE 7206F X PB	HANDLE: PANIC HARDWARE YALE EXIT DEVICE 7206F X PB
D04	3068	1	2	3068 L IN	36"	80"	HINGED-DOOR P04	HANDLE: PULL HANDLE	HANDLE: PULL HANDLE	HANDLE: PULL HANDLE
D05	3/4 HR FIRE RATED	1	2	3068 R EX	36"	80"	EXT. HINGED-DOOR E21	HANDLE: PANIC HARDWARE YALE EXIT DEVICE 7206F X PB	HANDLE: PULL HANDLE	HANDLE: PULL HANDLE
D06	3/4 HR FIRE RATED	3	2	3068 R IN	36"	80"	HINGED SELF CLOSING	HANDLE: PANIC HARDWARE YALE EXIT DEVICE 7206F X PB	HANDLE: PULL HANDLE	HANDLE: PULL HANDLE
D07	8070	1	2	8070	96"	84"	GARAGE-SLAB			
D08	6068	2	2	6068 L/R IN	72"	80"	DOUBLE HINGED-DOOR	HANDLE: KNOB (2)	HANDLE: KNOB (2)	HANDLE: KNOB (2)
D09	3/4 HR FIRE RATED	1	1	3068 R IN	36"	80"	HINGED SELF CLOSING	HANDLE: PULL HANDLE	HANDLE: PANIC HARDWARE YALE EXIT DEVICE 7206F X PB	HANDLE: PANIC HARDWARE YALE EXIT DEVICE 7206F X PB
D10	3/4 HR FIRE RATED	2	2	3068 L IN	36"	80"	HINGED SELF CLOSING	HANDLE: PANIC HARDWARE YALE EXIT DEVICE 7206F X PB	HANDLE: PULL HANDLE	HANDLE: PULL HANDLE
D11	3068	24	2	3068 R IN	36"	80"	HINGED-DOOR P04	HANDLE: KNOB	HANDLE: KNOB	HANDLE: KNOB
D12		1	1	3068 R EX	36"	80"	EXT. HINGED-DOOR S01	HANDLE: KNOB	HANDLE: PANIC HARDWARE YALE EXIT DEVICE 7206F X PB	HANDLE: PANIC HARDWARE YALE EXIT DEVICE 7206F X PB

REVISION TABLE	NUMBER	DATE	REVISION BY	DESCRIPTION

FLOOR PLAN

334 County Rt. 49

DRAWINGS PROVIDED BY:
Jerry Sherman Architect

DATE:

5/18/2015

SCALE:

SHEET:

A-1