

# HESPERIAN BUSINESS PARK



RENOVATIONS UNDERWAY

2286-2298, 2302-2332 & 2512 TRIPALDI WAY | HAYWARD, CA 94545

## FOR MORE INFORMATION:

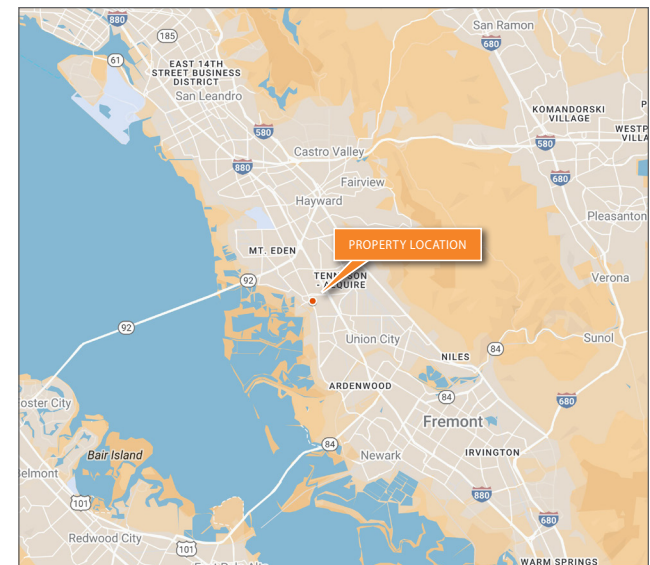
CHRIS SCHOFIELD, SIOR  
510-903-7608  
cschofield@lee-associates.com  
LIC# 01326198 / CORP. ID# 02069956

LEE & ASSOCIATES OAKLAND  
COMMERCIAL REAL ESTATE, INC.  
555 12th Street, Suite 1725  
Oakland, CA 94607  
www.lee-associates.com



## PROPERTY FEATURES

- 82,562± SF light industrial project
- Extensive exterior improvements planned
- Fully sprinklered
- 18' clear height
- 2.5/1,000 parking ratio
- Ability to expand within business park

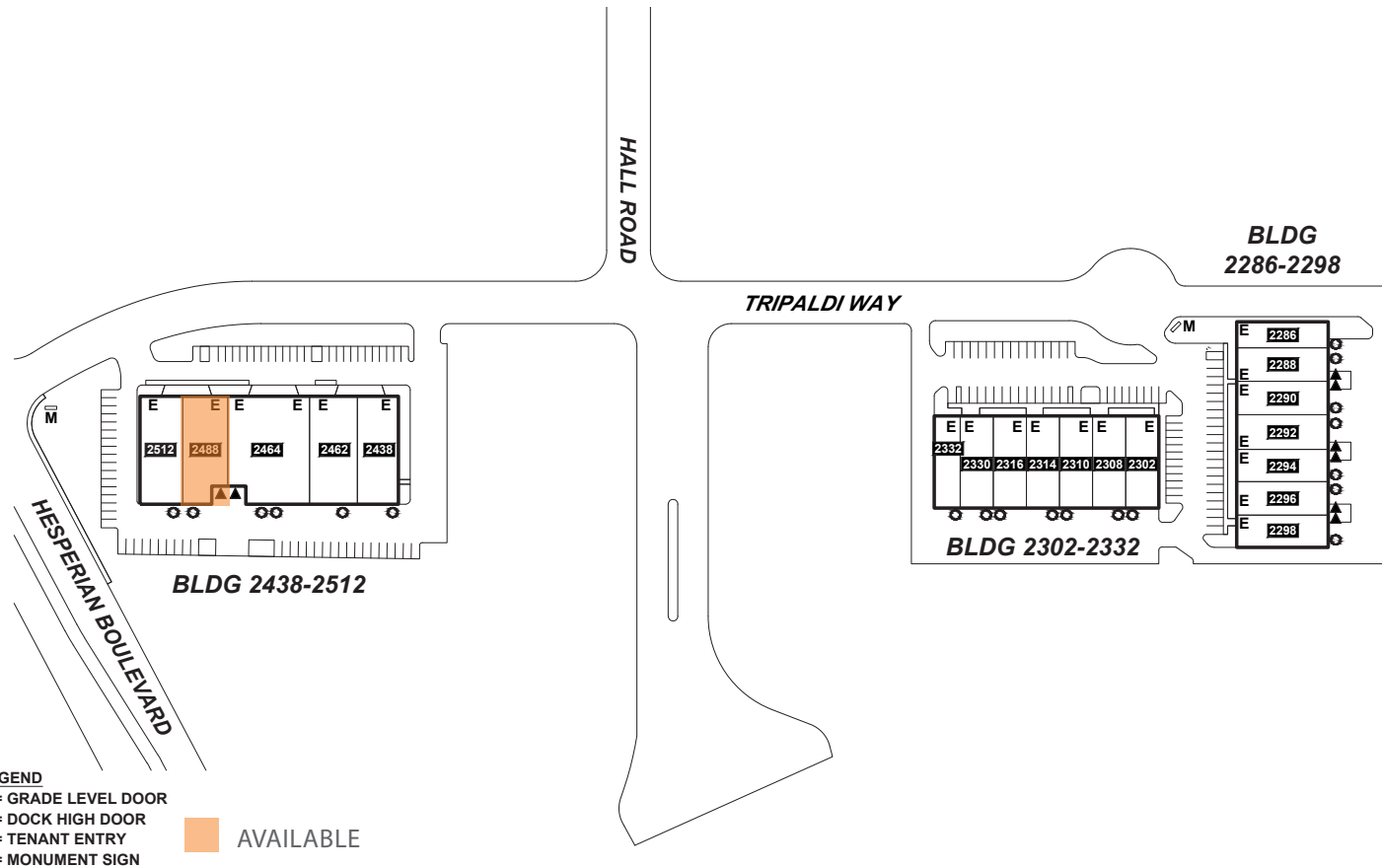


The information contained herein is believed to be accurate but is not warranted as to its accuracy and may change or be updated without notice. Seller or land lord makes no representation as to the environmental condition of the property and recommends purchaser's or tenant's independent investigation.

# HESPERIAN BUSINESS PARK

## SITE PLAN

UNDER NEW OWNERSHIP



### FOR MORE INFORMATION

CHRIS SCHOFIELD, SIOR  
 510-903-7608  
 cschofield@lee-associates.com  
 LIC# 01326198 / CORP. ID# 02069956

LEE & ASSOCIATES OAKLAND  
 COMMERCIAL REAL ESTATE, INC.  
 555 12th Street, Suite 1725  
 Oakland, CA 94607  
 www.lee-associates.com

### AVAILABILITIES

SUITE	TOTAL SF±	OFFICE /WAREHOUSE SF ±	FEATURES
2488	5,284	1,617 / 3,667	1 grade level door, 1 dock high door, 16'-18' clear height   Available July 1, 2026

HESPERIAN BUSINESS PARK  
 TRIPALDI WAY  
 HAYWARD, CA 94545



# HESPERIAN BUSINESS PARK

UNDER NEW OWNERSHIP



## FOR MORE INFORMATION

CHRIS SCHOFIELD, SIOR  
510-903-7608  
cschofield@lee-associates.com  
LIC# 01326198 / CORP. ID# 02069956

LEE & ASSOCIATES OAKLAND  
COMMERCIAL REAL ESTATE, INC.  
555 12th Street, Suite 1725  
Oakland, CA 94607  
www.lee-associates.com

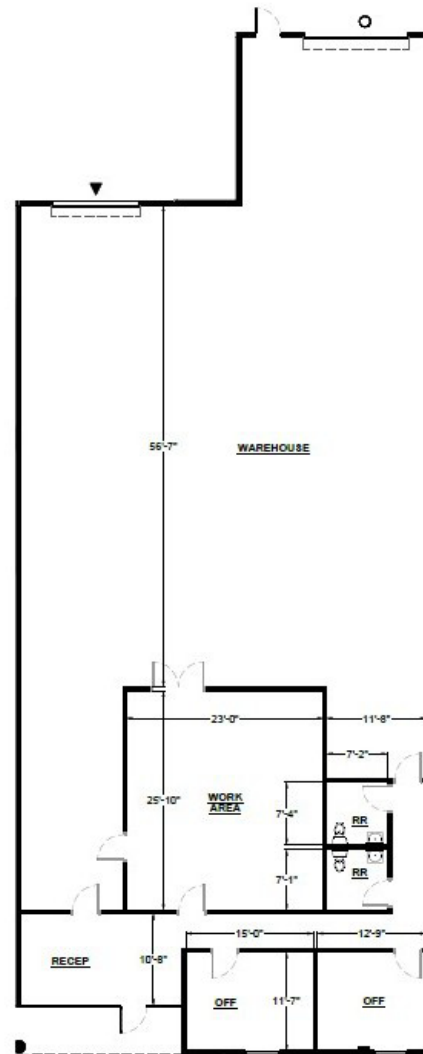
HESPERIAN BUSINESS PARK  
TRIPALDI WAY  
HAYWARD, CA 94545

 **LEE &  
ASSOCIATES**  
COMMERCIAL REAL ESTATE SERVICES

# 2488 TRIPALDI WAY

5,284 SF / 1,617 SF OFFICE / 3,667 WAREHOUSE

UNDER NEW OWNERSHIP



## FOR MORE INFORMATION

CHRIS SCHOFIELD, SIOR  
510-903-7608  
cschofield@lee-associates.com  
LIC# 01326198 / CORP. ID# 02069956

LEE & ASSOCIATES OAKLAND  
COMMERCIAL REAL ESTATE, INC.  
555 12th Street, Suite 1725  
Oakland, CA 94607  
www.lee-associates.com

HESPERIAN BUSINESS PARK  
TRIPALDI WAY  
HAYWARD, CA 94545



## Hesperian Business Park

2488 Tripaldi Way  
Hayward, CA 94545

