

Aiea Medical Building - Suite 405

99-128 Aiea Heights Dr.
Suite 405, Aiea, HI 96701
www.cbre.com/hawaii

Property Description

Discover this excellent medical office condo in the Aiea Medical Building. Featuring an in-unit restroom and multiple small office/treatment rooms, it's perfect for medical owner-users. The efficient layout ensures optimal patient flow, while the prime location provides easy access for both patients and staff. Situated near Aiea Shopping Center and Pearlridge Center, this space offers the convenience of nearby retail and dining options, along with quick freeway access. Ample parking adds to the ease of use for patients and staff alike. Don't miss this opportunity to secure a valuable asset in a thriving community.

Property Features

- + **Size:** 920 SF
- + **Base Rent:** \$2.75/SF/Mo.
- + **Leasehold term:** Until Jun 30, 2032
(Can be extended)
- + **Operating Expense:** \$2.75/SF/Mo.
Estimated for 2025
- + **Reserved Parking:** 1
- + **Furniture Available**



Contact Us

Andrew Reenders (S)

Vice President

+1 808 5415146

Andrew.Reenders@cbre.com

Lic. RB-21784

Huaiyu "Eric" Zheng (S)

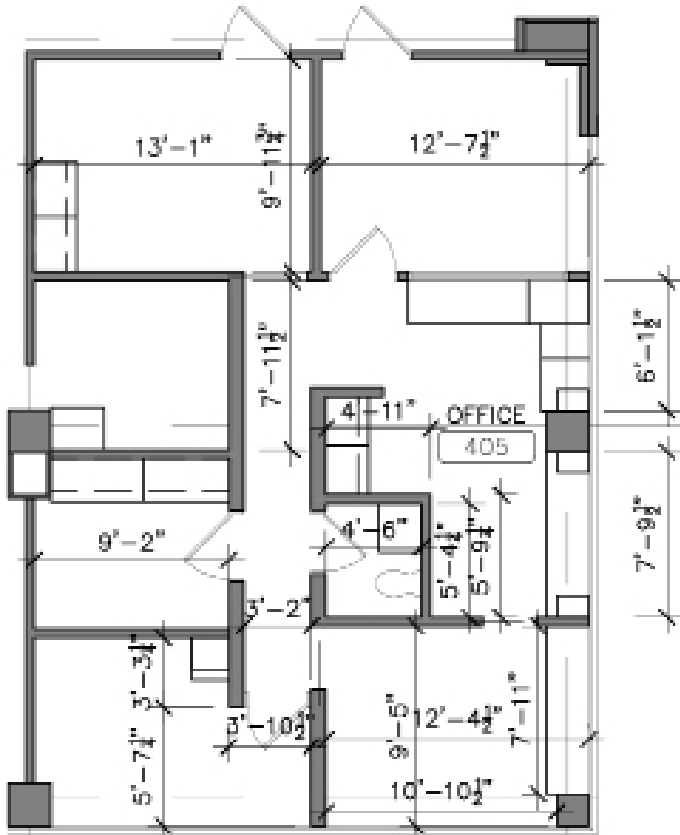
Associate

+1 808 541 5113

Eric.Zheng2@cbre.com

Lic. RS-85703

Floor Plan



© 2025 CBRE, Inc. All rights reserved. This information has been obtained from sources believed reliable, but has not been verified for accuracy or completeness. You should conduct a careful, independent investigation of the property and verify all information. Any reliance on this information is solely at your own risk. CBRE and the CBRE logo are service marks of CBRE, Inc. All other marks displayed on this document are the property of their respective owners, and the use of such logos does not imply any affiliation with or endorsement of CBRE. Photos herein are the property of their respective owners. Use of these images without the express written consent of the owner is prohibited.