

Market-Ready Land

Development Opportunity for Sale at
WP Malone Road, Arkadelphia, AR

CONTACT US

Greg Joslin, CCIM, SIOR
+1 501 978 6581
greg.joslin@ar.colliers.com

Colliers | Arkansas
1 Allied Drive | Suite 1500
Little Rock, AR 72202
P: +1 501 372 6161

Colliers

Accelerating success.

Property features

Land for Sale

- Total size: +/- 40 acres
- Proposed lot 1: \$1.50/SF (+/- 1.26 acres)
- Proposed lot 2: \$1.50/SF (+/- 2.06 acres)
- Additional lots: \$0.25/SF (+/- 36.38 acres)
- Easy access to Interstate 30
- Located near local retail corridor of Arkadelphia
- Traffic count: approximately 26,000 vehicles per day traveling Interstate 30

Area Demographics



Estimated Population (2025)

1 Mile	3 Mile	5 Mile
2,350	10,876	12,191



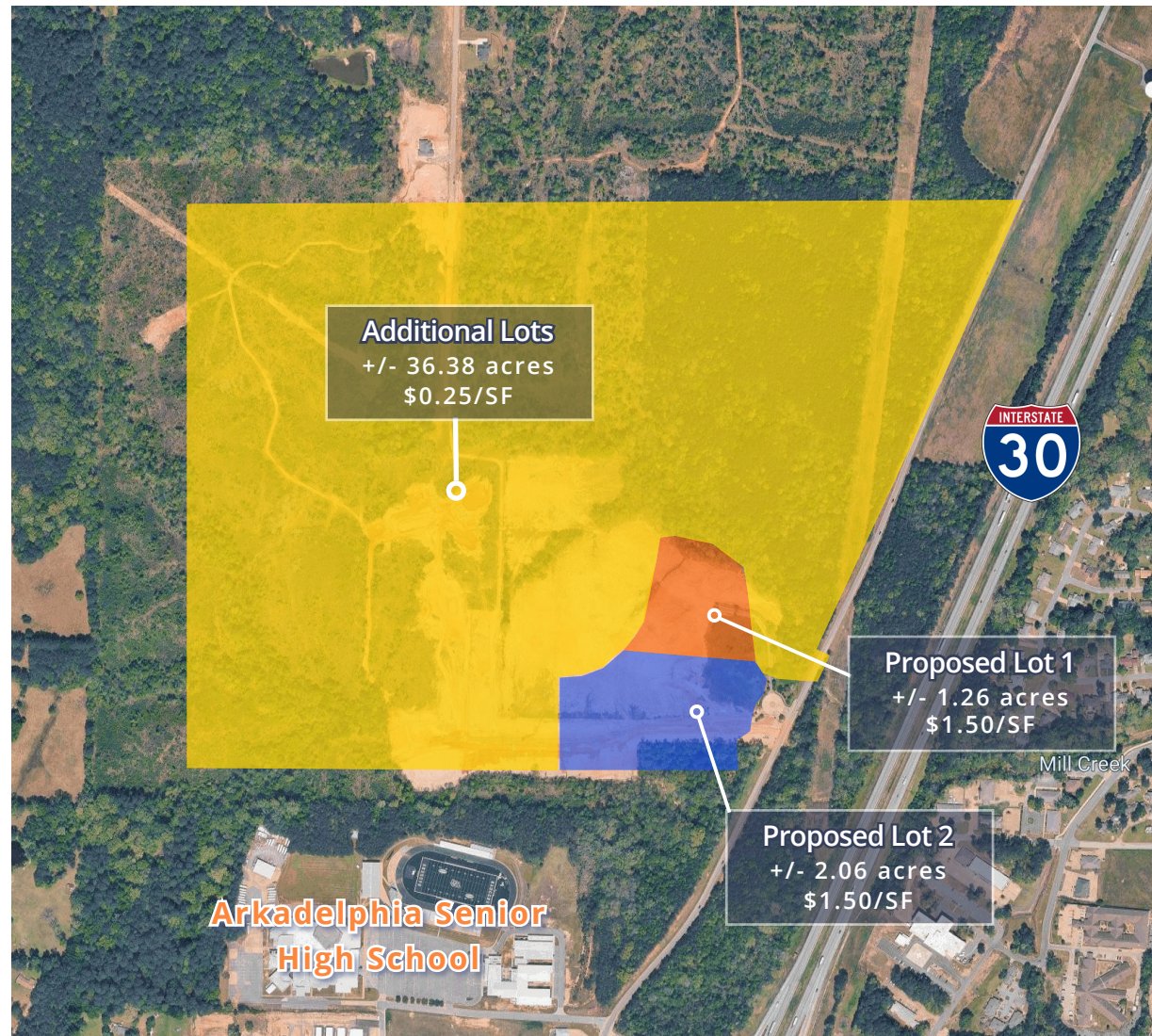
Estimated Households (2025)

1 Mile	3 Mile	5 Mile
995	3,823	4,364



Est. Avg Household Income (2025)

1 Mile	3 Mile	5 Mile
\$63,806	\$67,285	\$69,838

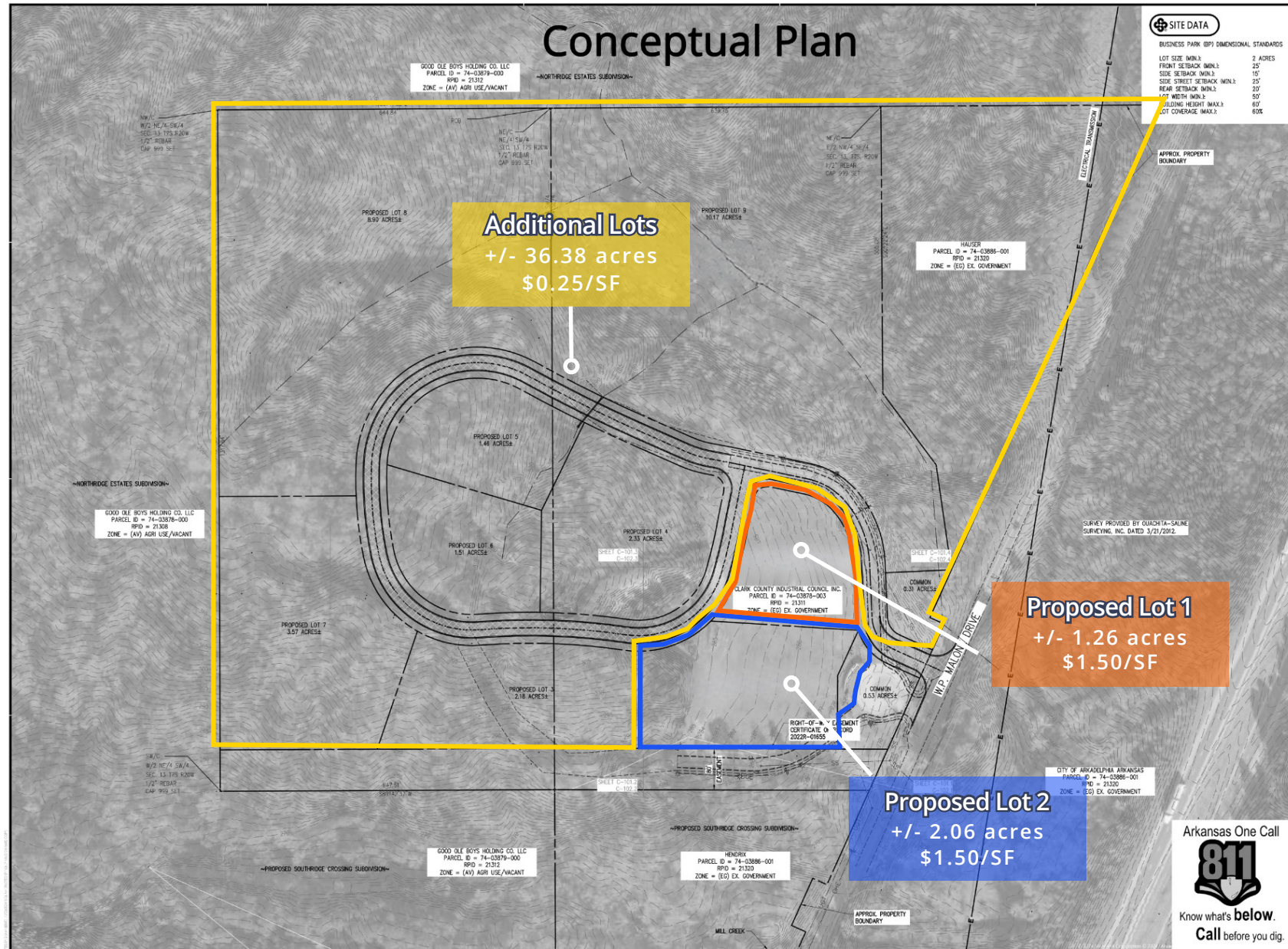


CONTACT US

Greg Joslin, CCIM, SIOR
 +1 501 978 6581
 greg.joslin@ar.colliers.com

Colliers | Arkansas
 1 Allied Drive, Suite 1500
 Little Rock, AR 72202
 P: +1 501 372 6161
 F: +1 501 372 0671

Property plan

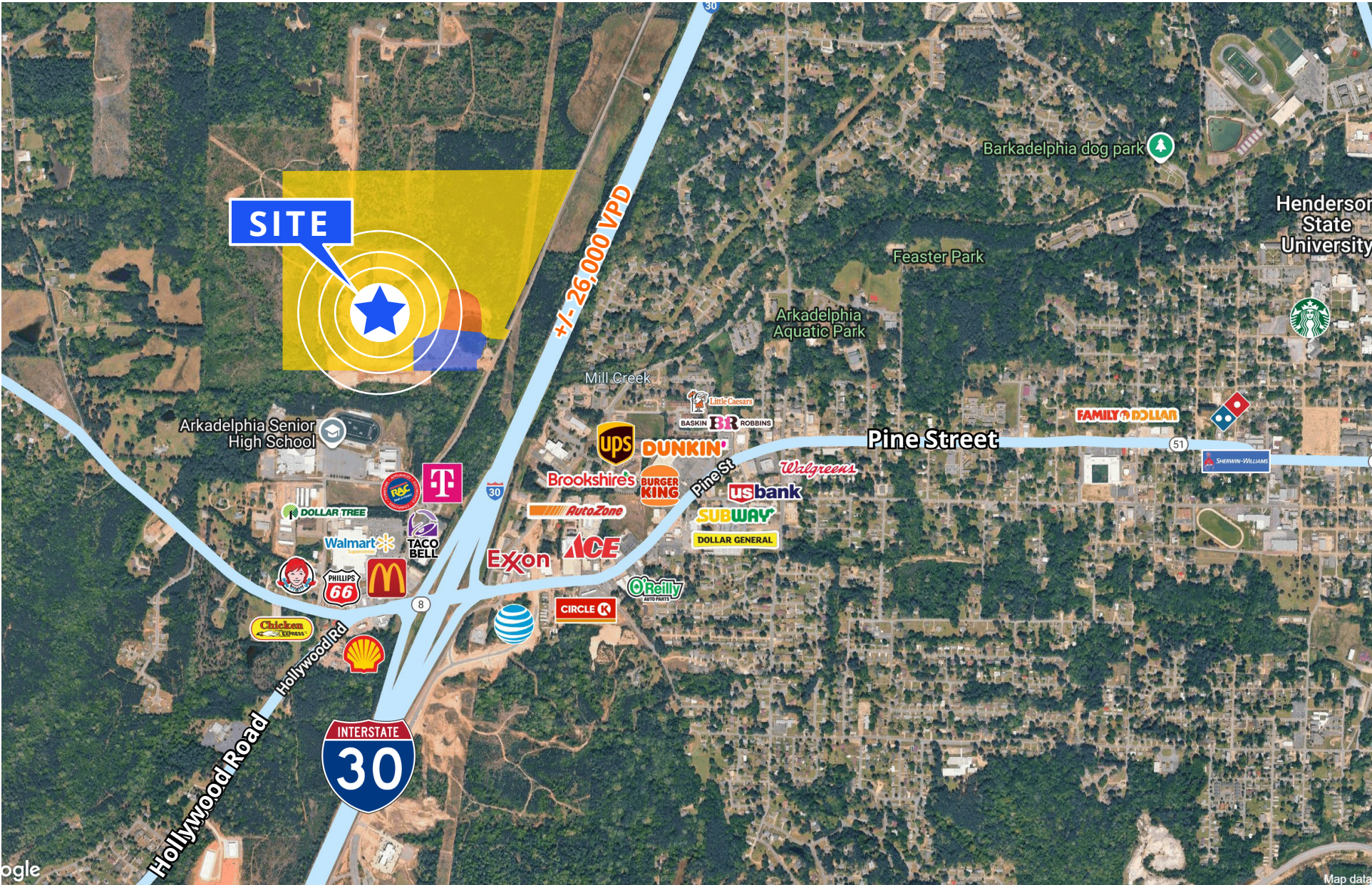


Arkansas One Call



Know what's below.
Call before you dig.

Property aerial



Market-Ready Land

WP MALONE ROAD, ARKADELPHIA, AR

Contact us:

Greg Joslin, CCIM, SIOR
+1 501 978 6581
greg.joslin@ar.colliers.com

This document has been prepared by Colliers International for advertising and general information only. Colliers International makes no guarantees, representations or warranties of any kind, expressed or implied, regarding the information including, but not limited to, warranties of content, accuracy and reliability. Any interested party should undertake their own inquiries as to the accuracy of the information. Colliers International excludes unequivocally all inferred or implied terms, conditions and warranties arising out of this document and excludes all liability for loss and damages arising there from. This publication is the copyrighted property of Colliers International and/or its licensor(s). ©2021. All rights reserved.

Colliers | Arkansas
1 Allied Drive | Suite 1500
Little Rock, AR 72202
P: +1 501 372 6161

