

OFFERING MEMORANDUM

9400

FOR LEASE
ROBERT IP
626-594-2527

AUTO SEAT COVER

PRIME COMMERCIAL SPACES ON VALLEY BLVD

9400 Valley Blvd
Rosemead CA 91770



COLDWELL BANKER
COMMERCIAL
REALTY

THE PROPERTY

Location	9400 Valley Blvd Rosemead, CA 91770
Building Size	9,127 SF
Zoning Type	C-3
Available Spaces	578 SF to 2,670 SF
Lease Rate	Rate: \$3.15/SF Month (Modified Gross)

PROPERTY DESCRIPTION

For Lease are retail spaces on a well located retail property on Valley Blvd. There is plentiful parking in the rear. With a C-3 zoning, there are many uses allowed including retail, restaurants, and office. There are great signage opportunities bringing great visibility to a business. With approximately 30,000 cars driving by on a daily basis, this is a great location for a variety of businesses.

POPULATION

1.00 MILE	3.00 MILE	5.00 MILE
25,777	247,895	555,779

AVERAGE HOUSEHOLD INCOME

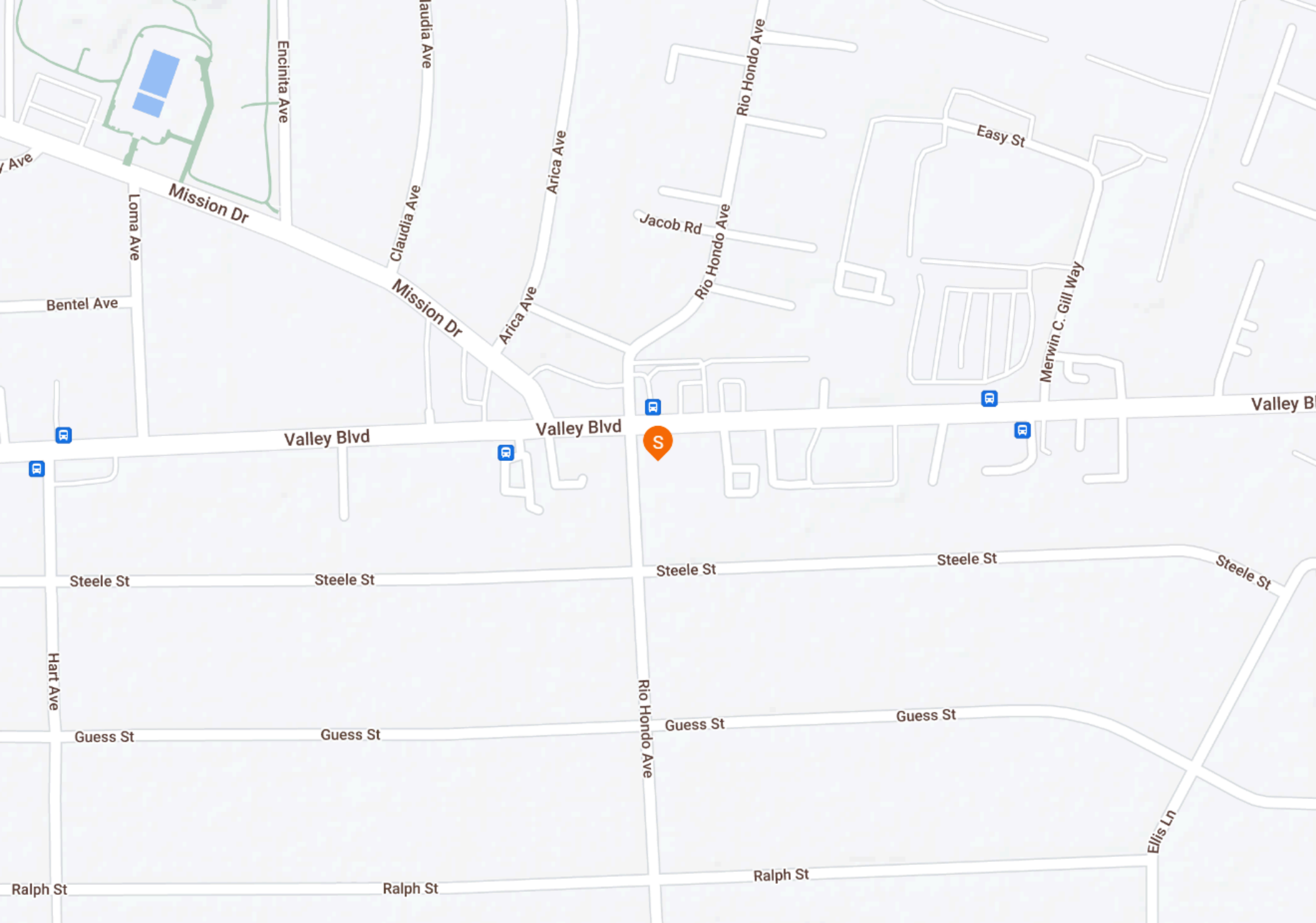
1.00 MILE	3.00 MILE	5.00 MILE
\$102,346	\$105,640	\$119,056

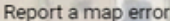
NUMBER OF HOUSEHOLDS

1.00 MILE	3.00 MILE	5.00 MILE
7,663	75,624	178,495

Available Suites:

SUITE 3	578 SF	\$3.15 PER SF
SUITE 4	578 SF	\$3.15 PER SF
SUITE 5	LEASED ALREADY	
SUITE 6	789 SF	\$3.15 PER SF
SUITE 7	725 SF	\$3.15 PER SF



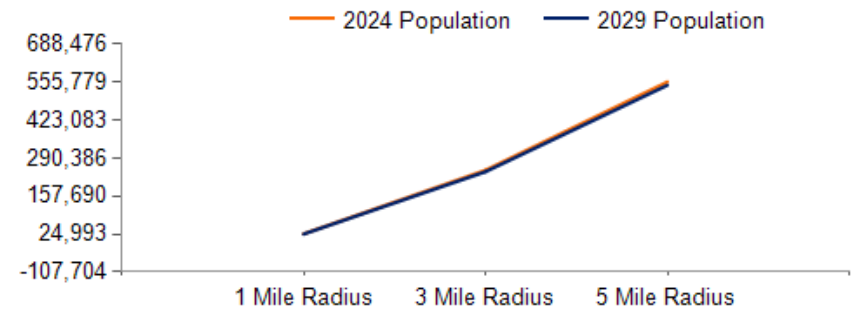




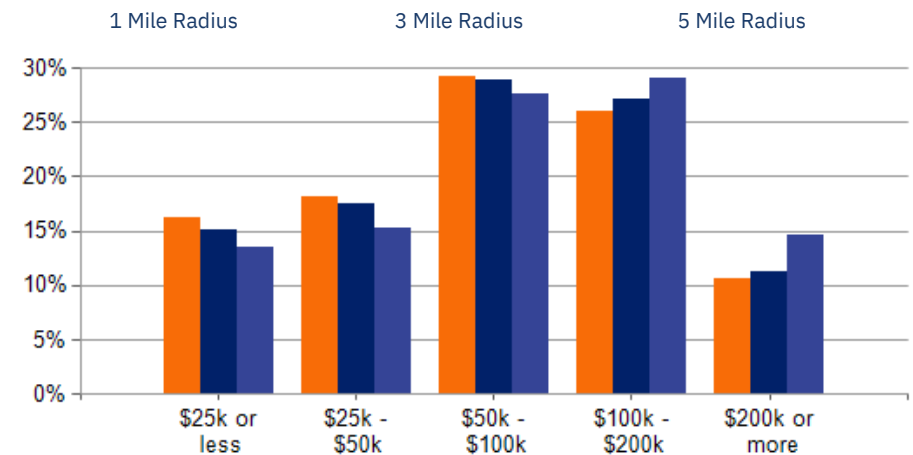
POPULATION	1 MILE	3 MILE	5 MILE
2000 Population	26,719	261,787	578,053
2010 Population	27,325	262,793	580,434
2024 Population	25,777	247,895	555,779
2029 Population	24,993	242,567	544,302
2024-2029: Population: Growth Rate	-3.10%	-2.15%	-2.10%

2024 HOUSEHOLD INCOME	1 MILE	3 MILE	5 MILE
less than \$15,000	571	6,099	13,299
\$15,000-\$24,999	668	5,361	10,862
\$25,000-\$34,999	554	5,508	10,911
\$35,000-\$49,999	838	7,726	16,184
\$50,000-\$74,999	1,191	11,737	26,532
\$75,000-\$99,999	1,047	10,118	22,814
\$100,000-\$149,999	1,215	12,878	32,560
\$150,000-\$199,999	775	7,654	19,316
\$200,000 or greater	806	8,542	26,016
Median HH Income	\$75,186	\$77,636	\$85,864
Average HH Income	\$102,346	\$105,640	\$119,056

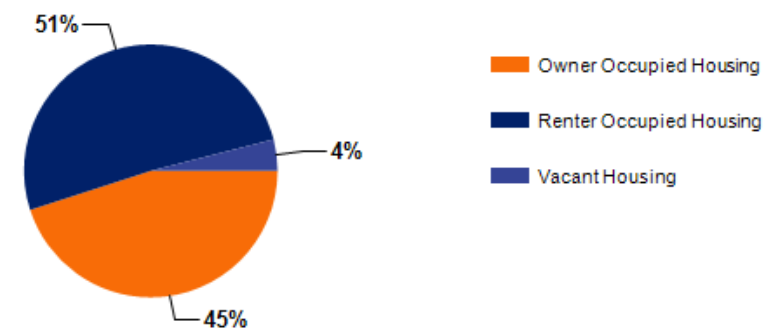
HOUSEHOLDS	1 MILE	3 MILE	5 MILE
2000 Total Housing	7,354	74,665	177,001
2010 Total Households	7,421	73,986	174,449
2024 Total Households	7,663	75,624	178,495
2029 Total Households	7,659	76,281	180,075
2024 Average Household Size	3.34	3.24	3.08
2024-2029: Households: Growth Rate	-0.05%	0.85%	0.90%



2024 Household Income



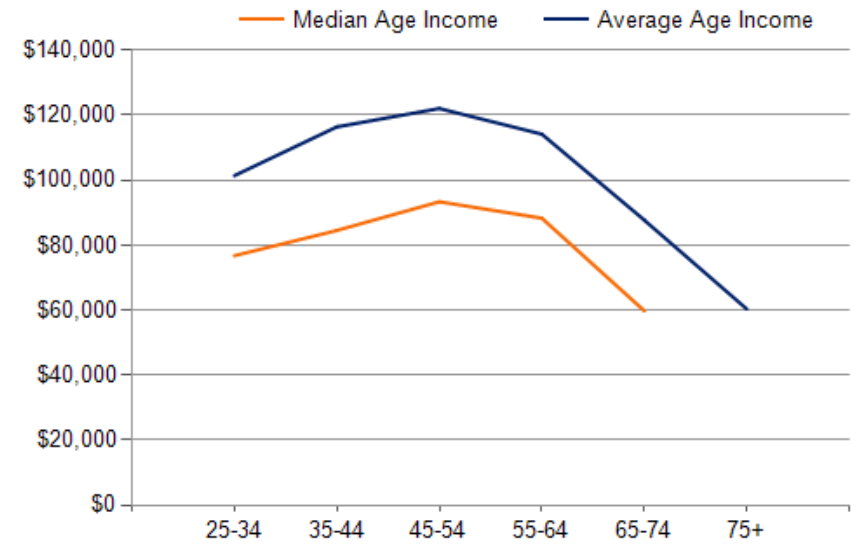
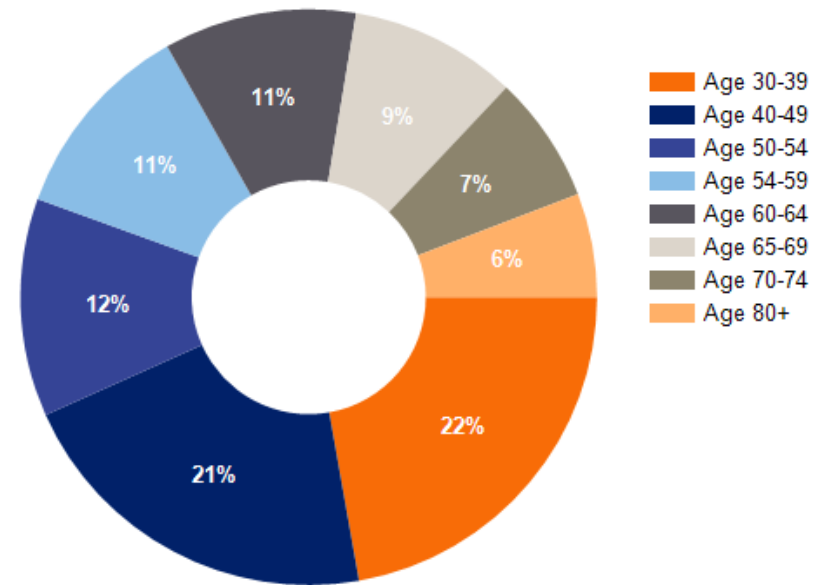
2024 Own vs. Rent - 1 Mile Radius



Source: esri

2024 POPULATION BY AGE				1 MILE	3 MILE	5 MILE
2024	Population	Age	30-34	1,772	17,725	40,390
2024	Population	Age	35-39	1,653	16,262	37,683
2024	Population	Age	40-44	1,598	16,006	37,052
2024	Population	Age	45-49	1,653	15,894	35,630
2024	Population	Age	50-54	1,887	17,997	39,770
2024	Population	Age	55-59	1,741	16,591	36,560
2024	Population	Age	60-64	1,665	16,204	36,185
2024	Population	Age	65-69	1,449	14,188	31,807
2024	Population	Age	70-74	1,103	11,470	25,905
2024	Population	Age	75-79	898	8,286	19,168
2024	Population	Age	80-84	547	5,240	12,471
2024	Population	Age	85+	727	6,425	15,313
2024	Population	Age	18+	21,060	202,290	454,846
2024	Median Age			41	41	42
2029	Median Age			42	42	43

2024 INCOME BY AGE				1 MILE	3 MILE	5 MILE
Median Household Income	25-34			\$76,767	\$78,219	\$84,474
Average Household Income	25-34			\$101,396	\$101,607	\$112,120
Median Household Income	35-44			\$84,537	\$91,266	\$102,700
Average Household Income	35-44			\$116,414	\$120,948	\$135,849
Median Household Income	45-54			\$93,367	\$96,041	\$107,861
Average Household Income	45-54			\$122,078	\$125,778	\$142,381
Median Household Income	55-64			\$88,301	\$86,832	\$97,997
Average Household Income	55-64			\$114,162	\$115,769	\$131,003
Median Household Income	65-74			\$59,755	\$63,362	\$72,723
Average Household Income	65-74			\$87,707	\$90,220	\$103,655
Average Household Income	75+			\$60,333	\$64,736	\$75,665



PRIME COMMERCIAL SPACES ON VALLEY BLVD

CONFIDENTIALITY and DISCLAIMER

The information contained in the following offering memorandum is proprietary and strictly confidential. It is intended to be reviewed only by the party receiving it from Coldwell Banker Commercial and it should not be made available to any other person or entity without the written consent of Coldwell Banker Commercial. By taking possession of and reviewing the information contained herein the recipient agrees to hold and treat all such information in the strictest confidence. The recipient further agrees that recipient will not photocopy or duplicate any part of the offering memorandum. If you have no interest in the subject property, please promptly return this offering memorandum to Coldwell Banker Commercial. This offering memorandum has been prepared to provide summary, unverified financial and physical information to prospective tenants, and to establish only a preliminary level of interest in the subject property. The information contained herein is not a substitute for a thorough due diligence investigation. Coldwell Banker Commercial has not made any investigation, and makes no warranty or representation with respect to the income or expenses for the subject property, the future projected financial performance of the property, the size and square footage of the property and improvements, the presence or absence of contaminating substances, PCBs or asbestos, the compliance with local, state and federal regulations, the physical condition of the improvements thereon, or financial condition or business prospects of any tenant, or any tenant's plans or intentions to continue its occupancy of the subject property. The information contained in this offering memorandum has been obtained from sources we believe reliable; however, Coldwell Banker Commercial has not verified, and will not verify, any of the information contained herein, nor has Coldwell Banker Commercial conducted any investigation regarding these matters and makes no warranty or representation whatsoever regarding the accuracy or completeness of the information provided. All potential buyers must take appropriate measures to verify all of the information set forth herein. Prospective buyers shall be responsible for their costs and expenses of investigating the subject property.

Exclusively Marketed by:

ROBERT IP

626.394.2527

Robert.Ip@cbcnrt.com

CalRE# 01876261



**COLDWELL BANKER
COMMERCIAL
REALTY**