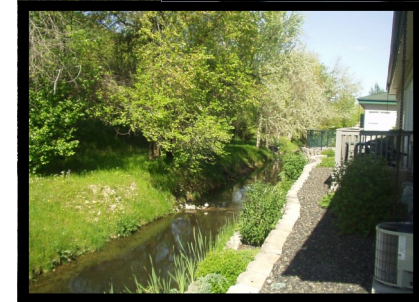
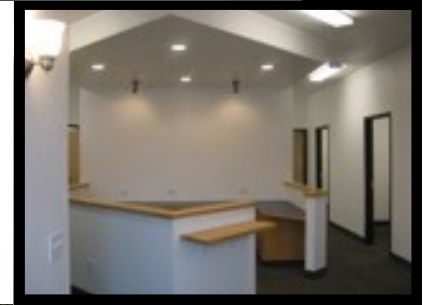
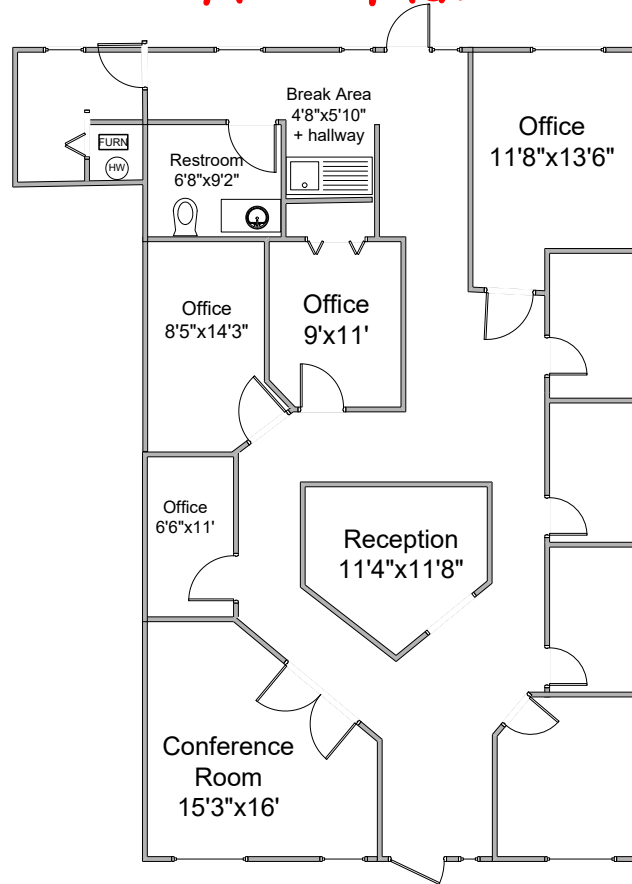


**1,806 SF Office**  
**4483 Dresden**  
**Place**  
**Suite 102**

**LEASE TERMS**  
**\$2,257.50/month (\$15 psf)**  
**+ NNN (\$3.00 psf)**  
**AVAILABLE 12/01/2022**  
**Tenant pays all utilities**

- **Excellent location for professional use, medical, insurance, law, real estate office.**
- **Lock Box**
- **Southeast corner of Glenwood and Chinden.**
- **Creek's Edge Office Park**

## Floor Plan



## Features

- **Good Parking**
- **Best Garden City Location**
- **Near Shopping & Dining**
- **Water features**
- **Private Offices**
- **Signage**
- **Zoned - C-2**

**Prime** Commercial Real Estate

Contact:

**Tim Graver, CCIM, CPM**

Cell: (208) 850-1440

Email: [tim@primeidaho.com](mailto:tim@primeidaho.com)

1406 N Main Street, Suite 215

Meridian, ID 83642

208-322-4900

[www.primeidaho.com](http://www.primeidaho.com)

Information is deemed reliable, but is not guaranteed and may be changed.

