

OFFICE SPACE IN SAN MATEO
AVAILABLE FOR LEASE



ASKING \$2.50 P/SF MODIFIED GROSS
500 Ben Franklin Ct, San Mateo, CA 94401

2,545 Sq. Ft. | Office Space

SC Properties is pleased to present prime office/flex space in the heart of Downtown San Mateo, just blocks from 3rd Avenue, Caltrain, and the area's top restaurants, retail, and daily amenities.

The space features air conditioning, a kitchenette, private restroom, abundant natural light, and an open layout complemented by two built-out conference rooms. With strong walkability, nearby public parking, and easy access to Highways 101 and 92, this flexible space is well-suited for a variety of professional, creative, or collaborative work environments.



CONTACT

Kevin Phillips
650 380 2868
Lic. #01470917
kphillips@scproppsm.com

Chris Giotinis
650 465 4028
Lic. #01962295
cg@scproppsm.com

Chase Gracia
650.296.8167
Lic. #02103619
cgracia@scproppsm.com

Rachid Atie
650.868.0202
Lic. #02095614
rratie@scproppsm.com



Investments. Brokerage. Leasing. Property Management.
311 S. Ellsworth Ave., San Mateo, CA 94401 | 650.342.3030 | info@scproppsm.com
www.scproppsm.com

OFFICE SPACE IN SAN MATEO
AVAILABLE FOR LEASE



CONTACT

Kevin Phillips
650 380 2868
Lic. #01470917
kphillips@scproppsm.com

Chris Giotinis
650 465 4028
Lic. #01962295
cg@scproppsm.com

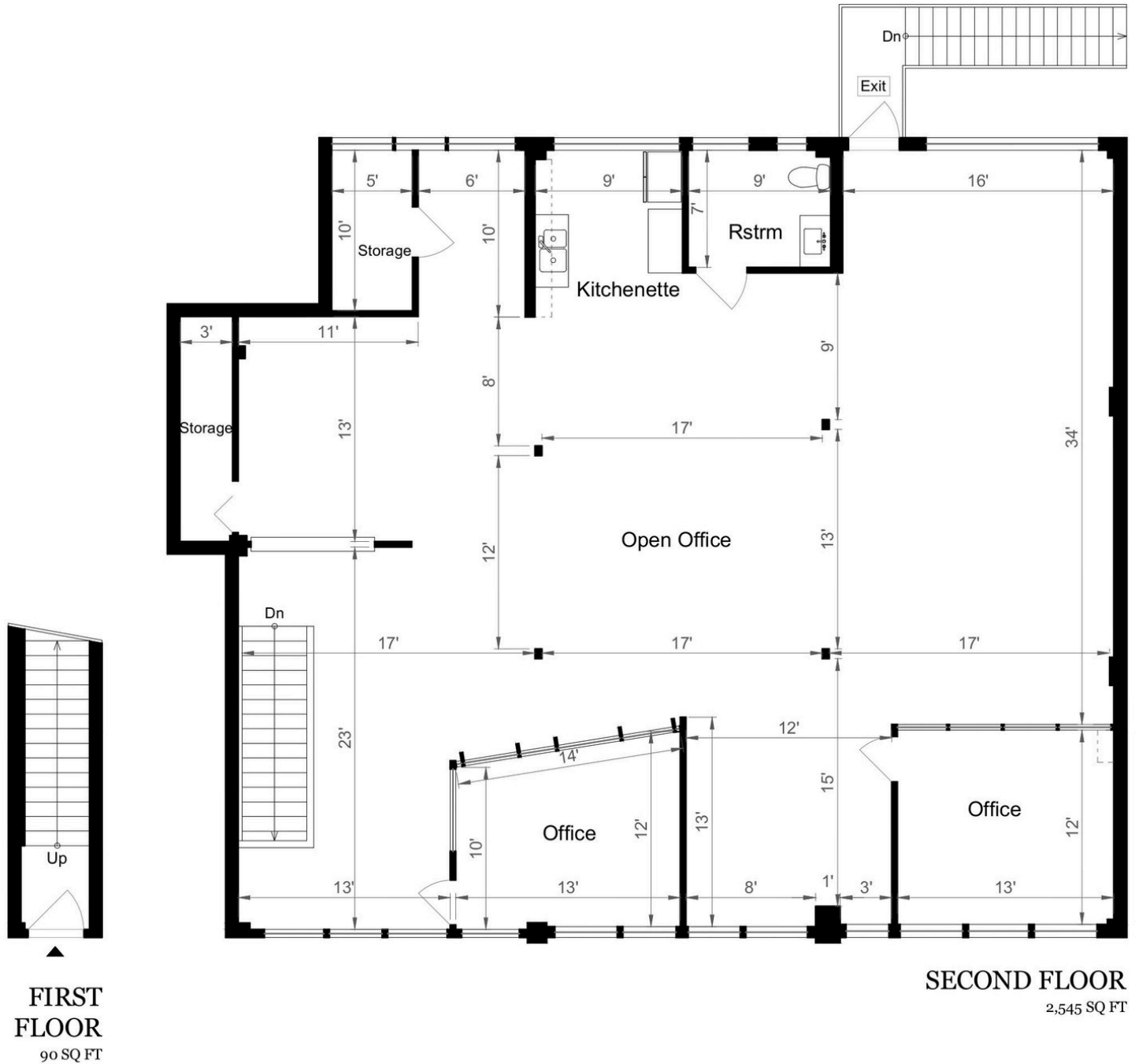
Chase Gracia
650.296.8167
Lic. #02103619
cgracia@scproppsm.com

Rachid Atie
650.868.0202
Lic. #02095614
rratie@scproppsm.com



Investments. Brokerage. Leasing. Property Management.
311 S. Ellsworth Ave., San Mateo, CA 94401 | 650.342.3030 | info@scproppsm.com
www.scproppsm.com

FLOOR PLAN



CONTACT

Kevin Phillips
650 380 2868
Lic. #01470917
kphillips@scpropsm.com

Chris Giotinis
650 465 4028
Lic. #01962295
cg@scpropsm.com

Chase Gracia
650.296.8167
Lic. #02103619
cgracia@scpropsm.com

Rachid Atie
650.868.0202
Lic. #02095614
rratie@scpropsm.com

Investments. Brokerage. Leasing. Property Management.
311 S. Ellsworth Ave., San Mateo, CA 94401 | 650.342.3030 | info@scpropsm.com
www.scpropsm.com

