



## Greenwich Centre

192 Ballard Court

Virginia Beach, Virginia 23462

### Property Highlights

- Class A Office Space
- Centrally located with convenient interstate access
- Potential for pylon and building signage
- Excellent Parking ratio
- Renovated Lobby and Restrooms
- Suites with flexible layouts and great window line

### Building Summary

<b>Lease Rate:</b>	\$21.50/ RSF, Full Service
<b>Building Size:</b>	57,643 RSF
<b>Available Suites:</b>	1,340 RSF - 5,320 RSF

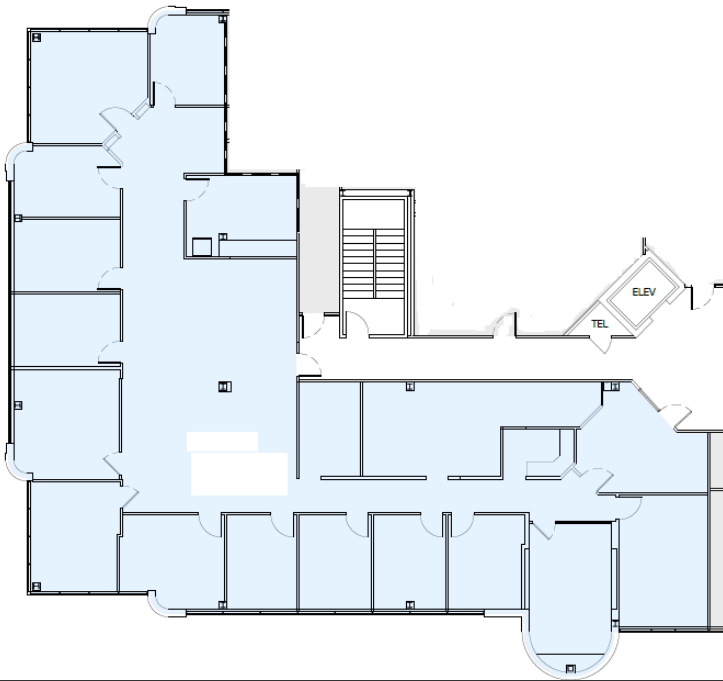
### For More Information

#### Matt Wilbricht

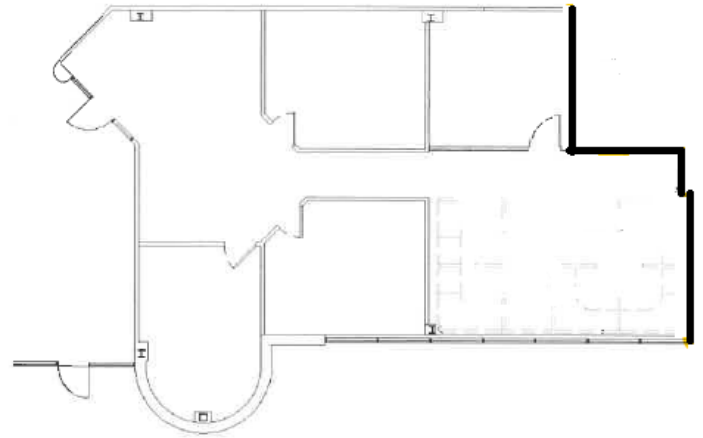
Executive Vice President, Principal

C: 757 270 6956

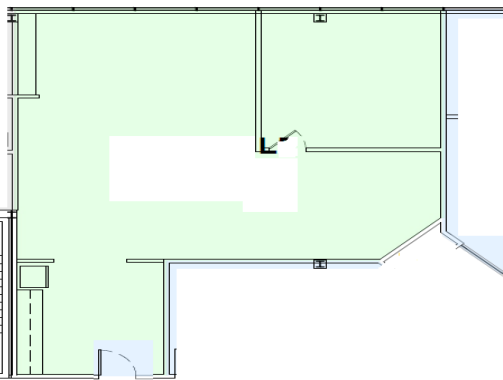
[mattwilbricht@naidominion.com](mailto:mattwilbricht@naidominion.com)



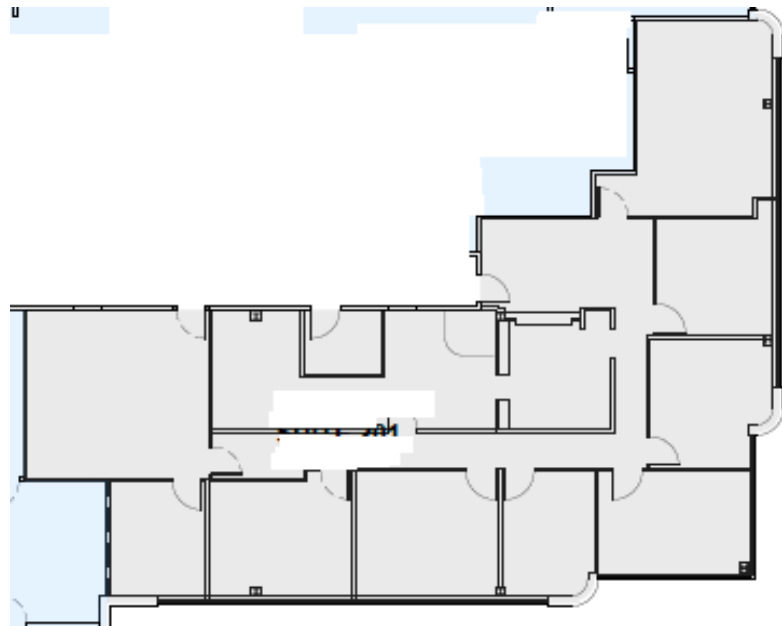
Suite 310- 5,320 RSF



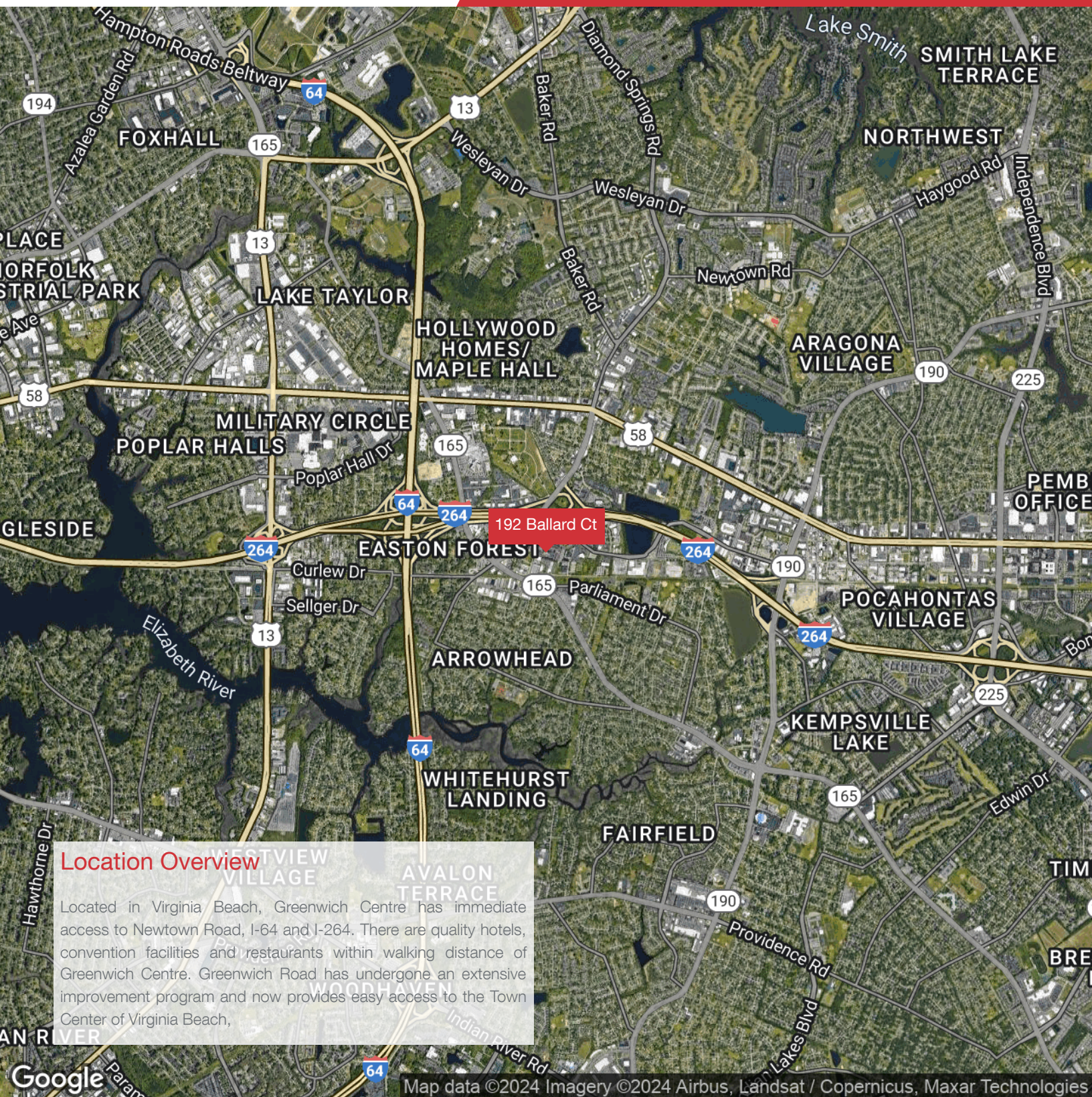
Suite 100- 1,850 RSF



Suite 210- 1,340 RSF



Suite 201- 3,180 RSF



### Location Overview

Located in Virginia Beach, Greenwich Centre has immediate access to Newtown Road, I-64 and I-264. There are quality hotels, convention facilities and restaurants within walking distance of Greenwich Centre. Greenwich Road has undergone an extensive improvement program and now provides easy access to the Town Center of Virginia Beach,